

Converting Colors

`RYB(204, 200, 134)`

Have a look what the booklet for
RYB(204, 200, 134) contains.

RYB(204, 200, 134)	3
<i>Conversions</i>	4
<i>Details</i>	6
<i>Harmonies</i>	11
<i>Previews</i>	23
<i>Color Blindness Simulation</i>	26
<i>CSS Examples</i>	29

Color

R_YB(204, 200, 134)

Conversions

Conversions Part 1

Format	Color
Hex	CCA886
RGB	204, 168, 134
RGB Percent	80%, 66%, 53%
CMY	0.2000, 0.3413, 0.4745
CMYK	0.00, 0.18, 0.34, 0.20
HSL	29°, 41%, 66%
HSV	29°, 34%, 80%
XYZ	43.2021, 42.5530, 28.4908
YIQ	174.8880, 32.3700, -2.9420

Conversions

Conversions Part 2

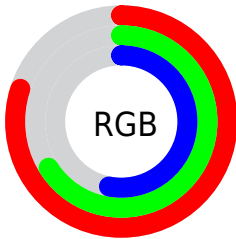
Format	Color
R _Y B	204, 200, 134
Decimal	13412486
CIE Lab	71.25, 8.36, 22.51
CIE LCh	71, 24.011, 69.631
Yxy	42.5530, 0.3782, 0.3725
Android (android.graphics.Color)	4291602566 (0xFFCCA886)
YUV	174.8880, -20.1578, 25.5312
Hunter-Lab	65.2327, 4.0594, 19.7676

Details

The RYB color **204, 200, 134** is a light color, and the websafe version is hex **CC9966**. A complement of this color would be **134, 158, 204**, and the grayscale version is **175, 175, 175**.

A 20% lighter version of the original color is **247, 255, 187**, and **149, 147, 84** is the 20% darker color. If you saturate the color by 10%, you get **204, 196, 114**, and if you desaturate by 10%, it is **204, 200, 154**.

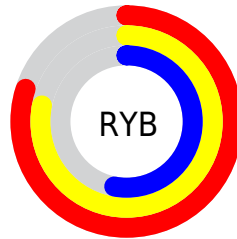
Distribution



Red (80%)

Green (66%)

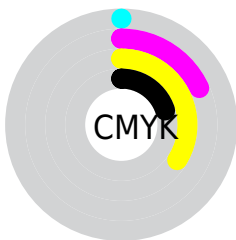
Blue (53%)



Red (80%)

Yellow (78%)

Blue (53%)

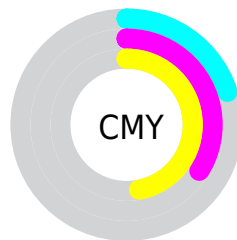


Cyan (0%)

Magenta (18%)

Yellow (34%)

Black (20%)



Cyan (20%)

Magenta (34%)

Yellow (47%)

Brightness & Saturation Gradients

These gradients show how the RYB color 204, 200, 134 changes by changing the brightness by 10 percent. The first figure shows a shift by +10% for each color and the second figure -10%.

Similar to the brightness gradients but the following saturation gradients show a change of the RYB color 204, 200, 134 by changing the saturation by 10% instead.

 204, 200, 134

 204, 200, 134


255, 255, 255

 176, 174, 109

 247, 255, 187

 149, 147, 84

 218, 255, 215

 122, 120, 61

 244, 255, 244

 92, 96, 38

 64, 71, 17


 44, 48, 0

 23, 0, 0


 0, 0, 0

 204, 200, 134


 204, 200, 134

 204, 196, 114


 204, 200, 154

 204, 198, 93


 204, 202, 175

 204, 194, 73

 204, 202, 195

 204, 196, 52

 204, 208, 216

 204, 192, 32

 204, 215, 236

 204, 192, 12

 204, 222, 255

 204, 192, 0

 204, 225, 255

 204, 229, 255

 204, 230, 255

Harmonies

Analogous

The Analogous color harmony consists of three colors that are next to each other on the color wheel.



217, 166, 148



204, 200, 134



142, 184, 131

Triad

The Triadic color harmony groups three colors that are evenly spaced from another and form a triangle on the color wheel.



204, 200, 134



116, 153, 187



187, 166, 208

Complementary

The Complementary color scheme is a pair of colors which are on the opposite of each other on the color wheel.



204, 200, 134



134, 158, 204

Split Complementary

Split-complementary colors differ from the complementary color scheme. The scheme consists of three colors, the original color and two neighbors of the complement color.



158, 171, 217



204, 200, 134



112, 152, 202

Square

The Square scheme is like the rectangle color scheme, but the four colors are evenly spaced on the color wheel.



204, 200, 134



135, 170, 186



129, 161, 215



209, 161, 190

Rectangle

The Rectangle color scheme consists of four colors that form a rectangle on the color wheel.



204, 200, 134



136, 180, 149



129, 161, 215



178, 169, 212

Sweetspot

The Sweet Spot groups the original color and five complimentary colors.



204, 200, 134



255, 253, 230



204, 134, 170



128, 128, 112



0, 0, 0



128, 128, 128

Same Dimension

The Same Dimension uses a secret algorithm to generate beautiful new colors.



204, 200, 134



255, 249, 150



135, 204, 134



102, 102, 92



166, 154, 0



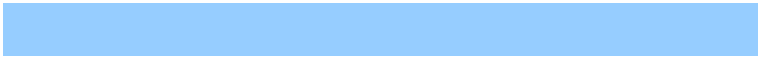
38, 38, 0

Inverse Universe

The Inverse Universe completely reimagines the original color for something new.



134, 158, 204



150, 186, 255



134, 135, 204



92, 95, 102



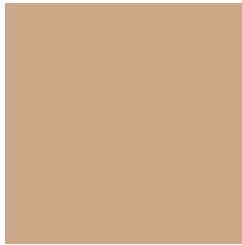
0, 56, 166



0, 13, 38

Previews

White Background



This preview shows how the RYB color 204, 200, 134 looks on a white background.

Color Contrast Check

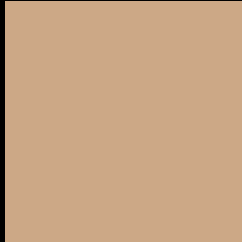
Large Text (above 18pt) WCAG AA × Fail

Any Text WCAG AA × Fail

Large Text (above 18pt) WCAG AAA × Fail

Any Text WCAG AAA × Fail

Black Background



This preview shows how the RYB color 204, 200, 134 looks on a black background.

Color Contrast Check

Large Text (above 18pt) WCAG AA ✓ Pass

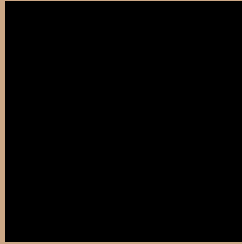
Any Text WCAG AA ✓ Pass

Large Text (above 18pt) WCAG AAA ✓ Pass

Any Text WCAG AAA ✓ Pass

If you want to check with other color combinations, try the [Color Contrast Checker](#).

RYB 204, 200, 134 Background



This preview shows how black text looks on a background with the RYB color 204, 200, 134.



This preview shows how white text looks on a background with the RYB color 204, 200, 134.

Color Blindness Simulation

Color vision deficiency is a very complex topic, and I could not describe the different causes any better than Wikipedia does, so if you want to learn more, you should check out their [article about color blindness](#).


Dichromacy



Original Color
204, 200, 134

Protanopia
153, 186, 137

Deuteranopia
205, 199, 134



Tritanopia
208, 162, 175

Trichromacy



Original Color

204, 200, 134

Protanomaly

169, 193, 136

Deuteranomaly

205, 199, 134

Tritanomaly

207, 164, 160

Monochromacy



Original Color

204, 200, 134

Achromatopsia

175, 175, 175

Achromatomaly

186, 182, 160

CSS Examples

Text

The CSS property to change the color of the text to RYB 204, 200, 134 is called "color". The color property can be set on classes, ids or directly on the HTML element.

This example shows how text in the color `rgb(204, 168, 134)` looks like.

```
.text, #text, p{  
    color:rgb(204, 168, 134)  
}
```

If you want to add a text shadow in that color use the text-shadow property, you can generate a text shadow directly with our [CSS Text Shadow Generator](#).

Here you see how black text with a 4 pixel rgb(204, 168, 134) colored shadow looks like.

```
.shadow{ text-shadow: 4px 4px 2px rgb(204, 168, 134) }
```

Border

The CSS property to change the border of an element to RYB 204, 200, 134 is called "border". The border property can be set on classes, ids or directly on the HTML element.

This example shows the color as border, it can be applied via the CSS property "border" or "border-color".

```
.border, #border, table{ border:4px solid rgb(204, 168, 134) }
```

If only the border color should be changed use the property `border-color`.

```
.border{ border-color:rgb(204, 168, 134) }
```

If you want to add a box shadow in that color use:

Here you see how a box with a 4 pixel `rgb(204, 168, 134)` colored shadow looks like.

```
.boxshadow{ -moz-box-shadow:4px 4px 4px  
4px rgb(204, 168, 134); -webkit-box-  
shadow:4px 4px 4px 4px rgb(204, 168, 134);  
box-shadow:4px 4px 4px 4px rgb(204, 168,  
134) }
```

Background

The CSS property to change the background color of an element to RGB 204, 168, 134 is called "background". The background property can be set on classes, ids or directly on the HTML element.

```
.background, #background, body{  
background: rgb(204, 168, 134) }
```

If only the background color should be changed can be used:

```
.background{ background-color: rgb(204,  
168, 134) }
```

This example shows the color as background, it is applied via the CSS property "background".

To optimize and compress your CSS code, you can use our [online CSS compressor and optimizer](#) based on csstidy. If you want to create a linear or radial gradient as background or border, check our [CSS Gradient Generator](#).

Hey! You found this booklet interesting? Support Converting Colors with the new Membership Option!

The pro membership hides all ads, plus gives you double the colors in the color bucket, and more awesome pro features!

[Learn more, Memberships starting at \\$2.50/m!](#)

**Follow me
on Twitter!**

@ConvertingColor