

# Converting Colors

`RYB(205, 172, 183)`

Have a look what the booklet for RYB(205, 172, 183) contains.

<b>RYB(205, 172, 183)</b> .....	3
<i><b>Conversions</b></i> .....	4
<i><b>Details</b></i> .....	6
<i><b>Harmonies</b></i> .....	11
<i><b>Previews</b></i> .....	23
<i><b>Color Blindness Simulation</b></i> .....	26
<i><b>CSS Examples</b></i> .....	29

# Color

**R<sub>Y</sub>B(205, 172, 183)**

# Conversions

## Conversions Part 1

Format	Color
Hex	CDACB7
RGB	205, 172, 183
RGB Percent	80%, 67%, 72%
CMY	0.1961, 0.3255, 0.2824
CMYK	0.00, 0.16, 0.11, 0.20
HSL	340°, 25%, 74%
HSV	340°, 16%, 80%
XYZ	48.4766, 45.9031, 51.1049
YIQ	183.1210, 16.1370, 10.4170

# Conversions

## Conversions Part 2

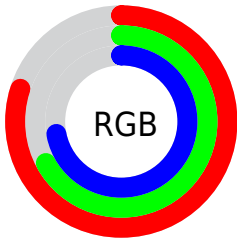
<b>Format</b>	<b>Color</b>
<b>R<sub>YB</sub></b>	205, 172, 183
Decimal	13479095
CIE <sub>Lab</sub>	73.48, 13.78, -1.15
CIE <sub>LCh</sub>	73, 13.833, 355.238
Yxy	45.9031, 0.3332, 0.3155
Android (android.graphics.Color)	4291669175 (0xFFCDACB7)
YUV	183.1210, -0.0597, 19.1879
Hunter-Lab	67.7518, 9.1516, 2.7040

# Details

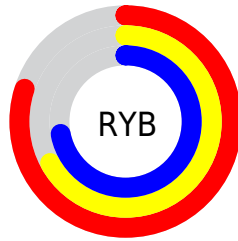
The RYB color **205, 172, 183** is a light color, and the websafe version is hex **CC9999**. A complement of this color would be **172, 192, 205**, and the grayscale version is **183, 183, 183**.

A 20% lighter version of the original color is **255, 227, 239**, and **150, 120, 130** is the 20% darker color. If you saturate the color by 10%, you get **205, 152, 169**, and if you desaturate by 10%, it is **205, 193, 197**.

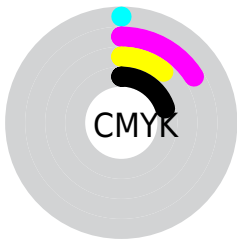
# Distribution



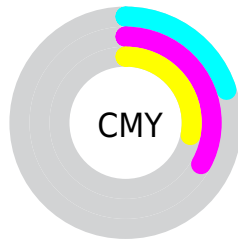
- Red (80%)
- Green (67%)
- Blue (72%)



- Red (80%)
- Yellow (67%)
- Blue (72%)



- Cyan (0%)
- Magenta (16%)
- Yellow (11%)
- Black (20%)



- Cyan (20%)
- Magenta (33%)
- Yellow (28%)

# Brightness & Saturation Gradients

These gradients show how the RYB color 205, 172, 183 changes by changing the brightness by 10 percent. The first figure shows a shift by +10% for each color and the second figure -10%.


Similar to the brightness gradients but the following saturation gradients show a change of the RYB color 205, 172, 183 by changing the saturation by 10% instead.



 205, 172, 183

 205, 172, 183

255, 255, 255

 177, 145, 156

 255, 227, 239

 150, 120, 130

 124, 95, 105

 99, 71, 81

 75, 48, 58

 52, 27, 36

 32, 2, 15

 0, 0, 0

 205, 172, 183

 205, 172, 183

 205, 152, 169

 205, 193, 197

 205, 131, 156


 205, 210, 213

 205, 111, 142

 205, 223, 234

 205, 90, 128

 205, 234, 254

 205, 70, 115

 205, 231, 255

 205, 49, 101

 205, 230, 255

 205, 29, 87

 205, 8, 74

 205, 0, 68

# Harmonies

## Analogous

The Analogous color harmony consists of three colors that are next to each other on the color wheel.



195, 174, 195



205, 172, 183



208, 172, 170

# Triad

The Triadic color harmony groups three colors that are evenly spaced from another and form a triangle on the color wheel.



205, 172, 183



157, 183, 161



152, 172, 201

# Complementary

The Complementary color scheme is a pair of colors which are on the opposite of each other on the color wheel.



205, 172, 183



172, 192, 205

# Split Complementary

Split-complementary colors differ from the complementary color scheme. The scheme consists of three colors, the original color and two neighbors of the complement color.



148, 169, 191



205, 172, 183



165, 185, 186

# Square

The Square scheme is like the rectangle color scheme, but the four colors are evenly spaced on the color wheel.



205, 172, 183



177, 193, 155



153, 173, 188



164, 177, 205

# Rectangle

The Rectangle color scheme consists of four colors that form a rectangle on the color wheel.



205, 172, 183



205, 178, 163



153, 173, 188



150, 171, 198



# Sweetspot

The Sweet Spot groups the original color and five complimentary colors.



205, 172, 183



255, 242, 247



194, 172, 205



128, 120, 122



0, 0, 0



128, 128, 128



# Same Dimension

The Same Dimension uses a secret algorithm to generate beautiful new colors.



205, 172, 183



255, 207, 223



205, 179, 172



102, 92, 95



166, 0, 55



38, 0, 13



# Inverse Universe

The Inverse Universe completely reimagines the original color for something new.



205, 172, 183



255, 207, 223



172, 187, 205



102, 92, 95



166, 0, 55

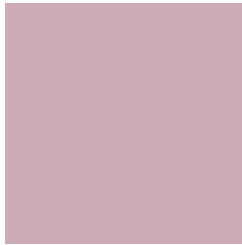


38, 0, 13



# Previews

## White Background



This preview shows how the RYB color 205, 172, 183 looks on a white background.

## Color Contrast Check

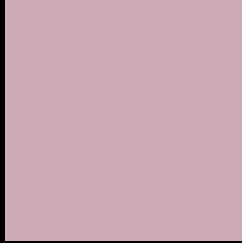
Large Text (above 18pt) WCAG AA × Fail

Any Text WCAG AA × Fail

Large Text (above 18pt) WCAG AAA × Fail

Any Text WCAG AAA × Fail

# Black Background



This preview shows how the RYB color 205, 172, 183 looks on a black background.

## Color Contrast Check

Large Text (above 18pt) WCAG AA ✓ Pass

Any Text WCAG AA ✓ Pass

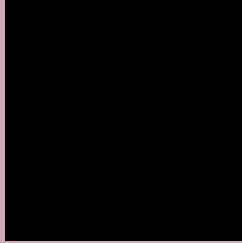
Large Text (above 18pt) WCAG AAA ✓ Pass

Any Text WCAG AAA ✓ Pass

If you want to check with other color combinations, try the [Color Contrast Checker](#).



## RYB 205, 172, 183 Background



This preview shows how black text looks on a background with the RYB color 205, 172, 183.



This preview shows how white text looks on a background with the RYB color 205, 172, 183.

# Color Blindness Simulation

Color vision deficiency is a very complex topic, and I could not describe the different causes any better than Wikipedia does, so if you want to learn more, you should check out their [article about color blindness](#).

## Dichromacy



**Original Color**  
205, 172, 183

**Protanopia**  
182, 180, 188

**Deuteranopia**  
197, 175, 182



**Tritanopia**  
205, 172, 185

# Trichromacy



**Original Color**

205, 172, 183

**Protanomaly**

190, 177, 186

**Deuteranomaly**

200, 174, 182

**Tritanomaly**

205, 172, 184

# Monochromacy



**Original Color**

205, 172, 183

**Achromatopsia**

183, 183, 183

**Achromatomaly**

191, 179, 183

# CSS Examples

## Text

The CSS property to change the color of the text to RYB 205, 172, 183 is called "color". The color property can be set on classes, ids or directly on the HTML element.

This example shows how text in the color rgb(205, 172, 183) looks like.

```
.text, #text, p{  
    color:rgb(205, 172, 183)  
}
```

If you want to add a text shadow in that color use the text-shadow property, you can generate a text shadow directly with our [CSS Text Shadow Generator](#).

Here you see how black text with a 4 pixel rgb(205, 172, 183) colored shadow looks like.

```
.shadow{ text-shadow: 4px 4px 2px rgb(205, 172, 183) }
```

## Border

The CSS property to change the border of an element to RYB 205, 172, 183 is called "border". The border property can be set on classes, ids or directly on the HTML element.

This example shows the color as border, it can be applied via the CSS property "border" or "border-color".

```
.border, #border, table{ border:4px solid rgb(205, 172, 183) }
```

If only the border color should be changed use the property `border-color`.

```
.border{ border-color:rgb(205, 172, 183) }
```

If you want to add a box shadow in that color use:

Here you see how a box with a 4 pixel `rgb(205, 172, 183)` colored shadow looks like.

```
.boxshadow{ -moz-box-shadow:4px 4px 4px  
4px rgb(205, 172, 183); -webkit-box-  
shadow:4px 4px 4px 4px rgb(205, 172, 183);  
box-shadow:4px 4px 4px 4px rgb(205, 172,  
183) }
```

# Background

The CSS property to change the background color of an element to RYB 205, 172, 183 is called "background". The background property can be set on classes, ids or directly on the HTML element.

```
.background, #background, body{  
background: rgb(205, 172, 183) }
```

If only the background color should be changed can be used:

```
.background{ background-color: rgb(205,  
172, 183) }
```

This example shows the color as background, it is applied via the CSS property "background".

To optimize and compress your CSS code, you can use our [online CSS compressor and optimizer](#) based on csstidy. If you want to create a linear or radial gradient as background or border, check our [CSS Gradient Generator](#).



Hey! You found this booklet interesting? Support Converting Colors with the new Membership Option!

The pro membership hides all ads, plus gives you double the colors in the color bucket, and more awesome pro features!

**[Learn more, Memberships starting at \\$2.50/m!](#)**

**Follow me  
on Twitter!**

@ConvertingColor