

Converting Colors

`RYB(205, 199, 110)`

Have a look what the booklet for
RYB(205, 199, 110) contains.

RYB(205, 199, 110)	3
<i>Conversions</i>	4
<i>Details</i>	6
<i>Harmonies</i>	11
<i>Previews</i>	23
<i>Color Blindness Simulation</i>	26
<i>CSS Examples</i>	29

Color

R_YB(205, 199, 110)

Conversions

Conversions Part 1

Format	Color
Hex	CD9C6E
RGB	205, 156, 110
RGB Percent	80%, 61%, 43%
CMY	0.1961, 0.3884, 0.5686
CMYK	0.00, 0.24, 0.46, 0.20
HSL	29°, 49%, 62%
HSV	29°, 46%, 80%
XYZ	39.8716, 37.8654, 19.9592
YIQ	165.4070, 43.9700, -3.9180

Conversions

Conversions Part 2

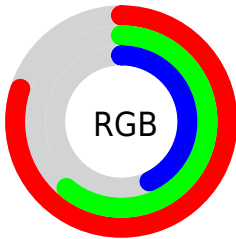
Format	Color
R_{YB}	205, 199, 110
Decimal	13474926
CIE _{Lab}	67.92, 12.56, 31.08
CIE _{LCh}	68, 33.523, 67.991
Yxy	37.8654, 0.4081, 0.3876
Android (android.graphics.Color)	4291665006 (0xFFCD9C6E)
YUV	165.4070, -27.3157, 34.7231
Hunter-Lab	61.5349, 7.9731, 23.8434

Details

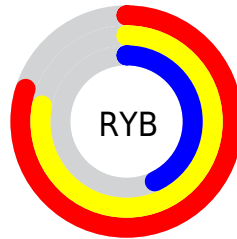
The RYB color **205, 199, 110** is a light color, and the websafe version is hex **CC9966**. A complement of this color would be **110, 142, 205**, and the grayscale version is **166, 166, 166**.

A 20% lighter version of the original color is **246, 255, 162**, and **146, 148, 61** is the 20% darker color. If you saturate the color by 10%, you get **205, 195, 90**, and if you desaturate by 10%, it is **205, 201, 131**.

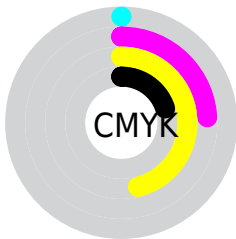
Distribution



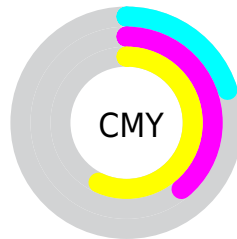
- Red (80%)
- Green (61%)
- Blue (43%)



- Red (80%)
- Yellow (78%)
- Blue (43%)



- Cyan (0%)
- Magenta (24%)
- Yellow (46%)
- Black (20%)



- Cyan (20%)
- Magenta (39%)
- Yellow (57%)

Brightness & Saturation Gradients

These gradients show how the RYB color 205, 199, 110 changes by changing the brightness by 10 percent. The first figure shows a shift by +10% for each color and the second figure -10%.

Similar to the brightness gradients but the following saturation gradients show a change of the RYB color 205, 199, 110 by changing the saturation by 10% instead.

 205, 199, 110

255, 255, 255

 249, 255, 162

 210, 255, 189

 217, 255, 217

 246, 255, 246

 205, 199, 110

 205, 199, 110

 176, 174, 85

 146, 148, 61

 117, 121, 39


 86, 95, 16


 63, 69, 0

 43, 25, 0


 9, 0, 0

 0, 0, 0


 205, 199, 110

 205, 195, 90


 205, 201, 131

 205, 197, 69

 205, 201, 151

 205, 193, 49

 205, 203, 172

 205, 195, 28

 205, 203, 192

 205, 191, 8

 205, 208, 213

 205, 191, 0

 205, 214, 233

 205, 222, 254

 205, 226, 255

 205, 229, 255

Harmonies

Analogous

The Analogous color harmony consists of three colors that are next to each other on the color wheel.



222, 151, 130



205, 199, 110



119, 178, 105

Triad

The Triadic color harmony groups three colors that are evenly spaced from another and form a triangle on the color wheel.



205, 199, 110



72, 129, 182



180, 155, 213

Complementary

The Complementary color scheme is a pair of colors which are on the opposite of each other on the color wheel.



205, 199, 110



110, 142, 205

Split Complementary

Split-complementary colors differ from the complementary color scheme. The scheme consists of three colors, the original color and two neighbors of the complement color.



136, 158, 225



205, 199, 110



57, 124, 202

Square

The Square scheme is like the rectangle color scheme, but the four colors are evenly spaced on the color wheel.



205, 199, 110



109, 157, 180



88, 141, 221



210, 146, 189

Rectangle

The Rectangle color scheme consists of four colors that form a rectangle on the color wheel.



205, 199, 110



111, 172, 126



88, 141, 221



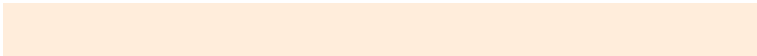
166, 158, 219

Sweetspot

The Sweet Spot groups the original color and five complimentary colors.



205, 199, 110



255, 255, 219



205, 110, 159



128, 124, 106



0, 0, 0



128, 128, 128

Same Dimension

The Same Dimension uses a secret algorithm to generate beautiful new colors.



205, 199, 110



255, 245, 112



112, 205, 110



102, 102, 92



166, 154, 0



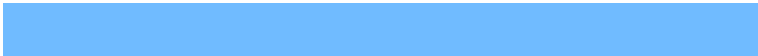
38, 38, 0

Inverse Universe

The Inverse Universe completely reimagines the original color for something new.



110, 142, 205



112, 161, 255



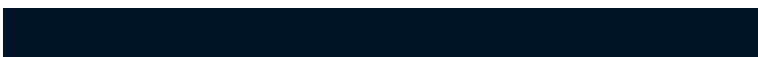
110, 112, 205



92, 95, 102



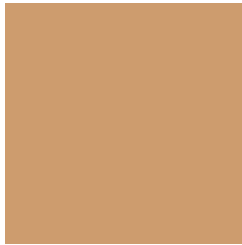
0, 57, 166



0, 13, 38

Previews

White Background



This preview shows how the RYB color 205, 199, 110 looks on a white background.

Color Contrast Check

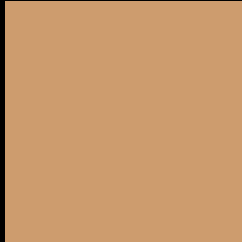
Large Text (above 18pt) WCAG AA × Fail

Any Text WCAG AA × Fail

Large Text (above 18pt) WCAG AAA × Fail

Any Text WCAG AAA × Fail

Black Background



This preview shows how the RYB color 205, 199, 110 looks on a black background.

Color Contrast Check

Large Text (above 18pt) WCAG AA ✓ Pass

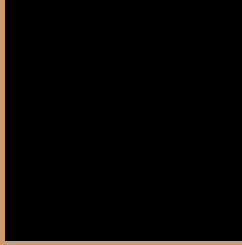
Any Text WCAG AA ✓ Pass

Large Text (above 18pt) WCAG AAA ✓ Pass

Any Text WCAG AAA ✓ Pass

If you want to check with other color combinations, try the [Color Contrast Checker](#).

RYB 205, 199, 110 Background



This preview shows how black text looks on a background with the RYB color 205, 199, 110.


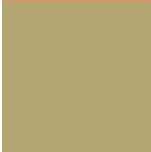


This preview shows how white text looks on a background with the RYB color 205, 199, 110.

Color Blindness Simulation

Color vision deficiency is a very complex topic, and I could not describe the different causes any better than Wikipedia does, so if you want to learn more, you should check out their [article about color blindness](#).

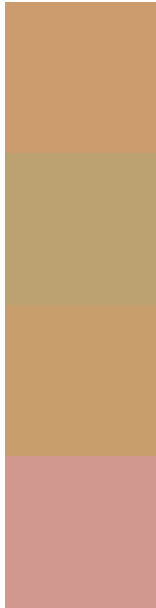
Dichromacy

	Original Color 205, 199, 110
	Protanopia 130, 179, 114
	Deuteranopia 181, 199, 109



Tritanopia
210, 149, 161

Trichromacy



Original Color
205, 199, 110

Protanomaly
153, 188, 113

Deuteranomaly
190, 201, 109

Tritanomaly
208, 154, 142

Monochromacy



Original Color
205, 199, 110

Achromatopsia
165, 165, 165

Achromatomaly
180, 178, 145

CSS Examples

Text

The CSS property to change the color of the text to RYB 205, 199, 110 is called "color". The color property can be set on classes, ids or directly on the HTML element.

This example shows how text in the color `rgb(205, 156, 110)` looks like.

```
.text, #text, p{  
    color:rgb(205, 156, 110)  
}
```

If you want to add a text shadow in that color use the text-shadow property, you can generate a text shadow directly with our [CSS Text Shadow Generator](#).

Here you see how black text with a 4 pixel rgb(205, 156, 110) colored shadow looks like.

```
.shadow{ text-shadow: 4px 4px 2px rgb(205, 156, 110) }
```

Border

The CSS property to change the border of an element to RYB 205, 199, 110 is called "border". The border property can be set on classes, ids or directly on the HTML element.

This example shows the color as border, it can be applied via the CSS property "border" or "border-color".

```
.border, #border, table{ border:4px solid rgb(205, 156, 110) }
```

If only the border color should be changed use the property `border-color`.

```
.border{ border-color:rgb(205, 156, 110) }
```

If you want to add a box shadow in that color use:

Here you see how a box with a 4 pixel `rgb(205, 156, 110)` colored shadow looks like.

```
.boxshadow{ -moz-box-shadow:4px 4px 4px  
4px rgb(205, 156, 110); -webkit-box-  
shadow:4px 4px 4px 4px rgb(205, 156, 110);  
box-shadow:4px 4px 4px 4px rgb(205, 156,  
110) }
```

Background

The CSS property to change the background color of an element to RGB 205, 156, 110 is called "background". The background property can be set on classes, ids or directly on the HTML element.

```
.background, #background, body{  
background: rgb(205, 156, 110) }
```

If only the background color should be changed can be used:

```
.background{ background-color: rgb(205,  
156, 110) }
```

This example shows the color as background, it is applied via the CSS property "background".

To optimize and compress your CSS code, you can use our [online CSS compressor and optimizer](#) based on csstidy. If you want to create a linear or radial gradient as background or border, check our [CSS Gradient Generator](#).

Hey! You found this booklet interesting? Support Converting Colors with the new Membership Option!

The pro membership hides all ads, plus gives you double the colors in the color bucket, and more awesome pro features!

[Learn more, Memberships starting at \\$2.50/m!](#)

**Follow me
on Twitter!**

@ConvertingColor