

Converting Colors

`RYB(206, 157, 157)`

Have a look what the booklet for
RYB(206, 157, 157) contains.

RYB(206, 157, 157)	3
<i>Conversions</i>	4
<i>Details</i>	6
<i>Harmonies</i>	11
<i>Previews</i>	23
<i>Color Blindness Simulation</i>	26
<i>CSS Examples</i>	29

Color

R_YB(206, 157, 157)

Conversions

Conversions Part 1

Format	Color
Hex	CE9D9D
RGB	206, 157, 157
RGB Percent	81%, 62%, 62%
CMY	0.1922, 0.3843, 0.3843
CMYK	0.00, 0.24, 0.24, 0.19
HSL	0°, 33%, 71%
HSV	0°, 24%, 81%
XYZ	43.5964, 39.6701, 37.2576
YIQ	171.6510, 29.2040, 10.3880

Conversions

Conversions Part 2

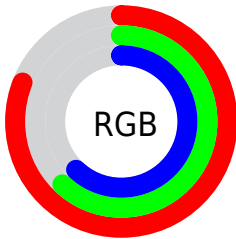
Format	Color
R _Y B	206, 157, 157
Decimal	13540765
CIE Lab	69.23, 18.22, 7.07
CIE LCh	69, 19.538, 21.203
Yxy	39.6701, 0.3617, 0.3291
Android (android.graphics.Color)	4291730845 (0xFFCE9D9D)
YUV	171.6510, -7.2229, 30.1241
Hunter-Lab	62.9842, 13.3318, 9.0166

Details

The RYB color **206, 157, 157** is a light color, and the websafe version is hex **CC9999**. A complement of this color would be **157, 182, 206**, and the grayscale version is **172, 172, 172**.

A 20% lighter version of the original color is **255, 212, 212**, and **151, 105, 106** is the 20% darker color. If you saturate the color by 10%, you get **206, 136, 136**, and if you desaturate by 10%, it is **206, 178, 178**.

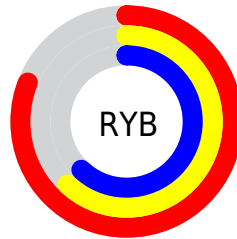
Distribution



Red (81%)

Green (62%)

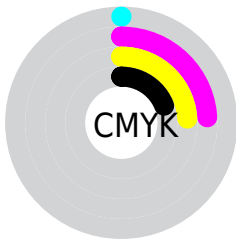
Blue (62%)



Red (81%)

Yellow (62%)

Blue (62%)

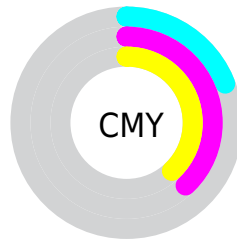


Cyan (0%)

Magenta (24%)

Yellow (24%)

Black (19%)



Cyan (19%)

Magenta (38%)

Yellow (38%)

Brightness & Saturation Gradients

These gradients show how the RYB color 206, 157, 157 changes by changing the brightness by 10 percent. The first figure shows a shift by +10% for each color and the second figure -10%.

Similar to the brightness gradients but the following saturation gradients show a change of the RYB color 206, 157, 157 by changing the saturation by 10% instead.

 206, 157, 157

 206, 157, 157

255, 255, 255


 178, 131, 131

 255, 212, 212


 151, 105, 106

 255, 240, 240

 124, 81, 82

 98, 58, 59

 74, 35, 37

 50, 14, 16

 28, 0, 1


 0, 0, 0

 206, 157, 157

 206, 157, 157

 206, 136, 136

 206, 178, 178

 206, 116, 116

 206, 198, 198

 206, 95, 95

 206, 213, 219

 206, 75, 75

 206, 223, 239

 206, 54, 54

 206, 231, 255

 206, 33, 33

 206, 13, 13

 206, 0, 0

Harmonies

Analogous

The Analogous color harmony consists of three colors that are next to each other on the color wheel.



201, 157, 175



206, 157, 157



201, 170, 142

Triad

The Triadic color harmony groups three colors that are evenly spaced from another and form a triangle on the color wheel.



206, 157, 157



146, 176, 173



142, 162, 204

Complementary

The Complementary color scheme is a pair of colors which are on the opposite of each other on the color wheel.



206, 157, 157



157, 182, 206

Split Complementary

Split-complementary colors differ from the complementary color scheme. The scheme consists of three colors, the original color and two neighbors of the complement color.



125, 155, 196



206, 157, 157



131, 160, 179

Square

The Square scheme is like the rectangle color scheme, but the four colors are evenly spaced on the color wheel.



206, 157, 157



136, 172, 139



121, 150, 181



165, 166, 202

Rectangle

The Rectangle color scheme consists of four colors that form a rectangle on the color wheel.



206, 157, 157



193, 191, 136



121, 150, 181



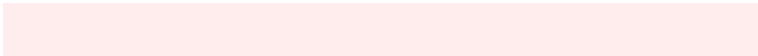
135, 160, 202

Sweetspot

The Sweet Spot groups the original color and five complimentary colors.



206, 157, 157



255, 237, 237



206, 157, 206



128, 117, 117



0, 0, 0



128, 128, 128

Same Dimension

The Same Dimension uses a secret algorithm to generate beautiful new colors.



206, 157, 157



255, 181, 181



206, 204, 157



102, 92, 92



166, 0, 0



38, 0, 0

Inverse Universe

The Inverse Universe completely reimagines the original color for something new.



157, 182, 206



181, 218, 255



157, 173, 206



92, 97, 102



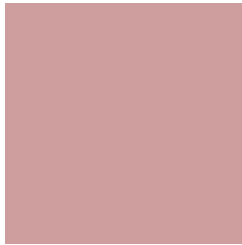
0, 83, 166



0, 19, 38

Previews

White Background



This preview shows how the RYB color 206, 157, 157 looks on a white background.

Color Contrast Check

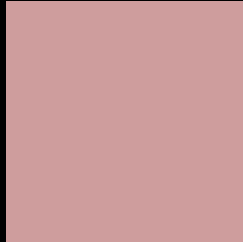
Large Text (above 18pt) WCAG AA × Fail

Any Text WCAG AA × Fail

Large Text (above 18pt) WCAG AAA × Fail

Any Text WCAG AAA × Fail

Black Background



This preview shows how the RYB color 206, 157, 157 looks on a black background.

Color Contrast Check

Large Text (above 18pt) WCAG AA ✓ Pass

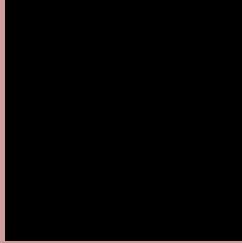
Any Text WCAG AA ✓ Pass

Large Text (above 18pt) WCAG AAA ✓ Pass

Any Text WCAG AAA ✓ Pass

If you want to check with other color combinations, try the [Color Contrast Checker](#).

RYB 206, 157, 157 Background



This preview shows how black text looks on a background with the RYB color 206, 157, 157.



This preview shows how white text looks on a background with the RYB color 206, 157, 157.

Color Blindness Simulation

Color vision deficiency is a very complex topic, and I could not describe the different causes any better than Wikipedia does, so if you want to learn more, you should check out their [article about color blindness](#).

Dichromacy



Original Color
206, 157, 157

Protanopia
172, 174, 163

Deuteranopia
191, 165, 156



Tritanopia
207, 155, 167

Trichromacy



Original Color
206, 157, 157

Protanomaly
186, 166, 161

Deuteranomaly
196, 162, 156

Tritanomaly
207, 156, 163

Monochromacy



Original Color
206, 157, 157

Achromatopsia
172, 172, 172

Achromatomaly
184, 167, 167

CSS Examples

Text

The CSS property to change the color of the text to RYB 206, 157, 157 is called "color". The color property can be set on classes, ids or directly on the HTML element.

This example shows how text in the color `rgb(206, 157, 157)` looks like.

```
.text, #text, p{  
    color:rgb(206, 157, 157)  
}
```

If you want to add a text shadow in that color use the text-shadow property, you can generate a text shadow directly with our [CSS Text Shadow Generator](#).

Here you see how black text with a 4 pixel rgb(206, 157, 157) colored shadow looks like.

```
.shadow{ text-shadow: 4px 4px 2px rgb(206, 157, 157) }
```

Border

The CSS property to change the border of an element to RYB 206, 157, 157 is called "border". The border property can be set on classes, ids or directly on the HTML element.

This example shows the color as border, it can be applied via the CSS property "border" or "border-color".

```
.border, #border, table{ border:4px solid rgb(206, 157, 157) }
```

If only the border color should be changed use the property `border-color`.

```
.border{ border-color:rgb(206, 157, 157) }
```

If you want to add a box shadow in that color use:

Here you see how a box with a 4 pixel `rgb(206, 157, 157)` colored shadow looks like.

```
.boxshadow{ -moz-box-shadow:4px 4px 4px  
4px rgb(206, 157, 157); -webkit-box-  
shadow:4px 4px 4px 4px rgb(206, 157, 157);  
box-shadow:4px 4px 4px 4px rgb(206, 157,  
157) }
```

Background

The CSS property to change the background color of an element to RGB 206, 157, 157 is called "background". The background property can be set on classes, ids or directly on the HTML element.

```
.background, #background, body{  
background: rgb(206, 157, 157) }
```

If only the background color should be changed can be used:

```
.background{ background-color: rgb(206,  
157, 157) }
```

This example shows the color as background, it is applied via the CSS property "background".

To optimize and compress your CSS code, you can use our [online CSS compressor and optimizer](#) based on csstidy. If you want to create a linear or radial gradient as background or border, check our [CSS Gradient Generator](#).

Hey! You found this booklet interesting? Support Converting Colors with the new Membership Option!

The pro membership hides all ads, plus gives you double the colors in the color bucket, and more awesome pro features!

[Learn more, Memberships starting at \\$2.50/m!](#)

**Follow me
on Twitter!**

@ConvertingColor