

Converting Colors

`RYB(206, 174, 166)`

Have a look what the booklet for RYB(206, 174, 166) contains.

RYB(206, 174, 166)	3
<i>Conversions</i>	4
<i>Details</i>	6
<i>Harmonies</i>	11
<i>Previews</i>	23
<i>Color Blindness Simulation</i>	26
<i>CSS Examples</i>	29

Color

R_YB(206, 174, 166)

Conversions

Conversions Part 1

Format	Color
Hex	CEADA6
RGB	206, 173, 166
RGB Percent	81%, 68%, 65%
CMY	0.1922, 0.3229, 0.3490
CMYK	0.00, 0.16, 0.19, 0.19
HSL	10°, 29%, 73%
HSV	10°, 19%, 81%
XYZ	47.2163, 45.6344, 42.3962
YIQ	182.0690, 21.9150, 4.8190

Conversions

Conversions Part 2

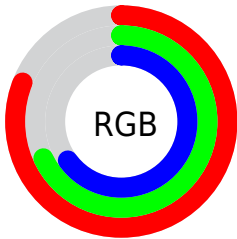
Format	Color
R _Y B	206, 174, 166
Decimal	13544870
CIE Lab	73.31, 11.05, 7.93
CIE LCh	73, 13.600, 35.689
Yxy	45.6344, 0.3491, 0.3374
Android (android.graphics.Color)	4291734950 (0xFFCEADA6)
YUV	182.0690, -7.9220, 20.9875
Hunter-Lab	67.5533, 6.5441, 10.0771

Details

The RYB color **206, 174, 166** is a light color, and the websafe version is hex **CC9999**. A complement of this color would be **166, 184, 206**, and the grayscale version is **182, 182, 182**.

A 20% lighter version of the original color is **255, 230, 221**, and **151, 123, 114** is the 20% darker color. If you saturate the color by 10%, you get **206, 157, 145**, and if you desaturate by 10%, it is **206, 191, 187**.

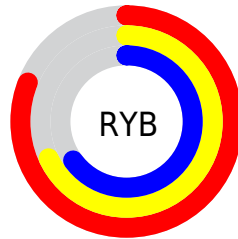
Distribution



Red (81%)

Green (68%)

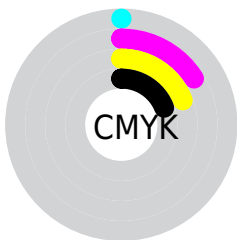
Blue (65%)



Red (81%)

Yellow (68%)

Blue (65%)

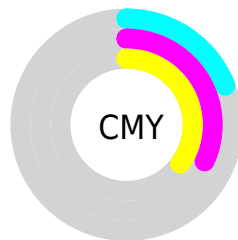


Cyan (0%)

Magenta (16%)

Yellow (19%)

Black (19%)



Cyan (19%)

Magenta (32%)

Yellow (35%)

Brightness & Saturation Gradients

These gradients show how the RYB color 206, 174, 166 changes by changing the brightness by 10 percent. The first figure shows a shift by +10% for each color and the second figure -10%.

Similar to the brightness gradients but the following saturation gradients show a change of the RYB color 206, 174, 166 by changing the saturation by 10% instead.


 206, 174, 166

 206, 174, 166

255, 255, 255

 178, 147, 140

 255, 230, 221

 151, 121, 114

 250, 255, 250

 125, 97, 90

 100, 73, 66


 75, 50, 44

 52, 29, 24

 32, 3, 0


 0, 0, 0

 206, 174, 166


 206, 174, 166

 206, 157, 145


 206, 191, 187

 206, 140, 125

 206, 207, 207

 206, 124, 104

 206, 216, 228

 206, 108, 84

 206, 225, 248

 206, 92, 63

 206, 231, 255

 206, 76, 42

 206, 58, 22

 206, 42, 1

 206, 41, 0

Harmonies

Analogous

The Analogous color harmony consists of three colors that are next to each other on the color wheel.



206, 172, 178



206, 174, 166



199, 190, 158

Triad

The Triadic color harmony groups three colors that are evenly spaced from another and form a triangle on the color wheel.



206, 174, 166



160, 179, 186



170, 178, 205

Complementary

The Complementary color scheme is a pair of colors which are on the opposite of each other on the color wheel.



206, 174, 166



166, 184, 206

Split Complementary

Split-complementary colors differ from the complementary color scheme. The scheme consists of three colors, the original color and two neighbors of the complement color.



156, 173, 202



206, 174, 166



150, 170, 187

Square

The Square scheme is like the rectangle color scheme, but the four colors are evenly spaced on the color wheel.



206, 174, 166



160, 184, 170



149, 170, 194



185, 176, 200

Rectangle

The Rectangle color scheme consists of four colors that form a rectangle on the color wheel.



206, 174, 166



175, 192, 155



149, 170, 194



165, 177, 205

Sweetspot

The Sweet Spot groups the original color and five complimentary colors.



206, 174, 166



255, 242, 240



206, 166, 200



128, 120, 119



0, 0, 0



128, 128, 128

Same Dimension

The Same Dimension uses a secret algorithm to generate beautiful new colors.



206, 174, 166



255, 208, 196



188, 206, 166



102, 95, 92



166, 34, 0



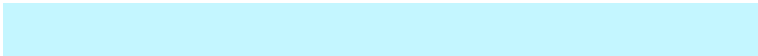
38, 7, 0

Inverse Universe

The Inverse Universe completely reimagines the original color for something new.



166, 184, 206



196, 223, 255



166, 176, 206



92, 96, 102



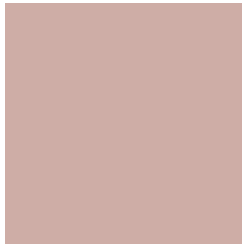
0, 75, 166



0, 17, 38

Previews

White Background



This preview shows how the RYB color 206, 174, 166 looks on a white background.

Color Contrast Check

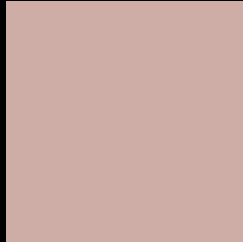
Large Text (above 18pt) WCAG AA × Fail

Any Text WCAG AA × Fail

Large Text (above 18pt) WCAG AAA × Fail

Any Text WCAG AAA × Fail

Black Background



This preview shows how the RYB color 206, 174, 166 looks on a black background.

Color Contrast Check

Large Text (above 18pt) WCAG AA ✓ Pass

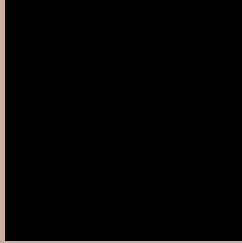
Any Text WCAG AA ✓ Pass

Large Text (above 18pt) WCAG AAA ✓ Pass

Any Text WCAG AAA ✓ Pass

If you want to check with other color combinations, try the [Color Contrast Checker](#).

RYB 206, 174, 166 Background



This preview shows how black text looks on a background with the RYB color 206, 174, 166.



This preview shows how white text looks on a background with the RYB color 206, 174, 166.

Color Blindness Simulation

Color vision deficiency is a very complex topic, and I could not describe the different causes any better than Wikipedia does, so if you want to learn more, you should check out their [article about color blindness](#).


Dichromacy



Original Color
206, 174, 166

Protanopia
182, 186, 170

Deuteranopia
203, 176, 166



Tritanopia
208, 170, 183

Trichromacy



Original Color

206, 174, 166

Protanomaly

193, 181, 169

Deuteranomaly

204, 176, 166

Tritanomaly

207, 171, 177

Monochromacy



Original Color

206, 174, 166

Achromatopsia

182, 182, 182

Achromatomaly

191, 180, 176

CSS Examples

Text

The CSS property to change the color of the text to RYB 206, 174, 166 is called "color". The color property can be set on classes, ids or directly on the HTML element.

This example shows how text in the color rgb(206, 173, 166) looks like.

```
.text, #text, p{  
    color:rgb(206, 173, 166)  
}
```

If you want to add a text shadow in that color use the text-shadow property, you can generate a text shadow directly with our [CSS Text Shadow Generator](#).

Here you see how black text with a 4 pixel rgb(206, 173, 166) colored shadow looks like.

```
.shadow{ text-shadow: 4px 4px 2px rgb(206, 173, 166) }
```

Border

The CSS property to change the border of an element to RYB 206, 174, 166 is called "border". The border property can be set on classes, ids or directly on the HTML element.

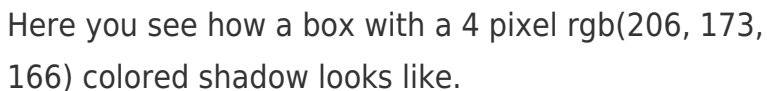
This example shows the color as border, it can be applied via the CSS property "border" or "border-color".

```
.border, #border, table{ border:4px solid rgb(206, 173, 166) }
```

If only the border color should be changed use the property `border-color`.

```
.border{ border-color:rgb(206, 173, 166) }
```

If you want to add a box shadow in that color use:



Here you see how a box with a 4 pixel `rgb(206, 173, 166)` colored shadow looks like.

```
.boxshadow{ -moz-box-shadow:4px 4px 4px  
4px rgb(206, 173, 166); -webkit-box-  
shadow:4px 4px 4px 4px rgb(206, 173, 166);  
box-shadow:4px 4px 4px 4px rgb(206, 173,  
166) }
```

Background

The CSS property to change the background color of an element to RYB 206, 174, 166 is called "background". The background property can be set on classes, ids or directly on the HTML element.

```
.background, #background, body{  
background: rgb(206, 173, 166) }
```

If only the background color should be changed can be used:

```
.background{ background-color: rgb(206,  
173, 166) }
```

This example shows the color as background, it is applied via the CSS property "background".

To optimize and compress your CSS code, you can use our [online CSS compressor and optimizer](#) based on csstidy. If you want to create a linear or radial gradient as background or border, check our [CSS Gradient Generator](#).

Hey! You found this booklet interesting? Support Converting Colors with the new Membership Option!

The pro membership hides all ads, plus gives you double the colors in the color bucket, and more awesome pro features!

[Learn more, Memberships starting at \\$2.50/m!](#)

**Follow me
on Twitter!**

@ConvertingColor