

Converting Colors

`RYB(207, 183, 184)`

Have a look what the booklet for RYB(207, 183, 184) contains.

RYB(207, 183, 184)	3
<i>Conversions</i>	4
<i>Details</i>	6
<i>Harmonies</i>	11
<i>Previews</i>	23
<i>Color Blindness Simulation</i>	26
<i>CSS Examples</i>	29

Color

R_YB(207, 183, 184)

Conversions

Conversions Part 1

Format	Color
Hex	CFB7B8
RGB	207, 183, 184
RGB Percent	81%, 72%, 72%
CMY	0.1882, 0.2824, 0.2784
CMYK	0.00, 0.12, 0.11, 0.19
HSL	358°, 20%, 76%
HSV	358°, 12%, 81%
XYZ	51.3173, 50.5931, 52.4081
YIQ	190.2900, 13.9830, 5.3990

Conversions

Conversions Part 2

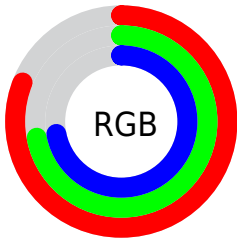
Format	Color
R_{YB}	207, 183, 184
Decimal	13612984
CIE Lab	76.43, 8.73, 2.63
CIE LCh	76, 9.115, 16.748
Yxy	50.5931, 0.3325, 0.3278
Android (android.graphics.Color)	4291803064 (0xFFCFB7B8)
YUV	190.2900, -3.1010, 14.6547
Hunter-Lab	71.1288, 4.3071, 6.1049

Details

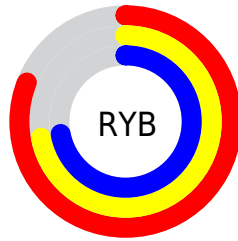
The RYB color **207, 183, 184** is a light color, and the websafe version is hex **CCCCCC**. A complement of this color would be **183, 195, 207**, and the grayscale version is **190, 190, 190**.

A 20% lighter version of the original color is **255, 239, 240**, and **153, 130, 131** is the 20% darker color. If you saturate the color by 10%, you get **207, 162, 164**, and if you desaturate by 10%, it is **207, 204, 204**.

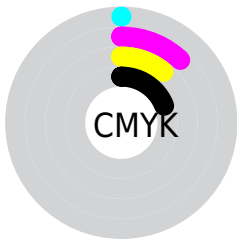
Distribution



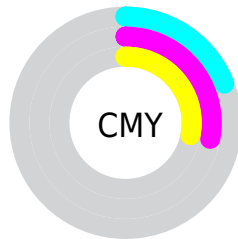
- Red (81%)
- Green (72%)
- Blue (72%)



- Red (81%)
- Yellow (72%)
- Blue (72%)



- Cyan (0%)
- Magenta (12%)
- Yellow (11%)
- Black (19%)



- Cyan (19%)
- Magenta (28%)
- Yellow (28%)

Brightness & Saturation Gradients

These gradients show how the RYB color 207, 183, 184 changes by changing the brightness by 10 percent. The first figure shows a shift by +10% for each color and the second figure -10%.

Similar to the brightness gradients but the following saturation gradients show a change of the RYB color 207, 183, 184 by changing the saturation by 10% instead.

 207, 183, 184

 207, 183, 184


255, 255, 255

 179, 156, 157

 255, 239, 240

 153, 130, 131

 126, 105, 106

 101, 81, 82

 77, 58, 59


 54, 36, 37

 33, 15, 16

 0, 0, 0

 207, 183, 184

 207, 183, 184

 207, 162, 164


 207, 204, 204

 207, 142, 144

 207, 216, 224

 207, 121, 124

 207, 226, 245

 207, 100, 105

 207, 231, 255

 207, 79, 85

 207, 59, 65

 207, 38, 45

 207, 17, 25

 207, 0, 9

Harmonies

Analogous

The Analogous color harmony consists of three colors that are next to each other on the color wheel.



204, 183, 193



207, 183, 184



205, 186, 177

Triad

The Triadic color harmony groups three colors that are evenly spaced from another and form a triangle on the color wheel.



207, 183, 184



177, 192, 188



176, 185, 205

Complementary

The Complementary color scheme is a pair of colors which are on the opposite of each other on the color wheel.



207, 183, 184



183, 195, 207

Split Complementary

Split-complementary colors differ from the complementary color scheme. The scheme consists of three colors, the original color and two neighbors of the complement color.



169, 183, 200



207, 183, 184



172, 185, 193

Square

The Square scheme is like the rectangle color scheme, but the four colors are evenly spaced on the color wheel.



207, 183, 184



174, 191, 172



168, 181, 194



186, 188, 205

Rectangle

The Rectangle color scheme consists of four colors that form a rectangle on the color wheel.



207, 183, 184



202, 197, 173



168, 181, 194



173, 184, 204

Sweetspot

The Sweet Spot groups the original color and five complimentary colors.



207, 183, 184



255, 247, 248



206, 183, 207



128, 122, 123



0, 0, 0



128, 128, 128

Same Dimension

The Same Dimension uses a secret algorithm to generate beautiful new colors.



207, 183, 184



255, 219, 221



207, 203, 183



105, 94, 95



168, 0, 7



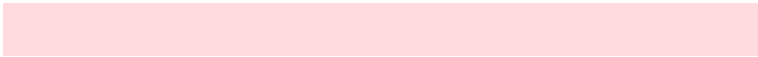
41, 0, 2

Inverse Universe

The Inverse Universe completely reimagines the original color for something new.



207, 183, 184



255, 219, 221



183, 191, 207



105, 94, 95



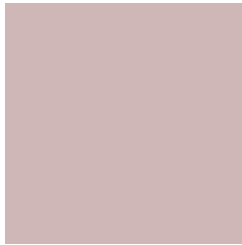
168, 0, 7



41, 0, 2

Previews

White Background



This preview shows how the RYB color 207, 183, 184 looks on a white background.

Color Contrast Check

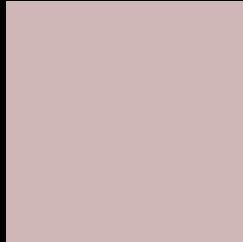
Large Text (above 18pt) WCAG AA × Fail

Any Text WCAG AA × Fail

Large Text (above 18pt) WCAG AAA × Fail

Any Text WCAG AAA × Fail

Black Background



This preview shows how the RYB color 207, 183, 184 looks on a black background.

Color Contrast Check

Large Text (above 18pt) WCAG AA ✓ Pass

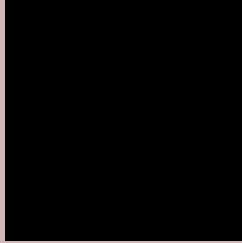
Any Text WCAG AA ✓ Pass

Large Text (above 18pt) WCAG AAA ✓ Pass

Any Text WCAG AAA ✓ Pass

If you want to check with other color combinations, try the [Color Contrast Checker](#).

RYB 207, 183, 184 Background



This preview shows how black text looks on a background with the RYB color 207, 183, 184.



This preview shows how white text looks on a background with the RYB color 207, 183, 184.

Color Blindness Simulation

Color vision deficiency is a very complex topic, and I could not describe the different causes any better than Wikipedia does, so if you want to learn more, you should check out their [article about color blindness](#).


Dichromacy



Original Color
207, 183, 184

Protanopia
192, 188, 187

Deuteranopia
208, 182, 184



Tritanopia
209, 181, 195

Trichromacy



Original Color

207, 183, 184

Protanomaly

197, 186, 186

Deuteranomaly

208, 182, 184

Tritanomaly

208, 182, 191

Monochromacy



Original Color

207, 183, 184

Achromatopsia

190, 190, 190

Achromatomaly

196, 187, 188

CSS Examples

Text

The CSS property to change the color of the text to RYB 207, 183, 184 is called "color". The color property can be set on classes, ids or directly on the HTML element.

This example shows how text in the color rgb(207, 183, 184) looks like.

```
.text, #text, p{  
    color:rgb(207, 183, 184)  
}
```

If you want to add a text shadow in that color use the text-shadow property, you can generate a text shadow directly with our [CSS Text Shadow Generator](#).

Here you see how black text with a 4 pixel rgb(207, 183, 184) colored shadow looks like.

```
.shadow{ text-shadow: 4px 4px 2px rgb(207, 183, 184) }
```

Border

The CSS property to change the border of an element to RYB 207, 183, 184 is called "border". The border property can be set on classes, ids or directly on the HTML element.

This example shows the color as border, it can be applied via the CSS property "border" or "border-color".

```
.border, #border, table{ border:4px solid rgb(207, 183, 184) }
```

If only the border color should be changed use the property `border-color`.

```
.border{ border-color:rgb(207, 183, 184) }
```

If you want to add a box shadow in that color use:

Here you see how a box with a 4 pixel `rgb(207, 183, 184)` colored shadow looks like.

```
.boxshadow{ -moz-box-shadow:4px 4px 4px  
4px rgb(207, 183, 184); -webkit-box-  
shadow:4px 4px 4px 4px rgb(207, 183, 184);  
box-shadow:4px 4px 4px 4px rgb(207, 183,  
184) }
```

Background

The CSS property to change the background color of an element to RYB 207, 183, 184 is called "background". The background property can be set on classes, ids or directly on the HTML element.

```
.background, #background, body{  
background: rgb(207, 183, 184) }
```

If only the background color should be changed can be used:

```
.background{ background-color: rgb(207,  
183, 184) }
```

This example shows the color as background, it is applied via the CSS property "background".

To optimize and compress your CSS code, you can use our [online CSS compressor and optimizer](#) based on csstidy. If you want to create a linear or radial gradient as background or border, check our [CSS Gradient Generator](#).

Hey! You found this booklet interesting? Support Converting Colors with the new Membership Option!

The pro membership hides all ads, plus gives you double the colors in the color bucket, and more awesome pro features!

[Learn more, Memberships starting at \\$2.50/m!](#)

**Follow me
on Twitter!**

@ConvertingColor