

# Converting Colors

`RYB(208, 156, 149)`

Have a look what the booklet for  
RYB(208, 156, 149) contains.

<b>RYB(208, 156, 149)</b> .....	3
<i><b>Conversions</b></i> .....	4
<i><b>Details</b></i> .....	6
<i><b>Harmonies</b></i> .....	11
<i><b>Previews</b></i> .....	23
<i><b>Color Blindness Simulation</b></i> .....	26
<i><b>CSS Examples</b></i> .....	29

# Color

**$\text{RYB}(208, 156, 149)$**

# Conversions

## Conversions Part 1

<b>Format</b>	<b>Color</b>
Hex	D09B95
RGB	208, 155, 149
RGB Percent	82%, 61%, 58%
CMY	0.1843, 0.3911, 0.4157
CMYK	0.00, 0.25, 0.28, 0.18
HSL	6°, 39%, 70%
HSV	6°, 28%, 82%
XYZ	43.2015, 39.1083, 33.7055
YIQ	170.1630, 33.5140, 9.3700

# Conversions

## Conversions Part 2

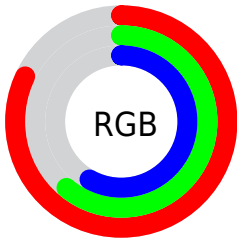
<b>Format</b>	<b>Color</b>
R <sub>Y</sub> B	208, 156, 149
Decimal	13671317
CIE Lab	68.83, 18.79, 10.96
CIE LCh	69, 21.755, 30.265
Yxy	39.1083, 0.3724, 0.3371
Android (android.graphics.Color)	4291861397 (0xFFD09B95)
YUV	170.1630, -10.4334, 33.1830
Hunter-Lab	62.5367, 13.8720, 11.8201

# Details

The RYB color **208, 156, 149** is a light color, and the websafe version is hex **CC9999**. A complement of this color would be **149, 177, 208**, and the grayscale version is **170, 170, 170**.

A 20% lighter version of the original color is **255, 211, 203**, and **152, 105, 98** is the 20% darker color. If you saturate the color by 10%, you get **208, 138, 128**, and if you desaturate by 10%, it is **208, 174, 170**.

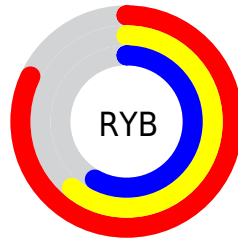
# Distribution



Red (82%)

Green (61%)

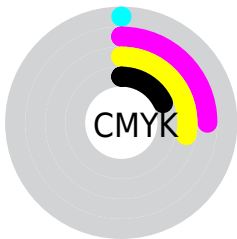
Blue (58%)



Red (82%)

Yellow (61%)

Blue (58%)

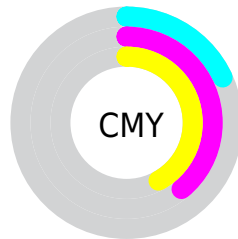


Cyan (0%)

Magenta (25%)

Yellow (28%)

Black (18%)



Cyan (18%)

Magenta (39%)

Yellow (42%)


# Brightness & Saturation Gradients

These gradients show how the RYB color 208, 156, 149 changes by changing the brightness by 10 percent. The first figure shows a shift by +10% for each color and the second figure -10%.


Similar to the brightness gradients but the following saturation gradients show a change of the RYB color 208, 156, 149 by changing the saturation by 10% instead.



 208, 156, 149

 208, 156, 149

255, 255, 255

 180, 130, 123

 255, 211, 203


 152, 105, 98

 255, 241, 231

 126, 79, 75

 100, 56, 52


 74, 34, 31

 51, 13, 7

 27, 0, 1

 0, 0, 0

 208, 156, 149


 208, 156, 149

 208, 138, 128

 208, 174, 170

 208, 119, 107

 208, 192, 191

 208, 100, 87

 208, 210, 211

 208, 83, 66

 208, 219, 232

 208, 64, 45

 208, 229, 253

 208, 46, 24

 208, 232, 255

 208, 28, 3

 208, 25, 0

# Harmonies

## Analogous

The Analogous color harmony consists of three colors that are next to each other on the color wheel.



206, 154, 168



208, 156, 149



199, 177, 134

# Triad

The Triadic color harmony groups three colors that are evenly spaced from another and form a triangle on the color wheel.



208, 156, 149



139, 170, 177



145, 163, 207

# Complementary

The Complementary color scheme is a pair of colors which are on the opposite of each other on the color wheel.



208, 156, 149



149, 177, 208

# Split Complementary

Split-complementary colors differ from the complementary color scheme. The scheme consists of three colors, the original color and two neighbors of the complement color.



122, 154, 201



208, 156, 149



120, 153, 179

# Square

The Square scheme is like the rectangle color scheme, but the four colors are evenly spaced on the color wheel.



208, 156, 149



134, 173, 146



112, 147, 187



172, 163, 202

# Rectangle

The Rectangle color scheme consists of four colors that form a rectangle on the color wheel.



208, 156, 149



172, 189, 129



112, 147, 187



136, 160, 206

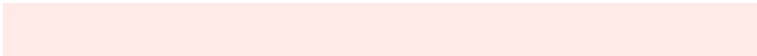


# Sweetspot

The Sweet Spot groups the original color and five complimentary colors.



208, 156, 149



255, 234, 232



208, 149, 202



128, 115, 113



0, 0, 0



128, 128, 128



# Same Dimension

The Same Dimension uses a secret algorithm to generate beautiful new colors.



208, 156, 149



255, 178, 168



189, 208, 149



105, 95, 94



168, 20, 0



41, 4, 0



# Inverse Universe

The Inverse Universe completely reimagines the original color for something new.



149, 177, 208



168, 209, 255



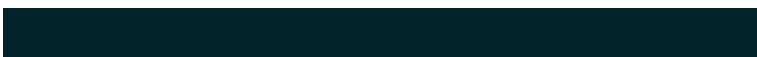
149, 166, 208



94, 99, 105



0, 79, 168

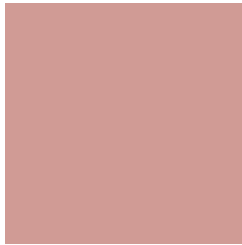


0, 19, 41



# Previews

## White Background



This preview shows how the RYB color 208, 156, 149 looks on a white background.

## Color Contrast Check

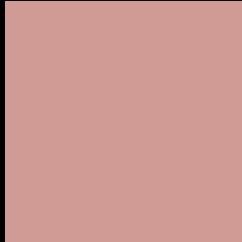
Large Text (above 18pt) WCAG AA × Fail

Any Text WCAG AA × Fail

Large Text (above 18pt) WCAG AAA × Fail

Any Text WCAG AAA × Fail

# Black Background



This preview shows how the RYB color 208, 156, 149 looks on a black background.

## Color Contrast Check

Large Text (above 18pt) WCAG AA ✓ Pass

Any Text WCAG AA ✓ Pass

Large Text (above 18pt) WCAG AAA ✓ Pass

Any Text WCAG AAA ✓ Pass

If you want to check with other color combinations, try the [Color Contrast Checker](#).



## **RYB 208, 156, 149 Background**



This preview shows how black text looks on a background with the RYB color 208, 156, 149.



This preview shows how white text looks on a background with the RYB color 208, 156, 149.

# Color Blindness Simulation

Color vision deficiency is a very complex topic, and I could not describe the different causes any better than Wikipedia does, so if you want to learn more, you should check out their [article about color blindness](#).

## Dichromacy



**Original Color**  
208, 156, 149

**Protanopia**  
164, 174, 155

**Deuteranopia**  
192, 169, 148



**Tritanopia**  
210, 153, 165

# Trichromacy



**Original Color**

208, 156, 149

**Protanomaly**

186, 167, 153

**Deuteranomaly**

198, 164, 148

**Tritanomaly**

209, 154, 159

# Monochromacy



**Original Color**

208, 156, 149

**Achromatopsia**

170, 170, 170

**Achromatomaly**

184, 165, 162

# CSS Examples

## Text

The CSS property to change the color of the text to RYB 208, 156, 149 is called "color". The color property can be set on classes, ids or directly on the HTML element.

This example shows how text in the color rgb(208, 155, 149) looks like.

```
.text, #text, p{  
    color:rgb(208, 155, 149)  
}
```

If you want to add a text shadow in that color use the text-shadow property, you can generate a text shadow directly with our [CSS Text Shadow Generator](#).

Here you see how black text with a 4 pixel rgb(208, 155, 149) colored shadow looks like.

```
.shadow{ text-shadow: 4px 4px 2px rgb(208, 155, 149) }
```

## Border

The CSS property to change the border of an element to RYB 208, 156, 149 is called "border". The border property can be set on classes, ids or directly on the HTML element.

This example shows the color as border, it can be applied via the CSS property "border" or "border-color".

```
.border, #border, table{ border:4px solid rgb(208, 155, 149) }
```

If only the border color should be changed use the property `border-color`.

```
.border{ border-color:rgb(208, 155, 149) }
```

If you want to add a box shadow in that color use:

Here you see how a box with a 4 pixel `rgb(208, 155, 149)` colored shadow looks like.

```
.boxshadow{ -moz-box-shadow:4px 4px 4px  
4px rgb(208, 155, 149); -webkit-box-  
shadow:4px 4px 4px 4px rgb(208, 155, 149);  
box-shadow:4px 4px 4px 4px rgb(208, 155,  
149) }
```

# Background

The CSS property to change the background color of an element to RGB 208, 156, 149 is called "background". The background property can be set on classes, ids or directly on the HTML element.

```
.background, #background, body{  
background: rgb(208, 155, 149) }
```

If only the background color should be changed can be used:

```
.background{ background-color: rgb(208,  
155, 149) }
```

This example shows the color as background, it is applied via the CSS property "background".

To optimize and compress your CSS code, you can use our [online CSS compressor and optimizer](#) based on csstidy. If you want to create a linear or radial gradient as background or border, check our [CSS Gradient Generator](#).



Hey! You found this booklet interesting? Support Converting Colors with the new Membership Option!

The pro membership hides all ads, plus gives you double the colors in the color bucket, and more awesome pro features!

**[Learn more, Memberships starting at \\$2.50/m!](#)**

**Follow me  
on Twitter!**

@ConvertingColor