

Converting Colors

`RYB(208, 167, 171)`

Have a look what the booklet for
RYB(208, 167, 171) contains.

RYB(208, 167, 171)	3
<i>Conversions</i>	4
<i>Details</i>	6
<i>Harmonies</i>	11
<i>Previews</i>	23
<i>Color Blindness Simulation</i>	26
<i>CSS Examples</i>	29

Color

R_YB(208, 167, 171)

Conversions

Conversions Part 1

Format	Color
Hex	D0A7AB
RGB	208, 167, 171
RGB Percent	82%, 65%, 67%
CMY	0.1843, 0.3451, 0.3294
CMYK	0.00, 0.20, 0.18, 0.18
HSL	354°, 30%, 74%
HSV	354°, 20%, 82%
XYZ	47.1818, 43.9876, 44.5318
YIQ	179.7150, 23.1520, 9.9360

Conversions

Conversions Part 2

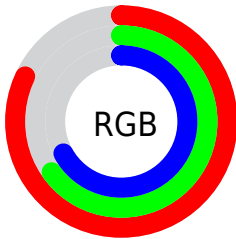
Format	Color
R_{YB}	208, 167, 171
Decimal	13674411
CIE _{Lab}	72.22, 15.64, 3.65
CIE _{LCh}	72, 16.057, 13.128
Yxy	43.9876, 0.3477, 0.3242
Android (android.graphics.Color)	4291864491 (0xFFD0A7AB)
YUV	179.7150, -4.2965, 24.8059
Hunter-Lab	66.3232, 10.9181, 6.6167

Details

The RYB color **208, 167, 171** is a light color, and the websafe version is hex **CC9999**. A complement of this color would be **167, 189, 208**, and the grayscale version is **180, 180, 180**.

A 20% lighter version of the original color is **255, 222, 226**, and **153, 115, 119** is the 20% darker color. If you saturate the color by 10%, you get **208, 146, 152**, and if you desaturate by 10%, it is **208, 188, 190**.

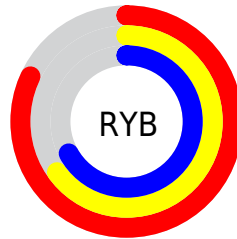
Distribution



Red (82%)

Green (65%)

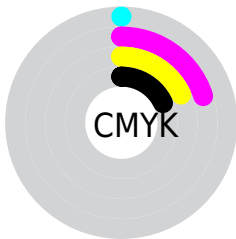
Blue (67%)



Red (82%)

Yellow (65%)

Blue (67%)

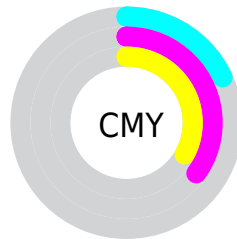


Cyan (0%)

Magenta (20%)

Yellow (18%)

Black (18%)



Cyan (18%)

Magenta (35%)

Yellow (33%)

Brightness & Saturation Gradients

These gradients show how the RYB color 208, 167, 171 changes by changing the brightness by 10 percent. The first figure shows a shift by +10% for each color and the second figure -10%.

Similar to the brightness gradients but the following saturation gradients show a change of the RYB color 208, 167, 171 by changing the saturation by 10% instead.

 208, 167, 171

255, 255, 255

 255, 222, 226


 255, 251, 255

 208, 167, 171

 180, 141, 145

 153, 115, 119

 127, 90, 94

 101, 67, 71

 77, 44, 48

 53, 23, 27

 34, 0, 0

 0, 0, 0

 208, 167, 171


 208, 167, 171

 208, 146, 152

 208, 188, 190

 208, 125, 133

 208, 209, 209

 208, 105, 115

 208, 219, 229

 208, 84, 96

 208, 230, 250

 208, 63, 77

 208, 232, 255

 208, 42, 58

 208, 21, 40

 208, 1, 21

 208, 0, 20

Harmonies

Analogous

The Analogous color harmony consists of three colors that are next to each other on the color wheel.



202, 168, 186



208, 167, 171



206, 172, 158

Triad

The Triadic color harmony groups three colors that are evenly spaced from another and form a triangle on the color wheel.



208, 167, 171



155, 182, 172



151, 170, 205

Complementary

The Complementary color scheme is a pair of colors which are on the opposite of each other on the color wheel.



208, 167, 171



167, 189, 208

Split Complementary

Split-complementary colors differ from the complementary color scheme. The scheme consists of three colors, the original color and two neighbors of the complement color.



140, 165, 197



208, 167, 171



150, 173, 185

Square

The Square scheme is like the rectangle color scheme, but the four colors are evenly spaced on the color wheel.



208, 167, 171



154, 182, 149



140, 164, 186



169, 175, 205

Rectangle

The Rectangle color scheme consists of four colors that form a rectangle on the color wheel.



208, 167, 171



200, 188, 151



140, 164, 186



147, 169, 203

Sweetspot

The Sweet Spot groups the original color and five complimentary colors.



208, 167, 171



255, 240, 241



204, 167, 208



128, 119, 119



0, 0, 0



128, 128, 128

Same Dimension

The Same Dimension uses a secret algorithm to generate beautiful new colors.



208, 167, 171



255, 194, 200



208, 193, 167



105, 94, 95



168, 0, 16



41, 0, 4

Inverse Universe

The Inverse Universe completely reimagines the original color for something new.



208, 167, 171



255, 194, 200



167, 183, 208



105, 94, 95



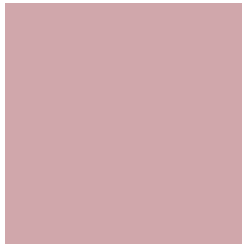
168, 0, 16



41, 0, 4

Previews

White Background



This preview shows how the RYB color 208, 167, 171 looks on a white background.

Color Contrast Check

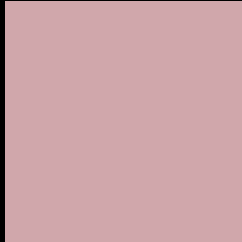
Large Text (above 18pt) WCAG AA × Fail

Any Text WCAG AA × Fail

Large Text (above 18pt) WCAG AAA × Fail

Any Text WCAG AAA × Fail

Black Background



This preview shows how the RYB color 208, 167, 171 looks on a black background.

Color Contrast Check

Large Text (above 18pt) WCAG AA ✓ Pass

Any Text WCAG AA ✓ Pass

Large Text (above 18pt) WCAG AAA ✓ Pass

Any Text WCAG AAA ✓ Pass

If you want to check with other color combinations, try the [Color Contrast Checker](#).

RYB 208, 167, 171 Background



This preview shows how black text looks on a background with the RYB color 208, 167, 171.



This preview shows how white text looks on a background with the RYB color 208, 167, 171.

Color Blindness Simulation

Color vision deficiency is a very complex topic, and I could not describe the different causes any better than Wikipedia does, so if you want to learn more, you should check out their [article about color blindness](#).

Dichromacy



Original Color
208, 167, 171

Protanopia
181, 176, 176

Deuteranopia
197, 171, 170



Tritanopia
209, 166, 179

Trichromacy



Original Color

208, 167, 171

Protanomaly

191, 173, 174

Deuteranomaly

201, 170, 170

Tritanomaly

209, 166, 176

Monochromacy



Original Color

208, 167, 171

Achromatopsia

180, 180, 180

Achromatomaly

190, 175, 177

CSS Examples

Text

The CSS property to change the color of the text to RYB 208, 167, 171 is called "color". The color property can be set on classes, ids or directly on the HTML element.

This example shows how text in the color rgb(208, 167, 171) looks like.

```
.text, #text, p{  
    color:rgb(208, 167, 171)  
}
```

If you want to add a text shadow in that color use the text-shadow property, you can generate a text shadow directly with our [CSS Text Shadow Generator](#).

Here you see how black text with a 4 pixel rgb(208, 167, 171) colored shadow looks like.

```
.shadow{ text-shadow: 4px 4px 2px rgb(208, 167, 171) }
```

Border

The CSS property to change the border of an element to RYB 208, 167, 171 is called "border". The border property can be set on classes, ids or directly on the HTML element.

This example shows the color as border, it can be applied via the CSS property "border" or "border-color".

```
.border, #border, table{ border:4px solid rgb(208, 167, 171) }
```

If only the border color should be changed use the property `border-color`.

```
.border{ border-color:rgb(208, 167, 171) }
```

If you want to add a box shadow in that color use:

Here you see how a box with a 4 pixel `rgb(208, 167, 171)` colored shadow looks like.

```
.boxshadow{ -moz-box-shadow:4px 4px 4px  
4px rgb(208, 167, 171); -webkit-box-  
shadow:4px 4px 4px 4px rgb(208, 167, 171);  
box-shadow:4px 4px 4px 4px rgb(208, 167,  
171) }
```

Background

The CSS property to change the background color of an element to RGB 208, 167, 171 is called "background". The background property can be set on classes, ids or directly on the HTML element.

```
.background, #background, body{  
background: rgb(208, 167, 171) }
```

If only the background color should be changed can be used:

```
.background{ background-color: rgb(208,  
167, 171) }
```

This example shows the color as background, it is applied via the CSS property "background".

To optimize and compress your CSS code, you can use our [online CSS compressor and optimizer](#) based on csstidy. If you want to create a linear or radial gradient as background or border, check our [CSS Gradient Generator](#).

Hey! You found this booklet interesting? Support Converting Colors with the new Membership Option!

The pro membership hides all ads, plus gives you double the colors in the color bucket, and more awesome pro features!

[Learn more, Memberships starting at \\$2.50/m!](#)

**Follow me
on Twitter!**

@ConvertingColor