

Converting Colors

`RYB(209, 143, 160)`

Have a look what the booklet for RYB(209, 143, 160) contains.

RYB(209, 143, 160)	3
<i>Conversions</i>	4
<i>Details</i>	6
<i>Harmonies</i>	11
<i>Previews</i>	23
<i>Color Blindness Simulation</i>	26
<i>CSS Examples</i>	29

Color

$\text{RYB}(209, 143, 160)$

Conversions

Conversions Part 1

Format	Color
Hex	D18FA0
RGB	209, 143, 160
RGB Percent	82%, 56%, 63%
CMY	0.1804, 0.4392, 0.3725
CMYK	0.00, 0.32, 0.23, 0.18
HSL	345°, 42%, 69%
HSV	345°, 32%, 82%
XYZ	42.4621, 35.7383, 37.9179
YIQ	164.6720, 33.8790, 19.2790

Conversions

Conversions Part 2

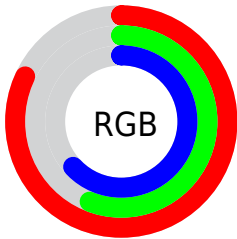
Format	Color
RYB	209, 143, 160
Decimal	13733792
CIELab	66.32, 27.40, 1.22
CIElCh	66, 27.432, 2.550
Yxy	35.7383, 0.3657, 0.3078
Android (android.graphics.Color)	4291923872 (0xFFD18FA0)
YUV	164.6720, -2.3033, 38.8757
Hunter-Lab	59.7815, 22.1688, 4.2409

Details

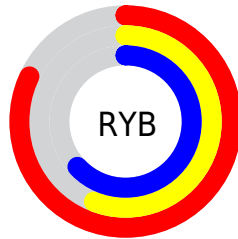
The RYB color **209, 143, 160** is a light color, and the websafe version is hex **CC9999**. A complement of this color would be **143, 181, 209**, and the grayscale version is **165, 165, 165**.

A 20% lighter version of the original color is **255, 197, 215**, and **153, 92, 109** is the 20% darker color. If you saturate the color by 10%, you get **209, 122, 144**, and if you desaturate by 10%, it is **209, 164, 176**.

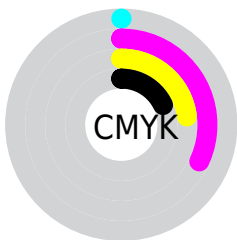
Distribution



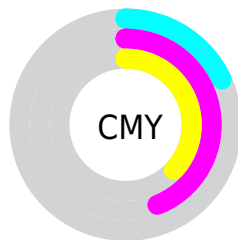
- Red (82%)
- Green (56%)
- Blue (63%)



- Red (82%)
- Yellow (56%)
- Blue (63%)



- Cyan (0%)
- Magenta (32%)
- Yellow (23%)
- Black (18%)



- Cyan (18%)
- Magenta (44%)
- Yellow (37%)

Brightness & Saturation Gradients


These gradients show how the RYB color 209, 143, 160 changes by changing the brightness by 10 percent. The first figure shows a shift by +10% for each color and the second figure -10%.

Similar to the brightness gradients but the following saturation gradients show a change of the RYB color 209, 143, 160 by changing the saturation by 10% instead.

 209, 143, 160

 209, 143, 160

255, 255, 255

 181, 117, 134

 255, 197, 215

 153, 92, 109

 255, 226, 243

 126, 67, 84

255, 254, 255


 100, 44, 61

 75, 21, 40

 50, 0, 19

 24, 0, 1

 0, 0, 0

 209, 143, 160

 209, 143, 160

 209, 122, 144

 209, 164, 176

 209, 101, 129

 209, 185, 191

 209, 80, 113

 209, 206, 207

 209, 59, 98

 209, 219, 227

 209, 39, 82

 209, 231, 247

 209, 18, 67

 209, 233, 255

 209, 0, 54

 209, 232, 255

Harmonies

Analogous

The Analogous color harmony consists of three colors that are next to each other on the color wheel.



195, 147, 184



209, 143, 160



210, 146, 136

Triad

The Triadic color harmony groups three colors that are evenly spaced from another and form a triangle on the color wheel.



209, 143, 160



119, 168, 137



99, 141, 204

Complementary

The Complementary color scheme is a pair of colors which are on the opposite of each other on the color wheel.



209, 143, 160



143, 181, 209

Split Complementary

Split-complementary colors differ from the complementary color scheme. The scheme consists of three colors, the original color and two neighbors of the complement color.



84, 132, 187



209, 143, 160



122, 161, 173

Square

The Square scheme is like the rectangle color scheme, but the four colors are evenly spaced on the color wheel.



209, 143, 160



135, 177, 112



96, 139, 175



133, 155, 210

Rectangle

The Rectangle color scheme consists of four colors that form a rectangle on the color wheel.



209, 143, 160



203, 162, 123



96, 139, 175



91, 137, 200

Sweetspot

The Sweet Spot groups the original color and five complimentary colors.



209, 143, 160



255, 232, 238



191, 143, 209



128, 113, 117



0, 0, 0



128, 128, 128

Same Dimension

The Same Dimension uses a secret algorithm to generate beautiful new colors.



209, 143, 160



255, 158, 183



209, 162, 143



105, 94, 97



168, 0, 43



41, 0, 11

Inverse Universe

The Inverse Universe completely reimagines the original color for something new.



209, 143, 160



255, 158, 183



143, 172, 209



105, 94, 97



168, 0, 43



41, 0, 11

Previews

White Background



This preview shows how the RYB color 209, 143, 160 looks on a white background.

Color Contrast Check

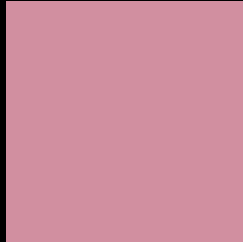
Large Text (above 18pt) WCAG AA × Fail

Any Text WCAG AA × Fail

Large Text (above 18pt) WCAG AAA × Fail

Any Text WCAG AAA × Fail

Black Background



This preview shows how the RYB color 209, 143, 160 looks on a black background.

Color Contrast Check

Large Text (above 18pt) WCAG AA ✓ Pass

Any Text WCAG AA ✓ Pass

Large Text (above 18pt) WCAG AAA ✓ Pass

Any Text WCAG AAA ✓ Pass

If you want to check with other color combinations, try the [Color Contrast Checker](#).

RYB 209, 143, 160 Background



This preview shows how black text looks on a background with the RYB color 209, 143, 160.



This preview shows how white text looks on a background with the RYB color 209, 143, 160.

Color Blindness Simulation

Color vision deficiency is a very complex topic, and I could not describe the different causes any better than Wikipedia does, so if you want to learn more, you should check out their [article about color blindness](#).

Dichromacy



Original Color
209, 143, 160

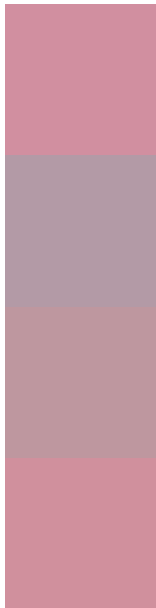
Protanopia
162, 161, 170

Deuteranopia
179, 156, 158



Tritanopia
208, 144, 155

Trichromacy



Original Color

209, 143, 160

Protanomaly

179, 154, 166

Deuteranomaly

190, 151, 159

Tritanomaly

208, 144, 157

Monochromacy



Original Color

209, 143, 160

Achromatopsia

165, 165, 165

Achromatomaly

181, 157, 163

CSS Examples

Text

The CSS property to change the color of the text to RYB 209, 143, 160 is called "color". The color property can be set on classes, ids or directly on the HTML element.

This example shows how text in the color rgb(209, 143, 160) looks like.

```
.text, #text, p{  
    color:rgb(209, 143, 160)  
}
```

If you want to add a text shadow in that color use the text-shadow property, you can generate a text shadow directly with our [CSS Text Shadow Generator](#).

Here you see how black text with a 4 pixel rgb(209, 143, 160) colored shadow looks like.

```
.shadow{ text-shadow: 4px 4px 2px rgb(209, 143, 160) }
```

Border

The CSS property to change the border of an element to RYB 209, 143, 160 is called "border". The border property can be set on classes, ids or directly on the HTML element.

This example shows the color as border, it can be applied via the CSS property "border" or "border-color".

```
.border, #border, table{ border:4px solid rgb(209, 143, 160) }
```

If only the border color should be changed use the property `border-color`.

```
.border{ border-color:rgb(209, 143, 160) }
```

If you want to add a box shadow in that color use:

Here you see how a box with a 4 pixel `rgb(209, 143, 160)` colored shadow looks like.

```
.boxshadow{ -moz-box-shadow:4px 4px 4px  
4px rgb(209, 143, 160); -webkit-box-  
shadow:4px 4px 4px 4px rgb(209, 143, 160);  
box-shadow:4px 4px 4px 4px rgb(209, 143,  
160) }
```

Background

The CSS property to change the background color of an element to RYB 209, 143, 160 is called "background". The background property can be set on classes, ids or directly on the HTML element.

```
.background, #background, body{  
background: rgb(209, 143, 160) }
```

If only the background color should be changed can be used:

```
.background{ background-color: rgb(209,  
143, 160) }
```

This example shows the color as background, it is applied via the CSS property "background".

To optimize and compress your CSS code, you can use our [online CSS compressor and optimizer](#) based on csstidy. If you want to create a linear or radial gradient as background or border, check our [CSS Gradient Generator](#).

Hey! You found this booklet interesting? Support Converting Colors with the new Membership Option!

The pro membership hides all ads, plus gives you double the colors in the color bucket, and more awesome pro features!

[Learn more, Memberships starting at \\$2.50/m!](#)

**Follow me
on Twitter!**

@ConvertingColor