

Converting Colors

`RYB(209, 151, 135)`

Have a look what the booklet for
RYB(209, 151, 135) contains.

RYB(209, 151, 135)	3
<i>Conversions</i>	4
<i>Details</i>	6
<i>Harmonies</i>	11
<i>Previews</i>	23
<i>Color Blindness Simulation</i>	26
<i>CSS Examples</i>	29

Color

$\text{RYB}(209, 151, 135)$

Conversions

Conversions Part 1

Format	Color
Hex	D19487
RGB	209, 148, 135
RGB Percent	82%, 58%, 53%
CMY	0.1804, 0.4190, 0.4706
CMYK	0.00, 0.29, 0.35, 0.18
HSL	11°, 45%, 67%
HSV	11°, 35%, 82%
XYZ	41.2820, 36.5332, 27.7975
YIQ	164.7570, 40.5290, 8.8890

Conversions

Conversions Part 2

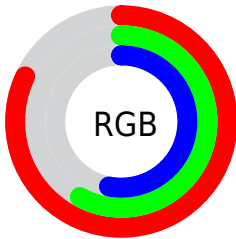
Format	Color
R _Y B	209, 151, 135
Decimal	13735047
CIE Lab	66.93, 21.22, 16.10
CIE LCh	67, 26.635, 37.189
Yxy	36.5332, 0.3909, 0.3459
Android (android.graphics.Color)	4291925127 (0xFFD19487)
YUV	164.7570, -14.6702, 38.8011
Hunter-Lab	60.4427, 16.1396, 15.0425

Details

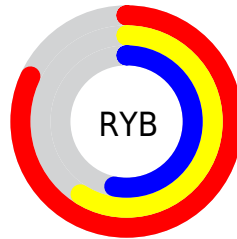
The RYB color **209, 151, 135** is a light color, and the websafe version is hex **CC9999**. A complement of this color would be **135, 168, 209**, and the grayscale version is **165, 165, 165**.

A 20% lighter version of the original color is **255, 206, 188**, and **153, 100, 85** is the 20% darker color. If you saturate the color by 10%, you get **209, 135, 114**, and if you desaturate by 10%, it is **209, 167, 156**.

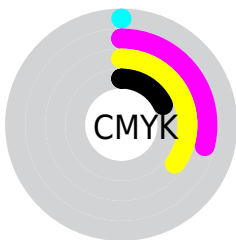
Distribution



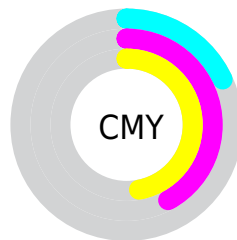
- Red (82%)
- Green (58%)
- Blue (53%)



- Red (82%)
- Yellow (59%)
- Blue (53%)



- Cyan (0%)
- Magenta (29%)
- Yellow (35%)
- Black (18%)




- Cyan (18%)
- Magenta (42%)
- Yellow (47%)

Brightness & Saturation Gradients


These gradients show how the RYB color 209, 151, 135 changes by changing the brightness by 10 percent. The first figure shows a shift by +10% for each color and the second figure -10%.

Similar to the brightness gradients but the following saturation gradients show a change of the RYB color 209, 151, 135 by changing the saturation by 10% instead.

 209, 151, 135

 209, 151, 135

255, 255, 255

 181, 124, 110

 255, 207, 188

 153, 100, 85

 255, 240, 216

 126, 75, 62

 244, 255, 244

 99, 52, 40


 73, 29, 20

 49, 6, 0

 19, 0, 0


 0, 0, 0

 209, 151, 135

 209, 151, 135

 209, 135, 114

 209, 167, 156

 209, 119, 93

 209, 184, 177

 209, 103, 72

 209, 200, 198

 209, 85, 51

 209, 213, 219

 209, 69, 31

 209, 223, 240

 209, 52, 10

 209, 231, 255

 209, 45, 0

 209, 232, 255

Harmonies

Analogous

The Analogous color harmony consists of three colors that are next to each other on the color wheel.



210, 145, 158



209, 151, 135



196, 187, 119

Triad

The Triadic color harmony groups three colors that are evenly spaced from another and form a triangle on the color wheel.



209, 151, 135



120, 158, 175



141, 158, 210

Complementary

The Complementary color scheme is a pair of colors which are on the opposite of each other on the color wheel.



209, 151, 135



135, 168, 209

Split Complementary

Split-complementary colors differ from the complementary color scheme. The scheme consists of three colors, the original color and two neighbors of the complement color.



108, 146, 206



209, 151, 135



97, 139, 176

Square

The Square scheme is like the rectangle color scheme, but the four colors are evenly spaced on the color wheel.



209, 151, 135



124, 170, 146



90, 136, 191



174, 155, 201

Rectangle

The Rectangle color scheme consists of four colors that form a rectangle on the color wheel.



209, 151, 135



146, 182, 115



90, 136, 191



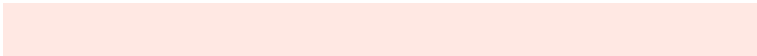
129, 154, 210

Sweetspot

The Sweet Spot groups the original color and five complimentary colors.



209, 151, 135



255, 233, 227



209, 135, 197



128, 115, 111



0, 0, 0



128, 128, 128

Same Dimension

The Same Dimension uses a secret algorithm to generate beautiful new colors.



209, 151, 135



255, 171, 148



173, 209, 135



105, 96, 94



168, 37, 0



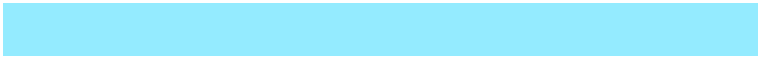
41, 8, 0

Inverse Universe

The Inverse Universe completely reimagines the original color for something new.



135, 168, 209



148, 196, 255



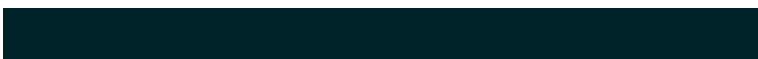
135, 154, 209



94, 99, 105



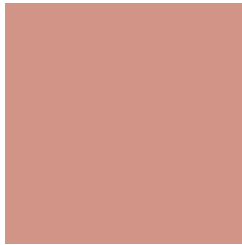
0, 76, 168



0, 19, 41

Previews

White Background



This preview shows how the RYB color 209, 151, 135 looks on a white background.

Color Contrast Check

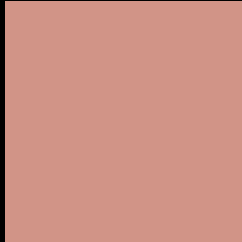
Large Text (above 18pt) WCAG AA × Fail

Any Text WCAG AA × Fail

Large Text (above 18pt) WCAG AAA × Fail

Any Text WCAG AAA × Fail

Black Background



This preview shows how the RYB color 209, 151, 135 looks on a black background.

Color Contrast Check

Large Text (above 18pt) WCAG AA ✓ Pass

Any Text WCAG AA ✓ Pass

Large Text (above 18pt) WCAG AAA ✓ Pass

Any Text WCAG AAA ✓ Pass

If you want to check with other color combinations, try the [Color Contrast Checker](#).

RYB 209, 151, 135 Background



This preview shows how black text looks on a background with the RYB color 209, 151, 135.



This preview shows how white text looks on a background with the RYB color 209, 151, 135.

Color Blindness Simulation

Color vision deficiency is a very complex topic, and I could not describe the different causes any better than Wikipedia does, so if you want to learn more, you should check out their [article about color blindness](#).


Dichromacy



Original Color
209, 151, 135

Protanopia
153, 171, 142

Deuteranopia
189, 175, 133



Tritanopia
211, 145, 156

Trichromacy



Original Color

209, 151, 135

Protanomaly

185, 171, 139

Deuteranomaly

196, 164, 134

Tritanomaly

210, 146, 148

Monochromacy



Original Color

209, 151, 135

Achromatopsia

165, 165, 165

Achromatomaly

181, 160, 154

CSS Examples

Text

The CSS property to change the color of the text to RYB 209, 151, 135 is called "color". The color property can be set on classes, ids or directly on the HTML element.

This example shows how text in the color `rgb(209, 148, 135)` looks like.

```
.text, #text, p{  
    color:rgb(209, 148, 135)  
}
```

If you want to add a text shadow in that color use the text-shadow property, you can generate a text shadow directly with our [CSS Text Shadow Generator](#).

Here you see how black text with a 4 pixel rgb(209, 148, 135) colored shadow looks like.

```
.shadow{ text-shadow: 4px 4px 2px rgb(209, 148, 135) }
```

Border

The CSS property to change the border of an element to RYB 209, 151, 135 is called "border". The border property can be set on classes, ids or directly on the HTML element.

This example shows the color as border, it can be applied via the CSS property "border" or "border-color".

```
.border, #border, table{ border:4px solid rgb(209, 148, 135) }
```

If only the border color should be changed use the property `border-color`.

```
.border{ border-color:rgb(209, 148, 135) }
```

If you want to add a box shadow in that color use:

Here you see how a box with a 4 pixel `rgb(209, 148, 135)` colored shadow looks like.

```
.boxshadow{ -moz-box-shadow:4px 4px 4px  
4px rgb(209, 148, 135); -webkit-box-  
shadow:4px 4px 4px 4px rgb(209, 148, 135);  
box-shadow:4px 4px 4px 4px rgb(209, 148,  
135) }
```

Background

The CSS property to change the background color of an element to RGB 209, 148, 135 is called "background". The background property can be set on classes, ids or directly on the HTML element.

```
.background, #background, body{  
background: rgb(209, 148, 135) }
```

If only the background color should be changed can be used:

```
.background{ background-color: rgb(209,  
148, 135) }
```

This example shows the color as background, it is applied via the CSS property "background".

To optimize and compress your CSS code, you can use our [online CSS compressor and optimizer](#) based on csstidy. If you want to create a linear or radial gradient as background or border, check our [CSS Gradient Generator](#).

Hey! You found this booklet interesting? Support Converting Colors with the new Membership Option!

The pro membership hides all ads, plus gives you double the colors in the color bucket, and more awesome pro features!

[Learn more, Memberships starting at \\$2.50/m!](#)

**Follow me
on Twitter!**

@ConvertingColor