

Converting Colors

`RYB(209, 167, 156)`

Have a look what the booklet for
RYB(209, 167, 156) contains.

RYB(209, 167, 156)	3
<i>Conversions</i>	4
<i>Details</i>	6
<i>Harmonies</i>	11
<i>Previews</i>	23
<i>Color Blindness Simulation</i>	26
<i>CSS Examples</i>	29

Color

R_YB(209, 167, 156)

Conversions

Conversions Part 1

Format	Color
Hex	D1A59C
RGB	209, 165, 156
RGB Percent	82%, 65%, 61%
CMY	0.1804, 0.3525, 0.3882
CMYK	0.00, 0.21, 0.25, 0.18
HSL	10°, 37%, 72%
HSV	10°, 25%, 82%
XYZ	45.7701, 42.9054, 37.3217
YIQ	177.1300, 29.1130, 6.5290

Conversions

Conversions Part 2

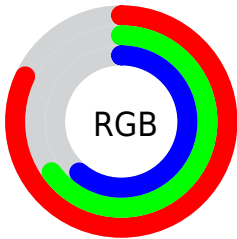
Format	Color
R _Y B	209, 167, 156
Decimal	13739420
CIE Lab	71.49, 14.79, 10.88
CIE LCh	71, 18.362, 36.327
Yxy	42.9054, 0.3633, 0.3405
Android (android.graphics.Color)	4291929500 (0xFFD1A59C)
YUV	177.1300, -10.4171, 27.9500
Hunter-Lab	65.5022, 10.0993, 12.0694

Details

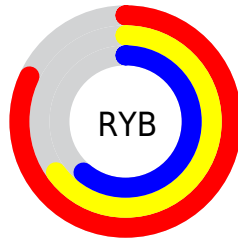
The RYB color **209, 167, 156** is a light color, and the websafe version is hex **CC9999**. A complement of this color would be **156, 180, 209**, and the grayscale version is **177, 177, 177**.

A 20% lighter version of the original color is **255, 223, 210**, and **154, 115, 105** is the 20% darker color. If you saturate the color by 10%, you get **209, 151, 135**, and if you desaturate by 10%, it is **209, 183, 177**.

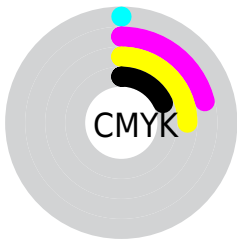
Distribution



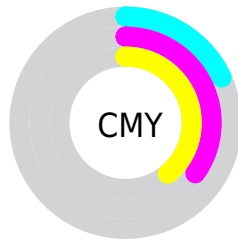
- Red (82%)
- Green (65%)
- Blue (61%)



- Red (82%)
- Yellow (65%)
- Blue (61%)



- Cyan (0%)
- Magenta (21%)
- Yellow (25%)
- Black (18%)



- Cyan (18%)
- Magenta (35%)
- Yellow (39%)

Brightness & Saturation Gradients


These gradients show how the RYB color 209, 167, 156 changes by changing the brightness by 10 percent. The first figure shows a shift by +10% for each color and the second figure -10%.

Similar to the brightness gradients but the following saturation gradients show a change of the RYB color 209, 167, 156 by changing the saturation by 10% instead.

 209, 167, 156

 209, 167, 156

255, 255, 255


 181, 141, 130

 255, 223, 210

 154, 115, 105

 249, 255, 239

 127, 91, 81

 101, 66, 58

 76, 44, 36

 52, 24, 15

 32, 0, 0

 0, 0, 0

 209, 167, 156

 209, 167, 156

■ 209, 151, 135

■ 209, 183, 177

■ 209, 133, 114

■ 209, 200, 198

■ 209, 117, 93

■ 209, 213, 219

■ 209, 101, 72

■ 209, 223, 240

■ 209, 85, 52

■ 209, 231, 255

■ 209, 67, 31

■ 209, 232, 255

■ 209, 51, 10

■ 209, 43, 0

Harmonies

Analogous

The Analogous color harmony consists of three colors that are next to each other on the color wheel.



209, 163, 172



209, 167, 156



200, 191, 145

Triad

The Triadic color harmony groups three colors that are evenly spaced from another and form a triangle on the color wheel.



209, 167, 156



147, 174, 184



161, 172, 208

Complementary

The Complementary color scheme is a pair of colors which are on the opposite of each other on the color wheel.



209, 167, 156



156, 180, 209

Split Complementary

Split-complementary colors differ from the complementary color scheme. The scheme consists of three colors, the original color and two neighbors of the complement color.



141, 165, 205



209, 167, 156



134, 161, 185

Square

The Square scheme is like the rectangle color scheme, but the four colors are evenly spaced on the color wheel.



209, 167, 156



148, 180, 162



131, 160, 194



183, 170, 202

Rectangle

The Rectangle color scheme consists of four colors that form a rectangle on the color wheel.



209, 167, 156



168, 190, 142



131, 160, 194



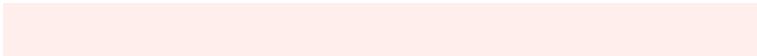
154, 170, 208

Sweetspot

The Sweet Spot groups the original color and five complimentary colors.



209, 167, 156



255, 239, 235



209, 156, 200



128, 117, 115



0, 0, 0



128, 128, 128

Same Dimension

The Same Dimension uses a secret algorithm to generate beautiful new colors.



209, 167, 156



255, 195, 179



183, 209, 156



105, 96, 94



168, 35, 0



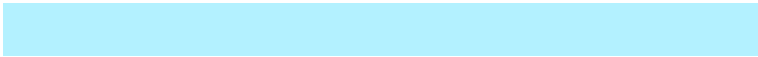
41, 8, 0

Inverse Universe

The Inverse Universe completely reimagines the original color for something new.



156, 180, 209



179, 213, 255



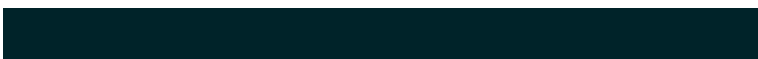
156, 169, 209



94, 99, 105



0, 76, 168



0, 19, 41

Previews

White Background



This preview shows how the RYB color 209, 167, 156 looks on a white background.

Color Contrast Check

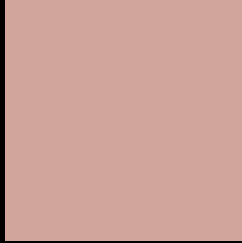
Large Text (above 18pt) WCAG AA × Fail

Any Text WCAG AA × Fail

Large Text (above 18pt) WCAG AAA × Fail

Any Text WCAG AAA × Fail

Black Background



This preview shows how the RYB color 209, 167, 156 looks on a black background.

Color Contrast Check

Large Text (above 18pt) WCAG AA ✓ Pass

Any Text WCAG AA ✓ Pass

Large Text (above 18pt) WCAG AAA ✓ Pass

Any Text WCAG AAA ✓ Pass

If you want to check with other color combinations, try the [Color Contrast Checker](#).

RYB 209, 167, 156 Background



This preview shows how black text looks on a background with the RYB color 209, 167, 156.



This preview shows how white text looks on a background with the RYB color 209, 167, 156.

Color Blindness Simulation

Color vision deficiency is a very complex topic, and I could not describe the different causes any better than Wikipedia does, so if you want to learn more, you should check out their [article about color blindness](#).

Dichromacy



Original Color
209, 167, 156

Protanopia
172, 182, 161

Deuteranopia
200, 175, 155



Tritanopia
211, 162, 175

Trichromacy



Original Color

209, 167, 156

Protanomaly

192, 178, 159

Deuteranomaly

203, 173, 155

Tritanomaly

210, 163, 168

Monochromacy



Original Color

209, 167, 156

Achromatopsia

177, 177, 177

Achromatomaly

189, 174, 169

CSS Examples

Text

The CSS property to change the color of the text to RYB 209, 167, 156 is called "color". The color property can be set on classes, ids or directly on the HTML element.

This example shows how text in the color `rgb(209, 165, 156)` looks like.

```
.text, #text, p{  
    color:rgb(209, 165, 156)  
}
```

If you want to add a text shadow in that color use the text-shadow property, you can generate a text shadow directly with our [CSS Text Shadow Generator](#).

Here you see how black text with a 4 pixel rgb(209, 165, 156) colored shadow looks like.

```
.shadow{ text-shadow: 4px 4px 2px rgb(209, 165, 156) }
```

Border

The CSS property to change the border of an element to RYB 209, 167, 156 is called "border". The border property can be set on classes, ids or directly on the HTML element.

This example shows the color as border, it can be applied via the CSS property "border" or "border-color".

```
.border, #border, table{ border:4px solid rgb(209, 165, 156) }
```

If only the border color should be changed use the property `border-color`.

```
.border{ border-color:rgb(209, 165, 156) }
```

If you want to add a box shadow in that color use:

Here you see how a box with a 4 pixel `rgb(209, 165, 156)` colored shadow looks like.

```
.boxshadow{ -moz-box-shadow:4px 4px 4px  
4px rgb(209, 165, 156); -webkit-box-  
shadow:4px 4px 4px 4px rgb(209, 165, 156);  
box-shadow:4px 4px 4px 4px rgb(209, 165,  
156) }
```

Background

The CSS property to change the background color of an element to RYB 209, 167, 156 is called "background". The background property can be set on classes, ids or directly on the HTML element.

```
.background, #background, body{  
background: rgb(209, 165, 156) }
```

If only the background color should be changed can be used:

```
.background{ background-color: rgb(209,  
165, 156) }
```

This example shows the color as background, it is applied via the CSS property "background".

To optimize and compress your CSS code, you can use our [online CSS compressor and optimizer](#) based on csstidy. If you want to create a linear or radial gradient as background or border, check our [CSS Gradient Generator](#).

Hey! You found this booklet interesting? Support Converting Colors with the new Membership Option!

The pro membership hides all ads, plus gives you double the colors in the color bucket, and more awesome pro features!

[Learn more, Memberships starting at \\$2.50/m!](#)

**Follow me
on Twitter!**

@ConvertingColor