

Converting Colors

`RYB(209, 174, 174)`

Have a look what the booklet for
RYB(209, 174, 174) contains.

RYB(209, 174, 174)	3
<i>Conversions</i>	4
<i>Details</i>	6
<i>Harmonies</i>	11
<i>Previews</i>	23
<i>Color Blindness Simulation</i>	26
<i>CSS Examples</i>	29

Color

RYP(209, 174, 174)

Conversions

Conversions Part 1	
Format	Color
Hex	D1AEAE
RGB	209, 174, 174
RGB Percent	82%, 68%, 68%
CMY	0.1804, 0.3176, 0.3176
CMYK	0.00, 0.17, 0.17, 0.18
HSL	0°, 28%, 75%
HSV	0°, 17%, 82%
XYZ	49.0705, 46.8834, 46.5075
YIQ	184.4650, 20.8600, 7.4200

Conversions

Conversions Part 2

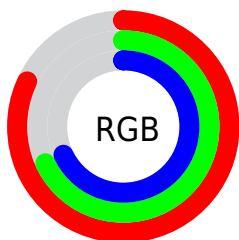
Format	Color
RYB	209, 174, 174
Decimal	13741742
CIELab	74.12, 12.68, 4.75
CIELCh	74, 13.544, 20.533
Yxy	46.8834, 0.3444, 0.3291
Android (android.graphics.Color)	4291931822 (0xFFD1AEAE)
YUV	184.4650, -5.1592, 21.5172
Hunter-Lab	68.4715, 8.0982, 7.6588

Details

The RYB color **209, 174, 174** is a light color, and the websafe version is hex **CC9999**. A complement of this color would be **174, 192, 209**, and the grayscale version is **185, 185, 185**.

A 20% lighter version of the original color is **255, 230, 229**, and **154, 122, 122** is the 20% darker color. If you saturate the color by 10%, you get **209, 153, 153**, and if you desaturate by 10%, it is **209, 195, 195**.

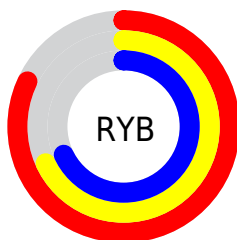
Distribution



Red (82%)

Green (68%)

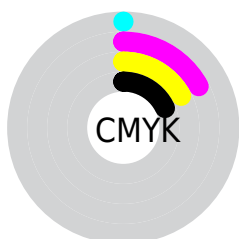
Blue (68%)



Red (82%)

Yellow (68%)

Blue (68%)

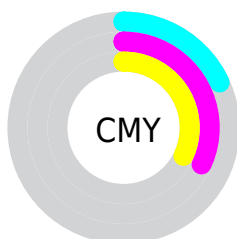


Cyan (0%)

Magenta (17%)

Yellow (17%)

Black (18%)



Cyan (18%)

Magenta (32%)

Yellow (32%)

Brightness & Saturation Gradients


These gradients show how the RYB color 209, 174, 174 changes by changing the brightness by 10 percent. The first figure shows a shift by +10% for each color and the second figure -10%.

Similar to the brightness gradients but the following saturation gradients show a change of the RYB color 209, 174, 174 by changing the saturation by 10% instead.


 209, 174, 174

 209, 174, 174

255, 255, 255

 181, 147, 147

 255, 230, 229

 154, 122, 122

 128, 97, 97

 102, 73, 73

 78, 50, 51

 54, 29, 30

 34, 5, 4


 0, 0, 0

 209, 174, 174


 209, 174, 174

 209, 153, 153

 209, 195, 195

 209, 132, 132

 209, 213, 216

 209, 111, 111

 209, 223, 237

 209, 90, 90

 209, 232, 255

 209, 70, 70

 209, 49, 49

 209, 28, 28

 209, 7, 7

 209, 0, 0

Harmonies

Analogous

The Analogous color harmony consists of three colors that are next to each other on the color wheel.



205, 174, 187



209, 174, 174



206, 182, 163

Triad

The Triadic color harmony groups three colors that are evenly spaced from another and form a triangle on the color wheel.



209, 174, 174



166, 187, 184



164, 178, 206

Complementary

The Complementary color scheme is a pair of colors which are on the opposite of each other on the color wheel.



209, 174, 174



174, 192, 209

Split Complementary

Split-complementary colors differ from the complementary color scheme. The scheme consists of three colors, the original color and two neighbors of the complement color.



153, 173, 201



209, 174, 174



157, 176, 189

Square

The Square scheme is like the rectangle color scheme, but the four colors are evenly spaced on the color wheel.



209, 174, 174



159, 184, 160



151, 170, 190



180, 180, 205

Rectangle

The Rectangle color scheme consists of four colors that form a rectangle on the color wheel.



209, 174, 174



200, 198, 159



151, 170, 190



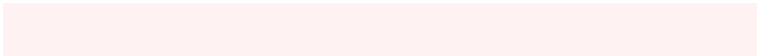
160, 176, 205

Sweetspot

The Sweet Spot groups the original color and five complimentary colors.



209, 174, 174



255, 242, 242



209, 174, 209



128, 120, 120



0, 0, 0



128, 128, 128

Same Dimension

The Same Dimension uses a secret algorithm to generate beautiful new colors.



209, 174, 174



255, 204, 204



207, 209, 174



105, 94, 94



168, 0, 0



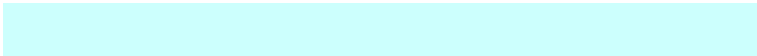
41, 0, 0

Inverse Universe

The Inverse Universe completely reimagines the original color for something new.



174, 192, 209



204, 230, 255



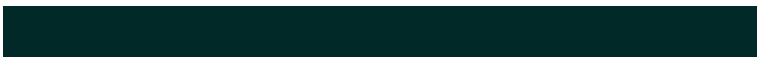
174, 186, 209



94, 100, 105



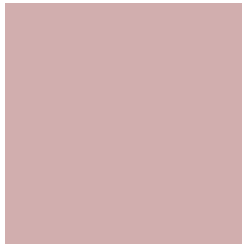
0, 84, 168



0, 21, 41

Previews

White Background



This preview shows how the RYB color 209, 174, 174 looks on a white background.

Color Contrast Check

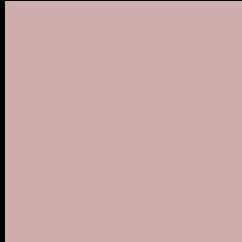
Large Text (above 18pt) WCAG AA × Fail

Any Text WCAG AA × Fail

Large Text (above 18pt) WCAG AAA × Fail

Any Text WCAG AAA × Fail

Black Background



This preview shows how the RYB color 209, 174, 174 looks on a black background.

Color Contrast Check

Large Text (above 18pt) WCAG AA ✓ Pass

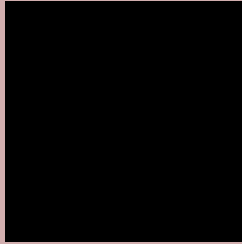
Any Text WCAG AA ✓ Pass

Large Text (above 18pt) WCAG AAA ✓ Pass

Any Text WCAG AAA ✓ Pass

If you want to check with other color combinations, try the [Color Contrast Checker](#).

RYB 209, 174, 174 Background



This preview shows how black text looks on a background with the RYB color 209, 174, 174.



This preview shows how white text looks on a background with the RYB color 209, 174, 174.

Color Blindness Simulation

Color vision deficiency is a very complex topic, and I could not describe the different causes any better than Wikipedia does, so if you want to learn more, you should check out their [article about color blindness](#).

Dichromacy



Original Color

209, 174, 174

Protanopia

187, 185, 178

Deuteranopia

203, 176, 174






Tritanopia

210, 172, 186

Trichromacy

	Original Color 209, 174, 174
	Protanomaly 195, 179, 177
	Deuteranomaly 205, 175, 174
	Tritanomaly 210, 173, 182

Monochromacy

	Original Color 209, 174, 174
	Achromatopsia 184, 184, 184
	Achromatomaly 193, 180, 180

CSS Examples

Text

The CSS property to change the color of the text to RYB 209, 174, 174 is called "color". The color property can be set on classes, ids or directly on the HTML element.

This example shows how text in the color rgb(209, 174, 174) looks like.

```
.text, #text, p{  
    color:rgb(209, 174, 174)  
}
```

If you want to add a text shadow in that color use the text-shadow property, you can generate a text shadow directly with our [CSS Text Shadow Generator](#).

Here you see how black text with a 4 pixel rgb(209, 174, 174) colored shadow looks like.

```
.shadow{ text-shadow: 4px 4px 2px rgb(209, 174, 174) }
```

Border

The CSS property to change the border of an element to RYB 209, 174, 174 is called "border". The border property can be set on classes, ids or directly on the HTML element.

This example shows the color as border, it can be applied via the CSS property "border" or "border-color".

```
.border, #border, table{ border:4px solid rgb(209, 174, 174) }
```

If only the border color should be changed use the property border-color.

```
.border{ border-color:rgb(209, 174, 174) }
```

If you want to add a box shadow in that color use:

Here you see how a box with a 4 pixel rgb(209, 174, 174) colored shadow looks like.

```
.boxshadow{ -moz-box-shadow:4px 4px 4px  
4px rgb(209, 174, 174); -webkit-box-  
shadow:4px 4px 4px 4px rgb(209, 174, 174);  
box-shadow:4px 4px 4px 4px rgb(209, 174,  
174) }
```

Background

The CSS property to change the background color of an element to RGB 209, 174, 174 is called "background". The background property can be set on classes, ids or directly on the HTML element.

```
.background, #background, body{  
background: rgb(209, 174, 174) }
```

If only the background color should be changed can be used:

```
.background{ background-color: rgb(209,  
174, 174) }
```

This example shows the color as background, it is applied via the CSS property "background".

To optimize and compress your CSS code, you can use our [online CSS compressor and optimizer](#) based on csstidy. If you want to create a linear or radial gradient as background or border, check our [CSS Gradient Generator](#).

Hey! You found this booklet
interesting? Support Converting
Colors with the new Membership
Option!

The pro membership hides all ads, plus gives you
double the colors in the color bucket, and more
awesome pro features!

[Learn more, Memberships starting at \\$2.50/m!](#)

**Follow me
on Twitter!**

@ConvertingColor