

Converting Colors

`RYB(209, 188, 197)`

Have a look what the booklet for RYB(209, 188, 197) contains.

RYB(209, 188, 197)	3
<i>Conversions</i>	4
<i>Details</i>	6
<i>Harmonies</i>	11
<i>Previews</i>	23
<i>Color Blindness Simulation</i>	26
<i>CSS Examples</i>	29

Color

$\text{RYB}(209, 188, 197)$

Conversions

Conversions Part 1

Format	Color
Hex	D1BCC5
RGB	209, 188, 197
RGB Percent	82%, 74%, 77%
CMY	0.1804, 0.2627, 0.2275
CMYK	0.00, 0.10, 0.06, 0.18
HSL	334°, 19%, 78%
HSV	334°, 10%, 82%
XYZ	54.3558, 53.5530, 60.2952
YIQ	195.3050, 9.6270, 7.2510

Conversions

Conversions Part 2

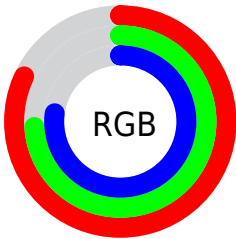
Format	Color
R_{YB}	209, 188, 197
Decimal	13745349
CIE _{Lab}	78.20, 8.99, -1.82
CIE _{LCh}	78, 9.170, 348.536
Yxy	53.5530, 0.3232, 0.3184
Android (android.graphics.Color)	4291935429 (0xFFD1BCC5)
YUV	195.3050, 0.8356, 12.0105
Hunter-Lab	73.1799, 4.5195, 2.3750

Details

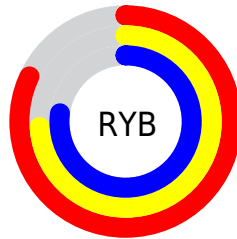
The RYB color **209, 188, 197** is a light color, and the websafe version is hex **CCCCCC**. A complement of this color would be **188, 201, 209**, and the grayscale version is **195, 195, 195**.

A 20% lighter version of the original color is **255, 244, 254**, and **154, 135, 143** is the 20% darker color. If you saturate the color by 10%, you get **209, 167, 185**, and if you desaturate by 10%, it is **209, 209, 209**.

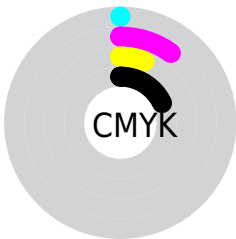
Distribution



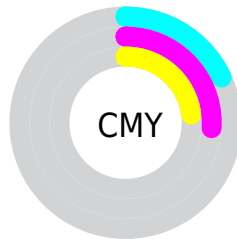
- Red (82%)
- Green (74%)
- Blue (77%)



- Red (82%)
- Yellow (74%)
- Blue (77%)



- Cyan (0%)
- Magenta (10%)
- Yellow (6%)
- Black (18%)



- Cyan (18%)
- Magenta (26%)
- Yellow (23%)

Brightness & Saturation Gradients

These gradients show how the RYB color 209, 188, 197 changes by changing the brightness by 10 percent. The first figure shows a shift by +10% for each color and the second figure -10%.

Similar to the brightness gradients but the following saturation gradients show a change of the RYB color 209, 188, 197 by changing the saturation by 10% instead.


 209, 188, 197

255, 255, 255

 255, 244, 254

 209, 188, 197

 181, 161, 170

 154, 135, 143

 128, 109, 118

 103, 85, 93

 79, 62, 70

 56, 40, 47


 34, 20, 27

 3, 0, 0


 0, 0, 0

 209, 188, 197

 209, 188, 197

 209, 167, 185


 209, 209, 209

 209, 146, 173

 209, 222, 230

 209, 125, 161

 209, 236, 251

 209, 104, 149

 209, 235, 255

 209, 84, 137

 209, 232, 255

 209, 63, 125

 209, 42, 113

 209, 21, 101

 209, 0, 90

Harmonies

Analogous

The Analogous color harmony consists of three colors that are next to each other on the color wheel.



201, 190, 205



209, 188, 197



212, 188, 188

Triad

The Triadic color harmony groups three colors that are evenly spaced from another and form a triangle on the color wheel.



209, 188, 197



178, 195, 177



174, 187, 206

Complementary

The Complementary color scheme is a pair of colors which are on the opposite of each other on the color wheel.



209, 188, 197



188, 201, 209

Split Complementary

Split-complementary colors differ from the complementary color scheme. The scheme consists of three colors, the original color and two neighbors of the complement color.



173, 186, 198



209, 188, 197



182, 197, 194

Square

The Square scheme is like the rectangle color scheme, but the four colors are evenly spaced on the color wheel.



209, 188, 197



199, 204, 177



177, 190, 198



181, 190, 210

Rectangle

The Rectangle color scheme consists of four colors that form a rectangle on the color wheel.



209, 188, 197



211, 191, 183



177, 190, 198



173, 187, 204

Sweetspot

The Sweet Spot groups the original color and five complimentary colors.



209, 188, 197



255, 247, 251



200, 188, 209



128, 122, 125



0, 0, 0



128, 128, 128

Same Dimension

The Same Dimension uses a secret algorithm to generate beautiful new colors.



209, 188, 197



255, 224, 238



209, 189, 188



105, 94, 99



168, 0, 72



41, 0, 17

Inverse Universe

The Inverse Universe completely reimagines the original color for something new.



209, 188, 197



255, 224, 238



188, 198, 209



105, 94, 99



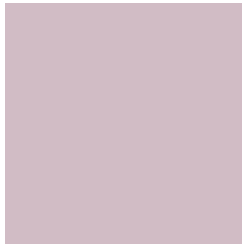
168, 0, 72



41, 0, 17

Previews

White Background



This preview shows how the RYB color 209, 188, 197 looks on a white background.

Color Contrast Check

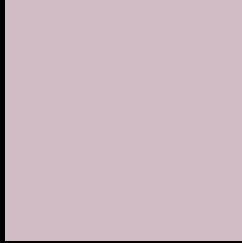
Large Text (above 18pt) WCAG AA × Fail

Any Text WCAG AA × Fail

Large Text (above 18pt) WCAG AAA × Fail

Any Text WCAG AAA × Fail

Black Background



This preview shows how the RYB color 209, 188, 197 looks on a black background.

Color Contrast Check

Large Text (above 18pt) WCAG AA ✓ Pass

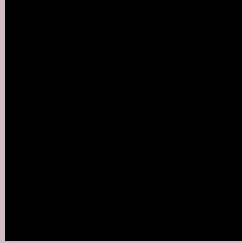
Any Text WCAG AA ✓ Pass

Large Text (above 18pt) WCAG AAA ✓ Pass

Any Text WCAG AAA ✓ Pass

If you want to check with other color combinations, try the [Color Contrast Checker](#).

R Y B 209, 188, 197 Background



This preview shows how black text looks on a background with the RYB color 209, 188, 197.



This preview shows how white text looks on a background with the RYB color 209, 188, 197.

Color Blindness Simulation

Color vision deficiency is a very complex topic, and I could not describe the different causes any better than Wikipedia does, so if you want to learn more, you should check out their [article about color blindness](#).

Dichromacy



Original Color


209, 188, 197

Protanopia

195, 192, 200

Deuteranopia

210, 187, 197



Tritanopia
210, 187, 202

Trichromacy



Original Color

209, 188, 197

Protanomaly

200, 191, 199

Deuteranomaly

210, 187, 197

Tritanomaly

210, 187, 200

Monochromacy



Original Color

209, 188, 197

Achromatopsia

195, 195, 195

Achromatomaly

200, 192, 196

CSS Examples

Text

The CSS property to change the color of the text to RYB 209, 188, 197 is called "color". The color property can be set on classes, ids or directly on the HTML element.

This example shows how text in the color rgb(209, 188, 197) looks like.

```
.text, #text, p{  
    color:rgb(209, 188, 197)  
}
```

If you want to add a text shadow in that color use the text-shadow property, you can generate a text shadow directly with our [CSS Text Shadow Generator](#).

Here you see how black text with a 4 pixel rgb(209, 188, 197) colored shadow looks like.

```
.shadow{ text-shadow: 4px 4px 2px rgb(209, 188, 197) }
```

Border

The CSS property to change the border of an element to RYB 209, 188, 197 is called "border". The border property can be set on classes, ids or directly on the HTML element.

This example shows the color as border, it can be applied via the CSS property "border" or "border-color".

```
.border, #border, table{ border:4px solid rgb(209, 188, 197) }
```

If only the border color should be changed use the property `border-color`.

```
.border{ border-color:rgb(209, 188, 197) }
```

If you want to add a box shadow in that color use:

Here you see how a box with a 4 pixel `rgb(209, 188, 197)` colored shadow looks like.

```
.boxshadow{ -moz-box-shadow:4px 4px 4px  
4px rgb(209, 188, 197); -webkit-box-  
shadow:4px 4px 4px 4px rgb(209, 188, 197);  
box-shadow:4px 4px 4px 4px rgb(209, 188,  
197) }
```

Background

The CSS property to change the background color of an element to RYB 209, 188, 197 is called "background". The background property can be set on classes, ids or directly on the HTML element.

```
.background, #background, body{  
background: rgb(209, 188, 197) }
```

If only the background color should be changed can be used:

```
.background{ background-color: rgb(209,  
188, 197) }
```

This example shows the color as background, it is applied via the CSS property "background".

To optimize and compress your CSS code, you can use our [online CSS compressor and optimizer](#) based on csstidy. If you want to create a linear or radial gradient as background or border, check our [CSS Gradient Generator](#).

Hey! You found this booklet interesting? Support Converting Colors with the new Membership Option!

The pro membership hides all ads, plus gives you double the colors in the color bucket, and more awesome pro features!

[Learn more, Memberships starting at \\$2.50/m!](#)

**Follow me
on Twitter!**

@ConvertingColor