

Converting Colors

`RYB(209, 217, 149)`

Have a look what the booklet for
RYB(209, 217, 149) contains.

RYB(209, 217, 149)	3
<i>Conversions</i>	4
<i>Details</i>	6
<i>Harmonies</i>	11
<i>Previews</i>	23
<i>Color Blindness Simulation</i>	26
<i>CSS Examples</i>	29

Color

R_YB(209, 217, 149)

Conversions

Conversions Part 1

Format	Color
Hex	D9B995
RGB	217, 185, 149
RGB Percent	85%, 73%, 58%
CMY	0.1490, 0.2740, 0.4157
CMYK	0.00, 0.15, 0.31, 0.15
HSL	32°, 47%, 72%
HSV	32°, 31%, 85%
XYZ	51.4152, 51.6719, 35.6976
YIQ	190.4640, 30.6280, -4.4120

Conversions

Conversions Part 2

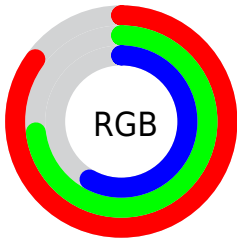
Format	Color
R_{YB}	209, 217, 149
Decimal	14268821
CIE _{Lab}	77.08, 6.17, 22.58
CIE _{LCh}	77, 23.411, 74.707
Yxy	51.6719, 0.3705, 0.3723
Android (android.graphics.Color)	4292458901 (0xFFD9B995)
YUV	190.4640, -20.4418, 23.2721
Hunter-Lab	71.8832, 1.8785, 20.8745

Details

The RYB color **209, 217, 149** is a light color, and the websafe version is hex **FFCC99**. A complement of this color would be **149, 171, 217**, and the grayscale version is **191, 191, 191**.

A 20% lighter version of the original color is **222, 255, 203**, and **152, 161, 98** is the 20% darker color. If you saturate the color by 10%, you get **206, 217, 127**, and if you desaturate by 10%, it is **213, 217, 171**.

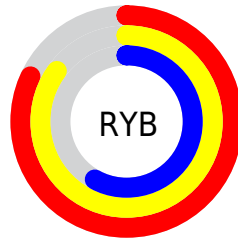
Distribution



Red (85%)

Green (73%)

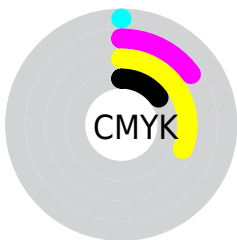
Blue (58%)



Red (82%)

Yellow (85%)

Blue (58%)

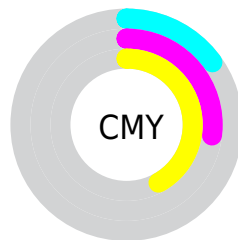


Cyan (0%)

Magenta (15%)

Yellow (31%)

Black (15%)



Cyan (15%)

Magenta (27%)

Yellow (42%)

Brightness & Saturation Gradients

These gradients show how the RYB color 209, 217, 149 changes by changing the brightness by 10 percent. The first figure shows a shift by +10% for each color and the second figure -10%.

Similar to the brightness gradients but the following saturation gradients show a change of the RYB color 209, 217, 149 by changing the saturation by 10% instead.


 209, 217, 149

255, 255, 255

 222, 255, 203

 231, 255, 231

 209, 217, 149

 181, 189, 123

 152, 161, 98

 123, 134, 74

 96, 108, 51

 69, 83, 29

 41, 59, 6

 33, 35, 0

 0, 0, 0

 209, 217, 149


 209, 217, 149

 206, 217, 127


 213, 217, 171

 204, 217, 106


 215, 217, 192

 200, 217, 84


 216, 217, 214

 200, 217, 62

 217, 223, 236

 198, 217, 41

 217, 230, 255

 194, 217, 19

 217, 233, 255

 192, 217, 0

 217, 236, 255

Harmonies

Analogous

The Analogous color harmony consists of three colors that are next to each other on the color wheel.



231, 185, 161



209, 217, 149



152, 196, 148

Triad

The Triadic color harmony groups three colors that are evenly spaced from another and form a triangle on the color wheel.



209, 217, 149



132, 168, 203



207, 181, 221

Complementary

The Complementary color scheme is a pair of colors which are on the opposite of each other on the color wheel.



209, 217, 149



149, 171, 217

Split Complementary

Split-complementary colors differ from the complementary color scheme. The scheme consists of three colors, the original color and two neighbors of the complement color.



179, 187, 232



209, 217, 149



132, 171, 220

Square

The Square scheme is like the rectangle color scheme, but the four colors are evenly spaced on the color wheel.



209, 217, 149



148, 183, 202



151, 180, 232



227, 176, 202

Rectangle

The Rectangle color scheme consists of four colors that form a rectangle on the color wheel.



209, 217, 149



154, 197, 172



151, 180, 232



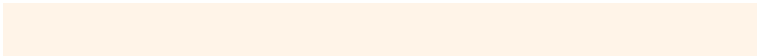
198, 184, 226

Sweetspot

The Sweet Spot groups the original color and five complimentary colors.



209, 217, 149



253, 255, 232



217, 149, 182



126, 128, 113



0, 0, 0



128, 128, 128

Same Dimension

The Same Dimension uses a secret algorithm to generate beautiful new colors.



209, 217, 149



242, 255, 158



149, 217, 150



108, 110, 99



152, 173, 0



42, 46, 0

Inverse Universe

The Inverse Universe completely reimagines the original color for something new.



149, 171, 217



158, 189, 255



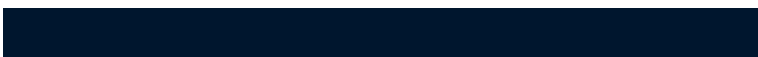
150, 149, 217



99, 102, 110



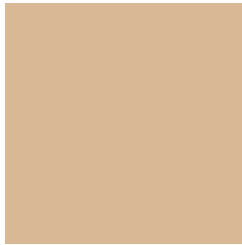
0, 55, 173



0, 15, 46

Previews

White Background



This preview shows how the RYB color 209, 217, 149 looks on a white background.

Color Contrast Check

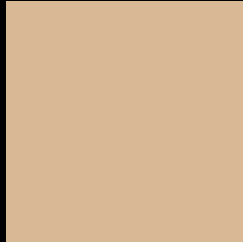
Large Text (above 18pt) WCAG AA × Fail

Any Text WCAG AA × Fail

Large Text (above 18pt) WCAG AAA × Fail

Any Text WCAG AAA × Fail

Black Background



This preview shows how the RYB color 209, 217, 149 looks on a black background.

Color Contrast Check

Large Text (above 18pt) WCAG AA ✓ Pass

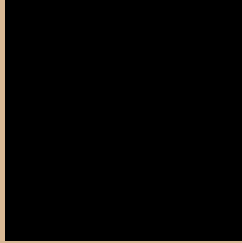
Any Text WCAG AA ✓ Pass

Large Text (above 18pt) WCAG AAA ✓ Pass

Any Text WCAG AAA ✓ Pass

If you want to check with other color combinations, try the [Color Contrast Checker](#).

RYB 209, 217, 149 Background



This preview shows how black text looks on a background with the RYB color 209, 217, 149.



This preview shows how white text looks on a background with the RYB color 209, 217, 149.

Color Blindness Simulation

Color vision deficiency is a very complex topic, and I could not describe the different causes any better than Wikipedia does, so if you want to learn more, you should check out their [article about color blindness](#).


Dichromacy



Original Color
209, 217, 149

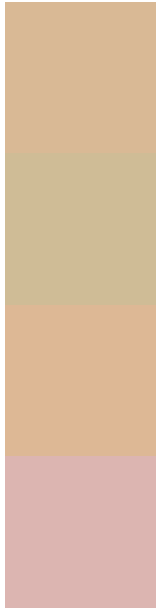
Protanopia
167, 202, 151

Deuteranopia
223, 212, 149



Tritanopia
222, 179, 193

Trichromacy



Original Color

209, 217, 149

Protanomaly

179, 207, 150

Deuteranomaly

221, 217, 149

Tritanomaly

220, 181, 177

Monochromacy



Original Color

209, 217, 149

Achromatopsia

191, 191, 191

Achromatomaly

196, 200, 176

CSS Examples

Text

The CSS property to change the color of the text to RYB 209, 217, 149 is called "color". The color property can be set on classes, ids or directly on the HTML element.

This example shows how text in the color rgb(217, 185, 149) looks like.

```
.text, #text, p{  
    color:rgb(217, 185, 149)  
}
```

If you want to add a text shadow in that color use the text-shadow property, you can generate a text shadow directly with our [CSS Text Shadow Generator](#).

Here you see how black text with a 4 pixel rgb(217, 185, 149) colored shadow looks like.

```
.shadow{ text-shadow: 4px 4px 2px rgb(217, 185, 149) }
```

Border

The CSS property to change the border of an element to RYB 209, 217, 149 is called "border". The border property can be set on classes, ids or directly on the HTML element.

This example shows the color as border, it can be applied via the CSS property "border" or "border-color".

```
.border, #border, table{ border:4px solid rgb(217, 185, 149) }
```

If only the border color should be changed use the property border-color.

```
.border{ border-color:rgb(217, 185, 149) }
```

If you want to add a box shadow in that color use:

Here you see how a box with a 4 pixel rgb(217, 185, 149) colored shadow looks like.

```
.boxshadow{ -moz-box-shadow:4px 4px 4px  
4px rgb(217, 185, 149); -webkit-box-  
shadow:4px 4px 4px 4px rgb(217, 185, 149);  
box-shadow:4px 4px 4px 4px rgb(217, 185,  
149) }
```

Background

The CSS property to change the background color of an element to RGB 209, 217, 149 is called "background". The background property can be set on classes, ids or directly on the HTML element.

```
.background, #background, body{  
background: rgb(217, 185, 149) }
```

If only the background color should be changed can be used:

```
.background{ background-color: rgb(217,  
185, 149) }
```

This example shows the color as background, it is applied via the CSS property "background".

To optimize and compress your CSS code, you can use our [online CSS compressor and optimizer](#) based on csstidy. If you want to create a linear or radial gradient as background or border, check our [CSS Gradient Generator](#).

Hey! You found this booklet interesting? Support Converting Colors with the new Membership Option!

The pro membership hides all ads, plus gives you double the colors in the color bucket, and more awesome pro features!

[Learn more, Memberships starting at \\$2.50/m!](#)

**Follow me
on Twitter!**

@ConvertingColor