

Converting Colors

`RYB(210, 173, 156)`

Have a look what the booklet for
RYB(210, 173, 156) contains.

RYB(210, 173, 156)	3
<i>Conversions</i>	4
<i>Details</i>	6
<i>Harmonies</i>	11
<i>Previews</i>	23
<i>Color Blindness Simulation</i>	26
<i>CSS Examples</i>	29

Color

$\text{RYB}(210, 173, 156)$

Conversions

Conversions Part 1

Format	Color
Hex	D2A99C
RGB	210, 169, 156
RGB Percent	82%, 66%, 61%
CMY	0.1765, 0.3375, 0.3882
CMYK	0.00, 0.20, 0.26, 0.18
HSL	14°, 37%, 72%
HSV	14°, 26%, 82%
XYZ	46.7540, 44.4517, 37.5683
YIQ	179.7770, 28.6090, 4.6490

Conversions

Conversions Part 2

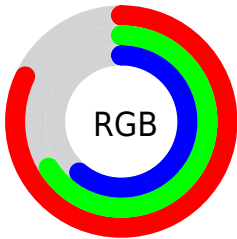
Format	Color
R_{YB}	210, 173, 156
Decimal	13805980
CIE Lab	72.53, 13.10, 12.36
CIE LCh	73, 18.014, 43.327
Yxy	44.4517, 0.3631, 0.3452
Android (android.graphics.Color)	4291996060 (0xFFD2A99C)
YUV	179.7770, -11.7221, 26.5056
Hunter-Lab	66.6721, 8.4974, 13.2618

Details

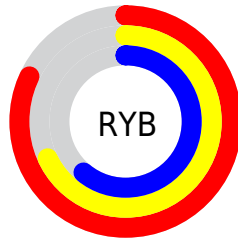
The RYB color **210, 173, 156** is a light color, and the websafe version is hex **CC9999**. A complement of this color would be **156, 179, 210**, and the grayscale version is **180, 180, 180**.

A 20% lighter version of the original color is **255, 230, 210**, and **155, 121, 105** is the 20% darker color. If you saturate the color by 10%, you get **210, 159, 135**, and if you desaturate by 10%, it is **210, 188, 177**.

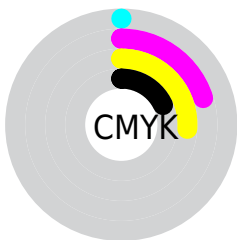
Distribution



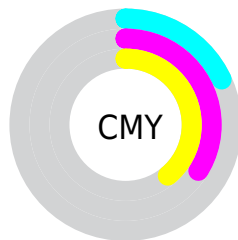
- Red (82%)
- Green (66%)
- Blue (61%)



- Red (82%)
- Yellow (68%)
- Blue (61%)



- Cyan (0%)
- Magenta (20%)
- Yellow (26%)
- Black (18%)




- Cyan (18%)
- Magenta (34%)
- Yellow (39%)

Brightness & Saturation Gradients

These gradients show how the RYB color 210, 173, 156 changes by changing the brightness by 10 percent. The first figure shows a shift by +10% for each color and the second figure -10%.

Similar to the brightness gradients but the following saturation gradients show a change of the RYB color 210, 173, 156 by changing the saturation by 10% instead.

 210, 173, 156

 210, 173, 156

255, 255, 255

 182, 146, 130

 255, 230, 210


 155, 121, 105

 241, 255, 239

 128, 95, 81

 102, 71, 58

 77, 49, 36

 53, 29, 15

 32, 0, 0

 0, 0, 0

 210, 173, 156

 210, 173, 156

■ 210, 159, 135

■ 210, 188, 177

■ 210, 144, 114

■ 210, 202, 198

■ 210, 130, 93

■ 210, 214, 219

■ 210, 115, 72

■ 210, 223, 240

■ 210, 101, 51

■ 210, 231, 255

■ 210, 86, 30

■ 210, 233, 255

■ 210, 72, 9

■ 210, 66, 0

Harmonies

Analogous

The Analogous color harmony consists of three colors that are next to each other on the color wheel.



212, 167, 171



210, 173, 156



195, 199, 147

Triad

The Triadic color harmony groups three colors that are evenly spaced from another and form a triangle on the color wheel.



210, 173, 156



147, 173, 187



169, 176, 210

Complementary

The Complementary color scheme is a pair of colors which are on the opposite of each other on the color wheel.



210, 173, 156



156, 179, 210

Split Complementary

Split-complementary colors differ from the complementary color scheme. The scheme consists of three colors, the original color and two neighbors of the complement color.



148, 170, 209



210, 173, 156



135, 162, 188

Square

The Square scheme is like the rectangle color scheme, but the four colors are evenly spaced on the color wheel.



210, 173, 156



154, 184, 174



136, 164, 200



190, 171, 202

Rectangle

The Rectangle color scheme consists of four colors that form a rectangle on the color wheel.



210, 173, 156



162, 189, 145



136, 164, 200



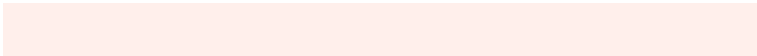
162, 175, 210

Sweetspot

The Sweet Spot groups the original color and five complimentary colors.



210, 173, 156



255, 240, 235



210, 156, 197



128, 119, 115



0, 0, 0



128, 128, 128

Same Dimension

The Same Dimension uses a secret algorithm to generate beautiful new colors.



210, 173, 156



255, 201, 176



175, 210, 156



105, 98, 94



168, 53, 0



41, 13, 0

Inverse Universe

The Inverse Universe completely reimagines the original color for something new.



156, 179, 210



176, 210, 255



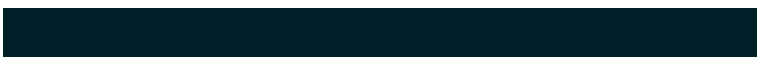
156, 167, 210



94, 99, 105



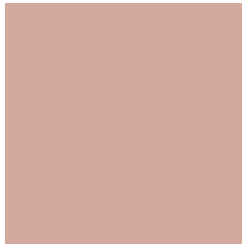
0, 73, 168



0, 18, 41

Previews

White Background



This preview shows how the RYB color 210, 173, 156 looks on a white background.

Color Contrast Check

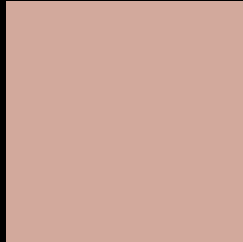
Large Text (above 18pt) WCAG AA × Fail

Any Text WCAG AA × Fail

Large Text (above 18pt) WCAG AAA × Fail

Any Text WCAG AAA × Fail

Black Background



This preview shows how the RYB color 210, 173, 156 looks on a black background.

Color Contrast Check

Large Text (above 18pt) WCAG AA ✓ Pass

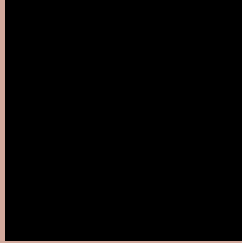
Any Text WCAG AA ✓ Pass

Large Text (above 18pt) WCAG AAA ✓ Pass

Any Text WCAG AAA ✓ Pass

If you want to check with other color combinations, try the [Color Contrast Checker](#).

R_YB 210, 173, 156 Background



This preview shows how black text looks on a background with the R_YB color 210, 173, 156.



This preview shows how white text looks on a background with the R_YB color 210, 173, 156.

Color Blindness Simulation

Color vision deficiency is a very complex topic, and I could not describe the different causes any better than Wikipedia does, so if you want to learn more, you should check out their [article about color blindness](#).

Dichromacy



Original Color
210, 173, 156

Protanopia
170, 185, 160

Deuteranopia
203, 181, 155



Tritanopia
213, 166, 178

Trichromacy



Original Color

210, 173, 156

Protanomaly

194, 188, 159

Deuteranomaly

206, 178, 155

Tritanomaly

212, 167, 170

Monochromacy



Original Color

210, 173, 156

Achromatopsia

180, 180, 180

Achromatomaly

191, 178, 171

CSS Examples

Text

The CSS property to change the color of the text to RYB 210, 173, 156 is called "color". The color property can be set on classes, ids or directly on the HTML element.

This example shows how text in the color rgb(210, 169, 156) looks like.

```
.text, #text, p{  
    color:rgb(210, 169, 156)  
}
```

If you want to add a text shadow in that color use the text-shadow property, you can generate a text shadow directly with our [CSS Text Shadow Generator](#).

Here you see how black text with a 4 pixel rgb(210, 169, 156) colored shadow looks like.

```
.shadow{ text-shadow: 4px 4px 2px rgb(210, 169, 156) }
```

Border

The CSS property to change the border of an element to RYB 210, 173, 156 is called "border". The border property can be set on classes, ids or directly on the HTML element.

This example shows the color as border, it can be applied via the CSS property "border" or "border-color".

```
.border, #border, table{ border:4px solid rgb(210, 169, 156) }
```

If only the border color should be changed use the property `border-color`.

```
.border{ border-color:rgb(210, 169, 156) }
```

If you want to add a box shadow in that color use:

Here you see how a box with a 4 pixel `rgb(210, 169, 156)` colored shadow looks like.

```
.boxshadow{ -moz-box-shadow:4px 4px 4px  
4px rgb(210, 169, 156); -webkit-box-  
shadow:4px 4px 4px 4px rgb(210, 169, 156);  
box-shadow:4px 4px 4px 4px rgb(210, 169,  
156) }
```

Background

The CSS property to change the background color of an element to RYB 210, 173, 156 is called "background". The background property can be set on classes, ids or directly on the HTML element.

```
.background, #background, body{  
background: rgb(210, 169, 156) }
```

If only the background color should be changed can be used:

```
.background{ background-color: rgb(210,  
169, 156) }
```

This example shows the color as background, it is applied via the CSS property "background".

To optimize and compress your CSS code, you can use our [online CSS compressor and optimizer](#) based on csstidy. If you want to create a linear or radial gradient as background or border, check our [CSS Gradient Generator](#).

Hey! You found this booklet interesting? Support Converting Colors with the new Membership Option!

The pro membership hides all ads, plus gives you double the colors in the color bucket, and more awesome pro features!

[Learn more, Memberships starting at \\$2.50/m!](#)

**Follow me
on Twitter!**

@ConvertingColor