

Converting Colors

`RYB(210, 180, 164)`

Have a look what the booklet for
RYB(210, 180, 164) contains.

RYB(210, 180, 164)	3
<i>Conversions</i>	4
<i>Details</i>	6
<i>Harmonies</i>	11
<i>Previews</i>	23
<i>Color Blindness Simulation</i>	26
<i>CSS Examples</i>	29

Color

$\text{RYB}(210, 180, 164)$

Conversions

Conversions Part 1

Format	Color
Hex	D2B0A4
RGB	210, 176, 164
RGB Percent	82%, 69%, 64%
CMY	0.1765, 0.3103, 0.3569
CMYK	0.00, 0.16, 0.22, 0.18
HSL	15°, 34%, 73%
HSV	15°, 22%, 82%
XYZ	48.7792, 47.3821, 41.6967
YIQ	184.7980, 24.1160, 3.4760

Conversions

Conversions Part 2

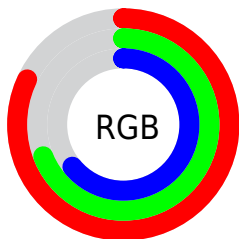
Format	Color
R _Y B	210, 180, 164
Decimal	13807780
CIE Lab	74.43, 10.52, 10.68
CIE LCh	74, 14.990, 45.452
Yxy	47.3821, 0.3538, 0.3437
Android (android.graphics.Color)	4291997860 (0xFFD2B0A4)
YUV	184.7980, -10.2534, 22.1022
Hunter-Lab	68.8346, 6.0323, 12.2692

Details

The RYB color **210, 180, 164** is a light color, and the websafe version is hex **CC9999**. A complement of this color would be **164, 184, 210**, and the grayscale version is **185, 185, 185**.

A 20% lighter version of the original color is **255, 239, 219**, and **155, 127, 112** is the 20% darker color. If you saturate the color by 10%, you get **210, 166, 143**, and if you desaturate by 10%, it is **210, 193, 185**.

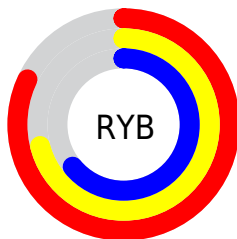
Distribution



Red (82%)

Green (69%)

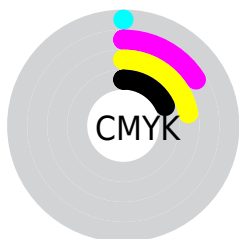
Blue (64%)



Red (82%)

Yellow (71%)

Blue (64%)

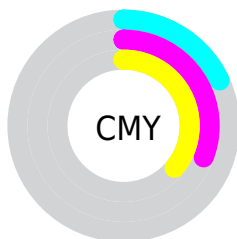


Cyan (0%)

Magenta (16%)

Yellow (22%)

Black (18%)



Cyan (18%)


Magenta (31%)

Yellow (36%)

Brightness & Saturation Gradients

These gradients show how the RYB color 210, 180, 164 changes by changing the brightness by 10 percent. The first figure shows a shift by +10% for each color and the second figure -10%.

Similar to the brightness gradients but the following saturation gradients show a change of the RYB color 210, 180, 164 by changing the saturation by 10% instead.

 210, 180, 164

 210, 180, 164

255, 255, 255

 182, 153, 138

 255, 237, 219

 155, 127, 112

 247, 255, 247

 128, 101, 88

 103, 79, 65

 78, 56, 42

 54, 33, 22

 34, 9, 0

 0, 0, 0

 210, 180, 164

 210, 180, 164

■ 210, 166, 143

■ 210, 193, 185

■ 210, 153, 122

■ 210, 207, 206

■ 210, 139, 101

■ 210, 217, 227

■ 210, 126, 80

■ 210, 226, 248

■ 210, 112, 59

■ 210, 232, 255

■ 210, 97, 38

■ 210, 233, 255

■ 210, 84, 17

■ 210, 73, 0

Harmonies

Analogous

The Analogous color harmony consists of three colors that are next to each other on the color wheel.



212, 174, 176



210, 180, 164



197, 201, 157

Triad

The Triadic color harmony groups three colors that are evenly spaced from another and form a triangle on the color wheel.



210, 180, 164



157, 179, 191



177, 181, 209

Complementary

The Complementary color scheme is a pair of colors which are on the opposite of each other on the color wheel.



210, 180, 164



164, 184, 210

Split Complementary

Split-complementary colors differ from the complementary color scheme. The scheme consists of three colors, the original color and two neighbors of the complement color.



160, 177, 209



210, 180, 164



148, 170, 191

Square

The Square scheme is like the rectangle color scheme, but the four colors are evenly spaced on the color wheel.



210, 180, 164



163, 188, 180



149, 172, 202



194, 177, 202

Rectangle

The Rectangle color scheme consists of four colors that form a rectangle on the color wheel.



210, 180, 164



168, 192, 156



149, 172, 202



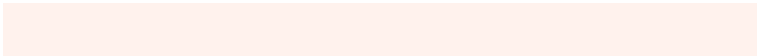
171, 180, 210

Sweetspot

The Sweet Spot groups the original color and five complimentary colors.



210, 180, 164



255, 244, 237



210, 164, 198



128, 121, 117



0, 0, 0



128, 128, 128

Same Dimension

The Same Dimension uses a secret algorithm to generate beautiful new colors.



210, 180, 164



255, 212, 189



180, 210, 164



105, 98, 94



168, 58, 0



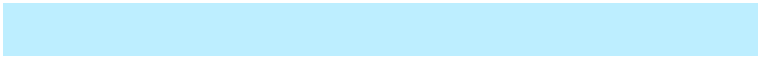
41, 15, 0

Inverse Universe

The Inverse Universe completely reimagines the original color for something new.



164, 184, 210



189, 217, 255



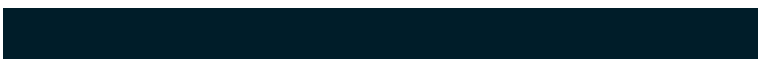
164, 174, 210



94, 99, 105



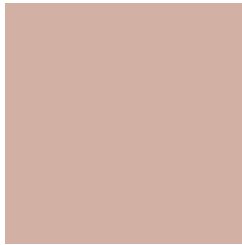
0, 72, 168



0, 17, 41

Previews

White Background



This preview shows how the RYB color 210, 180, 164 looks on a white background.

Color Contrast Check

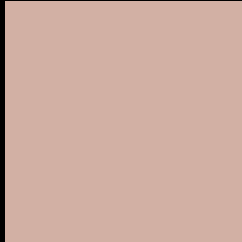
Large Text (above 18pt) WCAG AA × Fail

Any Text WCAG AA × Fail

Large Text (above 18pt) WCAG AAA × Fail

Any Text WCAG AAA × Fail

Black Background



This preview shows how the RYB color 210, 180, 164 looks on a black background.

Color Contrast Check

Large Text (above 18pt) WCAG AA ✓ Pass

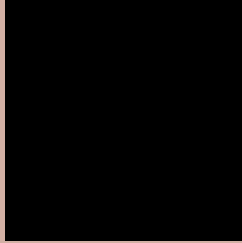
Any Text WCAG AA ✓ Pass

Large Text (above 18pt) WCAG AAA ✓ Pass

Any Text WCAG AAA ✓ Pass

If you want to check with other color combinations, try the [Color Contrast Checker](#).

RYB 210, 180, 164 Background



This preview shows how black text looks on a background with the RYB color 210, 180, 164.






This preview shows how white text looks on a background with the RYB color 210, 180, 164.

Color Blindness Simulation

Color vision deficiency is a very complex topic, and I could not describe the different causes any better than Wikipedia does, so if you want to learn more, you should check out their [article about color blindness](#).

Dichromacy

	Original Color 210, 180, 164
	Protanopia 178, 190, 168
	Deuteranopia 208, 182, 164



Tritanopia
213, 173, 186

Trichromacy



Original Color

210, 180, 164

Protanomaly

197, 190, 167

Deuteranomaly

209, 182, 164

Tritanomaly

212, 174, 178

Monochromacy



Original Color

210, 180, 164

Achromatopsia

185, 185, 185

Achromatomaly

194, 184, 177

CSS Examples

Text

The CSS property to change the color of the text to RYB 210, 180, 164 is called "color". The color property can be set on classes, ids or directly on the HTML element.

This example shows how text in the color `rgb(210, 176, 164)` looks like.

```
.text, #text, p{  
    color:rgb(210, 176, 164)  
}
```

If you want to add a text shadow in that color use the text-shadow property, you can generate a text shadow directly with our [CSS Text Shadow Generator](#).

Here you see how black text with a 4 pixel rgb(210, 176, 164) colored shadow looks like.

```
.shadow{ text-shadow: 4px 4px 2px rgb(210, 176, 164) }
```

Border

The CSS property to change the border of an element to RYB 210, 180, 164 is called "border". The border property can be set on classes, ids or directly on the HTML element.

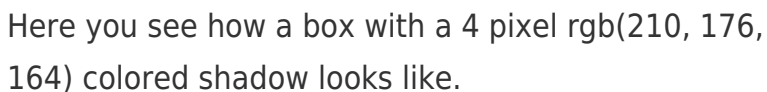
This example shows the color as border, it can be applied via the CSS property "border" or "border-color".

```
.border, #border, table{ border:4px solid rgb(210, 176, 164) }
```

If only the border color should be changed use the property `border-color`.

```
.border{ border-color:rgb(210, 176, 164) }
```

If you want to add a box shadow in that color use:



Here you see how a box with a 4 pixel `rgb(210, 176, 164)` colored shadow looks like.

```
.boxshadow{ -moz-box-shadow:4px 4px 4px 4px rgb(210, 176, 164); -webkit-box-shadow:4px 4px 4px 4px rgb(210, 176, 164); box-shadow:4px 4px 4px 4px rgb(210, 176, 164) }
```

Background

The CSS property to change the background color of an element to RYB 210, 180, 164 is called "background". The background property can be set on classes, ids or directly on the HTML element.

```
.background, #background, body{  
background: rgb(210, 176, 164) }
```

If only the background color should be changed can be used:

```
.background{ background-color: rgb(210,  
176, 164) }
```

This example shows the color as background, it is applied via the CSS property "background".

To optimize and compress your CSS code, you can use our [online CSS compressor and optimizer](#) based on csstidy. If you want to create a linear or radial gradient as background or border, check our [CSS Gradient Generator](#).

Hey! You found this booklet interesting? Support Converting Colors with the new Membership Option!

The pro membership hides all ads, plus gives you double the colors in the color bucket, and more awesome pro features!

[Learn more, Memberships starting at \\$2.50/m!](#)

**Follow me
on Twitter!**

@ConvertingColor