

Converting Colors

`RYB(211, 165, 153)`

Have a look what the booklet for
RYB(211, 165, 153) contains.

RYB(211, 165, 153)	3
<i>Conversions</i>	4
<i>Details</i>	6
<i>Harmonies</i>	11
<i>Previews</i>	23
<i>Color Blindness Simulation</i>	26
<i>CSS Examples</i>	29

Color

R_YB(211, 165, 153)

Conversions

Conversions Part 1

Format	Color
Hex	D3A399
RGB	211, 163, 153
RGB Percent	83%, 64%, 60%
CMY	0.1725, 0.3610, 0.4000
CMYK	0.00, 0.23, 0.27, 0.17
HSL	10°, 40%, 71%
HSV	10°, 27%, 83%
XYZ	45.7008, 42.3229, 35.8974
YIQ	176.2120, 31.8180, 7.0660

Conversions

Conversions Part 2

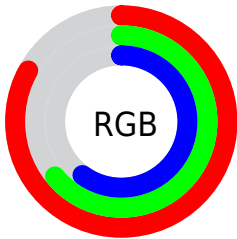
Format	Color
RYB	211, 165, 153
Decimal	13869977
CIELab	71.09, 16.31, 12.00
CIELCh	71, 20.246, 36.334
Yxy	42.3229, 0.3688, 0.3415
Android (android.graphics.Color)	4292060057 (0xFFD3A399)
YUV	176.2120, -11.4435, 30.5091
Hunter-Lab	65.0560, 11.5452, 12.8235

Details

The RYB color **211, 165, 153** is a light color, and the websafe version is hex **CC9999**. A complement of this color would be **153, 179, 211**, and the grayscale version is **176, 176, 176**.

A 20% lighter version of the original color is **255, 221, 207**, and **155, 113, 102** is the 20% darker color. If you saturate the color by 10%, you get **211, 148, 132**, and if you desaturate by 10%, it is **211, 181, 174**.

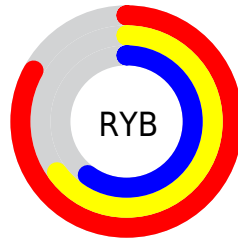
Distribution



Red (83%)

Green (64%)

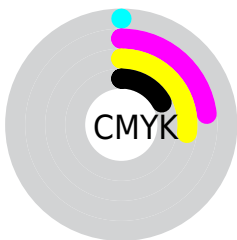
Blue (60%)



Red (83%)

Yellow (65%)

Blue (60%)

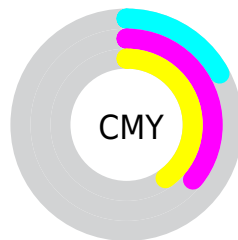


Cyan (0%)

Magenta (23%)

Yellow (27%)

Black (17%)



Cyan (17%)

Magenta (36%)

Yellow (40%)

Brightness & Saturation Gradients

These gradients show how the RYB color 211, 165, 153 changes by changing the brightness by 10 percent. The first figure shows a shift by +10% for each color and the second figure -10%.

Similar to the brightness gradients but the following saturation gradients show a change of the RYB color 211, 165, 153 by changing the saturation by 10% instead.


 211, 165, 153

 211, 165, 153

255, 255, 255

 183, 139, 127

 255, 221, 207

 155, 113, 102

 250, 255, 236

 129, 89, 78

 103, 65, 55

 77, 42, 34

 53, 20, 12

 32, 0, 0

 0, 0, 0

 211, 165, 153

 211, 165, 153

■ 211, 148, 132

■ 211, 181, 174

■ 211, 131, 111

■ 211, 199, 195

■ 211, 114, 90

■ 211, 213, 216

■ 211, 98, 69

■ 211, 223, 237

■ 211, 82, 47

■ 211, 232, 255

■ 211, 65, 26

■ 211, 233, 255

■ 211, 49, 5

■ 211, 43, 0

Harmonies

Analogous

The Analogous color harmony consists of three colors that are next to each other on the color wheel.



211, 161, 171



211, 165, 153



201, 190, 141

Triad

The Triadic color harmony groups three colors that are evenly spaced from another and form a triangle on the color wheel.



211, 165, 153



143, 172, 183



158, 170, 210

Complementary

The Complementary color scheme is a pair of colors which are on the opposite of each other on the color wheel.



211, 165, 153



153, 179, 211

Split Complementary

Split-complementary colors differ from the complementary color scheme. The scheme consists of three colors, the original color and two neighbors of the complement color.



136, 163, 207



211, 165, 153



128, 159, 185

Square

The Square scheme is like the rectangle color scheme, but the four colors are evenly spaced on the color wheel.



211, 165, 153



144, 180, 160



124, 157, 195



182, 168, 204

Rectangle

The Rectangle color scheme consists of four colors that form a rectangle on the color wheel.



211, 165, 153



164, 190, 137



124, 157, 195



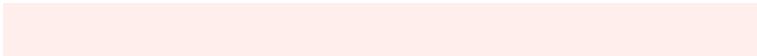
150, 168, 210

Sweetspot

The Sweet Spot groups the original color and five complimentary colors.



211, 165, 153



255, 239, 235



211, 153, 201



128, 117, 115



0, 0, 0



128, 128, 128

Same Dimension

The Same Dimension uses a secret algorithm to generate beautiful new colors.



211, 165, 153



255, 188, 171



181, 211, 153



105, 96, 94



168, 35, 0



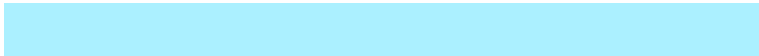
41, 8, 0

Inverse Universe

The Inverse Universe completely reimagines the original color for something new.



153, 179, 211



171, 209, 255



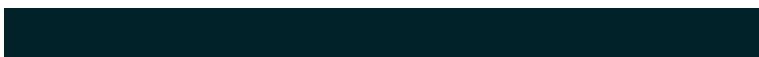
153, 167, 211



94, 99, 105



0, 76, 168



0, 19, 41

Previews

White Background



This preview shows how the RYB color 211, 165, 153 looks on a white background.

Color Contrast Check

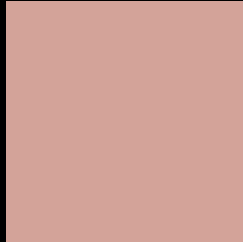
Large Text (above 18pt) WCAG AA × Fail

Any Text WCAG AA × Fail

Large Text (above 18pt) WCAG AAA × Fail

Any Text WCAG AAA × Fail

Black Background



This preview shows how the RYB color 211, 165, 153 looks on a black background.

Color Contrast Check

Large Text (above 18pt) WCAG AA ✓ Pass

Any Text WCAG AA ✓ Pass

Large Text (above 18pt) WCAG AAA ✓ Pass

Any Text WCAG AAA ✓ Pass

If you want to check with other color combinations, try the [Color Contrast Checker](#).

RYB 211, 165, 153 Background



This preview shows how black text looks on a background with the RYB color 211, 165, 153.



This preview shows how white text looks on a background with the RYB color 211, 165, 153.

Color Blindness Simulation

Color vision deficiency is a very complex topic, and I could not describe the different causes any better than Wikipedia does, so if you want to learn more, you should check out their [article about color blindness](#).


Dichromacy



Original Color
211, 165, 153

Protanopia
169, 181, 159

Deuteranopia
199, 176, 152



Tritanopia
213, 160, 172

Trichromacy



Original Color
211, 165, 153

Protanomaly
192, 178, 157

Deuteranomaly
203, 171, 152

Tritanomaly
212, 161, 165

Monochromacy



Original Color
211, 165, 153

Achromatopsia
176, 176, 176

Achromatomaly
189, 172, 168

CSS Examples

Text

The CSS property to change the color of the text to RYB 211, 165, 153 is called "color". The color property can be set on classes, ids or directly on the HTML element.

This example shows how text in the color `rgb(211, 163, 153)` looks like.

```
.text, #text, p{  
    color:rgb(211, 163, 153)  
}
```

If you want to add a text shadow in that color use the text-shadow property, you can generate a text shadow directly with our [CSS Text Shadow Generator](#).

Here you see how black text with a 4 pixel rgb(211, 163, 153) colored shadow looks like.

```
.shadow{ text-shadow: 4px 4px 2px rgb(211, 163, 153) }
```

Border

The CSS property to change the border of an element to RYB 211, 165, 153 is called "border". The border property can be set on classes, ids or directly on the HTML element.

This example shows the color as border, it can be applied via the CSS property "border" or "border-color".

```
.border, #border, table{ border:4px solid rgb(211, 163, 153) }
```

If only the border color should be changed use the property `border-color`.

```
.border{ border-color:rgb(211, 163, 153) }
```

If you want to add a box shadow in that color use:

Here you see how a box with a 4 pixel `rgb(211, 163, 153)` colored shadow looks like.

```
.boxshadow{ -moz-box-shadow:4px 4px 4px  
4px rgb(211, 163, 153); -webkit-box-  
shadow:4px 4px 4px 4px rgb(211, 163, 153);  
box-shadow:4px 4px 4px 4px rgb(211, 163,  
153) }
```

Background

The CSS property to change the background color of an element to RGB 211, 163, 153 is called "background". The background property can be set on classes, ids or directly on the HTML element.

```
.background, #background, body{  
background: rgb(211, 163, 153) }
```

If only the background color should be changed can be used:

```
.background{ background-color: rgb(211,  
163, 153) }
```

This example shows the color as background, it is applied via the CSS property "background".

To optimize and compress your CSS code, you can use our [online CSS compressor and optimizer](#) based on csstidy. If you want to create a linear or radial gradient as background or border, check our [CSS Gradient Generator](#).

Hey! You found this booklet interesting? Support Converting Colors with the new Membership Option!

The pro membership hides all ads, plus gives you double the colors in the color bucket, and more awesome pro features!

[Learn more, Memberships starting at \\$2.50/m!](#)

**Follow me
on Twitter!**

@ConvertingColor