

Converting Colors

`RYB(211, 180, 187)`

Have a look what the booklet for
RYB(211, 180, 187) contains.

RYB(211, 180, 187)	3
<i>Conversions</i>	4
<i>Details</i>	6
<i>Harmonies</i>	11
<i>Previews</i>	23
<i>Color Blindness Simulation</i>	26
<i>CSS Examples</i>	29

Color

$\text{RYB}(211, 180, 187)$

Conversions

Conversions Part 1

Format	Color
Hex	D3B4BB
RGB	211, 180, 187
RGB Percent	83%, 71%, 73%
CMY	0.1725, 0.2941, 0.2667
CMYK	0.00, 0.15, 0.11, 0.17
HSL	346°, 26%, 77%
HSV	346°, 15%, 83%
XYZ	52.1549, 50.0793, 53.9311
YIQ	190.0670, 16.2290, 8.7490

Conversions

Conversions Part 2

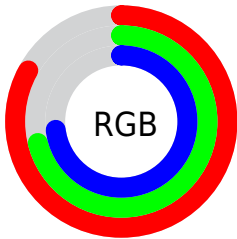
Format	Color
R _Y B	211, 180, 187
Decimal	13874363
CIE Lab	76.12, 12.28, 0.58
CIE LCh	76, 12.298, 2.710
Yxy	50.0793, 0.3340, 0.3207
Android (android.graphics.Color)	4292064443 (0xFFD3B4BB)
YUV	190.0670, -1.5120, 18.3582
Hunter-Lab	70.7667, 7.7123, 4.3519

Details

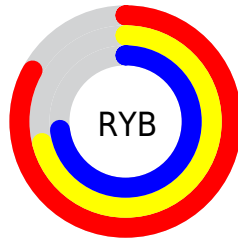
The RYB color **211, 180, 187** is a light color, and the websafe version is hex **CC9999**. A complement of this color would be **180, 197, 211**, and the grayscale version is **190, 190, 190**.

A 20% lighter version of the original color is **255, 236, 243**, and **156, 127, 134** is the 20% darker color. If you saturate the color by 10%, you get **211, 159, 171**, and if you desaturate by 10%, it is **211, 201, 203**.

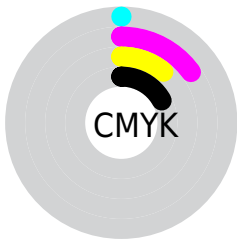
Distribution



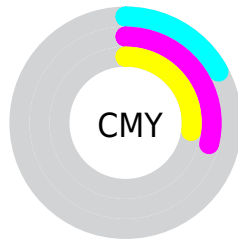
- Red (83%)
- Green (71%)
- Blue (73%)



- Red (83%)
- Yellow (71%)
- Blue (73%)



- Cyan (0%)
- Magenta (15%)
- Yellow (11%)
- Black (17%)



- Cyan (17%)
- Magenta (29%)
- Yellow (27%)

Brightness & Saturation Gradients

These gradients show how the RYB color 211, 180, 187 changes by changing the brightness by 10 percent. The first figure shows a shift by +10% for each color and the second figure -10%.

Similar to the brightness gradients but the following saturation gradients show a change of the RYB color 211, 180, 187 by changing the saturation by 10% instead.

 211, 180, 187

255, 255, 255

 255, 236, 243

 211, 180, 187

 183, 153, 160

 156, 127, 134

 130, 102, 109


 105, 78, 84

 80, 55, 61

 57, 33, 40

 35, 12, 19

 0, 0, 0

 211, 180, 187

 211, 180, 187

■ 211, 159, 171

■ 211, 201, 203

■ 211, 138, 154

■ 211, 217, 222

■ 211, 117, 138

■ 211, 229, 243

■ 211, 96, 122

■ 211, 234, 255

■ 211, 75, 105

■ 211, 233, 255

■ 211, 53, 89

■ 211, 32, 73

■ 211, 11, 56

■ 211, 0, 48

Harmonies

Analogous

The Analogous color harmony consists of three colors that are next to each other on the color wheel.



204, 181, 198



211, 180, 187



212, 182, 176

Triad

The Triadic color harmony groups three colors that are evenly spaced from another and form a triangle on the color wheel.



211, 180, 187



168, 191, 176



165, 181, 207

Complementary

The Complementary color scheme is a pair of colors which are on the opposite of each other on the color wheel.



211, 180, 187



180, 197, 211

Split Complementary

Split-complementary colors differ from the complementary color scheme. The scheme consists of three colors, the original color and two neighbors of the complement color.



159, 178, 199



211, 180, 187



171, 188, 193

Square

The Square scheme is like the rectangle color scheme, but the four colors are evenly spaced on the color wheel.



211, 180, 187



178, 196, 165



162, 180, 194



177, 185, 210

Rectangle

The Rectangle color scheme consists of four colors that form a rectangle on the color wheel.



211, 180, 187



209, 187, 170



162, 180, 194



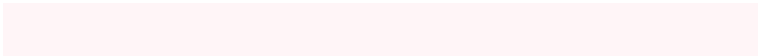
162, 180, 205

Sweetspot

The Sweet Spot groups the original color and five complimentary colors.



211, 180, 187



255, 245, 247



204, 180, 211



128, 121, 123



0, 0, 0



128, 128, 128

Same Dimension

The Same Dimension uses a secret algorithm to generate beautiful new colors.



211, 180, 187



255, 209, 219



211, 191, 180



105, 94, 96



168, 0, 38



41, 0, 9

Inverse Universe

The Inverse Universe completely reimagines the original color for something new.



211, 180, 187



255, 209, 219



180, 193, 211



105, 94, 96



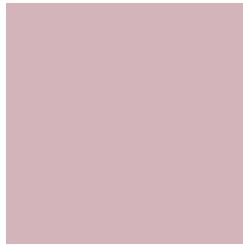
168, 0, 38



41, 0, 9

Previews

White Background



This preview shows how the RYB color 211, 180, 187 looks on a white background.

Color Contrast Check

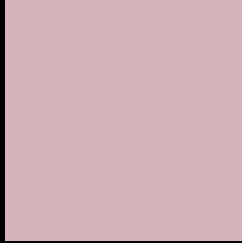
Large Text (above 18pt) WCAG AA × Fail

Any Text WCAG AA × Fail

Large Text (above 18pt) WCAG AAA × Fail

Any Text WCAG AAA × Fail

Black Background



This preview shows how the RYB color 211, 180, 187 looks on a black background.

Color Contrast Check

Large Text (above 18pt) WCAG AA ✓ Pass

Any Text WCAG AA ✓ Pass

Large Text (above 18pt) WCAG AAA ✓ Pass

Any Text WCAG AAA ✓ Pass

If you want to check with other color combinations, try the [Color Contrast Checker](#).

R Y B 211, 180, 187 Background



This preview shows how black text looks on a background with the RYB color 211, 180, 187.



This preview shows how white text looks on a background with the RYB color 211, 180, 187.

Color Blindness Simulation

Color vision deficiency is a very complex topic, and I could not describe the different causes any better than Wikipedia does, so if you want to learn more, you should check out their [article about color blindness](#).


Dichromacy



Original Color
211, 180, 187

Protanopia
190, 187, 191

Deuteranopia
206, 182, 187



Tritanopia
212, 179, 193

Trichromacy



Original Color

211, 180, 187

Protanomaly

198, 184, 190

Deuteranomaly

208, 181, 187

Tritanomaly

212, 179, 191

Monochromacy



Original Color

211, 180, 187

Achromatopsia

190, 190, 190

Achromatomaly

198, 186, 189

CSS Examples

Text

The CSS property to change the color of the text to RYB 211, 180, 187 is called "color". The color property can be set on classes, ids or directly on the HTML element.

This example shows how text in the color rgb(211, 180, 187) looks like.

```
.text, #text, p{  
    color:rgb(211, 180, 187)  
}
```

If you want to add a text shadow in that color use the text-shadow property, you can generate a text shadow directly with our [CSS Text Shadow Generator](#).

Here you see how black text with a 4 pixel rgb(211, 180, 187) colored shadow looks like.

```
.shadow{ text-shadow: 4px 4px 2px rgb(211, 180, 187) }
```

Border

The CSS property to change the border of an element to RYB 211, 180, 187 is called "border". The border property can be set on classes, ids or directly on the HTML element.

This example shows the color as border, it can be applied via the CSS property "border" or "border-color".

```
.border, #border, table{ border:4px solid rgb(211, 180, 187) }
```

If only the border color should be changed use the property `border-color`.

```
.border{ border-color:rgb(211, 180, 187) }
```

If you want to add a box shadow in that color use:

Here you see how a box with a 4 pixel `rgb(211, 180, 187)` colored shadow looks like.

```
.boxshadow{ -moz-box-shadow:4px 4px 4px 4px rgb(211, 180, 187); -webkit-box-shadow:4px 4px 4px 4px rgb(211, 180, 187); box-shadow:4px 4px 4px 4px rgb(211, 180, 187) }
```

Background

The CSS property to change the background color of an element to RGB 211, 180, 187 is called "background". The background property can be set on classes, ids or directly on the HTML element.

```
.background, #background, body{  
background: rgb(211, 180, 187) }
```

If only the background color should be changed can be used:

```
.background{ background-color: rgb(211,  
180, 187) }
```

This example shows the color as background, it is applied via the CSS property "background".

To optimize and compress your CSS code, you can use our [online CSS compressor and optimizer](#) based on csstidy. If you want to create a linear or radial gradient as background or border, check our [CSS Gradient Generator](#).

Hey! You found this booklet interesting? Support Converting Colors with the new Membership Option!

The pro membership hides all ads, plus gives you double the colors in the color bucket, and more awesome pro features!

[Learn more, Memberships starting at \\$2.50/m!](#)

**Follow me
on Twitter!**

@ConvertingColor