

Converting Colors

`RYB(211, 190, 188)`

Have a look what the booklet for
RYB(211, 190, 188) contains.

RYB(211, 190, 188)	3
<i>Conversions</i>	4
<i>Details</i>	6
<i>Harmonies</i>	11
<i>Previews</i>	23
<i>Color Blindness Simulation</i>	26
<i>CSS Examples</i>	29

Color

R_YB(211, 190, 188)

Conversions

Conversions Part 1

Format	Color
Hex	D3BEBC
RGB	211, 190, 188
RGB Percent	83%, 75%, 74%
CMY	0.1725, 0.2555, 0.2627
CMYK	0.00, 0.10, 0.11, 0.17
HSL	5°, 21%, 78%
HSV	5°, 11%, 83%
XYZ	54.3199, 54.2374, 55.1828
YIQ	196.0510, 13.1580, 3.8300

Conversions

Conversions Part 2

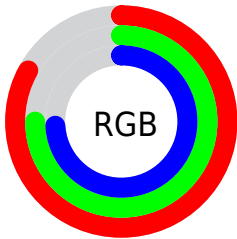
Format	Color
R _Y B	211, 190, 188
Decimal	13876924
CIE Lab	78.60, 7.17, 3.65
CIE LCh	79, 8.047, 26.942
Yxy	54.2374, 0.3317, 0.3312
Android (android.graphics.Color)	4292067004 (0xFFD3BEB3)
YUV	196.0510, -3.9691, 13.1103
Hunter-Lab	73.6460, 2.7776, 7.1263

Details

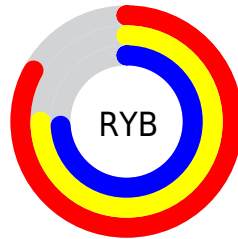
The RYB color **211, 190, 188** is a light color, and the websafe version is hex **CCCCCC**. A complement of this color would be **188, 199, 211**, and the grayscale version is **196, 196, 196**.

A 20% lighter version of the original color is **255, 246, 244**, and **156, 137, 135** is the 20% darker color. If you saturate the color by 10%, you get **211, 170, 167**, and if you desaturate by 10%, it is **211, 209, 209**.

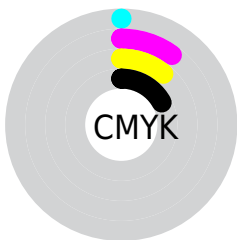
Distribution



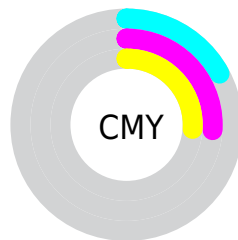
- Red (83%)
- Green (75%)
- Blue (74%)



- Red (83%)
- Yellow (75%)
- Blue (74%)



- Cyan (0%)
- Magenta (10%)
- Yellow (11%)
- Black (17%)





- Cyan (17%)
- Magenta (26%)
- Yellow (26%)

Brightness & Saturation Gradients


These gradients show how the RYB color 211, 190, 188 changes by changing the brightness by 10 percent. The first figure shows a shift by +10% for each color and the second figure -10%.

Similar to the brightness gradients but the following saturation gradients show a change of the RYB color 211, 190, 188 by changing the saturation by 10% instead.


 211, 190, 188


 211, 190, 188

255, 255, 255


 183, 163, 161

 255, 246, 244

 156, 137, 135

 130, 111, 110

 105, 87, 85

 81, 63, 62

 57, 41, 40

 35, 21, 20

 3, 0, 0

 0, 0, 0

■ 211, 190, 188

■ 211, 190, 188

■ 211, 170, 167

■ 211, 209, 209

■ 211, 151, 146

■ 211, 220, 230

■ 211, 133, 125

■ 211, 230, 251

■ 211, 113, 104

■ 211, 233, 255

■ 211, 94, 83

■ 211, 74, 61

■ 211, 55, 40

■ 211, 36, 19

■ 211, 18, 0

Harmonies

Analogous

The Analogous color harmony consists of three colors that are next to each other on the color wheel.



209, 190, 196



211, 190, 188



208, 196, 182

Triad

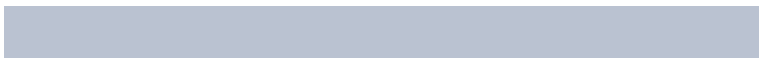
The Triadic color harmony groups three colors that are evenly spaced from another and form a triangle on the color wheel.



211, 190, 188



185, 197, 198



186, 192, 209

Complementary

The Complementary color scheme is a pair of colors which are on the opposite of each other on the color wheel.



211, 190, 188



188, 199, 211

Split Complementary

Split-complementary colors differ from the complementary color scheme. The scheme consists of three colors, the original color and two neighbors of the complement color.



179, 190, 207



211, 190, 188



178, 190, 199

Square

The Square scheme is like the rectangle color scheme, but the four colors are evenly spaced on the color wheel.



211, 190, 188



181, 196, 184



176, 188, 201



195, 193, 208

Rectangle

The Rectangle color scheme consists of four colors that form a rectangle on the color wheel.



211, 190, 188



200, 204, 180



176, 188, 201



183, 192, 209

Sweetspot

The Sweet Spot groups the original color and five complimentary colors.



211, 190, 188



255, 248, 247



211, 188, 209



128, 123, 122



0, 0, 0



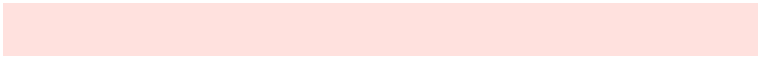
128, 128, 128

Same Dimension

The Same Dimension uses a secret algorithm to generate beautiful new colors.



211, 190, 188



255, 225, 222



206, 211, 188



105, 95, 94



168, 14, 0



41, 3, 0

Inverse Universe

The Inverse Universe completely reimagines the original color for something new.



188, 199, 211



222, 238, 255



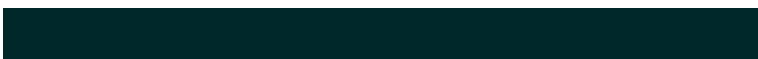
188, 195, 211



94, 99, 105



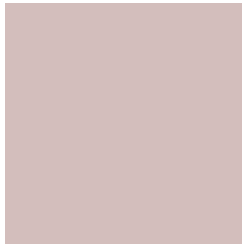
0, 81, 168



0, 20, 41

Previews

White Background



This preview shows how the RYB color 211, 190, 188 looks on a white background.

Color Contrast Check

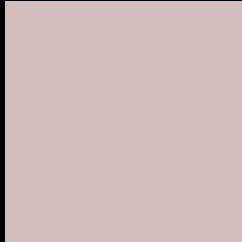
Large Text (above 18pt) WCAG AA × Fail

Any Text WCAG AA × Fail

Large Text (above 18pt) WCAG AAA × Fail

Any Text WCAG AAA × Fail

Black Background



This preview shows how the RYB color 211, 190, 188 looks on a black background.

Color Contrast Check

Large Text (above 18pt) WCAG AA ✓ Pass

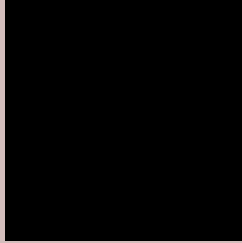
Any Text WCAG AA ✓ Pass

Large Text (above 18pt) WCAG AAA ✓ Pass

Any Text WCAG AAA ✓ Pass

If you want to check with other color combinations, try the [Color Contrast Checker](#).

RYB 211, 190, 188 Background



This preview shows how black text looks on a background with the RYB color 211, 190, 188.



This preview shows how white text looks on a background with the RYB color 211, 190, 188.

Color Blindness Simulation

Color vision deficiency is a very complex topic, and I could not describe the different causes any better than Wikipedia does, so if you want to learn more, you should check out their [article about color blindness](#).


Dichromacy



Original Color
211, 190, 188

Protanopia
199, 197, 190

Deuteranopia
216, 188, 188



Tritanopia
213, 188, 202

Trichromacy



Original Color

211, 190, 188

Protanomaly

203, 193, 189

Deuteranomaly

214, 189, 188

Tritanomaly

212, 189, 197

Monochromacy



Original Color

211, 190, 188

Achromatopsia

196, 196, 196

Achromatomaly

201, 194, 193

CSS Examples

Text

The CSS property to change the color of the text to RYB 211, 190, 188 is called "color". The color property can be set on classes, ids or directly on the HTML element.

This example shows how text in the color rgb(211, 190, 188) looks like.

```
.text, #text, p{  
    color:rgb(211, 190, 188)  
}
```

If you want to add a text shadow in that color use the text-shadow property, you can generate a text shadow directly with our [CSS Text Shadow Generator](#).

Here you see how black text with a 4 pixel rgb(211, 190, 188) colored shadow looks like.

```
.shadow{ text-shadow: 4px 4px 2px rgb(211, 190, 188) }
```

Border

The CSS property to change the border of an element to RYB 211, 190, 188 is called "border". The border property can be set on classes, ids or directly on the HTML element.

This example shows the color as border, it can be applied via the CSS property "border" or "border-color".

```
.border, #border, table{ border:4px solid rgb(211, 190, 188) }
```

If only the border color should be changed use the property `border-color`.

```
.border{ border-color:rgb(211, 190, 188) }
```

If you want to add a box shadow in that color use:

Here you see how a box with a 4 pixel `rgb(211, 190, 188)` colored shadow looks like.

```
.boxshadow{ -moz-box-shadow:4px 4px 4px 4px rgb(211, 190, 188); -webkit-box-shadow:4px 4px 4px 4px rgb(211, 190, 188); box-shadow:4px 4px 4px 4px rgb(211, 190, 188) }
```

Background

The CSS property to change the background color of an element to RGB 211, 190, 188 is called "background". The background property can be set on classes, ids or directly on the HTML element.

```
.background, #background, body{  
background: rgb(211, 190, 188) }
```

If only the background color should be changed can be used:

```
.background{ background-color: rgb(211,  
190, 188) }
```

This example shows the color as background, it is applied via the CSS property "background".

To optimize and compress your CSS code, you can use our [online CSS compressor and optimizer](#) based on csstidy. If you want to create a linear or radial gradient as background or border, check our [CSS Gradient Generator](#).

Hey! You found this booklet interesting? Support Converting Colors with the new Membership Option!

The pro membership hides all ads, plus gives you double the colors in the color bucket, and more awesome pro features!

[Learn more, Memberships starting at \\$2.50/m!](#)

**Follow me
on Twitter!**

@ConvertingColor