

Converting Colors

`RYB(211, 193, 177)`

Have a look what the booklet for
RYB(211, 193, 177) contains.

RYB(211, 193, 177)	3
<i>Conversions</i>	4
<i>Details</i>	6
<i>Harmonies</i>	11
<i>Previews</i>	23
<i>Color Blindness Simulation</i>	26
<i>CSS Examples</i>	29

Color

R_YB(211, 193, 177)

Conversions

Conversions Part 1

Format	Color
Hex	D3BCB1
RGB	211, 188, 177
RGB Percent	83%, 74%, 69%
CMY	0.1725, 0.2632, 0.3059
CMYK	0.00, 0.11, 0.16, 0.17
HSL	19°, 28%, 76%
HSV	19°, 16%, 83%
XYZ	52.7574, 52.9384, 49.0325
YIQ	193.6230, 17.2390, 1.4550

Conversions

Conversions Part 2

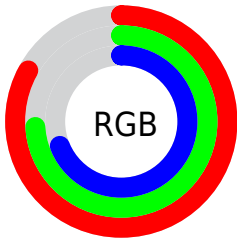
Format	Color
RYB	211, 193, 177
Decimal	13876401
CIELab	77.84, 6.44, 8.49
CIELCh	78, 10.657, 52.835
Yxy	52.9384, 0.3410, 0.3421
Android (android.graphics.Color)	4292066481 (0xFFD3BCB1)
YUV	193.6230, -8.1951, 15.2396
Hunter-Lab	72.7588, 2.1025, 10.9753

Details

The RYB color **211, 193, 177** is a light color, and the websafe version is hex **CCCCCC**. A complement of this color would be **177, 191, 211**, and the grayscale version is **194, 194, 194**.

A 20% lighter version of the original color is **255, 255, 233**, and **156, 141, 124** is the 20% darker color. If you saturate the color by 10%, you get **211, 183, 156**, and if you desaturate by 10%, it is **211, 204, 198**.

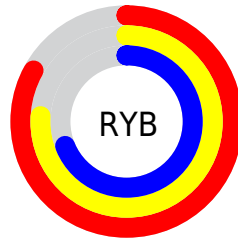
Distribution



Red (83%)

Green (74%)

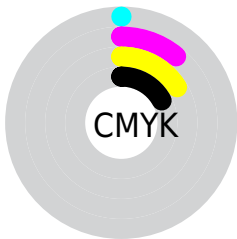
Blue (69%)



Red (83%)

Yellow (76%)

Blue (69%)

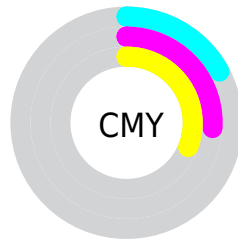


Cyan (0%)

Magenta (11%)

Yellow (16%)

Black (17%)



Cyan (17%)

Magenta (26%)

Yellow (31%)

Brightness & Saturation Gradients

These gradients show how the RYB color 211, 193, 177 changes by changing the brightness by 10 percent. The first figure shows a shift by +10% for each color and the second figure -10%.

Similar to the brightness gradients but the following saturation gradients show a change of the RYB color 211, 193, 177 by changing the saturation by 10% instead.

 211, 193, 177

255, 255, 255

 255, 255, 233

 211, 193, 177

 183, 167, 150

 156, 141, 124

 130, 113, 100

 105, 89, 76

 80, 67, 53

 57, 44, 32

 35, 30, 8

 0, 0, 0

 211, 193, 177

 211, 193, 177

■ 211, 183, 156

■ 211, 204, 198

■ 211, 170, 135

■ 211, 214, 219

■ 211, 160, 114

■ 211, 223, 240

■ 211, 147, 93

■ 211, 230, 255

■ 211, 136, 72

■ 211, 233, 255

■ 211, 127, 50

■ 211, 114, 29

■ 211, 104, 8

■ 211, 100, 0

Harmonies

Analogous

The Analogous color harmony consists of three colors that are next to each other on the color wheel.



214, 186, 185



211, 193, 177



193, 203, 173

Triad

The Triadic color harmony groups three colors that are evenly spaced from another and form a triangle on the color wheel.



211, 193, 177



172, 187, 198



192, 191, 211

Complementary

The Complementary color scheme is a pair of colors which are on the opposite of each other on the color wheel.



211, 193, 177



177, 191, 211

Split Complementary

Split-complementary colors differ from the complementary color scheme. The scheme consists of three colors, the original color and two neighbors of the complement color.



179, 189, 212



211, 193, 177



168, 183, 200

Square

The Square scheme is like the rectangle color scheme, but the four colors are evenly spaced on the color wheel.



211, 193, 177



180, 197, 196



171, 186, 208



203, 188, 204

Rectangle

The Rectangle color scheme consists of four colors that form a rectangle on the color wheel.



211, 193, 177



176, 196, 173



171, 186, 208



187, 191, 211

Sweetspot

The Sweet Spot groups the original color and five complimentary colors.



211, 193, 177



255, 248, 242



211, 177, 200



128, 123, 120



0, 0, 0



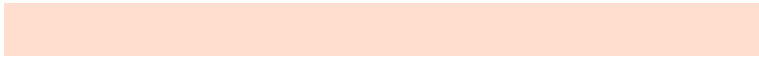
128, 128, 128

Same Dimension

The Same Dimension uses a secret algorithm to generate beautiful new colors.



211, 193, 177



255, 229, 207



184, 211, 177



105, 98, 94



168, 80, 0



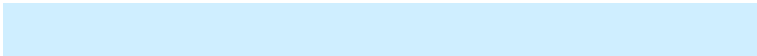
41, 19, 0

Inverse Universe

The Inverse Universe completely reimagines the original color for something new.



177, 191, 211



207, 226, 255



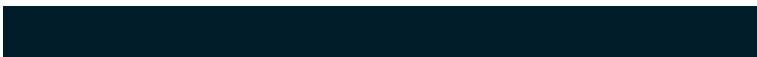
177, 182, 211



94, 98, 105



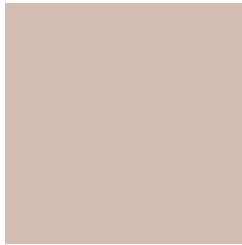
0, 68, 168



0, 17, 41

Previews

White Background



This preview shows how the RYB color 211, 193, 177 looks on a white background.

Color Contrast Check

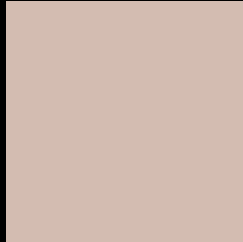
Large Text (above 18pt) WCAG AA × Fail

Any Text WCAG AA × Fail

Large Text (above 18pt) WCAG AAA × Fail

Any Text WCAG AAA × Fail

Black Background



This preview shows how the RYB color 211, 193, 177 looks on a black background.

Color Contrast Check

Large Text (above 18pt) WCAG AA ✓ Pass

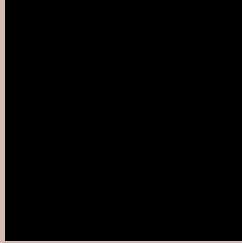
Any Text WCAG AA ✓ Pass

Large Text (above 18pt) WCAG AAA ✓ Pass

Any Text WCAG AAA ✓ Pass

If you want to check with other color combinations, try the [Color Contrast Checker](#).

RYB 211, 193, 177 Background



This preview shows how black text looks on a background with the RYB color 211, 193, 177.



This preview shows how white text looks on a background with the RYB color 211, 193, 177.

Color Blindness Simulation

Color vision deficiency is a very complex topic, and I could not describe the different causes any better than Wikipedia does, so if you want to learn more, you should check out their [article about color blindness](#).


Dichromacy



Original Color
211, 193, 177

Protanopia
190, 199, 179

Deuteranopia
217, 189, 177



Tritanopia
214, 185, 199

Trichromacy



Original Color
211, 193, 177

Protanomaly
201, 203, 178

Deuteranomaly
215, 191, 177

Tritanomaly
213, 186, 191

Monochromacy



Original Color
211, 193, 177

Achromatopsia
194, 194, 194

Achromatomaly
200, 194, 188

CSS Examples

Text

The CSS property to change the color of the text to RYB 211, 193, 177 is called "color". The color property can be set on classes, ids or directly on the HTML element.

This example shows how text in the color rgb(211, 188, 177) looks like.

```
.text, #text, p{  
    color:rgb(211, 188, 177)  
}
```

If you want to add a text shadow in that color use the text-shadow property, you can generate a text shadow directly with our [CSS Text Shadow Generator](#).

Here you see how black text with a 4 pixel rgb(211, 188, 177) colored shadow looks like.

```
.shadow{ text-shadow: 4px 4px 2px rgb(211, 188, 177) }
```

Border

The CSS property to change the border of an element to RYB 211, 193, 177 is called "border". The border property can be set on classes, ids or directly on the HTML element.

This example shows the color as border, it can be applied via the CSS property "border" or "border-color".

```
.border, #border, table{ border:4px solid rgb(211, 188, 177) }
```

If only the border color should be changed use the property `border-color`.

```
.border{ border-color:rgb(211, 188, 177) }
```

If you want to add a box shadow in that color use:

Here you see how a box with a 4 pixel `rgb(211, 188, 177)` colored shadow looks like.

```
.boxshadow{ -moz-box-shadow:4px 4px 4px  
4px rgb(211, 188, 177); -webkit-box-  
shadow:4px 4px 4px 4px rgb(211, 188, 177);  
box-shadow:4px 4px 4px 4px rgb(211, 188,  
177) }
```

Background

The CSS property to change the background color of an element to RGB 211, 188, 177 is called "background". The background property can be set on classes, ids or directly on the HTML element.

```
.background, #background, body{  
background: rgb(211, 188, 177) }
```

If only the background color should be changed can be used:

```
.background{ background-color: rgb(211,  
188, 177) }
```

This example shows the color as background, it is applied via the CSS property "background".

To optimize and compress your CSS code, you can use our [online CSS compressor and optimizer](#) based on csstidy. If you want to create a linear or radial gradient as background or border, check our [CSS Gradient Generator](#).

Hey! You found this booklet interesting? Support Converting Colors with the new Membership Option!

The pro membership hides all ads, plus gives you double the colors in the color bucket, and more awesome pro features!

[Learn more, Memberships starting at \\$2.50/m!](#)

**Follow me
on Twitter!**

@ConvertingColor