

# Converting Colors

`RYB(211, 213, 166)`

Have a look what the booklet for  
RYB(211, 213, 166) contains.

|  |    |
|--|----|
| <b>RYB(211, 213, 166)</b> .....                | 3  |
| <b><i>Conversions</i></b> .....                | 4  |
| <b><i>Details</i></b> .....                    | 6  |
| <b><i>Harmonies</i></b> .....                  | 11 |
| <b><i>Previews</i></b> .....                   | 23 |
| <b><i>Color Blindness Simulation</i></b> ..... | 26 |
| <b><i>CSS Examples</i></b> .....               | 29 |

# **Color**

**R<sub>Y</sub>B(211, 213, 166)**

# Conversions

## Conversions Part 1

| Format      | Color                      |
|-------------|----------------------------|
| Hex         | D5BEA6                     |
| RGB         | 213, 190, 166              |
| RGB Percent | 84%, 75%, 65%              |
| CMY         | 0.1647, 0.2549, 0.3490     |
| CMYK        | 0.00, 0.11, 0.22, 0.16     |
| HSL         | 31°, 36%, 74%              |
| HSV         | 31°, 22%, 84%              |
| XYZ         | 52.7393, 53.7309, 43.6678  |
| YIQ         | 194.1410, 21.4120, -2.5880 |

# Conversions

## Conversions Part 2

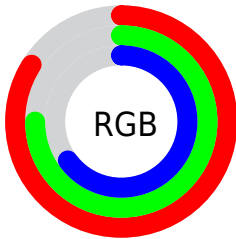
| <b>Format</b>                       | <b>Color</b>                                |
|-------------------------------------|---|
| <a href="#">RYB</a>                 | <a href="#">211, 213, 166</a>               |
| Decimal                             | <a href="#">14007974</a>                    |
| CIELab                              | <a href="#">78.30, 4.38, 15.10</a>          |
| CIELCh                              | <a href="#">78, 15.727, 73.819</a>          |
| Yxy                                 | <a href="#">53.7309, 0.3513, 0.3579</a>     |
| Android<br>(android.graphics.Color) | <a href="#">4292198054<br/>(0xFFD5BEA6)</a> |
| YUV                                 | <a href="#">194.1410, -13.8735, 16.5393</a> |
| Hunter-Lab                          | <a href="#">73.3014, 0.1508, 15.9901</a>    |

# Details

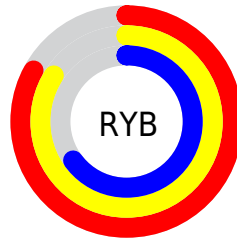
The RYB color **211, 213, 166** is a light color, and the websafe version is hex **CCCCCC**. A complement of this color would be **166, 181, 213**, and the grayscale version is **194, 194, 194**.

A 20% lighter version of the original color is **233, 255, 221**, and **154, 158, 114** is the 20% darker color. If you saturate the color by 10%, you get **209, 213, 145**, and if you desaturate by 10%, it is **213, 213, 187**.

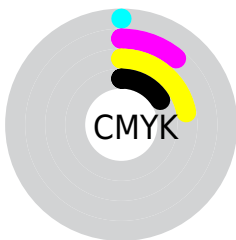
# Distribution



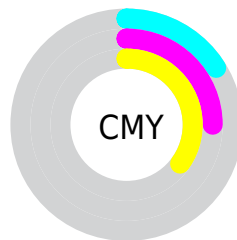
- Red (84%)
- Green (75%)
- Blue (65%)



- Red (83%)
- Yellow (84%)
- Blue (65%)



- Cyan (0%)
- Magenta (11%)
- Yellow (22%)
- Black (16%)



- Cyan (16%)
- Magenta (25%)
- Yellow (35%)

# Brightness & Saturation Gradients

These gradients show how the RYB color 211, 213, 166 changes by changing the brightness by 10 percent. The first figure shows a shift by +10% for each color and the second figure -10%.

Similar to the brightness gradients but the following saturation gradients show a change of the RYB color 211, 213, 166 by changing the saturation by 10% instead.



 211, 213, 166

 211, 213, 166

255, 255, 255

 183, 185, 140

 233, 255, 221

 154, 158, 114

 250, 255, 250

 127, 131, 89

 102, 106, 66

 75, 81, 44

 50, 57, 23

 26, 36, 0

 0, 0, 0

 211, 213, 166

 211, 213, 166

 209, 213, 145

 213, 213, 187

 209, 213, 123

 213, 213, 209

 207, 213, 102


 213, 218, 230

 209, 213, 81


 213, 226, 251

 207, 213, 60

 213, 230, 255

 203, 213, 38

 213, 233, 255

 205, 213, 17

 213, 234, 255

 203, 213, 0

# Harmonies

## Analogous

The Analogous color harmony consists of three colors that are next to each other on the color wheel.



223, 190, 174



211, 213, 166



168, 198, 165

# Triad

The Triadic color harmony groups three colors that are evenly spaced from another and form a triangle on the color wheel.



211, 213, 166



157, 180, 202



205, 188, 215

# Complementary

The Complementary color scheme is a pair of colors which are on the opposite of each other on the color wheel.



211, 213, 166



166, 181, 213

# Split Complementary

Split-complementary colors differ from the complementary color scheme. The scheme consists of three colors, the original color and two neighbors of the complement color.



186, 192, 222



211, 213, 166



158, 182, 213

# Square

The Square scheme is like the rectangle color scheme, but the four colors are evenly spaced on the color wheel.



211, 213, 166



166, 190, 202



169, 187, 221



218, 184, 202

# Rectangle

The Rectangle color scheme consists of four colors that form a rectangle on the color wheel.



211, 213, 166



169, 198, 180



169, 187, 221



199, 189, 218



# Sweetspot

The Sweet Spot groups the original color and five complimentary colors.



211, 213, 166



255, 255, 237



213, 166, 190



126, 128, 117



0, 0, 0



128, 128, 128



# Same Dimension

The Same Dimension uses a secret algorithm to generate beautiful new colors.



211, 213, 166



251, 255, 189



166, 213, 166



105, 107, 96



165, 171, 0



41, 43, 0

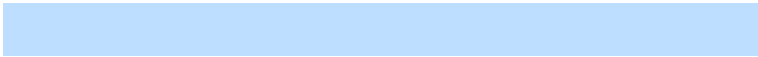


# Inverse Universe

The Inverse Universe completely reimagines the original color for something new.



166, 181, 213



189, 211, 255



166, 166, 213



96, 100, 107



0, 56, 171



0, 14, 43



# Previews

## White Background



This preview shows how the RYB color 211, 213, 166 looks on a white background.

## Color Contrast Check

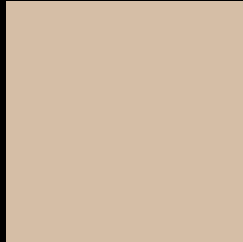
Large Text (above 18pt) WCAG AA × Fail

Any Text WCAG AA × Fail

Large Text (above 18pt) WCAG AAA × Fail

Any Text WCAG AAA × Fail

# Black Background



This preview shows how the RYB color 211, 213, 166 looks on a black background.

## Color Contrast Check

Large Text (above 18pt) WCAG AA ✓ Pass

Any Text WCAG AA ✓ Pass

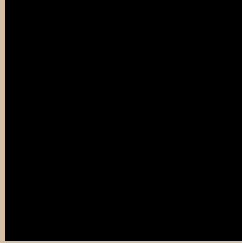
Large Text (above 18pt) WCAG AAA ✓ Pass

Any Text WCAG AAA ✓ Pass

If you want to check with other color combinations, try the [Color Contrast Checker](#).



## R Y B 211, 213, 166 Background



This preview shows how black text looks on a background with the R Y B color 211, 213, 166.



This preview shows how white text looks on a background with the R Y B color 211, 213, 166.

# Color Blindness Simulation

Color vision deficiency is a very complex topic, and I could not describe the different causes any better than Wikipedia does, so if you want to learn more, you should check out their [article about color blindness](#).

## Dichromacy

|   |  |
|---|--|
|   | <b>Original Color</b><br>211, 213, 166 |
|  | <b>Protanopia</b><br>182, 203, 168     |
|  | <b>Deuteranopia</b><br>222, 198, 167   |



**Tritanopia**  
217, 185, 200

# Trichromacy



**Original Color**

211, 213, 166

**Protanomaly**

191, 207, 167

**Deuteranomaly**

219, 202, 167

**Tritanomaly**

216, 187, 188

# Monochromacy



**Original Color**

211, 213, 166

**Achromatopsia**

194, 194, 194

**Achromatomaly**

199, 201, 184

# CSS Examples

## Text

The CSS property to change the color of the text to RYB 211, 213, 166 is called "color". The color property can be set on classes, ids or directly on the HTML element.

This example shows how text in the color rgb(213, 190, 166) looks like.

```
.text, #text, p{  
    color:rgb(213, 190, 166)  
}
```

If you want to add a text shadow in that color use the text-shadow property, you can generate a text shadow directly with our [CSS Text Shadow Generator](#).

Here you see how black text with a 4 pixel rgb(213, 190, 166) colored shadow looks like.

```
.shadow{ text-shadow: 4px 4px 2px rgb(213, 190, 166) }
```

## Border

The CSS property to change the border of an element to RYB 211, 213, 166 is called "border". The border property can be set on classes, ids or directly on the HTML element.

This example shows the color as border, it can be applied via the CSS property "border" or "border-color".

```
.border, #border, table{ border:4px solid rgb(213, 190, 166) }
```

If only the border color should be changed use the property `border-color`.

```
.border{ border-color:rgb(213, 190, 166) }
```

If you want to add a box shadow in that color use:

Here you see how a box with a 4 pixel `rgb(213, 190, 166)` colored shadow looks like.

```
.boxshadow{ -moz-box-shadow:4px 4px 4px  
4px rgb(213, 190, 166); -webkit-box-  
shadow:4px 4px 4px 4px rgb(213, 190, 166);  
box-shadow:4px 4px 4px 4px rgb(213, 190,  
166) }
```

# Background

The CSS property to change the background color of an element to RGB 211, 213, 166 is called "background". The background property can be set on classes, ids or directly on the HTML element.

```
.background, #background, body{  
background: rgb(213, 190, 166) }
```

If only the background color should be changed can be used:

```
.background{ background-color: rgb(213,  
190, 166) }
```

This example shows the color as background, it is applied via the CSS property "background".

To optimize and compress your CSS code, you can use our [online CSS compressor and optimizer](#) based on csstidy. If you want to create a linear or radial gradient as background or border, check our [CSS Gradient Generator](#).



Hey! You found this booklet interesting? Support Converting Colors with the new Membership Option!

The pro membership hides all ads, plus gives you double the colors in the color bucket, and more awesome pro features!

**[Learn more, Memberships starting at \\$2.50/m!](#)**

**Follow me  
on Twitter!**

@ConvertingColor