

Converting Colors

`RYB(212, 152, 145)`

Have a look what the booklet for RYB(212, 152, 145) contains.

RYB(212, 152, 145)	3
<i>Conversions</i>	4
<i>Details</i>	6
<i>Harmonies</i>	11
<i>Previews</i>	23
<i>Color Blindness Simulation</i>	26
<i>CSS Examples</i>	29

Color

$\text{RYB}(212, 152, 145)$

Conversions

Conversions Part 1

Format	Color
Hex	D49791
RGB	212, 151, 145
RGB Percent	83%, 59%, 57%
CMY	0.1686, 0.4065, 0.4314
CMYK	0.00, 0.29, 0.32, 0.17
HSL	6°, 44%, 70%
HSV	6°, 32%, 83%
XYZ	43.3833, 38.2835, 31.8910
YIQ	168.5550, 38.2820, 11.0660

Conversions

Conversions Part 2

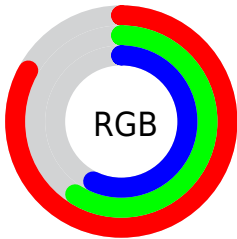
Format	Color
R _Y B	212, 152, 145
Decimal	13932433
CIE Lab	68.23, 21.92, 12.40
CIE LCh	68, 25.183, 29.503
Yxy	38.2835, 0.3820, 0.3371
Android (android.graphics.Color)	4292122513 (0xFFD49791)
YUV	168.5550, -11.6126, 38.1013
Hunter-Lab	61.8737, 16.8780, 12.7523

Details

The RYB color **212, 152, 145** is a light color, and the websafe version is hex **CC9999**. A complement of this color would be **145, 177, 212**, and the grayscale version is **169, 169, 169**.

A 20% lighter version of the original color is **255, 207, 199**, and **156, 100, 95** is the 20% darker color. If you saturate the color by 10%, you get **212, 133, 124**, and if you desaturate by 10%, it is **212, 172, 166**.

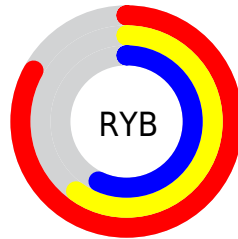
Distribution



Red (83%)

Green (59%)

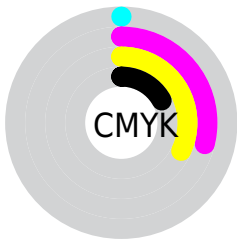
Blue (57%)



Red (83%)

Yellow (60%)

Blue (57%)

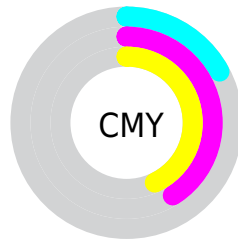


Cyan (0%)

Magenta (29%)

Yellow (32%)

Black (17%)



Cyan (17%)

Magenta (41%)

Yellow (43%)

Brightness & Saturation Gradients

These gradients show how the RYB color 212, 152, 145 changes by changing the brightness by 10 percent. The first figure shows a shift by +10% for each color and the second figure -10%.

Similar to the brightness gradients but the following saturation gradients show a change of the RYB color 212, 152, 145 by changing the saturation by 10% instead.

 212, 152, 145

 212, 152, 145

255, 255, 255

 184, 126, 119

 255, 207, 199

 156, 100, 95

 255, 236, 227

 129, 76, 71

 102, 52, 49

 77, 30, 28

 53, 9, 1

 28, 0, 1

 0, 0, 0

 212, 152, 145

 212, 152, 145

■ 212, 133, 124

■ 212, 172, 166

■ 212, 114, 103

■ 212, 190, 187

■ 212, 95, 81

■ 212, 209, 209

■ 212, 77, 60

■ 212, 220, 230

■ 212, 57, 39

■ 212, 230, 251

■ 212, 38, 18

■ 212, 234, 255

■ 212, 22, 0

Harmonies

Analogous

The Analogous color harmony consists of three colors that are next to each other on the color wheel.



210, 150, 168



212, 152, 145



202, 176, 128

Triad

The Triadic color harmony groups three colors that are evenly spaced from another and form a triangle on the color wheel.



212, 152, 145



133, 169, 177



138, 159, 211

Complementary

The Complementary color scheme is a pair of colors which are on the opposite of each other on the color wheel.



212, 152, 145



145, 177, 212

Split Complementary

Split-complementary colors differ from the complementary color scheme. The scheme consists of three colors, the original color and two neighbors of the complement color.



110, 149, 205



212, 152, 145



110, 148, 179

Square

The Square scheme is like the rectangle color scheme, but the four colors are evenly spaced on the color wheel.



212, 152, 145



126, 172, 139



99, 141, 188



169, 161, 206

Rectangle

The Rectangle color scheme consists of four colors that form a rectangle on the color wheel.



212, 152, 145



170, 190, 122



99, 141, 188



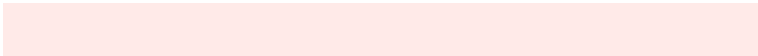
127, 156, 211

Sweetspot

The Sweet Spot groups the original color and five complimentary colors.



212, 152, 145



255, 234, 232



212, 145, 206



128, 115, 113



0, 0, 0



128, 128, 128

Same Dimension

The Same Dimension uses a secret algorithm to generate beautiful new colors.



212, 152, 145



255, 168, 158



193, 212, 145



107, 97, 96



171, 18, 0



43, 4, 0

Inverse Universe

The Inverse Universe completely reimagines the original color for something new.



145, 177, 212



158, 204, 255



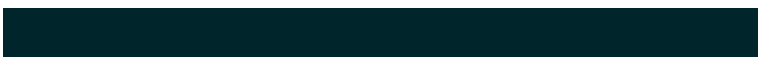
145, 165, 212



96, 101, 107



0, 81, 171



0, 20, 43

Previews

White Background



This preview shows how the RYB color 212, 152, 145 looks on a white background.

Color Contrast Check

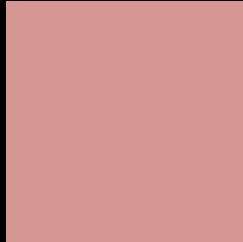
Large Text (above 18pt) WCAG AA × Fail

Any Text WCAG AA × Fail

Large Text (above 18pt) WCAG AAA × Fail

Any Text WCAG AAA × Fail

Black Background



This preview shows how the RYB color 212, 152, 145 looks on a black background.

Color Contrast Check

Large Text (above 18pt) WCAG AA ✓ Pass

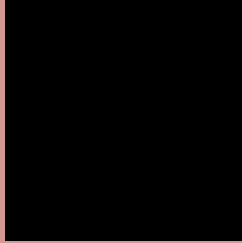
Any Text WCAG AA ✓ Pass

Large Text (above 18pt) WCAG AAA ✓ Pass

Any Text WCAG AAA ✓ Pass

If you want to check with other color combinations, try the [Color Contrast Checker](#).

RYB 212, 152, 145 Background



This preview shows how black text looks on a background with the RYB color 212, 152, 145.



This preview shows how white text looks on a background with the RYB color 212, 152, 145.

Color Blindness Simulation

Color vision deficiency is a very complex topic, and I could not describe the different causes any better than Wikipedia does, so if you want to learn more, you should check out their [article about color blindness](#).

Dichromacy



Original Color
212, 152, 145

Protanopia
164, 173, 153

Deuteranopia
191, 169, 143



Tritanopia
214, 149, 160

Trichromacy



Original Color

212, 152, 145

Protanomaly

187, 166, 150

Deuteranomaly

199, 161, 144

Tritanomaly

213, 150, 155

Monochromacy



Original Color

212, 152, 145

Achromatopsia

169, 169, 169

Achromatomaly

185, 163, 160

CSS Examples

Text

The CSS property to change the color of the text to RYB 212, 152, 145 is called "color". The color property can be set on classes, ids or directly on the HTML element.

This example shows how text in the color `rgb(212, 151, 145)` looks like.

```
.text, #text, p{  
    color:rgb(212, 151, 145)  
}
```

If you want to add a text shadow in that color use the text-shadow property, you can generate a text shadow directly with our [CSS Text Shadow Generator](#).

Here you see how black text with a 4 pixel rgb(212, 151, 145) colored shadow looks like.

```
.shadow{ text-shadow: 4px 4px 2px rgb(212, 151, 145) }
```

Border

The CSS property to change the border of an element to RYB 212, 152, 145 is called "border". The border property can be set on classes, ids or directly on the HTML element.

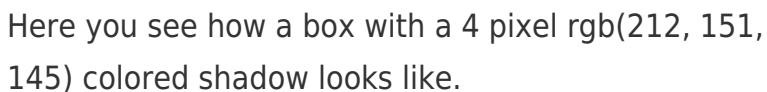
This example shows the color as border, it can be applied via the CSS property "border" or "border-color".

```
.border, #border, table{ border:4px solid rgb(212, 151, 145) }
```

If only the border color should be changed use the property `border-color`.

```
.border{ border-color:rgb(212, 151, 145) }
```

If you want to add a box shadow in that color use:



Here you see how a box with a 4 pixel `rgb(212, 151, 145)` colored shadow looks like.

```
.boxshadow{ -moz-box-shadow:4px 4px 4px  
4px rgb(212, 151, 145); -webkit-box-  
shadow:4px 4px 4px 4px rgb(212, 151, 145);  
box-shadow:4px 4px 4px 4px rgb(212, 151,  
145) }
```

Background

The CSS property to change the background color of an element to RGB 212, 152, 145 is called "background". The background property can be set on classes, ids or directly on the HTML element.

```
.background, #background, body{  
background: rgb(212, 151, 145) }
```

If only the background color should be changed can be used:

```
.background{ background-color: rgb(212,  
151, 145) }
```

This example shows the color as background, it is applied via the CSS property "background".

To optimize and compress your CSS code, you can use our [online CSS compressor and optimizer](#) based on csstidy. If you want to create a linear or radial gradient as background or border, check our [CSS Gradient Generator](#).

Hey! You found this booklet interesting? Support Converting Colors with the new Membership Option!

The pro membership hides all ads, plus gives you double the colors in the color bucket, and more awesome pro features!

[Learn more, Memberships starting at \\$2.50/m!](#)

**Follow me
on Twitter!**

@ConvertingColor