

Converting Colors

`RYB(212, 201, 196)`

Have a look what the booklet for
RYB(212, 201, 196) contains.

RYB(212, 201, 196)	3
<i>Conversions</i>	4
<i>Details</i>	6
<i>Harmonies</i>	11
<i>Previews</i>	23
<i>Color Blindness Simulation</i>	26
<i>CSS Examples</i>	29

Color

R_YB(212, 201, 196)

Conversions

Conversions Part 1

Format	Color
Hex	D4C8C4
RGB	212, 200, 196
RGB Percent	83%, 78%, 77%
CMY	0.1686, 0.2164, 0.2314
CMYK	0.00, 0.06, 0.08, 0.17
HSL	14°, 16%, 80%
HSV	14°, 8%, 83%
XYZ	57.7254, 59.2029, 60.6094
YIQ	203.1320, 8.4360, 1.3000

Conversions

Conversions Part 2

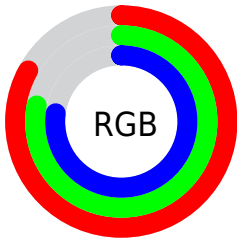
Format	Color
RYB	212, 201, 196
Decimal	13945028
CIELab	81.40, 3.59, 3.41
CIELCh	81, 4.952, 43.587
Yxy	59.2029, 0.3251, 0.3335
Android (android.graphics.Color)	4292135108 (0xFFD4C8C4)
YUV	203.1320, -3.5161, 7.7772
Hunter-Lab	76.9435, -0.7348, 7.1569

Details

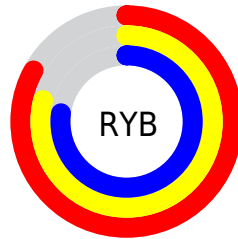
The RYB color **212, 201, 196** is a light color, and the websafe version is hex **CCCCCC**. A complement of this color would be **196, 203, 212**, and the grayscale version is **203, 203, 203**.

A 20% lighter version of the original color is **253, 255, 253**, and **157, 147, 142** is the 20% darker color. If you saturate the color by 10%, you get **212, 187, 175**, and if you desaturate by 10%, it is **212, 214, 217**.

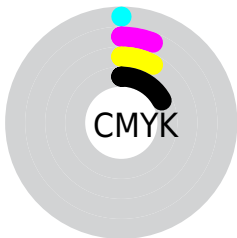
Distribution



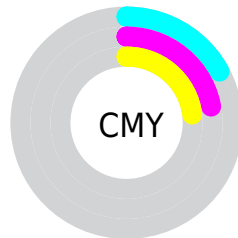
- Red (83%)
- Green (78%)
- Blue (77%)



- Red (83%)
- Yellow (79%)
- Blue (77%)



- Cyan (0%)
- Magenta (6%)
- Yellow (8%)
- Black (17%)



- Cyan (17%)
- Magenta (22%)
- Yellow (23%)

Brightness & Saturation Gradients

These gradients show how the RYB color 212, 201, 196 changes by changing the brightness by 10 percent. The first figure shows a shift by +10% for each color and the second figure -10%.

Similar to the brightness gradients but the following saturation gradients show a change of the RYB color 212, 201, 196 by changing the saturation by 10% instead.

■ 212, 201, 196

255, 255, 255

253, 255, 253

■ 212, 201, 196

■ 184, 173, 169

■ 157, 147, 142

■ 131, 121, 117

■ 106, 98, 92

■ 82, 73, 69

■ 59, 50, 46


■ 37, 28, 26

■ 16, 2, 0


■ 0, 0, 0

 212, 201, 196


 212, 201, 196

 212, 187, 175


 212, 214, 217

 212, 172, 154

 212, 223, 238

 212, 157, 132

 212, 232, 255

 212, 142, 111

 212, 234, 255

 212, 128, 90

 212, 114, 69

 212, 99, 48

 212, 85, 26

 212, 69, 5

Harmonies

Analogous

The Analogous color harmony consists of three colors that are next to each other on the color wheel.



213, 199, 200



212, 201, 196



209, 209, 193

Triad

The Triadic color harmony groups three colors that are evenly spaced from another and form a triangle on the color wheel.



212, 201, 196



194, 202, 205



200, 202, 211

Complementary

The Complementary color scheme is a pair of colors which are on the opposite of each other on the color wheel.



212, 201, 196



196, 203, 212

Split Complementary

Split-complementary colors differ from the complementary color scheme. The scheme consists of three colors, the original color and two neighbors of the complement color.



195, 200, 211



212, 201, 196



191, 198, 205

Square

The Square scheme is like the rectangle color scheme, but the four colors are evenly spaced on the color wheel.



212, 201, 196



195, 204, 200



192, 199, 208



206, 200, 209

Rectangle

The Rectangle color scheme consists of four colors that form a rectangle on the color wheel.



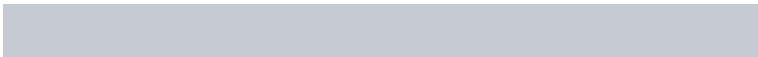
212, 201, 196



199, 206, 193



192, 199, 208



198, 201, 211

Sweetspot

The Sweet Spot groups the original color and five complimentary colors.



212, 201, 196



255, 251, 250



212, 196, 208



128, 127, 125



0, 0, 0



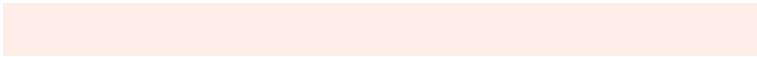
128, 128, 128

Same Dimension

The Same Dimension uses a secret algorithm to generate beautiful new colors.



212, 201, 196



255, 240, 232



201, 212, 196



107, 100, 96



171, 54, 0



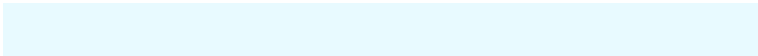
43, 13, 0

Inverse Universe

The Inverse Universe completely reimagines the original color for something new.



196, 203, 212



232, 242, 255



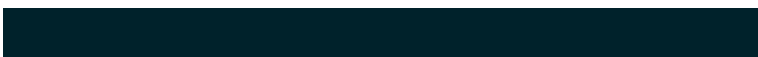
196, 199, 212



96, 101, 107



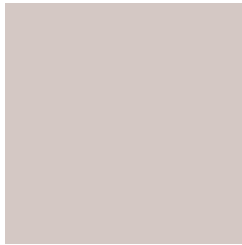
0, 74, 171



0, 19, 43

Previews

White Background



This preview shows how the RYB color 212, 201, 196 looks on a white background.

Color Contrast Check

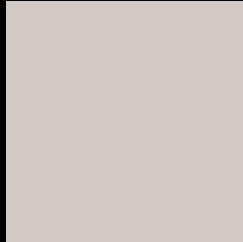
Large Text (above 18pt) WCAG AA × Fail

Any Text WCAG AA × Fail

Large Text (above 18pt) WCAG AAA × Fail

Any Text WCAG AAA × Fail

Black Background



This preview shows how the RYB color 212, 201, 196 looks on a black background.

Color Contrast Check

Large Text (above 18pt) WCAG AA ✓ Pass

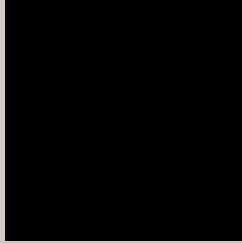
Any Text WCAG AA ✓ Pass

Large Text (above 18pt) WCAG AAA ✓ Pass

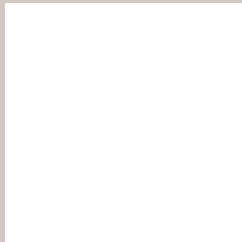
Any Text WCAG AAA ✓ Pass

If you want to check with other color combinations, try the [Color Contrast Checker](#).

RYB 212, 201, 196 Background



This preview shows how black text looks on a background with the RYB color 212, 201, 196.



This preview shows how white text looks on a background with the RYB color 212, 201, 196.

Color Blindness Simulation

Color vision deficiency is a very complex topic, and I could not describe the different causes any better than Wikipedia does, so if you want to learn more, you should check out their [article about color blindness](#).

Dichromacy



Original Color
212, 201, 196

Protanopia
207, 204, 197

Deuteranopia
224, 196, 197



Tritanopia
214, 197, 213

Trichromacy



Original Color

212, 201, 196

Protanomaly

209, 203, 197

Deuteranomaly

220, 197, 197

Tritanomaly

213, 198, 207

Monochromacy



Original Color

212, 201, 196

Achromatopsia

203, 203, 203

Achromatomaly

206, 203, 200

CSS Examples

Text

The CSS property to change the color of the text to RYB 212, 201, 196 is called "color". The color property can be set on classes, ids or directly on the HTML element.

This example shows how text in the color rgb(212, 200, 196) looks like.

```
.text, #text, p{  
    color:rgb(212, 200, 196)  
}
```

If you want to add a text shadow in that color use the text-shadow property, you can generate a text shadow directly with our [CSS Text Shadow Generator](#).

Here you see how black text with a 4 pixel rgb(212, 200, 196) colored shadow looks like.

```
.shadow{ text-shadow: 4px 4px 2px rgb(212, 200, 196) }
```

Border

The CSS property to change the border of an element to RYB 212, 201, 196 is called "border". The border property can be set on classes, ids or directly on the HTML element.

This example shows the color as border, it can be applied via the CSS property "border" or "border-color".

```
.border, #border, table{ border:4px solid rgb(212, 200, 196) }
```

If only the border color should be changed use the property `border-color`.

```
.border{ border-color:rgb(212, 200, 196) }
```

If you want to add a box shadow in that color use:

Here you see how a box with a 4 pixel `rgb(212, 200, 196)` colored shadow looks like.

```
.boxshadow{ -moz-box-shadow:4px 4px 4px 4px rgb(212, 200, 196); -webkit-box-shadow:4px 4px 4px 4px rgb(212, 200, 196); box-shadow:4px 4px 4px 4px rgb(212, 200, 196) }
```

Background

The CSS property to change the background color of an element to RYB 212, 201, 196 is called "background". The background property can be set on classes, ids or directly on the HTML element.

```
.background, #background, body{  
background: rgb(212, 200, 196) }
```

If only the background color should be changed can be used:

```
.background{ background-color: rgb(212,  
200, 196) }
```

This example shows the color as background, it is applied via the CSS property "background".

To optimize and compress your CSS code, you can use our [online CSS compressor and optimizer](#) based on csstidy. If you want to create a linear or radial gradient as background or border, check our [CSS Gradient Generator](#).

Hey! You found this booklet interesting? Support Converting Colors with the new Membership Option!

The pro membership hides all ads, plus gives you double the colors in the color bucket, and more awesome pro features!

[Learn more, Memberships starting at \\$2.50/m!](#)

**Follow me
on Twitter!**

@ConvertingColor