

Converting Colors

`RYB(213, 176, 140)`

Have a look what the booklet for
RYB(213, 176, 140) contains.

RYB(213, 176, 140)	3
<i>Conversions</i>	4
<i>Details</i>	6
<i>Harmonies</i>	11
<i>Previews</i>	23
<i>Color Blindness Simulation</i>	26
<i>CSS Examples</i>	29

Color

$\text{RYB}(213, 176, 140)$

Conversions

Conversions Part 1

Format	Color
Hex	D5A48C
RGB	213, 164, 140
RGB Percent	84%, 64%, 55%
CMY	0.1647, 0.3564, 0.4510
CMYK	0.00, 0.23, 0.34, 0.16
HSL	20°, 46%, 69%
HSV	20°, 34%, 84%
XYZ	45.4694, 42.6299, 30.6428
YIQ	175.9150, 36.9080, 2.9240

Conversions

Conversions Part 2

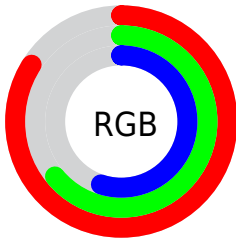
Format	Color
R_{YB}	213, 176, 140
Decimal	14001292
CIE _{Lab}	71.30, 14.74, 19.46
CIE _{LCh}	71, 24.411, 52.851
Yxy	42.6299, 0.3829, 0.3590
Android (android.graphics.Color)	4292191372 (0xFFD5A48C)
YUV	175.9150, -17.7061, 32.5235
Hunter-Lab	65.2916, 10.0479, 17.8780

Details

The RYB color **213, 176, 140** is a light color, and the websafe version is hex **CC9999**. A complement of this color would be **140, 169, 213**, and the grayscale version is **176, 176, 176**.

A 20% lighter version of the original color is **255, 236, 194**, and **157, 123, 90** is the 20% darker color. If you saturate the color by 10%, you get **213, 165, 119**, and if you desaturate by 10%, it is **213, 186, 161**.

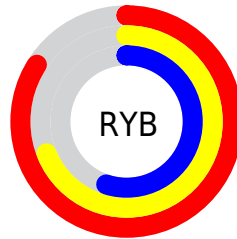
Distribution



Red (84%)

Green (64%)

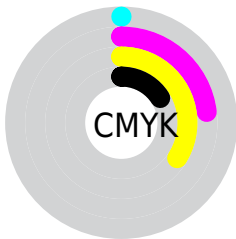
Blue (55%)



Red (84%)

Yellow (69%)

Blue (55%)

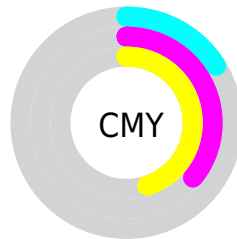


Cyan (0%)

Magenta (23%)

Yellow (34%)

Black (16%)



Cyan (16%)

Magenta (36%)

Yellow (45%)

Brightness & Saturation Gradients

These gradients show how the RYB color 213, 176, 140 changes by changing the brightness by 10 percent. The first figure shows a shift by +10% for each color and the second figure -10%.

Similar to the brightness gradients but the following saturation gradients show a change of the RYB color 213, 176, 140 by changing the saturation by 10% instead.

 213, 176, 140

 213, 176, 140

255, 255, 255

 185, 150, 114

 255, 236, 194

 157, 123, 90

 231, 255, 222

 130, 100, 66

 250, 255, 250

 104, 74, 44


 78, 52, 23

 54, 34, 0

 31, 0, 0

 0, 0, 0

 213, 176, 140

 213, 176, 140

■ 213, 165, 119

■ 213, 186, 161

■ 213, 156, 97

■ 213, 198, 183

■ 213, 143, 76

■ 213, 209, 204

■ 213, 133, 55

■ 213, 218, 225

■ 213, 122, 34

■ 213, 226, 247

■ 213, 113, 12

■ 213, 233, 255

■ 213, 104, 0

■ 213, 234, 255

Harmonies

Analogous

The Analogous color harmony consists of three colors that are next to each other on the color wheel.



220, 159, 158



213, 176, 140



172, 196, 131

Triad

The Triadic color harmony groups three colors that are evenly spaced from another and form a triangle on the color wheel.



213, 176, 140



124, 161, 187



171, 171, 215

Complementary

The Complementary color scheme is a pair of colors which are on the opposite of each other on the color wheel.



213, 176, 140



140, 169, 213

Split Complementary

Split-complementary colors differ from the complementary color scheme. The scheme consists of three colors, the original color and two neighbors of the complement color.



140, 166, 218



213, 176, 140



111, 150, 191

Square

The Square scheme is like the rectangle color scheme, but the four colors are evenly spaced on the color wheel.



213, 176, 140



147, 184, 183



116, 155, 209



198, 163, 202

Rectangle

The Rectangle color scheme consists of four colors that form a rectangle on the color wheel.



213, 176, 140



137, 181, 131



116, 155, 209



161, 171, 218

Sweetspot

The Sweet Spot groups the original color and five complimentary colors.



213, 176, 140



255, 242, 230



213, 140, 190



128, 119, 112



0, 0, 0



128, 128, 128

Same Dimension

The Same Dimension uses a secret algorithm to generate beautiful new colors.



213, 176, 140



255, 203, 150



156, 213, 140



107, 102, 96



171, 83, 0



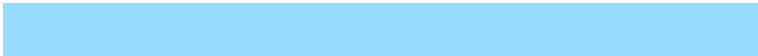
43, 21, 0

Inverse Universe

The Inverse Universe completely reimagines the original color for something new.



140, 169, 213



150, 192, 255



140, 151, 213



96, 101, 107



0, 68, 171



0, 17, 43

Previews

White Background



This preview shows how the RYB color 213, 176, 140 looks on a white background.

Color Contrast Check

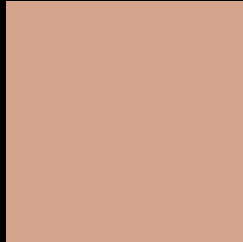
Large Text (above 18pt) WCAG AA × Fail

Any Text WCAG AA × Fail

Large Text (above 18pt) WCAG AAA × Fail

Any Text WCAG AAA × Fail

Black Background



This preview shows how the RYB color 213, 176, 140 looks on a black background.

Color Contrast Check

Large Text (above 18pt) WCAG AA ✓ Pass

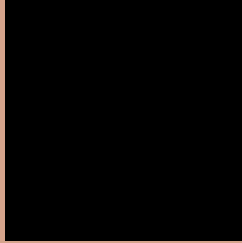
Any Text WCAG AA ✓ Pass

Large Text (above 18pt) WCAG AAA ✓ Pass

Any Text WCAG AAA ✓ Pass

If you want to check with other color combinations, try the [Color Contrast Checker](#).

RYB 213, 176, 140 Background



This preview shows how black text looks on a background with the RYB color 213, 176, 140.



This preview shows how white text looks on a background with the RYB color 213, 176, 140.

Color Blindness Simulation

Color vision deficiency is a very complex topic, and I could not describe the different causes any better than Wikipedia does, so if you want to learn more, you should check out their [article about color blindness](#).


Dichromacy



Original Color
213, 176, 140

Protanopia
160, 185, 145

Deuteranopia
204, 191, 139



Tritanopia
216, 160, 172

Trichromacy



Original Color
213, 176, 140

Protanomaly
191, 195, 143

Deuteranomaly
207, 187, 139

Tritanomaly
215, 161, 160

Monochromacy



Original Color
213, 176, 140

Achromatopsia
176, 176, 176

Achromatomaly
189, 177, 163

CSS Examples

Text

The CSS property to change the color of the text to RYB 213, 176, 140 is called "color". The color property can be set on classes, ids or directly on the HTML element.

This example shows how text in the color rgb(213, 164, 140) looks like.

```
.text, #text, p{  
    color:rgb(213, 164, 140)  
}
```

If you want to add a text shadow in that color use the text-shadow property, you can generate a text shadow directly with our [CSS Text Shadow Generator](#).

Here you see how black text with a 4 pixel rgb(213, 164, 140) colored shadow looks like.

```
.shadow{ text-shadow: 4px 4px 2px rgb(213, 164, 140) }
```

Border

The CSS property to change the border of an element to RYB 213, 176, 140 is called "border". The border property can be set on classes, ids or directly on the HTML element.

This example shows the color as border, it can be applied via the CSS property "border" or "border-color".

```
.border, #border, table{ border:4px solid rgb(213, 164, 140) }
```

If only the border color should be changed use the property `border-color`.

```
.border{ border-color:rgb(213, 164, 140) }
```

If you want to add a box shadow in that color use:

Here you see how a box with a 4 pixel `rgb(213, 164, 140)` colored shadow looks like.

```
.boxshadow{ -moz-box-shadow:4px 4px 4px  
4px rgb(213, 164, 140); -webkit-box-  
shadow:4px 4px 4px 4px rgb(213, 164, 140);  
box-shadow:4px 4px 4px 4px rgb(213, 164,  
140) }
```

Background

The CSS property to change the background color of an element to RGB 213, 176, 140 is called "background". The background property can be set on classes, ids or directly on the HTML element.

```
.background, #background, body{  
background: rgb(213, 164, 140) }
```

If only the background color should be changed can be used:

```
.background{ background-color: rgb(213,  
164, 140) }
```

This example shows the color as background, it is applied via the CSS property "background".

To optimize and compress your CSS code, you can use our [online CSS compressor and optimizer](#) based on csstidy. If you want to create a linear or radial gradient as background or border, check our [CSS Gradient Generator](#).

Hey! You found this booklet interesting? Support Converting Colors with the new Membership Option!

The pro membership hides all ads, plus gives you double the colors in the color bucket, and more awesome pro features!

[Learn more, Memberships starting at \\$2.50/m!](#)

**Follow me
on Twitter!**

@ConvertingColor