

Converting Colors

`RYB(213, 207, 152)`

Have a look what the booklet for
RYB(213, 207, 152) contains.

RYB(213, 207, 152)	3
<i>Conversions</i>	4
<i>Details</i>	6
<i>Harmonies</i>	11
<i>Previews</i>	23
<i>Color Blindness Simulation</i>	26
<i>CSS Examples</i>	29

Color

R_YB(213, 207, 152)

Conversions

Conversions Part 1

Format	Color
Hex	D5B598
RGB	213, 181, 152
RGB Percent	84%, 71%, 60%
CMY	0.1647, 0.2905, 0.4039
CMYK	0.00, 0.15, 0.29, 0.16
HSL	28°, 42%, 72%
HSV	28°, 29%, 84%
XYZ	49.6162, 49.4293, 36.6315
YIQ	187.2620, 28.3810, -2.2350

Conversions

Conversions Part 2

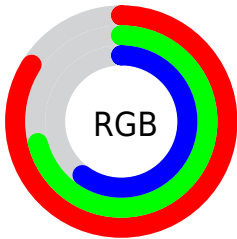
Format	Color
R _Y B	213, 207, 152
Decimal	14005656
CIE Lab	75.72, 7.26, 19.03
CIE LCh	76, 20.370, 69.129
Yxy	49.4293, 0.3657, 0.3643
Android (android.graphics.Color)	4292195736 (0xFFD5B598)
YUV	187.2620, -17.3842, 22.5722
Hunter-Lab	70.3060, 2.9351, 18.3223

Details

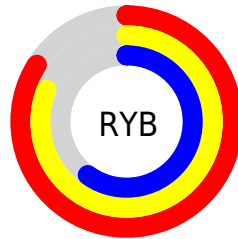
The RYB color **213, 207, 152** is a light color, and the websafe version is hex **FFCC99**. A complement of this color would be **152, 173, 213**, and the grayscale version is **187, 187, 187**.

A 20% lighter version of the original color is **234, 255, 206**, and **157, 153, 101** is the 20% darker color. If you saturate the color by 10%, you get **213, 205, 131**, and if you desaturate by 10%, it is **213, 209, 173**.

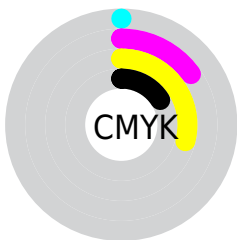
Distribution



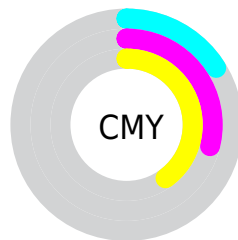
- Red (84%)
- Green (71%)
- Blue (60%)



- Red (84%)
- Yellow (81%)
- Blue (60%)



- Cyan (0%)
- Magenta (15%)
- Yellow (29%)
- Black (16%)



- Cyan (16%)
- Magenta (29%)
- Yellow (40%)

Brightness & Saturation Gradients

These gradients show how the RYB color 213, 207, 152 changes by changing the brightness by 10 percent. The first figure shows a shift by +10% for each color and the second figure -10%.

Similar to the brightness gradients but the following saturation gradients show a change of the RYB color 213, 207, 152 by changing the saturation by 10% instead.


 213, 207, 152

255, 255, 255


 234, 255, 206

 235, 255, 235

 213, 207, 152

 185, 179, 126

 157, 153, 101

 131, 127, 77

 105, 103, 54

 80, 80, 32

 49, 56, 10

 33, 24, 0

 0, 0, 0

 213, 207, 152


 213, 207, 152

 213, 205, 131


 213, 209, 173

 213, 205, 109


 213, 209, 195

 213, 200, 88


 213, 214, 216

 213, 198, 67


 213, 221, 237

 213, 198, 45


 213, 228, 255

 213, 196, 24

 213, 232, 255

 213, 194, 3

 213, 234, 255

 213, 192, 0

Harmonies

Analogous

The Analogous color harmony consists of three colors that are next to each other on the color wheel.



224, 179, 164



213, 207, 152



160, 195, 150

Triad

The Triadic color harmony groups three colors that are evenly spaced from another and form a triangle on the color wheel.



213, 207, 152



139, 170, 198



197, 180, 216

Complementary

The Complementary color scheme is a pair of colors which are on the opposite of each other on the color wheel.



213, 207, 152



152, 173, 213

Split Complementary

Split-complementary colors differ from the complementary color scheme. The scheme consists of three colors, the original color and two neighbors of the complement color.



173, 183, 223



213, 207, 152



136, 169, 210

Square

The Square scheme is like the rectangle color scheme, but the four colors are evenly spaced on the color wheel.



213, 207, 152



153, 182, 196



150, 176, 221



216, 175, 200

Rectangle

The Rectangle color scheme consists of four colors that form a rectangle on the color wheel.



213, 207, 152



154, 191, 164



150, 176, 221



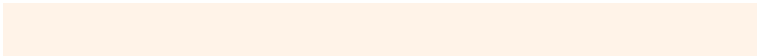
189, 182, 219

Sweetspot

The Sweet Spot groups the original color and five complimentary colors.



213, 207, 152



255, 253, 232



213, 152, 185



128, 126, 113



0, 0, 0



128, 128, 128

Same Dimension

The Same Dimension uses a secret algorithm to generate beautiful new colors.



213, 207, 152



255, 246, 168



154, 213, 152



107, 105, 96



171, 154, 0



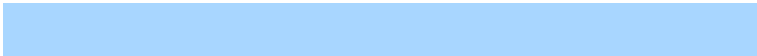
43, 41, 0

Inverse Universe

The Inverse Universe completely reimagines the original color for something new.



152, 173, 213



168, 198, 255



152, 154, 213



96, 100, 107



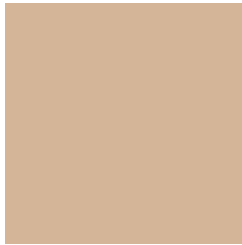
0, 59, 171



0, 15, 43

Previews

White Background



This preview shows how the RYB color 213, 207, 152 looks on a white background.

Color Contrast Check

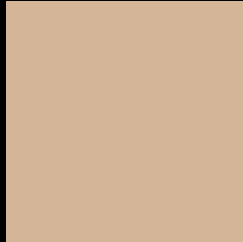
Large Text (above 18pt) WCAG AA × Fail

Any Text WCAG AA × Fail

Large Text (above 18pt) WCAG AAA × Fail

Any Text WCAG AAA × Fail

Black Background



This preview shows how the RYB color 213, 207, 152 looks on a black background.

Color Contrast Check

Large Text (above 18pt) WCAG AA ✓ Pass

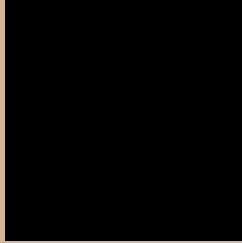
Any Text WCAG AA ✓ Pass

Large Text (above 18pt) WCAG AAA ✓ Pass

Any Text WCAG AAA ✓ Pass

If you want to check with other color combinations, try the [Color Contrast Checker](#).

RYB 213, 207, 152 Background



This preview shows how black text looks on a background with the RYB color 213, 207, 152.



This preview shows how white text looks on a background with the RYB color 213, 207, 152.

Color Blindness Simulation

Color vision deficiency is a very complex topic, and I could not describe the different causes any better than Wikipedia does, so if you want to learn more, you should check out their [article about color blindness](#).


Dichromacy



Original Color
213, 207, 152

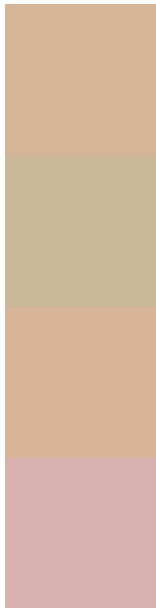
Protanopia
170, 197, 155

Deuteranopia
217, 198, 152



Tritanopia
217, 176, 189

Trichromacy



Original Color
213, 207, 152

Protanomaly
185, 203, 154

Deuteranomaly
216, 202, 152

Tritanomaly
216, 178, 176

Monochromacy



Original Color
213, 207, 152

Achromatopsia
187, 187, 187

Achromatomaly
196, 196, 174

CSS Examples

Text

The CSS property to change the color of the text to RYB 213, 207, 152 is called "color". The color property can be set on classes, ids or directly on the HTML element.

This example shows how text in the color `rgb(213, 181, 152)` looks like.

```
.text, #text, p{  
    color:rgb(213, 181, 152)  
}
```

If you want to add a text shadow in that color use the text-shadow property, you can generate a text shadow directly with our [CSS Text Shadow Generator](#).

Here you see how black text with a 4 pixel rgb(213, 181, 152) colored shadow looks like.

```
.shadow{ text-shadow: 4px 4px 2px rgb(213, 181, 152) }
```

Border

The CSS property to change the border of an element to RYB 213, 207, 152 is called "border". The border property can be set on classes, ids or directly on the HTML element.

This example shows the color as border, it can be applied via the CSS property "border" or "border-color".

```
.border, #border, table{ border:4px solid rgb(213, 181, 152) }
```

If only the border color should be changed use the property `border-color`.

```
.border{ border-color:rgb(213, 181, 152) }
```

If you want to add a box shadow in that color use:

Here you see how a box with a 4 pixel `rgb(213, 181, 152)` colored shadow looks like.

```
.boxshadow{ -moz-box-shadow:4px 4px 4px 4px rgb(213, 181, 152); -webkit-box-shadow:4px 4px 4px 4px rgb(213, 181, 152); box-shadow:4px 4px 4px 4px rgb(213, 181, 152) }
```

Background

The CSS property to change the background color of an element to RYB 213, 207, 152 is called "background". The background property can be set on classes, ids or directly on the HTML element.

```
.background, #background, body{  
background: rgb(213, 181, 152) }
```

If only the background color should be changed can be used:

```
.background{ background-color: rgb(213,  
181, 152) }
```

This example shows the color as background, it is applied via the CSS property "background".

To optimize and compress your CSS code, you can use our [online CSS compressor and optimizer](#) based on csstidy. If you want to create a linear or radial gradient as background or border, check our [CSS Gradient Generator](#).

Hey! You found this booklet interesting? Support Converting Colors with the new Membership Option!

The pro membership hides all ads, plus gives you double the colors in the color bucket, and more awesome pro features!

[Learn more, Memberships starting at \\$2.50/m!](#)

**Follow me
on Twitter!**

@ConvertingColor