

Converting Colors

`RYB(213, 75, 115)`

Have a look what the booklet for
RYB(213, 75, 115) contains.

RYB(213, 75, 115)	3
<i>Conversions</i>	4
<i>Details</i>	6
<i>Harmonies</i>	11
<i>Previews</i>	23
<i>Color Blindness Simulation</i>	26
<i>CSS Examples</i>	29

Color

$\text{RYB}(213, 75, 115)$

Conversions

Conversions Part 1

Format	Color
Hex	D54B73
RGB	213, 75, 115
RGB Percent	84%, 29%, 45%
CMY	0.1647, 0.7059, 0.5490
CMYK	0.00, 0.65, 0.46, 0.16
HSL	343°, 62%, 56%
HSV	343°, 65%, 84%
XYZ	33.0512, 20.4161, 18.4184
YIQ	120.8220, 69.4080, 41.6960

Conversions

Conversions Part 2

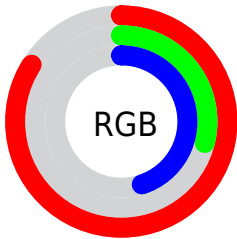
Format	Color
R_{YB}	213, 75, 115
Decimal	13978483
CIE _{Lab}	52.30, 57.19, 7.16
CIE _{LCh}	52, 57.634, 7.133
Yxy	20.4161, 0.4598, 0.2840
Android (android.graphics.Color)	4292168563 (0xFFD54B73)
YUV	120.8220, -2.8702, 80.8401
Hunter-Lab	45.1842, 51.4963, 7.4606

Details

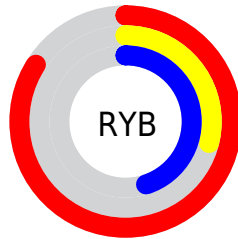
The RYB color **213, 75, 115** is a dark color, and the websafe version is hex **CC3366**. The color can be described as middle muted rose. A complement of this color would be **75, 156, 213**, and the grayscale version is **121, 121, 121**.

A 20% lighter version of the original color is **255, 131, 167**, and **153, 1, 67** is the 20% darker color. If you saturate the color by 10%, you get **213, 54, 100**, and if you desaturate by 10%, it is **213, 96, 130**.

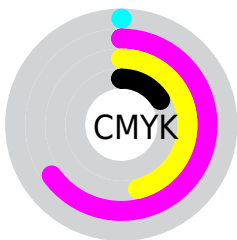
Distribution



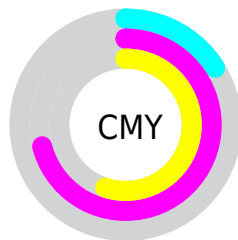
- Red (84%)
- Green (29%)
- Blue (45%)



- Red (84%)
- Yellow (29%)
- Blue (45%)



- Cyan (0%)
- Magenta (65%)
- Yellow (46%)
- Black (16%)



- Cyan (16%)
- Magenta (71%)
- Yellow (55%)

Brightness & Saturation Gradients

These gradients show how the RYB color 213, 75, 115 changes by changing the brightness by 10 percent. The first figure shows a shift by +10% for each color and the second figure -10%.

Similar to the brightness gradients but the following saturation gradients show a change of the RYB color 213, 75, 115 by changing the saturation by 10% instead.



213, 75, 115



213, 75, 115

255, 255, 255



183, 45, 91



255, 131, 167



153, 1, 67



255, 159, 194



124, 0, 45



255, 187, 222



95, 0, 25



255, 216, 250



68, 0, 2



255, 246, 255



38, 0, 1



0, 0, 0



213, 75, 115




213, 75, 115




213, 54, 100




213, 96, 130


 213, 32, 85

 213, 118, 145

 213, 11, 70

 213, 139, 160

 213, 0, 62

 213, 160, 176

 213, 181, 191

 213, 203, 206

 213, 219, 224

 213, 232, 245

 213, 235, 255

Harmonies

Analogous

The Analogous color harmony consists of three colors that are next to each other on the color wheel.



193, 84, 164



213, 75, 115



206, 90, 68

Triad

The Triadic color harmony groups three colors that are evenly spaced from another and form a triangle on the color wheel.



213, 75, 115



38, 138, 90



0, 85, 216

Complementary

The Complementary color scheme is a pair of colors which are on the opposite of each other on the color wheel.



213, 75, 115



75, 156, 213

Split Complementary

Split-complementary colors differ from the complementary color scheme. The scheme consists of three colors, the original color and two neighbors of the complement color.



0, 82, 183



213, 75, 115



0, 92, 145

Square

The Square scheme is like the rectangle color scheme, but the four colors are evenly spaced on the color wheel.



213, 75, 115



14, 138, 1



0, 77, 148



0, 81, 223

Rectangle

The Rectangle color scheme consists of four colors that form a rectangle on the color wheel.



213, 75, 115



190, 143, 40



0, 77, 148



0, 85, 207

Sweetspot

The Sweet Spot groups the original color and five complimentary colors.



213, 75, 115



255, 207, 221



172, 75, 213



128, 98, 107



0, 0, 0



128, 128, 128

Same Dimension

The Same Dimension uses a secret algorithm to generate beautiful new colors.



213, 75, 115



255, 56, 114



213, 110, 75



107, 96, 99



171, 0, 50



43, 0, 13

Inverse Universe

The Inverse Universe completely reimagines the original color for something new.



213, 75, 115



255, 56, 114



75, 136, 213



107, 96, 99



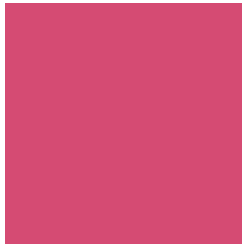
171, 0, 50



43, 0, 13

Previews

White Background



This preview shows how the RYB color 213, 75, 115 looks on a white background.

Color Contrast Check

Large Text (above 18pt) WCAG AA ✓ Pass

Any Text WCAG AA ✗ Fail

Large Text (above 18pt) WCAG AAA ✗ Fail

Any Text WCAG AAA ✗ Fail

Black Background



This preview shows how the RYB color 213, 75, 115 looks on a black background.

Color Contrast Check

Large Text (above 18pt) WCAG AA ✓ Pass

Any Text WCAG AA ✓ Pass

Large Text (above 18pt) WCAG AAA ✓ Pass

Any Text WCAG AAA × Fail

If you want to check with other color combinations, try the [Color Contrast Checker](#).

RYB 213, 75, 115 Background



This preview shows how black text looks on a background with the RYB color 213, 75, 115.



This preview shows how white text looks on a background with the RYB color 213, 75, 115.

Color Blindness Simulation

Color vision deficiency is a very complex topic, and I could not describe the different causes any better than Wikipedia does, so if you want to learn more, you should check out their [article about color blindness](#).

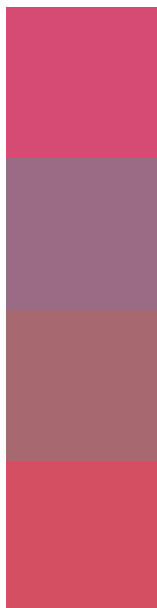
Dichromacy





Tritanopia
211, 81, 86

Trichromacy



Original Color

213, 75, 115

Protanomaly

155, 106, 133

Deuteranomaly

168, 104, 111

Tritanomaly

212, 79, 97

Monochromacy



Original Color

213, 75, 115

Achromatopsia

121, 121, 121

Achromatomaly

154, 104, 119

CSS Examples

Text

The CSS property to change the color of the text to RYB 213, 75, 115 is called "color". The color property can be set on classes, ids or directly on the HTML element.

This example shows how text in the color `rgb(213, 75, 115)` looks like.

```
.text, #text, p{  
    color:rgb(213, 75, 115)  
}
```

If you want to add a text shadow in that color use the text-shadow property, you can generate a text shadow directly with our [CSS Text Shadow Generator](#).

Here you see how black text with a 4 pixel rgb(213, 75, 115) colored shadow looks like.

```
.shadow{ text-shadow: 4px 4px 2px rgb(213, 75, 115) }
```

Border

The CSS property to change the border of an element to RYB 213, 75, 115 is called "border". The border property can be set on classes, ids or directly on the HTML element.

This example shows the color as border, it can be applied via the CSS property "border" or "border-color".

```
.border, #border, table{ border:4px solid rgb(213, 75, 115) }
```

If only the border color should be changed use the property `border-color`.

```
.border{ border-color:rgb(213, 75, 115) }
```

If you want to add a box shadow in that color use:

Here you see how a box with a 4 pixel `rgb(213, 75, 115)` colored shadow looks like.

```
.boxshadow{ -moz-box-shadow:4px 4px 4px  
4px rgb(213, 75, 115); -webkit-box-  
shadow:4px 4px 4px 4px rgb(213, 75, 115);  
box-shadow:4px 4px 4px 4px rgb(213, 75,  
115) }
```

Background

The CSS property to change the background color of an element to RGB 213, 75, 115 is called "background".

The background property can be set on classes, ids or directly on the HTML element.

```
.background, #background, body{  
background: rgb(213, 75, 115) }
```

If only the background color should be changed can be used:

```
.background{ background-color: rgb(213, 75,  
115) }
```

This example shows the color as background, it is applied via the CSS property "background".

To optimize and compress your CSS code, you can use our [online CSS compressor and optimizer](#) based on csstidy. If you want to create a linear or radial gradient as background or border, check our [CSS Gradient Generator](#).

Hey! You found this booklet interesting? Support Converting Colors with the new Membership Option!

The pro membership hides all ads, plus gives you double the colors in the color bucket, and more awesome pro features!

[Learn more, Memberships starting at \\$2.50/m!](#)

**Follow me
on Twitter!**

@ConvertingColor