

# Converting Colors

`RYB(214, 169, 172)`

Have a look what the booklet for RYB(214, 169, 172) contains.

<b>RYB(214, 169, 172)</b> .....	3
<b><i>Conversions</i></b> .....	4
<b><i>Details</i></b> .....	6
<b><i>Harmonies</i></b> .....	11
<b><i>Previews</i></b> .....	23
<b><i>Color Blindness Simulation</i></b> .....	26
<b><i>CSS Examples</i></b> .....	29

# Color

**R<sub>Y</sub>B(214, 169, 172)**

# Conversions

## Conversions Part 1

<b>Format</b>	<b>Color</b>
Hex	D6A9AC
RGB	214, 169, 172
RGB Percent	84%, 66%, 67%
CMY	0.1608, 0.3373, 0.3255
CMYK	0.00, 0.21, 0.20, 0.16
HSL	356°, 35%, 75%
HSV	356°, 21%, 84%
XYZ	49.3659, 45.6506, 45.2393
YIQ	182.7970, 25.8570, 10.4730

# Conversions

## Conversions Part 2

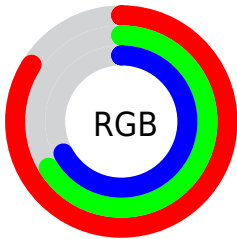
Format	Color
<a href="#">RYB</a>	<a href="#">214, 169, 172</a>
Decimal	<a href="#">14068140</a>
<a href="#">CIELab</a>	<a href="#">73.32, 16.92, 4.76</a>
<a href="#">CIElCh</a>	<a href="#">73, 17.578, 15.706</a>
<a href="#">Yxy</a>	<a href="#">45.6506, 0.3520, 0.3255</a>
<a href="#">Android (android.graphics.Color)</a>	<a href="#">4292258220 (0xFFD6A9AC)</a>
<a href="#">YUV</a>	<a href="#">182.7970, -5.3229, 27.3650</a>
<a href="#">Hunter-Lab</a>	<a href="#">67.5653, 12.1802, 7.5972</a>

# Details

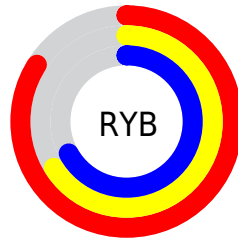
The RYB color **214, 169, 172** is a light color, and the websafe version is hex **CC9999**. A complement of this color would be **169, 192, 214**, and the grayscale version is **183, 183, 183**.

A 20% lighter version of the original color is **255, 224, 227**, and **159, 117, 120** is the 20% darker color. If you saturate the color by 10%, you get **214, 148, 152**, and if you desaturate by 10%, it is **214, 190, 192**.

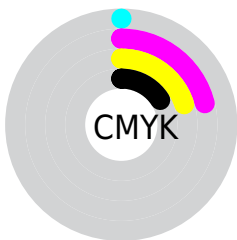
# Distribution



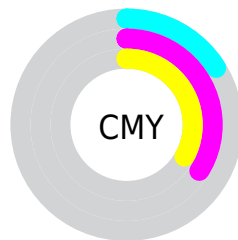
- Red (84%)
- Green (66%)
- Blue (67%)



- Red (84%)
- Yellow (66%)
- Blue (67%)



- Cyan (0%)
- Magenta (21%)
- Yellow (20%)
- Black (16%)




- Cyan (16%)
- Magenta (34%)
- Yellow (33%)

# Brightness & Saturation Gradients

These gradients show how the RYB color 214, 169, 172 changes by changing the brightness by 10 percent. The first figure shows a shift by +10% for each color and the second figure -10%.

Similar to the brightness gradients but the following saturation gradients show a change of the RYB color 214, 169, 172 by changing the saturation by 10% instead.




 214, 169, 172

255, 255, 255

 255, 224, 227

 255, 253, 255


 214, 169, 172

 186, 142, 145

 159, 117, 120

 132, 92, 95


 106, 68, 71


 81, 45, 49


 57, 24, 28

 37, 0, 1


 0, 0, 0

 214, 169, 172


 214, 169, 172

 214, 148, 152


 214, 190, 192

 214, 126, 132

 214, 212, 212

 214, 105, 112

 214, 224, 233


 214, 83, 92

 214, 235, 255

 214, 62, 72

 214, 235, 255

 214, 41, 52

 214, 19, 32

 214, 0, 14

# Harmonies

## Analogous

The Analogous color harmony consists of three colors that are next to each other on the color wheel.



208, 170, 188



214, 169, 172



211, 177, 158

# Triad

The Triadic color harmony groups three colors that are evenly spaced from another and form a triangle on the color wheel.



214, 169, 172



157, 186, 178



153, 173, 211

# Complementary

The Complementary color scheme is a pair of colors which are on the opposite of each other on the color wheel.



214, 169, 172



169, 192, 214

# Split Complementary

Split-complementary colors differ from the complementary color scheme. The scheme consists of three colors, the original color and two neighbors of the complement color.



140, 167, 202



214, 169, 172



149, 174, 189

# Square

The Square scheme is like the rectangle color scheme, but the four colors are evenly spaced on the color wheel.



214, 169, 172



151, 184, 149



138, 164, 189



173, 178, 211

# Rectangle

The Rectangle color scheme consists of four colors that form a rectangle on the color wheel.



214, 169, 172



204, 195, 151



138, 164, 189



147, 171, 209



# Sweetspot

The Sweet Spot groups the original color and five complimentary colors.



214, 169, 172



255, 240, 241



211, 169, 214



128, 119, 119



0, 0, 0



128, 128, 128



# Same Dimension

The Same Dimension uses a secret algorithm to generate beautiful new colors.



214, 169, 172



255, 191, 195



214, 205, 169



107, 96, 97



171, 0, 11



43, 0, 3



# Inverse Universe

The Inverse Universe completely reimagines the original color for something new.



214, 169, 172



255, 191, 195



169, 185, 214



107, 96, 97



171, 0, 11

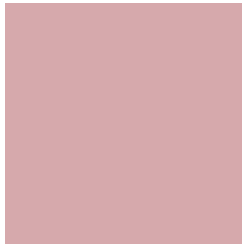


43, 0, 3



# Previews

## White Background



This preview shows how the RYB color 214, 169, 172 looks on a white background.

## Color Contrast Check

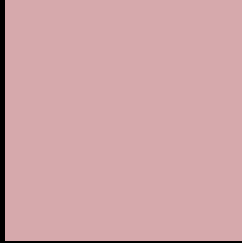
Large Text (above 18pt) WCAG AA × Fail

Any Text WCAG AA × Fail

Large Text (above 18pt) WCAG AAA × Fail

Any Text WCAG AAA × Fail

# Black Background



This preview shows how the RYB color 214, 169, 172 looks on a black background.

## Color Contrast Check

Large Text (above 18pt) WCAG AA ✓ Pass

Any Text WCAG AA ✓ Pass

Large Text (above 18pt) WCAG AAA ✓ Pass

Any Text WCAG AAA ✓ Pass

If you want to check with other color combinations, try the [Color Contrast Checker](#).



## RYP 214, 169, 172 Background



This preview shows how black text looks on a background with the RYB color 214, 169, 172.



This preview shows how white text looks on a background with the RYB color 214, 169, 172.

# Color Blindness Simulation

Color vision deficiency is a very complex topic, and I could not describe the different causes any better than Wikipedia does, so if you want to learn more, you should check out their [article about color blindness](#).


## Dichromacy



**Original Color**  
214, 169, 172

**Protanopia**  
184, 179, 178

**Deuteranopia**  
201, 174, 171



**Tritanopia**  
215, 168, 181

# Trichromacy



**Original Color**

214, 169, 172

**Protanomaly**

195, 175, 176

**Deuteranomaly**

206, 172, 171

**Tritanomaly**

215, 168, 178

# Monochromacy



**Original Color**

214, 169, 172

**Achromatopsia**

183, 183, 183

**Achromatomaly**

194, 178, 179

# CSS Examples

## Text

The CSS property to change the color of the text to RYB 214, 169, 172 is called "color". The color property can be set on classes, ids or directly on the HTML element.

This example shows how text in the color rgb(214, 169, 172) looks like.

```
.text, #text, p{  
    color:rgb(214, 169, 172)  
}
```

If you want to add a text shadow in that color use the text-shadow property, you can generate a text shadow directly with our [CSS Text Shadow Generator](#).

Here you see how black text with a 4 pixel rgb(214, 169, 172) colored shadow looks like.

```
.shadow{ text-shadow: 4px 4px 2px rgb(214, 169, 172) }
```

## Border

The CSS property to change the border of an element to RYB 214, 169, 172 is called "border". The border property can be set on classes, ids or directly on the HTML element.

This example shows the color as border, it can be applied via the CSS property "border" or "border-color".

```
.border, #border, table{ border:4px solid rgb(214, 169, 172) }
```

If only the border color should be changed use the property `border-color`.

```
.border{ border-color:rgb(214, 169, 172) }
```

If you want to add a box shadow in that color use:

Here you see how a box with a 4 pixel `rgb(214, 169, 172)` colored shadow looks like.

```
.boxshadow{ -moz-box-shadow:4px 4px 4px  
4px rgb(214, 169, 172); -webkit-box-  
shadow:4px 4px 4px 4px rgb(214, 169, 172);  
box-shadow:4px 4px 4px 4px rgb(214, 169,  
172) }
```

# Background

The CSS property to change the background color of an element to RGB 214, 169, 172 is called "background". The background property can be set on classes, ids or directly on the HTML element.

```
.background, #background, body{  
background: rgb(214, 169, 172) }
```

If only the background color should be changed can be used:

```
.background{ background-color: rgb(214,  
169, 172) }
```

This example shows the color as background, it is applied via the CSS property "background".

To optimize and compress your CSS code, you can use our [online CSS compressor and optimizer](#) based on csstidy. If you want to create a linear or radial gradient as background or border, check our [CSS Gradient Generator](#).



Hey! You found this booklet interesting? Support Converting Colors with the new Membership Option!

The pro membership hides all ads, plus gives you double the colors in the color bucket, and more awesome pro features!

**[Learn more, Memberships starting at \\$2.50/m!](#)**

**Follow me  
on Twitter!**

@ConvertingColor