

Converting Colors

`RYB(214, 177, 181)`

Have a look what the booklet for
RYB(214, 177, 181) contains.

RYB(214, 177, 181)	3
<i>Conversions</i>	4
<i>Details</i>	6
<i>Harmonies</i>	11
<i>Previews</i>	23
<i>Color Blindness Simulation</i>	26
<i>CSS Examples</i>	29

Color

R_YB(214, 177, 181)

Conversions

Conversions Part 1

Format	Color
Hex	D6B1B5
RGB	214, 177, 181
RGB Percent	84%, 69%, 71%
CMY	0.1608, 0.3059, 0.2902
CMYK	0.00, 0.17, 0.15, 0.16
HSL	354°, 31%, 77%
HSV	354°, 17%, 84%
XYZ	51.7942, 49.0766, 50.4589
YIQ	188.5190, 20.7680, 9.0880

Conversions

Conversions Part 2

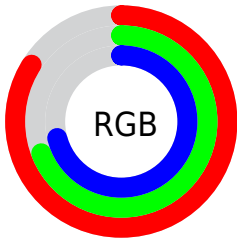
Format	Color
R _Y B	214, 177, 181
Decimal	14070197
CIE Lab	75.50, 14.01, 2.99
CIE LCh	75, 14.321, 12.034
Yxy	49.0766, 0.3423, 0.3243
Android (android.graphics.Color)	4292260277 (0xFFD6B1B5)
YUV	188.5190, -3.7069, 22.3468
Hunter-Lab	70.0547, 9.3763, 6.3329

Details

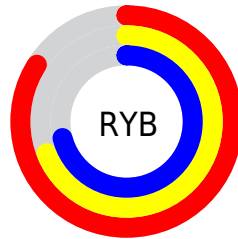
The RYB color **214, 177, 181** is a light color, and the websafe version is hex **CC9999**. A complement of this color would be **177, 197, 214**, and the grayscale version is **189, 189, 189**.

A 20% lighter version of the original color is **255, 233, 237**, and **159, 124, 128** is the 20% darker color. If you saturate the color by 10%, you get **214, 156, 162**, and if you desaturate by 10%, it is **214, 198, 200**.

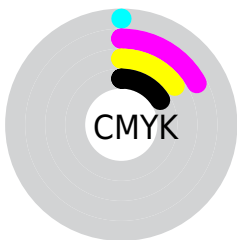
Distribution



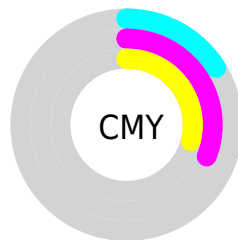
- Red (84%)
- Green (69%)
- Blue (71%)



- Red (84%)
- Yellow (69%)
- Blue (71%)



- Cyan (0%)
- Magenta (17%)
- Yellow (15%)
- Black (16%)



- Cyan (16%)
- Magenta (31%)
- Yellow (29%)

Brightness & Saturation Gradients

These gradients show how the RYB color 214, 177, 181 changes by changing the brightness by 10 percent. The first figure shows a shift by +10% for each color and the second figure -10%.


Similar to the brightness gradients but the following saturation gradients show a change of the RYB color 214, 177, 181 by changing the saturation by 10% instead.

 214, 177, 181

255, 255, 255

 255, 233, 237

 214, 177, 181

 186, 150, 154

 159, 124, 128

 132, 99, 103

 107, 75, 79


 82, 52, 56


 58, 31, 35

 37, 9, 13


 0, 0, 0

 214, 177, 181


 214, 177, 181

 214, 156, 162

 214, 198, 200

 214, 134, 143

 214, 217, 220


 214, 113, 124


 214, 228, 241


 214, 91, 105

 214, 235, 255

 214, 70, 86

 214, 49, 66

 214, 27, 47

 214, 6, 28

 214, 0, 23

Harmonies

Analogous

The Analogous color harmony consists of three colors that are next to each other on the color wheel.



208, 178, 194



214, 177, 181



213, 182, 169

Triad

The Triadic color harmony groups three colors that are evenly spaced from another and form a triangle on the color wheel.



214, 177, 181



166, 191, 181



163, 180, 211

Complementary

The Complementary color scheme is a pair of colors which are on the opposite of each other on the color wheel.



214, 177, 181



177, 197, 214

Split Complementary

Split-complementary colors differ from the complementary color scheme. The scheme consists of three colors, the original color and two neighbors of the complement color.



153, 175, 203



214, 177, 181



162, 183, 193

Square

The Square scheme is like the rectangle color scheme, but the four colors are evenly spaced on the color wheel.



214, 177, 181



165, 191, 160



153, 174, 194



178, 184, 212

Rectangle

The Rectangle color scheme consists of four colors that form a rectangle on the color wheel.



214, 177, 181



208, 193, 163



153, 174, 194



159, 179, 209

Sweetspot

The Sweet Spot groups the original color and five complimentary colors.



214, 177, 181



255, 242, 244



210, 177, 214



128, 120, 121



0, 0, 0



128, 128, 128

Same Dimension

The Same Dimension uses a secret algorithm to generate beautiful new colors.



214, 177, 181



255, 201, 207



214, 200, 177



107, 96, 98



171, 0, 18



43, 0, 5

Inverse Universe

The Inverse Universe completely reimagines the original color for something new.



214, 177, 181



255, 201, 207



177, 191, 214



107, 96, 98



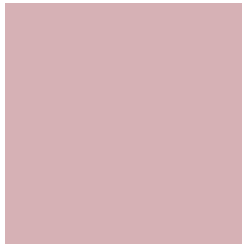
171, 0, 18



43, 0, 5

Previews

White Background



This preview shows how the RYB color 214, 177, 181 looks on a white background.

Color Contrast Check

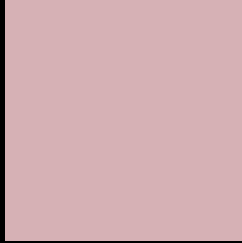
Large Text (above 18pt) WCAG AA × Fail

Any Text WCAG AA × Fail

Large Text (above 18pt) WCAG AAA × Fail

Any Text WCAG AAA × Fail

Black Background



This preview shows how the RYB color 214, 177, 181 looks on a black background.

Color Contrast Check

Large Text (above 18pt) WCAG AA ✓ Pass

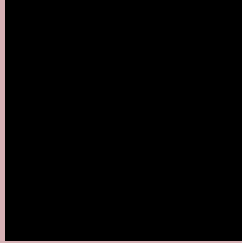
Any Text WCAG AA ✓ Pass

Large Text (above 18pt) WCAG AAA ✓ Pass

Any Text WCAG AAA ✓ Pass

If you want to check with other color combinations, try the [Color Contrast Checker](#).

RYP 214, 177, 181 Background



This preview shows how black text looks on a background with the RYP color 214, 177, 181.



This preview shows how white text looks on a background with the RYP color 214, 177, 181.

Color Blindness Simulation

Color vision deficiency is a very complex topic, and I could not describe the different causes any better than Wikipedia does, so if you want to learn more, you should check out their [article about color blindness](#).


Dichromacy



Original Color
214, 177, 181

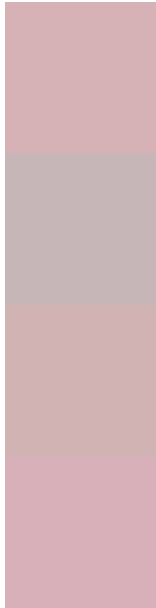
Protanopia
189, 185, 186

Deuteranopia
206, 180, 180



Tritanopia
215, 176, 189

Trichromacy



Original Color

214, 177, 181

Protanomaly

198, 182, 184

Deuteranomaly

209, 179, 180

Tritanomaly

215, 176, 186

Monochromacy



Original Color

214, 177, 181

Achromatopsia

189, 189, 189

Achromatomaly

198, 185, 186

CSS Examples

Text

The CSS property to change the color of the text to RGB 214, 177, 181 is called "color". The color property can be set on classes, ids or directly on the HTML element.

This example shows how text in the color rgb(214, 177, 181) looks like.

```
.text, #text, p{  
    color:rgb(214, 177, 181)  
}
```

If you want to add a text shadow in that color use the text-shadow property, you can generate a text shadow directly with our [CSS Text Shadow Generator](#).

Here you see how black text with a 4 pixel rgb(214, 177, 181) colored shadow looks like.

```
.shadow{ text-shadow: 4px 4px 2px rgb(214, 177, 181) }
```

Border

The CSS property to change the border of an element to RYB 214, 177, 181 is called "border". The border property can be set on classes, ids or directly on the HTML element.

This example shows the color as border, it can be applied via the CSS property "border" or "border-color".

```
.border, #border, table{ border:4px solid rgb(214, 177, 181) }
```

If only the border color should be changed use the property `border-color`.

```
.border{ border-color:rgb(214, 177, 181) }
```

If you want to add a box shadow in that color use:

Here you see how a box with a 4 pixel `rgb(214, 177, 181)` colored shadow looks like.

```
.boxshadow{ -moz-box-shadow:4px 4px 4px  
4px rgb(214, 177, 181); -webkit-box-  
shadow:4px 4px 4px 4px rgb(214, 177, 181);  
box-shadow:4px 4px 4px 4px rgb(214, 177,  
181) }
```

Background

The CSS property to change the background color of an element to RGB 214, 177, 181 is called "background". The background property can be set on classes, ids or directly on the HTML element.

```
.background, #background, body{  
background: rgb(214, 177, 181) }
```

If only the background color should be changed can be used:

```
.background{ background-color: rgb(214,  
177, 181) }
```

This example shows the color as background, it is applied via the CSS property "background".

To optimize and compress your CSS code, you can use our [online CSS compressor and optimizer](#) based on csstidy. If you want to create a linear or radial gradient as background or border, check our [CSS Gradient Generator](#).

Hey! You found this booklet interesting? Support Converting Colors with the new Membership Option!

The pro membership hides all ads, plus gives you double the colors in the color bucket, and more awesome pro features!

[Learn more, Memberships starting at \\$2.50/m!](#)

**Follow me
on Twitter!**

@ConvertingColor