

Converting Colors

`RYB(214, 184, 181)`

Have a look what the booklet for
RYB(214, 184, 181) contains.

RYB(214, 184, 181)	3
<i>Conversions</i>	4
<i>Details</i>	6
<i>Harmonies</i>	11
<i>Previews</i>	23
<i>Color Blindness Simulation</i>	26
<i>CSS Examples</i>	29

Color

R_YB(214, 184, 181)

Conversions

Conversions Part 1

Format	Color
Hex	D6B8B5
RGB	214, 184, 181
RGB Percent	84%, 72%, 71%
CMY	0.1608, 0.2794, 0.2902
CMYK	0.00, 0.14, 0.15, 0.16
HSL	5°, 29%, 77%
HSV	5°, 15%, 84%
XYZ	53.1606, 51.8095, 50.9144
YIQ	192.6280, 18.8430, 5.4270

Conversions

Conversions Part 2

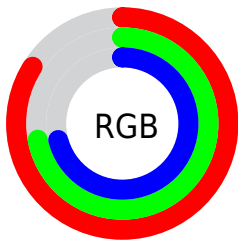
Format	Color
RYB	214, 184, 181
Decimal	14071989
CIELab	77.17, 10.38, 5.40
CIELCh	77, 11.697, 27.478
Yxy	51.8095, 0.3410, 0.3324
Android (android.graphics.Color)	4292262069 (0xFFD6B8B5)
YUV	192.6280, -5.7326, 18.7432
Hunter-Lab	71.9788, 5.8699, 8.4462

Details

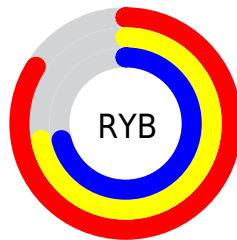
The RYB color **214, 184, 181** is a light color, and the websafe version is hex **FFCCCC**. A complement of this color would be **181, 197, 214**, and the grayscale version is **193, 193, 193**.

A 20% lighter version of the original color is **255, 241, 237**, and **159, 131, 128** is the 20% darker color. If you saturate the color by 10%, you get **214, 164, 160**, and if you desaturate by 10%, it is **214, 203, 202**.

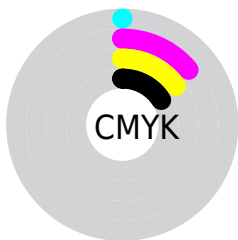
Distribution



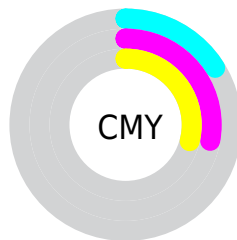
- Red (84%)
- Green (72%)
- Blue (71%)



- Red (84%)
- Yellow (72%)
- Blue (71%)



- Cyan (0%)
- Magenta (14%)
- Yellow (15%)
- Black (16%)



- Cyan (16%)
- Magenta (28%)
- Yellow (29%)

Brightness & Saturation Gradients

These gradients show how the RYB color 214, 184, 181 changes by changing the brightness by 10 percent. The first figure shows a shift by +10% for each color and the second figure -10%.


Similar to the brightness gradients but the following saturation gradients show a change of the RYB color 214, 184, 181 by changing the saturation by 10% instead.

 214, 184, 181

255, 255, 255

 255, 241, 237

 214, 184, 181

 186, 157, 154

 159, 131, 128

 133, 106, 103


 107, 81, 79

 82, 58, 56


 59, 36, 35

 37, 16, 13

 0, 0, 0

 214, 184, 181


 214, 184, 181

 214, 164, 160


 214, 203, 202

 214, 146, 138


 214, 219, 224


 214, 126, 117


 214, 229, 245

 214, 106, 95

 214, 235, 255

 214, 87, 74

 214, 67, 53

 214, 47, 31

 214, 29, 10

 214, 20, 0

Harmonies

Analogous

The Analogous color harmony consists of three colors that are next to each other on the color wheel.



212, 183, 192



214, 184, 181



210, 193, 173

Triad

The Triadic color harmony groups three colors that are evenly spaced from another and form a triangle on the color wheel.



214, 184, 181



176, 193, 196



178, 188, 212

Complementary

The Complementary color scheme is a pair of colors which are on the opposite of each other on the color wheel.



214, 184, 181



181, 197, 214

Split Complementary

Split-complementary colors differ from the complementary color scheme. The scheme consists of three colors, the original color and two neighbors of the complement color.



168, 184, 208



214, 184, 181



167, 184, 197

Square

The Square scheme is like the rectangle color scheme, but the four colors are evenly spaced on the color wheel.



214, 184, 181



171, 193, 176



163, 181, 200



192, 188, 210

Rectangle

The Rectangle color scheme consists of four colors that form a rectangle on the color wheel.



214, 184, 181



200, 204, 170



163, 181, 200



174, 187, 211

Sweetspot

The Sweet Spot groups the original color and five complimentary colors.



214, 184, 181



255, 243, 242



214, 181, 211



128, 120, 120



0, 0, 0



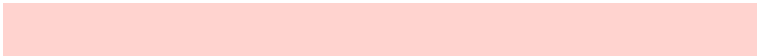
128, 128, 128

Same Dimension

The Same Dimension uses a secret algorithm to generate beautiful new colors.



214, 184, 181



255, 211, 207



205, 214, 181



107, 97, 96



171, 15, 0



43, 4, 0

Inverse Universe

The Inverse Universe completely reimagines the original color for something new.



181, 197, 214



207, 230, 255



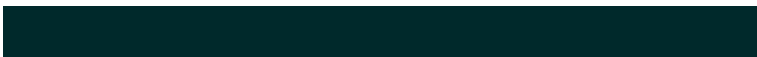
181, 191, 214



96, 101, 107



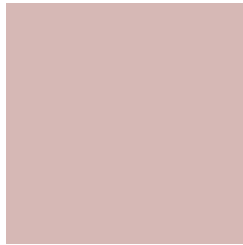
0, 82, 171



0, 21, 43

Previews

White Background



This preview shows how the RYB color 214, 184, 181 looks on a white background.

Color Contrast Check

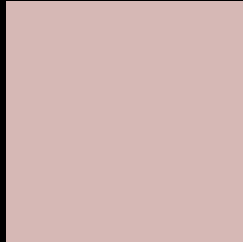
Large Text (above 18pt) WCAG AA × Fail

Any Text WCAG AA × Fail

Large Text (above 18pt) WCAG AAA × Fail

Any Text WCAG AAA × Fail

Black Background



This preview shows how the RYB color 214, 184, 181 looks on a black background.

Color Contrast Check

Large Text (above 18pt) WCAG AA ✓ Pass

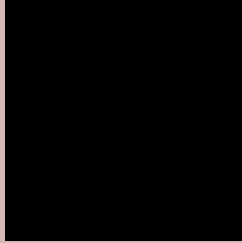
Any Text WCAG AA ✓ Pass

Large Text (above 18pt) WCAG AAA ✓ Pass

Any Text WCAG AAA ✓ Pass

If you want to check with other color combinations, try the [Color Contrast Checker](#).

RYB 214, 184, 181 Background



This preview shows how black text looks on a background with the RYB color 214, 184, 181.



This preview shows how white text looks on a background with the RYB color 214, 184, 181.

Color Blindness Simulation

Color vision deficiency is a very complex topic, and I could not describe the different causes any better than Wikipedia does, so if you want to learn more, you should check out their [article about color blindness](#).


Dichromacy



Original Color
214, 184, 181

Protanopia
196, 196, 184

Deuteranopia
213, 184, 181



Tritanopia
216, 181, 196

Trichromacy



Original Color

214, 184, 181

Protanomaly

203, 190, 183

Deuteranomaly

213, 184, 181

Tritanomaly

215, 182, 191

Monochromacy



Original Color

214, 184, 181

Achromatopsia

192, 192, 192

Achromatomaly

200, 189, 188

CSS Examples

Text

The CSS property to change the color of the text to RYB 214, 184, 181 is called "color". The color property can be set on classes, ids or directly on the HTML element.

This example shows how text in the color rgb(214, 184, 181) looks like.

```
.text, #text, p{  
    color:rgb(214, 184, 181)  
}
```

If you want to add a text shadow in that color use the text-shadow property, you can generate a text shadow directly with our [CSS Text Shadow Generator](#).

Here you see how black text with a 4 pixel rgb(214, 184, 181) colored shadow looks like.

```
.shadow{ text-shadow: 4px 4px 2px rgb(214, 184, 181) }
```

Border

The CSS property to change the border of an element to RYB 214, 184, 181 is called "border". The border property can be set on classes, ids or directly on the HTML element.

This example shows the color as border, it can be applied via the CSS property "border" or "border-color".

```
.border, #border, table{ border:4px solid rgb(214, 184, 181) }
```

If only the border color should be changed use the property `border-color`.

```
.border{ border-color:rgb(214, 184, 181) }
```

If you want to add a box shadow in that color use:

Here you see how a box with a 4 pixel `rgb(214, 184, 181)` colored shadow looks like.

```
.boxshadow{ -moz-box-shadow:4px 4px 4px  
4px rgb(214, 184, 181); -webkit-box-  
shadow:4px 4px 4px 4px rgb(214, 184, 181);  
box-shadow:4px 4px 4px 4px rgb(214, 184,  
181) }
```

Background

The CSS property to change the background color of an element to RYB 214, 184, 181 is called "background". The background property can be set on classes, ids or directly on the HTML element.

```
.background, #background, body{  
background: rgb(214, 184, 181) }
```

If only the background color should be changed can be used:

```
.background{ background-color: rgb(214,  
184, 181) }
```

This example shows the color as background, it is applied via the CSS property "background".

To optimize and compress your CSS code, you can use our [online CSS compressor and optimizer](#) based on csstidy. If you want to create a linear or radial gradient as background or border, check our [CSS Gradient Generator](#).

Hey! You found this booklet interesting? Support Converting Colors with the new Membership Option!

The pro membership hides all ads, plus gives you double the colors in the color bucket, and more awesome pro features!

[Learn more, Memberships starting at \\$2.50/m!](#)

**Follow me
on Twitter!**

@ConvertingColor