

Converting Colors

`RYB(215, 186, 197)`

Have a look what the booklet for RYB(215, 186, 197) contains.

RYB(215, 186, 197)	3
<i>Conversions</i>	4
<i>Details</i>	6
<i>Harmonies</i>	11
<i>Previews</i>	23
<i>Color Blindness Simulation</i>	26
<i>CSS Examples</i>	29

Color

R_YB(215, 186, 197)

Conversions

Conversions Part 1

Format	Color
Hex	D7BAC5
RGB	215, 186, 197
RGB Percent	84%, 73%, 77%
CMY	0.1569, 0.2706, 0.2275
CMYK	0.00, 0.13, 0.08, 0.16
HSL	337°, 27%, 79%
HSV	337°, 13%, 84%
XYZ	55.6613, 53.5961, 60.2347
YIQ	195.9250, 13.7530, 9.5690

Conversions

Conversions Part 2

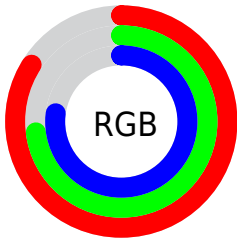
Format	Color
R _{YB}	215, 186, 197
Decimal	14138053
CIE Lab	78.23, 12.17, -1.72
CIE LCh	78, 12.296, 351.940
Yxy	53.5961, 0.3284, 0.3162
Android (android.graphics.Color)	4292328133 (0xFFD7BAC5)
YUV	195.9250, 0.5300, 16.7288
Hunter-Lab	73.2094, 7.5977, 2.4643

Details

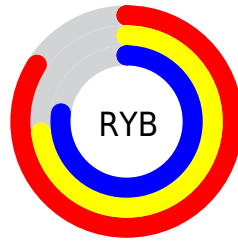
The RYB color **215, 186, 197** is a light color, and the websafe version is hex **CCCCCC**. A complement of this color would be **186, 204, 215**, and the grayscale version is **196, 196, 196**.

A 20% lighter version of the original color is **255, 242, 254**, and **160, 133, 143** is the 20% darker color. If you saturate the color by 10%, you get **215, 165, 184**, and if you desaturate by 10%, it is **215, 208, 210**.

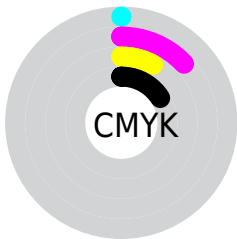
Distribution



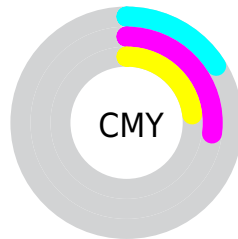
- Red (84%)
- Green (73%)
- Blue (77%)



- Red (84%)
- Yellow (73%)
- Blue (77%)



- Cyan (0%)
- Magenta (13%)
- Yellow (8%)
- Black (16%)



- Cyan (16%)
- Magenta (27%)
- Yellow (23%)

Brightness & Saturation Gradients

These gradients show how the RYB color 215, 186, 197 changes by changing the brightness by 10 percent. The first figure shows a shift by +10% for each color and the second figure -10%.

Similar to the brightness gradients but the following saturation gradients show a change of the RYB color 215, 186, 197 by changing the saturation by 10% instead.

 215, 186, 197


255, 255, 255

 255, 242, 254

 215, 186, 197

 187, 159, 170

 160, 133, 143

 134, 108, 118

 108, 83, 93

 84, 60, 70

 60, 38, 47

 38, 18, 27

 12, 0, 0

 0, 0, 0

■ 215, 186, 197

■ 215, 186, 197

■ 215, 165, 184

■ 215, 208, 210

■ 215, 143, 170

■ 215, 224, 229

■ 215, 122, 157

■ 215, 237, 251

■ 215, 100, 144

■ 215, 236, 255

■ 215, 78, 130

■ 215, 235, 255

■ 215, 57, 117

■ 215, 36, 104

■ 215, 14, 90

■ 215, 0, 82

Harmonies

Analogous

The Analogous color harmony consists of three colors that are next to each other on the color wheel.



206, 188, 208



215, 186, 197



218, 186, 185

Triad

The Triadic color harmony groups three colors that are evenly spaced from another and form a triangle on the color wheel.



215, 186, 197



172, 195, 173



168, 186, 211

Complementary

The Complementary color scheme is a pair of colors which are on the opposite of each other on the color wheel.



215, 186, 197



186, 204, 215

Split Complementary

Split-complementary colors differ from the complementary color scheme. The scheme consists of three colors, the original color and two neighbors of the complement color.



165, 183, 202



215, 186, 197



179, 198, 196

Square

The Square scheme is like the rectangle color scheme, but the four colors are evenly spaced on the color wheel.



215, 186, 197



194, 206, 171



170, 188, 200



178, 190, 216

Rectangle

The Rectangle color scheme consists of four colors that form a rectangle on the color wheel.



215, 186, 197



217, 189, 179



170, 188, 200



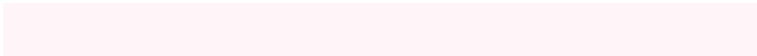
166, 184, 208

Sweetspot

The Sweet Spot groups the original color and five complimentary colors.



215, 186, 197



255, 245, 249



204, 186, 215



128, 121, 124



0, 0, 0



128, 128, 128

Same Dimension

The Same Dimension uses a secret algorithm to generate beautiful new colors.



215, 186, 197



255, 214, 230



215, 189, 186



107, 96, 100



171, 0, 65



43, 0, 16

Inverse Universe

The Inverse Universe completely reimagines the original color for something new.



215, 186, 197



255, 214, 230



186, 200, 215



107, 96, 100



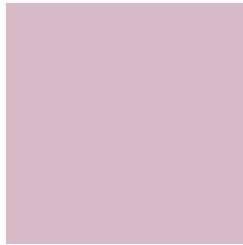
171, 0, 65



43, 0, 16

Previews

White Background



This preview shows how the RYB color 215, 186, 197 looks on a white background.

Color Contrast Check

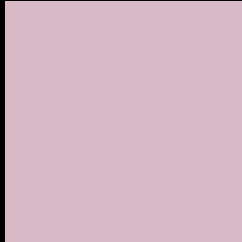
Large Text (above 18pt) WCAG AA × Fail

Any Text WCAG AA × Fail

Large Text (above 18pt) WCAG AAA × Fail

Any Text WCAG AAA × Fail

Black Background



This preview shows how the RYB color 215, 186, 197 looks on a black background.

Color Contrast Check

Large Text (above 18pt) WCAG AA ✓ Pass

Any Text WCAG AA ✓ Pass

Large Text (above 18pt) WCAG AAA ✓ Pass

Any Text WCAG AAA ✓ Pass

If you want to check with other color combinations, try the [Color Contrast Checker](#).

RYB 215, 186, 197 Background



This preview shows how black text looks on a background with the RYB color 215, 186, 197.



This preview shows how white text looks on a background with the RYB color 215, 186, 197.

Color Blindness Simulation

Color vision deficiency is a very complex topic, and I could not describe the different causes any better than Wikipedia does, so if you want to learn more, you should check out their [article about color blindness](#).


Dichromacy



Original Color
215, 186, 197

Protanopia
195, 193, 201

Deuteranopia
211, 188, 197



Tritanopia
215, 186, 200

Trichromacy



Original Color
215, 186, 197

Protanomaly
202, 190, 200

Deuteranomaly
212, 187, 197

Tritanomaly
215, 186, 199

Monochromacy



Original Color
215, 186, 197

Achromatopsia
196, 196, 196

Achromatomaly
203, 192, 196

CSS Examples

Text

The CSS property to change the color of the text to RYB 215, 186, 197 is called "color". The color property can be set on classes, ids or directly on the HTML element.

This example shows how text in the color rgb(215, 186, 197) looks like.

```
.text, #text, p{  
    color:rgb(215, 186, 197)  
}
```

If you want to add a text shadow in that color use the text-shadow property, you can generate a text shadow directly with our [CSS Text Shadow Generator](#).

Here you see how black text with a 4 pixel rgb(215, 186, 197) colored shadow looks like.

```
.shadow{ text-shadow: 4px 4px 2px rgb(215, 186, 197) }
```

Border

The CSS property to change the border of an element to RYB 215, 186, 197 is called "border". The border property can be set on classes, ids or directly on the HTML element.

This example shows the color as border, it can be applied via the CSS property "border" or "border-color".

```
.border, #border, table{ border:4px solid rgb(215, 186, 197) }
```

If only the border color should be changed use the property `border-color`.

```
.border{ border-color:rgb(215, 186, 197) }
```

If you want to add a box shadow in that color use:

Here you see how a box with a 4 pixel `rgb(215, 186, 197)` colored shadow looks like.

```
.boxshadow{ -moz-box-shadow:4px 4px 4px  
4px rgb(215, 186, 197); -webkit-box-  
shadow:4px 4px 4px 4px rgb(215, 186, 197);  
box-shadow:4px 4px 4px 4px rgb(215, 186,  
197) }
```

Background

The CSS property to change the background color of an element to RGB 215, 186, 197 is called "background". The background property can be set on classes, ids or directly on the HTML element.

```
.background, #background, body{  
background: rgb(215, 186, 197) }
```

If only the background color should be changed can be used:

```
.background{ background-color: rgb(215,  
186, 197) }
```

This example shows the color as background, it is applied via the CSS property "background".

To optimize and compress your CSS code, you can use our [online CSS compressor and optimizer](#) based on csstidy. If you want to create a linear or radial gradient as background or border, check our [CSS Gradient Generator](#).

Hey! You found this booklet interesting? Support Converting Colors with the new Membership Option!

The pro membership hides all ads, plus gives you double the colors in the color bucket, and more awesome pro features!

[Learn more, Memberships starting at \\$2.50/m!](#)

**Follow me
on Twitter!**

@ConvertingColor