

Converting Colors

`RYB(215, 201, 191)`

Have a look what the booklet for
RYB(215, 201, 191) contains.

RYB(215, 201, 191)	3
<i>Conversions</i>	4
<i>Details</i>	6
<i>Harmonies</i>	11
<i>Previews</i>	23
<i>Color Blindness Simulation</i>	26
<i>CSS Examples</i>	29

Color

R_YB(215, 201, 191)

Conversions

Conversions Part 1

Format	Color
Hex	D7C6BF
RGB	215, 198, 191
RGB Percent	84%, 78%, 75%
CMY	0.1569, 0.2233, 0.2510
CMYK	0.00, 0.08, 0.11, 0.16
HSL	18°, 23%, 80%
HSV	18°, 11%, 84%
XYZ	57.6358, 58.6237, 57.5680
YIQ	202.2850, 12.3790, 1.4270

Conversions

Conversions Part 2

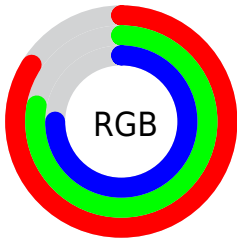
Format	Color
R _Y B	215, 201, 191
Decimal	14141119
CIE Lab	81.08, 4.74, 5.66
CIE LCh	81, 7.387, 50.065
Yxy	58.6237, 0.3316, 0.3373
Android (android.graphics.Color)	4292331199 (0xFFD7C6BF)
YUV	202.2850, -5.5635, 11.1511
Hunter-Lab	76.5661, 0.3767, 9.0178

Details

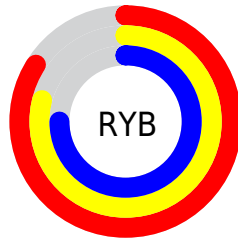
The RYB color **215, 201, 191** is a light color, and the websafe version is hex **CCCCCC**. A complement of this color would be **191, 201, 215**, and the grayscale version is **202, 202, 202**.

A 20% lighter version of the original color is **247, 255, 247**, and **160, 146, 138** is the 20% darker color. If you saturate the color by 10%, you get **215, 188, 170**, and if you desaturate by 10%, it is **215, 213, 213**.

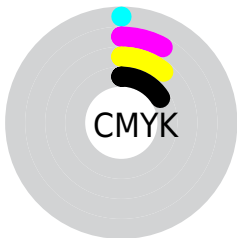
Distribution



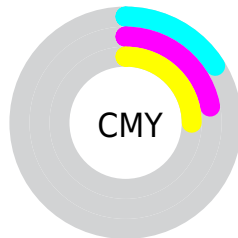
- Red (84%)
- Green (78%)
- Blue (75%)



- Red (84%)
- Yellow (79%)
- Blue (75%)



- Cyan (0%)
- Magenta (8%)
- Yellow (11%)
- Black (16%)



- Cyan (16%)
- Magenta (22%)
- Yellow (25%)

Brightness & Saturation Gradients


These gradients show how the RYB color 215, 201, 191 changes by changing the brightness by 10 percent. The first figure shows a shift by +10% for each color and the second figure -10%.

Similar to the brightness gradients but the following saturation gradients show a change of the RYB color 215, 201, 191 by changing the saturation by 10% instead.


 215, 201, 191

 215, 201, 191

255, 255, 255

 187, 174, 164


 247, 255, 247

 160, 146, 138

 134, 122, 112

 108, 97, 88

 84, 72, 65

 61, 50, 43

 39, 29, 22

 17, 0, 0

 0, 0, 0

215, 201, 191

215, 201, 191

215, 188, 170

215, 213, 213

215, 177, 148

215, 223, 234

215, 164, 127

215, 232, 255

215, 150, 105

215, 235, 255

215, 138, 84

215, 126, 62

215, 114, 40

215, 101, 19

215, 89, 0

Harmonies

Analogous

The Analogous color harmony consists of three colors that are next to each other on the color wheel.



217, 197, 197



215, 201, 191



206, 210, 188

Triad

The Triadic color harmony groups three colors that are evenly spaced from another and form a triangle on the color wheel.



215, 201, 191



188, 198, 205



200, 200, 214

Complementary

The Complementary color scheme is a pair of colors which are on the opposite of each other on the color wheel.



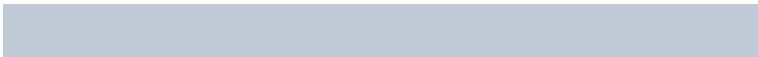
215, 201, 191



191, 201, 215

Split Complementary

Split-complementary colors differ from the complementary color scheme. The scheme consists of three colors, the original color and two neighbors of the complement color.



192, 199, 215



215, 201, 191



185, 196, 206

Square

The Square scheme is like the rectangle color scheme, but the four colors are evenly spaced on the color wheel.



215, 201, 191



192, 204, 202



186, 197, 212



208, 198, 210

Rectangle

The Rectangle color scheme consists of four colors that form a rectangle on the color wheel.



215, 201, 191



192, 205, 188



186, 197, 212



197, 200, 215

Sweetspot

The Sweet Spot groups the original color and five complimentary colors.



215, 201, 191



255, 252, 247



215, 191, 208



128, 125, 122



0, 0, 0



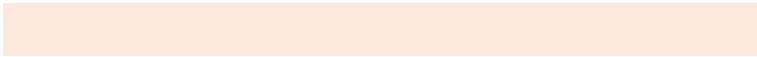
128, 128, 128

Same Dimension

The Same Dimension uses a secret algorithm to generate beautiful new colors.



215, 201, 191



255, 236, 222



197, 215, 191



107, 102, 96



171, 71, 0



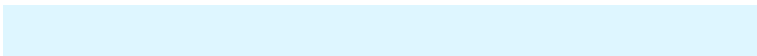
43, 19, 0

Inverse Universe

The Inverse Universe completely reimagines the original color for something new.



191, 201, 215



222, 236, 255



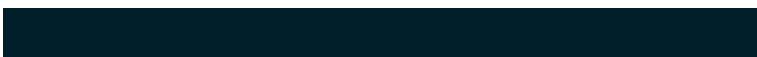
191, 195, 215



96, 101, 107



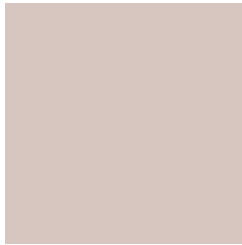
0, 71, 171



0, 18, 43

Previews

White Background



This preview shows how the RYB color 215, 201, 191 looks on a white background.

Color Contrast Check

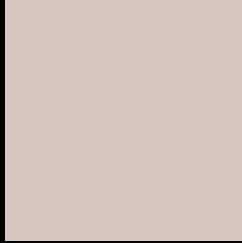
Large Text (above 18pt) WCAG AA × Fail

Any Text WCAG AA × Fail

Large Text (above 18pt) WCAG AAA × Fail

Any Text WCAG AAA × Fail

Black Background



This preview shows how the RYB color 215, 201, 191 looks on a black background.

Color Contrast Check

Large Text (above 18pt) WCAG AA ✓ Pass

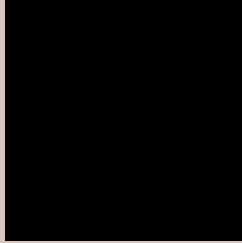
Any Text WCAG AA ✓ Pass

Large Text (above 18pt) WCAG AAA ✓ Pass

Any Text WCAG AAA ✓ Pass

If you want to check with other color combinations, try the [Color Contrast Checker](#).

RYB 215, 201, 191 Background



This preview shows how black text looks on a background with the RYB color 215, 201, 191.

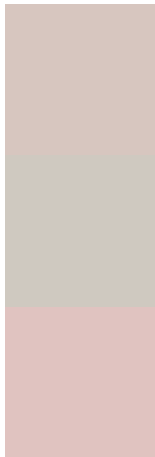


This preview shows how white text looks on a background with the RYB color 215, 201, 191.

Color Blindness Simulation

Color vision deficiency is a very complex topic, and I could not describe the different causes any better than Wikipedia does, so if you want to learn more, you should check out their [article about color blindness](#).


Dichromacy



Original Color
215, 201, 191

Protanopia
202, 207, 192

Deuteranopia
224, 195, 192



Tritanopia
218, 195, 210

Trichromacy



Original Color

215, 201, 191

Protanomaly

210, 206, 192

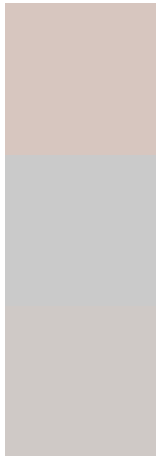
Deuteranomaly

221, 197, 192

Tritanomaly

217, 196, 203

Monochromacy



Original Color

215, 201, 191

Achromatopsia

202, 202, 202

Achromatomaly

207, 203, 198

CSS Examples

Text

The CSS property to change the color of the text to RYB 215, 201, 191 is called "color". The color property can be set on classes, ids or directly on the HTML element.

This example shows how text in the color rgb(215, 198, 191) looks like.

```
.text, #text, p{  
    color:rgb(215, 198, 191)  
}
```

If you want to add a text shadow in that color use the text-shadow property, you can generate a text shadow directly with our [CSS Text Shadow Generator](#).

Here you see how black text with a 4 pixel rgb(215, 198, 191) colored shadow looks like.

```
.shadow{ text-shadow: 4px 4px 2px rgb(215, 198, 191) }
```

Border

The CSS property to change the border of an element to RYB 215, 201, 191 is called "border". The border property can be set on classes, ids or directly on the HTML element.

This example shows the color as border, it can be applied via the CSS property "border" or "border-color".

```
.border, #border, table{ border:4px solid rgb(215, 198, 191) }
```

If only the border color should be changed use the property `border-color`.

```
.border{ border-color:rgb(215, 198, 191) }
```

If you want to add a box shadow in that color use:

Here you see how a box with a 4 pixel `rgb(215, 198, 191)` colored shadow looks like.

```
.boxshadow{ -moz-box-shadow:4px 4px 4px  
4px rgb(215, 198, 191); -webkit-box-  
shadow:4px 4px 4px 4px rgb(215, 198, 191);  
box-shadow:4px 4px 4px 4px rgb(215, 198,  
191) }
```

Background

The CSS property to change the background color of an element to RYB 215, 201, 191 is called "background". The background property can be set on classes, ids or directly on the HTML element.

```
.background, #background, body{  
background: rgb(215, 198, 191) }
```

If only the background color should be changed can be used:

```
.background{ background-color: rgb(215,  
198, 191) }
```

This example shows the color as background, it is applied via the CSS property "background".

To optimize and compress your CSS code, you can use our [online CSS compressor and optimizer](#) based on csstidy. If you want to create a linear or radial gradient as background or border, check our [CSS Gradient Generator](#).

Hey! You found this booklet interesting? Support Converting Colors with the new Membership Option!

The pro membership hides all ads, plus gives you double the colors in the color bucket, and more awesome pro features!

[Learn more, Memberships starting at \\$2.50/m!](#)

**Follow me
on Twitter!**

@ConvertingColor