

Converting Colors

`RYB(215, 93, 141)`

Have a look what the booklet for
RYB(215, 93, 141) contains.

RYB(215, 93, 141)	3
<i>Conversions</i>	4
<i>Details</i>	6
<i>Harmonies</i>	11
<i>Previews</i>	23
<i>Color Blindness Simulation</i>	26
<i>CSS Examples</i>	29

Color

`RYB(215, 93, 141)`

Conversions

Conversions Part 1

Format	Color
Hex	D75D8D
RGB	215, 93, 141
RGB Percent	84%, 36%, 55%
CMY	0.1569, 0.6353, 0.4471
CMYK	0.00, 0.57, 0.34, 0.16
HSL	336°, 60%, 60%
HSV	336°, 57%, 84%
XYZ	36.7464, 24.1989, 27.9334
YIQ	134.9500, 57.3040, 40.7920

Conversions

Conversions Part 2

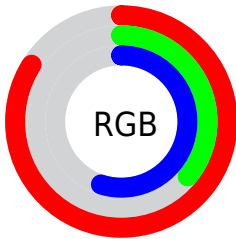
Format	Color
R _Y B	215, 93, 141
Decimal	14114189
CIE Lab	56.29, 52.67, -2.45
CIE LCh	56, 52.724, 357.336
Yxy	24.1989, 0.4134, 0.2723
Android (android.graphics.Color)	4292304269 (0xFFD75D8D)
YUV	134.9500, 2.9827, 70.2039
Hunter-Lab	49.1923, 47.2519, 0.7674

Details

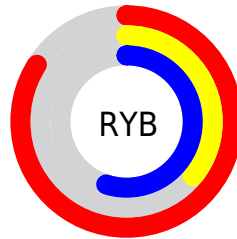
The RYB color **215, 93, 141** is a dark color, and the websafe version is hex **CC6699**. The color can be described as middle muted rose. A complement of this color would be **93, 169, 215**, and the grayscale version is **135, 135, 135**.

A 20% lighter version of the original color is **255, 148, 195**, and **157, 36, 91** is the 20% darker color. If you saturate the color by 10%, you get **215, 71, 128**, and if you desaturate by 10%, it is **215, 114, 154**.

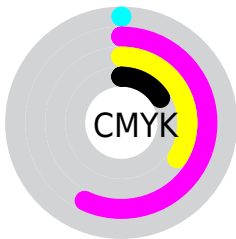
Distribution



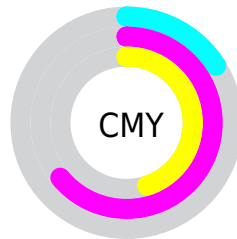
- Red (84%)
- Green (36%)
- Blue (55%)



- Red (84%)
- Yellow (36%)
- Blue (55%)



- Cyan (0%)
- Magenta (57%)
- Yellow (34%)
- Black (16%)



- Cyan (16%)
- Magenta (64%)
- Yellow (45%)

Brightness & Saturation Gradients

These gradients show how the RYB color 215, 93, 141 changes by changing the brightness by 10 percent. The first figure shows a shift by +10% for each color and the second figure -10%.

Similar to the brightness gradients but the following saturation gradients show a change of the RYB color 215, 93, 141 by changing the saturation by 10% instead.



215, 93, 141



215, 93, 141

255, 255, 255



186, 66, 116



255, 148, 195



157, 36, 91



255, 176, 222



128, 0, 68



255, 204, 251



100, 0, 46



255, 233, 255



73, 0, 25



48, 0, 2



0, 0, 0



215, 93, 141



215, 93, 141



215, 71, 128




215, 114, 154

 215, 50, 115

 215, 136, 167

 215, 28, 102

 215, 158, 180

 215, 7, 89

 215, 179, 193

 215, 0, 85

 215, 201, 206

 215, 219, 222

 215, 232, 243

 215, 238, 255

 215, 235, 255

Harmonies

Analogous

The Analogous color harmony consists of three colors that are next to each other on the color wheel.



187, 105, 185



215, 93, 141



217, 97, 96

Triad

The Triadic color harmony groups three colors that are evenly spaced from another and form a triangle on the color wheel.



215, 93, 141



47, 145, 74



0, 88, 211

Complementary

The Complementary color scheme is a pair of colors which are on the opposite of each other on the color wheel.



215, 93, 141



93, 169, 215

Split Complementary

Split-complementary colors differ from the complementary color scheme. The scheme consists of three colors, the original color and two neighbors of the complement color.



0, 83, 176



215, 93, 141



55, 131, 153

Square

The Square scheme is like the rectangle color scheme, but the four colors are evenly spaced on the color wheel.



215, 93, 141



79, 163, 36



0, 86, 157



0, 87, 227

Rectangle

The Rectangle color scheme consists of four colors that form a rectangle on the color wheel.



215, 93, 141



206, 124, 69



0, 86, 157



0, 87, 201

Sweetspot

The Sweet Spot groups the original color and five complimentary colors.



215, 93, 141



255, 212, 229



166, 93, 215



128, 102, 112



0, 0, 0



128, 128, 128

Same Dimension

The Same Dimension uses a secret algorithm to generate beautiful new colors.



215, 93, 141



255, 82, 150



215, 106, 93



107, 96, 101



171, 0, 67



43, 0, 17

Inverse Universe

The Inverse Universe completely reimagines the original color for something new.



215, 93, 141



255, 82, 150



93, 151, 215



107, 96, 101



171, 0, 67



43, 0, 17

Previews

White Background



This preview shows how the RYB color 215, 93, 141 looks on a white background.

Color Contrast Check

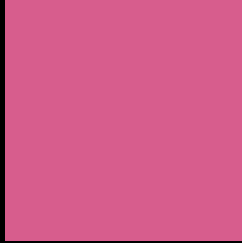
Large Text (above 18pt) WCAG AA ✓ Pass

Any Text WCAG AA × Fail

Large Text (above 18pt) WCAG AAA × Fail

Any Text WCAG AAA × Fail

Black Background



This preview shows how the RYB color 215, 93, 141 looks on a black background.

Color Contrast Check

Large Text (above 18pt) WCAG AA ✓ Pass

Any Text WCAG AA ✓ Pass

Large Text (above 18pt) WCAG AAA ✓ Pass

Any Text WCAG AAA × Fail

If you want to check with other color combinations, try the [Color Contrast Checker](#).

RYB 215, 93, 141 Background



This preview shows how black text looks on a background with the RYB color 215, 93, 141.



This preview shows how white text looks on a background with the RYB color 215, 93, 141.

Color Blindness Simulation

Color vision deficiency is a very complex topic, and I could not describe the different causes any better than Wikipedia does, so if you want to learn more, you should check out their [article about color blindness](#).

Dichromacy



Original Color
215, 93, 141

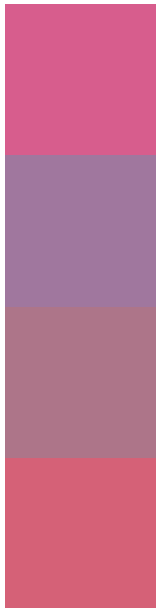
Protanopia
128, 133, 167

Deuteranopia
149, 131, 135



Tritanopia
212, 100, 107

Trichromacy



Original Color
215, 93, 141

Protanomaly
160, 119, 158

Deuteranomaly
173, 117, 137

Tritanomaly
213, 97, 119

Monochromacy



Original Color
215, 93, 141

Achromatopsia
135, 135, 135

Achromatomaly
164, 120, 137

CSS Examples

Text

The CSS property to change the color of the text to RYB 215, 93, 141 is called "color". The color property can be set on classes, ids or directly on the HTML element.

This example shows how text in the color rgb(215, 93, 141) looks like.

```
.text, #text, p{  
    color:rgb(215, 93, 141)  
}
```

If you want to add a text shadow in that color use the text-shadow property, you can generate a text shadow directly with our [CSS Text Shadow Generator](#).

Here you see how black text with a 4 pixel rgb(215, 93, 141) colored shadow looks like.

```
.shadow{ text-shadow: 4px 4px 2px rgb(215, 93, 141) }
```

Border

The CSS property to change the border of an element to RYB 215, 93, 141 is called "border". The border property can be set on classes, ids or directly on the HTML element.

This example shows the color as border, it can be applied via the CSS property "border" or "border-color".

```
.border, #border, table{ border:4px solid rgb(215, 93, 141) }
```

If only the border color should be changed use the property border-color.

```
.border{ border-color:rgb(215, 93, 141) }
```

If you want to add a box shadow in that color use:

Here you see how a box with a 4 pixel rgb(215, 93, 141) colored shadow looks like.

```
.boxshadow{ -moz-box-shadow:4px 4px 4px  
4px rgb(215, 93, 141); -webkit-box-  
shadow:4px 4px 4px 4px rgb(215, 93, 141);  
box-shadow:4px 4px 4px 4px rgb(215, 93,  
141) }
```

Background

The CSS property to change the background color of an element to RGB 215, 93, 141 is called "background". The background property can be set on classes, ids or directly on the HTML element.

```
.background, #background, body{  
background: rgb(215, 93, 141) }
```

If only the background color should be changed can be used:

```
.background{ background-color: rgb(215, 93,  
141) }
```

This example shows the color as background, it is applied via the CSS property "background".

To optimize and compress your CSS code, you can use our [online CSS compressor and optimizer](#) based on csstidy. If you want to create a linear or radial gradient as background or border, check our [CSS Gradient Generator](#).

Hey! You found this booklet interesting? Support Converting Colors with the new Membership Option!

The pro membership hides all ads, plus gives you double the colors in the color bucket, and more awesome pro features!

[Learn more, Memberships starting at \\$2.50/m!](#)

**Follow me
on Twitter!**

@ConvertingColor