

Converting Colors

`RYB(216, 193, 165)`

Have a look what the booklet for
RYB(216, 193, 165) contains.

RYB(216, 193, 165)	3
<i>Conversions</i>	4
<i>Details</i>	6
<i>Harmonies</i>	11
<i>Previews</i>	23
<i>Color Blindness Simulation</i>	26
<i>CSS Examples</i>	29

Color

R_YB(216, 193, 165)

Conversions

Conversions Part 1

Format	Color
Hex	D8B7A5
RGB	216, 183, 165
RGB Percent	85%, 72%, 65%
CMY	0.1529, 0.2821, 0.3529
CMYK	0.00, 0.15, 0.24, 0.15
HSL	21°, 40%, 75%
HSV	21°, 24%, 85%
XYZ	52.0596, 51.2139, 42.7387
YIQ	190.8150, 25.4460, 1.3980

Conversions

Conversions Part 2

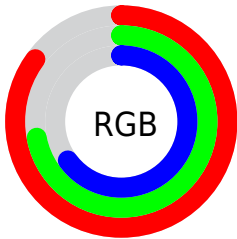
Format	Color
RYB	216, 193, 165
Decimal	14202789
CIELab	76.81, 9.06, 13.58
CIELCh	77, 16.322, 56.289
Yxy	51.2139, 0.3565, 0.3508
Android (android.graphics.Color)	4292392869 (0xFFD8B7A5)
YUV	190.8150, -12.7268, 22.0872
Hunter-Lab	71.5639, 4.6142, 14.6860

Details

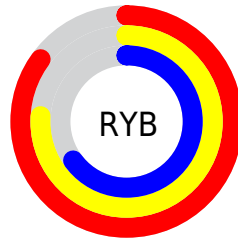
The RYB color **216, 193, 165** is a light color, and the websafe version is hex **CC9999**. A complement of this color would be **165, 185, 216**, and the grayscale version is **191, 191, 191**.

A 20% lighter version of the original color is **249, 255, 220**, and **161, 139, 113** is the 20% darker color. If you saturate the color by 10%, you get **216, 183, 143**, and if you desaturate by 10%, it is **216, 202, 187**.

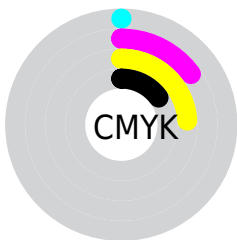
Distribution



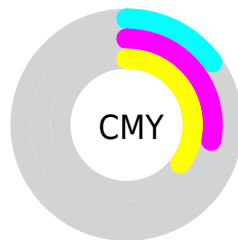
- Red (85%)
- Green (72%)
- Blue (65%)



- Red (85%)
- Yellow (76%)
- Blue (65%)



- Cyan (0%)
- Magenta (15%)
- Yellow (24%)
- Black (15%)



- Cyan (15%)
- Magenta (28%)
- Yellow (35%)

Brightness & Saturation Gradients

These gradients show how the RYB color 216, 193, 165 changes by changing the brightness by 10 percent. The first figure shows a shift by +10% for each color and the second figure -10%.

Similar to the brightness gradients but the following saturation gradients show a change of the RYB color 216, 193, 165 by changing the saturation by 10% instead.

 216, 193, 165

 216, 193, 165


255, 255, 255

 188, 165, 139

 249, 255, 220

 161, 139, 113

 249, 255, 249

 134, 114, 89

 108, 90, 65

 83, 67, 43

 59, 45, 22

 37, 28, 0

 0, 0, 0

 216, 193, 165

 216, 193, 165

■ 216, 183, 143

■ 216, 202, 187

■ 216, 173, 122

■ 216, 213, 208

■ 216, 163, 100

■ 216, 221, 230

■ 216, 153, 79

■ 216, 230, 251

■ 216, 143, 57

■ 216, 235, 255

■ 216, 134, 35

■ 216, 236, 255

■ 216, 123, 14

■ 216, 120, 0

Harmonies

Analogous

The Analogous color harmony consists of three colors that are next to each other on the color wheel.



222, 180, 177



216, 193, 165



185, 204, 160

Triad

The Triadic color harmony groups three colors that are evenly spaced from another and form a triangle on the color wheel.



216, 193, 165



156, 180, 198



190, 186, 217

Complementary

The Complementary color scheme is a pair of colors which are on the opposite of each other on the color wheel.



216, 193, 165



165, 185, 216

Split Complementary

Split-complementary colors differ from the complementary color scheme. The scheme consists of three colors, the original color and two neighbors of the complement color.



171, 185, 219



216, 193, 165



150, 175, 202

Square

The Square scheme is like the rectangle color scheme, but the four colors are evenly spaced on the color wheel.



216, 193, 165



170, 194, 196



156, 180, 214



208, 182, 207

Rectangle

The Rectangle color scheme consists of four colors that form a rectangle on the color wheel.



216, 193, 165



163, 193, 161



156, 180, 214



184, 188, 218

Sweetspot

The Sweet Spot groups the original color and five complimentary colors.



216, 193, 165



255, 246, 237



216, 165, 198



128, 123, 117



0, 0, 0



128, 128, 128

Same Dimension

The Same Dimension uses a secret algorithm to generate beautiful new colors.



216, 193, 165



255, 223, 184



174, 216, 165



107, 102, 96



171, 95, 0



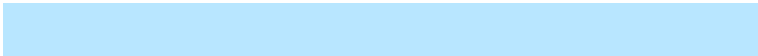
43, 23, 0

Inverse Universe

The Inverse Universe completely reimagines the original color for something new.



165, 185, 216



184, 212, 255



165, 172, 216



96, 100, 107



0, 67, 171



0, 17, 43

Previews

White Background



This preview shows how the RYB color 216, 193, 165 looks on a white background.

Color Contrast Check

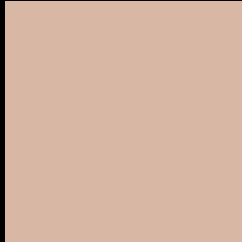
Large Text (above 18pt) WCAG AA × Fail

Any Text WCAG AA × Fail

Large Text (above 18pt) WCAG AAA × Fail

Any Text WCAG AAA × Fail

Black Background



This preview shows how the RYB color 216, 193, 165 looks on a black background.

Color Contrast Check

Large Text (above 18pt) WCAG AA ✓ Pass

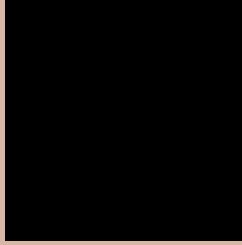
Any Text WCAG AA ✓ Pass

Large Text (above 18pt) WCAG AAA ✓ Pass

Any Text WCAG AAA ✓ Pass

If you want to check with other color combinations, try the [Color Contrast Checker](#).

RYB 216, 193, 165 Background



This preview shows how black text looks on a background with the RYB color 216, 193, 165.



This preview shows how white text looks on a background with the RYB color 216, 193, 165.

Color Blindness Simulation

Color vision deficiency is a very complex topic, and I could not describe the different causes any better than Wikipedia does, so if you want to learn more, you should check out their [article about color blindness](#).

Dichromacy



Original Color
216, 193, 165

Protanopia
181, 198, 168

Deuteranopia
217, 193, 165



Tritanopia
219, 179, 193

Trichromacy



Original Color
216, 193, 165

Protanomaly
201, 205, 167

Deuteranomaly
217, 193, 165

Tritanomaly
218, 180, 183

Monochromacy



Original Color
216, 193, 165

Achromatopsia
191, 191, 191

Achromatomaly
200, 191, 182

CSS Examples

Text

The CSS property to change the color of the text to RYB 216, 193, 165 is called "color". The color property can be set on classes, ids or directly on the HTML element.

This example shows how text in the color rgb(216, 183, 165) looks like.

```
.text, #text, p{  
    color:rgb(216, 183, 165)  
}
```

If you want to add a text shadow in that color use the text-shadow property, you can generate a text shadow directly with our [CSS Text Shadow Generator](#).

Here you see how black text with a 4 pixel rgb(216, 183, 165) colored shadow looks like.

```
.shadow{ text-shadow: 4px 4px 2px rgb(216, 183, 165) }
```

Border

The CSS property to change the border of an element to RYB 216, 193, 165 is called "border". The border property can be set on classes, ids or directly on the HTML element.

This example shows the color as border, it can be applied via the CSS property "border" or "border-color".

```
.border, #border, table{ border:4px solid rgb(216, 183, 165) }
```

If only the border color should be changed use the property `border-color`.

```
.border{ border-color:rgb(216, 183, 165) }
```

If you want to add a box shadow in that color use:

Here you see how a box with a 4 pixel `rgb(216, 183, 165)` colored shadow looks like.

```
.boxshadow{ -moz-box-shadow:4px 4px 4px  
4px rgb(216, 183, 165); -webkit-box-  
shadow:4px 4px 4px 4px rgb(216, 183, 165);  
box-shadow:4px 4px 4px 4px rgb(216, 183,  
165) }
```

Background

The CSS property to change the background color of an element to RYB 216, 193, 165 is called "background". The background property can be set on classes, ids or directly on the HTML element.

```
.background, #background, body{  
background: rgb(216, 183, 165) }
```

If only the background color should be changed can be used:

```
.background{ background-color: rgb(216,  
183, 165) }
```

This example shows the color as background, it is applied via the CSS property "background".

To optimize and compress your CSS code, you can use our [online CSS compressor and optimizer](#) based on csstidy. If you want to create a linear or radial gradient as background or border, check our [CSS Gradient Generator](#).

Hey! You found this booklet interesting? Support Converting Colors with the new Membership Option!

The pro membership hides all ads, plus gives you double the colors in the color bucket, and more awesome pro features!

[Learn more, Memberships starting at \\$2.50/m!](#)

**Follow me
on Twitter!**

@ConvertingColor