

Converting Colors

`RYB(216, 61, 120)`

Have a look what the booklet for
RYB(216, 61, 120) contains.

RYB(216, 61, 120)	3
<i>Conversions</i>	4
<i>Details</i>	6
<i>Harmonies</i>	11
<i>Previews</i>	23
<i>Color Blindness Simulation</i>	26
<i>CSS Examples</i>	29

Color

R_YB(216, 61, 120)

Conversions

Conversions Part 1

Format	Color
Hex	D83D78
RGB	216, 61, 120
RGB Percent	85%, 24%, 47%
CMY	0.1529, 0.7608, 0.5294
CMYK	0.00, 0.72, 0.44, 0.15
HSL	337°, 67%, 54%
HSV	337°, 72%, 85%
XYZ	33.3778, 19.2925, 19.7339
YIQ	114.0710, 73.4410, 51.2090

Conversions

Conversions Part 2

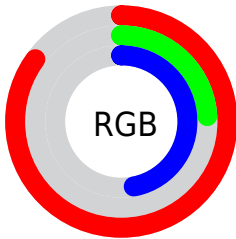
Format	Color
R _Y B	216, 61, 120
Decimal	14171512
CIE _{Lab}	51.03, 63.85, 2.38
CIE _{LCh}	51, 63.890, 2.137
Yxy	19.2925, 0.4610, 0.2665
Android (android.graphics.Color)	4292361592 (0xFFD83D78)
YUV	114.0710, 2.9230, 89.3917
Hunter-Lab	43.9232, 58.7788, 4.1083

Details

The RYB color **216, 61, 120** is a dark color, and the websafe version is hex **CC3366**. The color can be described as dark muted rose. A complement of this color would be **61, 157, 216**, and the grayscale version is **114, 114, 114**.

A 20% lighter version of the original color is **255, 120, 172**, and **156, 0, 72** is the 20% darker color. If you saturate the color by 10%, you get **216, 39, 107**, and if you desaturate by 10%, it is **216, 83, 133**.

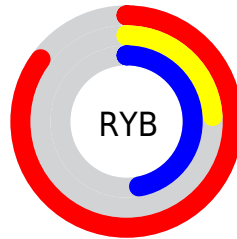
Distribution



Red (85%)

Green (24%)

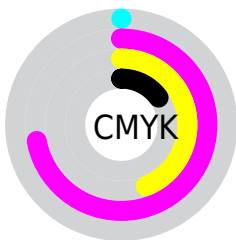
Blue (47%)



Red (85%)

Yellow (24%)

Blue (47%)

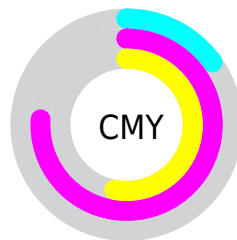


Cyan (0%)

Magenta (72%)

Yellow (44%)

Black (15%)



Cyan (15%)


Magenta (76%)

Yellow (53%)

Brightness & Saturation Gradients

These gradients show how the RYB color 216, 61, 120 changes by changing the brightness by 10 percent. The first figure shows a shift by +10% for each color and the second figure -10%.

Similar to the brightness gradients but the following saturation gradients show a change of the RYB color 216, 61, 120 by changing the saturation by 10% instead.

 216, 61, 120

 216, 61, 120

255, 255, 255

 186, 24, 95

 255, 120, 172

 156, 0, 72

 255, 148, 199

 126, 0, 50

 255, 177, 227

 97, 0, 29

 255, 206, 255

 70, 0, 3

 255, 236, 255

 39, 0, 1

 0, 0, 0

 216, 61, 120

 216, 61, 120

 216, 39, 107

 216, 83, 133

■ 216, 18, 93

■ 216, 104, 147

■ 216, 0, 82

■ 216, 126, 160

■ 216, 147, 174

■ 216, 169, 187

■ 216, 191, 200

■ 216, 212, 214

■ 216, 227, 234

■ 216, 240, 255

Harmonies

Analogous

The Analogous color harmony consists of three colors that are next to each other on the color wheel.



189, 78, 173



216, 61, 120



212, 74, 67

Triad

The Triadic color harmony groups three colors that are evenly spaced from another and form a triangle on the color wheel.



216, 61, 120



4, 135, 52



0, 85, 218

Complementary

The Complementary color scheme is a pair of colors which are on the opposite of each other on the color wheel.



216, 61, 120



61, 157, 216

Split Complementary

Split-complementary colors differ from the complementary color scheme. The scheme consists of three colors, the original color and two neighbors of the complement color.



0, 80, 178



216, 61, 120



0, 97, 143

Square

The Square scheme is like the rectangle color scheme, but the four colors are evenly spaced on the color wheel.



216, 61, 120



27, 143, 0



0, 79, 146



0, 82, 231

Rectangle

The Rectangle color scheme consists of four colors that form a rectangle on the color wheel.



216, 61, 120



197, 120, 33



0, 79, 146



0, 85, 207

Sweetspot

The Sweet Spot groups the original color and five complimentary colors.



216, 61, 120



255, 199, 220



157, 61, 216



128, 94, 107



0, 0, 0



128, 128, 128

Same Dimension

The Same Dimension uses a secret algorithm to generate beautiful new colors.



216, 61, 120



255, 36, 119



216, 81, 61



107, 96, 100



171, 0, 65



43, 0, 17

Inverse Universe

The Inverse Universe completely reimagines the original color for something new.



216, 61, 120



255, 36, 119



61, 134, 216



107, 96, 100



171, 0, 65



43, 0, 17

Previews

White Background



This preview shows how the RYB color 216, 61, 120 looks on a white background.

Color Contrast Check

Large Text (above 18pt) WCAG AA ✓ Pass

Any Text WCAG AA × Fail

Large Text (above 18pt) WCAG AAA × Fail

Any Text WCAG AAA × Fail

Black Background



This preview shows how the RYB color 216, 61, 120 looks on a black background.

Color Contrast Check

Large Text (above 18pt) WCAG AA ✓ Pass

Any Text WCAG AA ✓ Pass

Large Text (above 18pt) WCAG AAA ✓ Pass

Any Text WCAG AAA × Fail

If you want to check with other color combinations, try the [Color Contrast Checker](#).

RYB 216, 61, 120 Background



This preview shows how black text looks on a background with the RYB color 216, 61, 120.

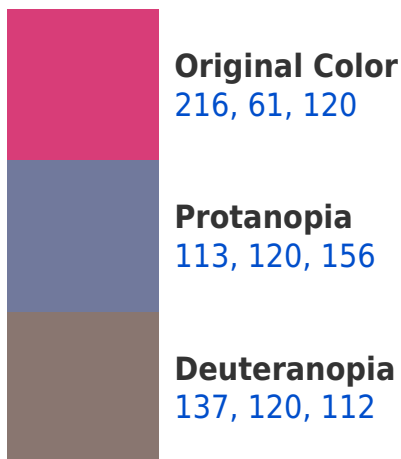


This preview shows how white text looks on a background with the RYB color 216, 61, 120.

Color Blindness Simulation

Color vision deficiency is a very complex topic, and I could not describe the different causes any better than Wikipedia does, so if you want to learn more, you should check out their [article about color blindness](#).

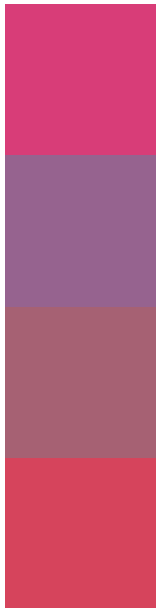
Dichromacy





Tritanopia
213, 72, 76

Trichromacy



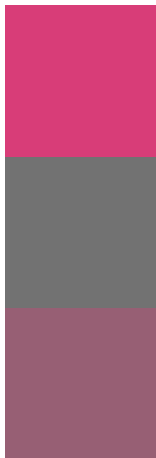
Original Color
216, 61, 120

Protanomaly
150, 99, 143

Deuteranomaly
166, 97, 115

Tritanomaly
214, 68, 92

Monochromacy



Original Color
216, 61, 120

Achromatopsia
114, 114, 114

Achromatomaly
151, 95, 116

CSS Examples

Text

The CSS property to change the color of the text to RYB 216, 61, 120 is called "color". The color property can be set on classes, ids or directly on the HTML element.

This example shows how text in the color `rgb(216, 61, 120)` looks like.

```
.text, #text, p{  
    color:rgb(216, 61, 120)  
}
```

If you want to add a text shadow in that color use the text-shadow property, you can generate a text shadow directly with our [CSS Text Shadow Generator](#).

Here you see how black text with a 4 pixel rgb(216, 61, 120) colored shadow looks like.

```
.shadow{ text-shadow: 4px 4px 2px rgb(216, 61, 120) }
```

Border

The CSS property to change the border of an element to RYB 216, 61, 120 is called "border". The border property can be set on classes, ids or directly on the HTML element.

This example shows the color as border, it can be applied via the CSS property "border" or "border-color".

```
.border, #border, table{ border:4px solid rgb(216, 61, 120) }
```

If only the border color should be changed use the property `border-color`.

```
.border{ border-color:rgb(216, 61, 120) }
```

If you want to add a box shadow in that color use:

Here you see how a box with a 4 pixel `rgb(216, 61, 120)` colored shadow looks like.

```
.boxshadow{ -moz-box-shadow:4px 4px 4px 4px rgb(216, 61, 120); -webkit-box-shadow:4px 4px 4px 4px rgb(216, 61, 120); box-shadow:4px 4px 4px 4px rgb(216, 61, 120) }
```

Background

The CSS property to change the background color of an element to RGB 216, 61, 120 is called "background". The background property can be set on classes, ids or directly on the HTML element.

```
.background, #background, body{  
background: rgb(216, 61, 120) }
```

If only the background color should be changed can be used:

```
.background{ background-color: rgb(216, 61,  
120) }
```

This example shows the color as background, it is applied via the CSS property "background".

To optimize and compress your CSS code, you can use our [online CSS compressor and optimizer](#) based on csstidy. If you want to create a linear or radial gradient as background or border, check our [CSS Gradient Generator](#).

Hey! You found this booklet interesting? Support Converting Colors with the new Membership Option!

The pro membership hides all ads, plus gives you double the colors in the color bucket, and more awesome pro features!

[Learn more, Memberships starting at \\$2.50/m!](#)

**Follow me
on Twitter!**

@ConvertingColor