

Converting Colors

`RYB(217, 95, 142)`

Have a look what the booklet for
RYB(217, 95, 142) contains.

RYB(217, 95, 142)	3
<i>Conversions</i>	4
<i>Details</i>	6
<i>Harmonies</i>	11
<i>Previews</i>	23
<i>Color Blindness Simulation</i>	26
<i>CSS Examples</i>	29

Color

RYP(217, 95, 142)

Conversions

Conversions Part 1

Format	Color
Hex	D95F8E
RGB	217, 95, 142
RGB Percent	85%, 37%, 56%
CMY	0.1490, 0.6275, 0.4431
CMYK	0.00, 0.56, 0.35, 0.15
HSL	337°, 62%, 61%
HSV	337°, 56%, 85%
XYZ	37.5900, 24.8891, 28.4141
YIQ	136.8360, 57.6250, 40.4810

Conversions

Conversions Part 2

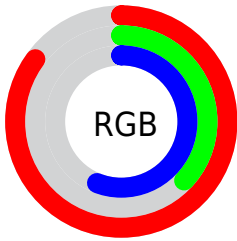
Format	Color
R_{YB}	217, 95, 142
Decimal	14245774
CIE _{Lab}	56.97, 52.50, -2.00
CIE _{LCh}	57, 52.537, 357.817
Yxy	24.8891, 0.4136, 0.2738
Android (android.graphics.Color)	4292435854 (0xFFD95F8E)
YUV	136.8360, 2.5459, 70.3038
Hunter-Lab	49.8890, 47.1890, 1.1539

Details

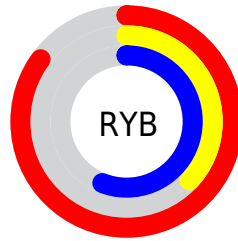
The RYB color **217, 95, 142** is a dark color, and the websafe version is hex **CC6699**. The color can be described as middle muted rose. A complement of this color would be **95, 171, 217**, and the grayscale version is **137, 137, 137**.

A 20% lighter version of the original color is **255, 150, 196**, and **158, 39, 92** is the 20% darker color. If you saturate the color by 10%, you get **217, 73, 129**, and if you desaturate by 10%, it is **217, 117, 155**.

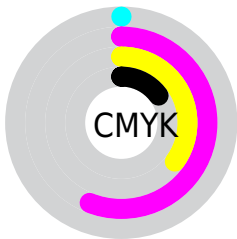
Distribution



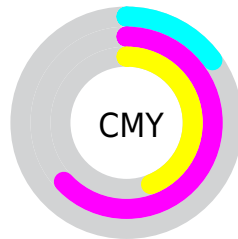
- Red (85%)
- Green (37%)
- Blue (56%)



- Red (85%)
- Yellow (37%)
- Blue (56%)



- Cyan (0%)
- Magenta (56%)
- Yellow (35%)
- Black (15%)



- Cyan (15%)
- Magenta (63%)
- Yellow (44%)

Brightness & Saturation Gradients

These gradients show how the RYB color 217, 95, 142 changes by changing the brightness by 10 percent. The first figure shows a shift by +10% for each color and the second figure -10%.

Similar to the brightness gradients but the following saturation gradients show a change of the RYB color 217, 95, 142 by changing the saturation by 10% instead.



217, 95, 142



217, 95, 142

255, 255, 255



187, 68, 116



255, 150, 196



158, 39, 92



255, 178, 223



130, 0, 69



255, 206, 252



102, 0, 46



255, 235, 255



74, 0, 26



50, 0, 2



0, 0, 0



217, 95, 142



217, 95, 142



217, 73, 129



217, 117, 155

 217, 52, 115

 217, 138, 169

 217, 30, 102

 217, 160, 182

 217, 8, 89

 217, 182, 195

 217, 0, 84

 217, 203, 209

 217, 222, 225

 217, 236, 247

 217, 238, 255

 217, 236, 255

Harmonies

Analogous

The Analogous color harmony consists of three colors that are next to each other on the color wheel.



189, 107, 186



217, 95, 142



219, 100, 97

Triad

The Triadic color harmony groups three colors that are evenly spaced from another and form a triangle on the color wheel.



217, 95, 142



50, 147, 78



0, 90, 214

Complementary

The Complementary color scheme is a pair of colors which are on the opposite of each other on the color wheel.



217, 95, 142



95, 171, 217

Split Complementary

Split-complementary colors differ from the complementary color scheme. The scheme consists of three colors, the original color and two neighbors of the complement color.



0, 84, 178



217, 95, 142



56, 132, 155

Square

The Square scheme is like the rectangle color scheme, but the four colors are evenly spaced on the color wheel.



217, 95, 142



79, 164, 38



0, 87, 159



0, 88, 228

Rectangle

The Rectangle color scheme consists of four colors that form a rectangle on the color wheel.



217, 95, 142



208, 126, 70



0, 87, 159



0, 88, 204

Sweetspot

The Sweet Spot groups the original color and five complimentary colors.



217, 95, 142



255, 212, 228



168, 95, 217



128, 102, 112



0, 0, 0



128, 128, 128

Same Dimension

The Same Dimension uses a secret algorithm to generate beautiful new colors.



217, 95, 142



255, 84, 150



217, 108, 95



110, 99, 103



173, 0, 67



46, 0, 18

Inverse Universe

The Inverse Universe completely reimagines the original color for something new.



217, 95, 142



255, 84, 150



95, 153, 217



110, 99, 103



173, 0, 67



46, 0, 18

Previews

White Background



This preview shows how the RYB color 217, 95, 142 looks on a white background.

Color Contrast Check

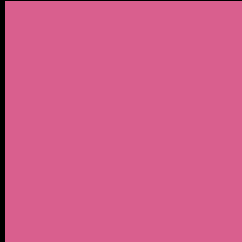
Large Text (above 18pt) WCAG AA ✓ Pass

Any Text WCAG AA ✗ Fail

Large Text (above 18pt) WCAG AAA ✗ Fail

Any Text WCAG AAA ✗ Fail

Black Background



This preview shows how the RYB color 217, 95, 142 looks on a black background.

Color Contrast Check

Large Text (above 18pt) WCAG AA ✓ Pass

Any Text WCAG AA ✓ Pass

Large Text (above 18pt) WCAG AAA ✓ Pass

Any Text WCAG AAA × Fail

If you want to check with other color combinations, try the [Color Contrast Checker](#).

R Y B 217, 95, 142 Background



This preview shows how black text looks on a background with the R Y B color 217, 95, 142.



This preview shows how white text looks on a background with the R Y B color 217, 95, 142.

Color Blindness Simulation

Color vision deficiency is a very complex topic, and I could not describe the different causes any better than Wikipedia does, so if you want to learn more, you should check out their [article about color blindness](#).

Dichromacy



Original Color
217, 95, 142

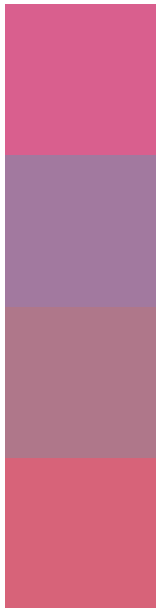
Protanopia
130, 135, 168

Deuteranopia
151, 133, 136



Tritanopia
214, 102, 109

Trichromacy



Original Color
217, 95, 142

Protanomaly
162, 121, 159

Deuteranomaly
175, 119, 138

Tritanomaly
215, 99, 121

Monochromacy



Original Color
217, 95, 142

Achromatopsia
137, 137, 137

Achromatomaly
166, 122, 139

CSS Examples

Text

The CSS property to change the color of the text to RYB 217, 95, 142 is called "color". The color property can be set on classes, ids or directly on the HTML element.

This example shows how text in the color rgb(217, 95, 142) looks like.

```
.text, #text, p{  
    color:rgb(217, 95, 142)  
}
```

If you want to add a text shadow in that color use the text-shadow property, you can generate a text shadow directly with our [CSS Text Shadow Generator](#).

Here you see how black text with a 4 pixel rgb(217, 95, 142) colored shadow looks like.

```
.shadow{ text-shadow: 4px 4px 2px rgb(217, 95, 142) }
```

Border

The CSS property to change the border of an element to RYB 217, 95, 142 is called "border". The border property can be set on classes, ids or directly on the HTML element.

This example shows the color as border, it can be applied via the CSS property "border" or "border-color".

```
.border, #border, table{ border:4px solid rgb(217, 95, 142) }
```

If only the border color should be changed use the property border-color.

```
.border{ border-color:rgb(217, 95, 142) }
```

If you want to add a box shadow in that color use:

Here you see how a box with a 4 pixel rgb(217, 95, 142) colored shadow looks like.

```
.boxshadow{ -moz-box-shadow:4px 4px 4px  
4px rgb(217, 95, 142); -webkit-box-  
shadow:4px 4px 4px 4px rgb(217, 95, 142);  
box-shadow:4px 4px 4px 4px rgb(217, 95,  
142) }
```

Background

The CSS property to change the background color of an element to RGB 217, 95, 142 is called "background". The background property can be set on classes, ids or directly on the HTML element.

```
.background, #background, body{  
background: rgb(217, 95, 142) }
```

If only the background color should be changed can be used:

```
.background{ background-color: rgb(217, 95,  
142) }
```

This example shows the color as background, it is applied via the CSS property "background".

To optimize and compress your CSS code, you can use our [online CSS compressor and optimizer](#) based on csstidy. If you want to create a linear or radial gradient as background or border, check our [CSS Gradient Generator](#).

Hey! You found this booklet interesting? Support Converting Colors with the new Membership Option!

The pro membership hides all ads, plus gives you double the colors in the color bucket, and more awesome pro features!

[Learn more, Memberships starting at \\$2.50/m!](#)

**Follow me
on Twitter!**

@ConvertingColor