

Converting Colors

`RYB(218, 164, 145)`

Have a look what the booklet for
RYB(218, 164, 145) contains.

RYB(218, 164, 145)	3
<i>Conversions</i>	4
<i>Details</i>	6
<i>Harmonies</i>	11
<i>Previews</i>	23
<i>Color Blindness Simulation</i>	26
<i>CSS Examples</i>	29

Color

R_YB(218, 164, 145)

Conversions

Conversions Part 1

Format	Color
Hex	DAA091
RGB	218, 160, 145
RGB Percent	85%, 63%, 57%
CMY	0.1451, 0.3723, 0.4314
CMYK	0.00, 0.27, 0.33, 0.15
HSL	12°, 50%, 71%
HSV	12°, 33%, 85%
XYZ	46.6083, 42.1178, 32.4611
YIQ	175.6320, 39.3830, 7.6310

Conversions

Conversions Part 2

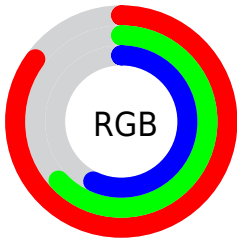
Format	Color
R _Y B	218, 164, 145
Decimal	14327953
CIE Lab	70.95, 19.49, 16.31
CIE LCh	71, 25.416, 39.919
Yxy	42.1178, 0.3846, 0.3475
Android (android.graphics.Color)	4292518033 (0xFFDAA091)
YUV	175.6320, -15.1016, 37.1567
Hunter-Lab	64.8982, 14.6224, 15.7728

Details

The RYB color **218, 164, 145** is a light color, and the websafe version is hex **CC9999**. A complement of this color would be **145, 177, 218**, and the grayscale version is **176, 176, 176**.

A 20% lighter version of the original color is **255, 221, 199**, and **161, 111, 95** is the 20% darker color. If you saturate the color by 10%, you get **218, 148, 123**, and if you desaturate by 10%, it is **218, 179, 167**.

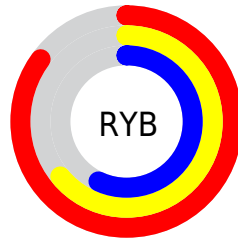
Distribution



Red (85%)

Green (63%)

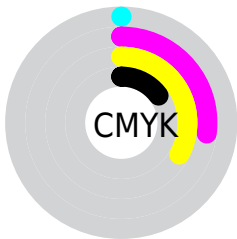
Blue (57%)



Red (85%)

Yellow (64%)

Blue (57%)

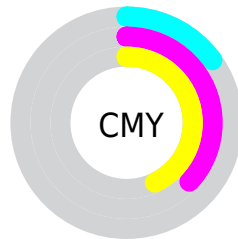


Cyan (0%)

Magenta (27%)

Yellow (33%)

Black (15%)



Cyan (15%)

Magenta (37%)

Yellow (43%)

Brightness & Saturation Gradients

These gradients show how the RYB color 218, 164, 145 changes by changing the brightness by 10 percent. The first figure shows a shift by +10% for each color and the second figure -10%.

Similar to the brightness gradients but the following saturation gradients show a change of the RYB color 218, 164, 145 by changing the saturation by 10% instead.

 218, 164, 145

 218, 164, 145

255, 255, 255

 189, 138, 119

 255, 221, 199

 162, 111, 95

 245, 255, 227

 134, 87, 71

 108, 63, 48

 82, 41, 27

 57, 21, 1

 35, 0, 0

 0, 0, 0

 218, 164, 145

 218, 164, 145

 218, 148, 123


 218, 179, 167

 218, 131, 101


 218, 197, 189

 218, 115, 80

 218, 213, 210

 218, 100, 58

 218, 224, 232

 218, 84, 36

 218, 234, 254

 218, 67, 14

 218, 237, 255

 218, 57, 0

Harmonies

Analogous

The Analogous color harmony consists of three colors that are next to each other on the color wheel.



220, 157, 167



218, 164, 145



204, 202, 131

Triad

The Triadic color harmony groups three colors that are evenly spaced from another and form a triangle on the color wheel.



218, 164, 145



131, 167, 185



156, 169, 219

Complementary

The Complementary color scheme is a pair of colors which are on the opposite of each other on the color wheel.



218, 164, 145



145, 177, 218

Split Complementary

Split-complementary colors differ from the complementary color scheme. The scheme consists of three colors, the original color and two neighbors of the complement color.



125, 159, 216



218, 164, 145



111, 151, 187

Square

The Square scheme is like the rectangle color scheme, but the four colors are evenly spaced on the color wheel.



218, 164, 145



138, 181, 162



107, 150, 202



187, 165, 209

Rectangle

The Rectangle color scheme consists of four colors that form a rectangle on the color wheel.



218, 164, 145



154, 191, 127



107, 150, 202



145, 167, 219

Sweetspot

The Sweet Spot groups the original color and five complimentary colors.



218, 164, 145



255, 236, 230



218, 145, 203



128, 116, 112



0, 0, 0



128, 128, 128

Same Dimension

The Same Dimension uses a secret algorithm to generate beautiful new colors.



218, 164, 145



255, 179, 153



176, 218, 145



110, 101, 99



173, 45, 0



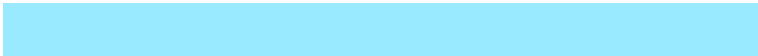
46, 11, 0

Inverse Universe

The Inverse Universe completely reimagines the original color for something new.



145, 177, 218



153, 198, 255



145, 162, 218



99, 104, 110



0, 77, 173



0, 20, 46

Previews

White Background



This preview shows how the RYB color 218, 164, 145 looks on a white background.

Color Contrast Check

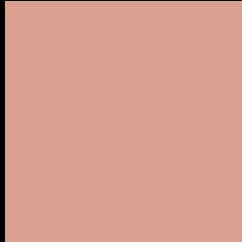
Large Text (above 18pt) WCAG AA × Fail

Any Text WCAG AA × Fail

Large Text (above 18pt) WCAG AAA × Fail

Any Text WCAG AAA × Fail

Black Background



This preview shows how the RYB color 218, 164, 145 looks on a black background.

Color Contrast Check

Large Text (above 18pt) WCAG AA ✓ Pass

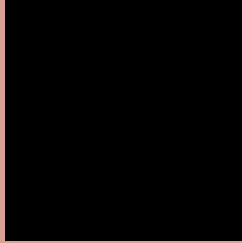
Any Text WCAG AA ✓ Pass

Large Text (above 18pt) WCAG AAA ✓ Pass

Any Text WCAG AAA ✓ Pass

If you want to check with other color combinations, try the [Color Contrast Checker](#).

RYB 218, 164, 145 Background



This preview shows how black text looks on a background with the RYB color 218, 164, 145.

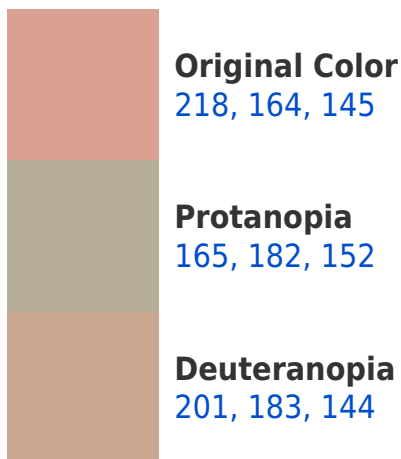


This preview shows how white text looks on a background with the RYB color 218, 164, 145.

Color Blindness Simulation

Color vision deficiency is a very complex topic, and I could not describe the different causes any better than Wikipedia does, so if you want to learn more, you should check out their [article about color blindness](#).

Dichromacy





Tritanopia
220, 157, 169

Trichromacy



Original Color

218, 164, 145

Protanomaly

195, 181, 149

Deuteranomaly

207, 173, 144

Tritanomaly

219, 158, 160

Monochromacy



Original Color

218, 164, 145

Achromatopsia

176, 176, 176

Achromatomaly

191, 171, 165

CSS Examples

Text

The CSS property to change the color of the text to RYB 218, 164, 145 is called "color". The color property can be set on classes, ids or directly on the HTML element.

This example shows how text in the color rgb(218, 160, 145) looks like.

```
.text, #text, p{  
    color:rgb(218, 160, 145)  
}
```

If you want to add a text shadow in that color use the text-shadow property, you can generate a text shadow directly with our [CSS Text Shadow Generator](#).

Here you see how black text with a 4 pixel rgb(218, 160, 145) colored shadow looks like.

```
.shadow{ text-shadow: 4px 4px 2px rgb(218, 160, 145) }
```

Border

The CSS property to change the border of an element to RYB 218, 164, 145 is called "border". The border property can be set on classes, ids or directly on the HTML element.

This example shows the color as border, it can be applied via the CSS property "border" or "border-color".

```
.border, #border, table{ border:4px solid rgb(218, 160, 145) }
```

If only the border color should be changed use the property `border-color`.

```
.border{ border-color:rgb(218, 160, 145) }
```

If you want to add a box shadow in that color use:

Here you see how a box with a 4 pixel `rgb(218, 160, 145)` colored shadow looks like.

```
.boxshadow{ -moz-box-shadow:4px 4px 4px  
4px rgb(218, 160, 145); -webkit-box-  
shadow:4px 4px 4px 4px rgb(218, 160, 145);  
box-shadow:4px 4px 4px 4px rgb(218, 160,  
145) }
```

Background

The CSS property to change the background color of an element to RYB 218, 164, 145 is called "background". The background property can be set on classes, ids or directly on the HTML element.

```
.background, #background, body{  
background: rgb(218, 160, 145) }
```

If only the background color should be changed can be used:

```
.background{ background-color: rgb(218,  
160, 145) }
```

This example shows the color as background, it is applied via the CSS property "background".

To optimize and compress your CSS code, you can use our [online CSS compressor and optimizer](#) based on csstidy. If you want to create a linear or radial gradient as background or border, check our [CSS Gradient Generator](#).

Hey! You found this booklet interesting? Support Converting Colors with the new Membership Option!

The pro membership hides all ads, plus gives you double the colors in the color bucket, and more awesome pro features!

[Learn more, Memberships starting at \\$2.50/m!](#)

**Follow me
on Twitter!**

@ConvertingColor