

Converting Colors

`RYB(218, 189, 188)`

Have a look what the booklet for
RYB(218, 189, 188) contains.

RYB(218, 189, 188)	3
<i>Conversions</i>	4
<i>Details</i>	6
<i>Harmonies</i>	11
<i>Previews</i>	23
<i>Color Blindness Simulation</i>	26
<i>CSS Examples</i>	29

Color

R_YB(218, 189, 188)

Conversions

Conversions Part 1

Format	Color
Hex	DABDBC
RGB	218, 189, 188
RGB Percent	85%, 74%, 74%
CMY	0.1451, 0.2590, 0.2627
CMYK	0.00, 0.13, 0.14, 0.15
HSL	2°, 29%, 80%
HSV	2°, 14%, 85%
XYZ	56.1812, 54.9176, 55.2160
YIQ	197.5570, 17.6050, 5.8370

Conversions

Conversions Part 2

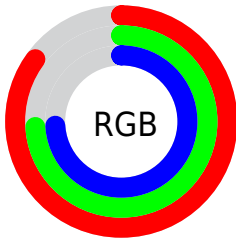
Format	Color
R _Y B	218, 189, 188
Decimal	14335420
CIE Lab	78.99, 10.16, 4.29
CIE LCh	79, 11.032, 22.902
Yxy	54.9176, 0.3378, 0.3302
Android (android.graphics.Color)	4292525500 (0xFFDABDBC)
YUV	197.5570, -4.7116, 17.9285
Hunter-Lab	74.1064, 5.6374, 7.6980

Details

The RYB color **218, 189, 188** is a light color, and the websafe version is hex **FFCCCC**. A complement of this color would be **188, 203, 218**, and the grayscale version is **198, 198, 198**.

A 20% lighter version of the original color is **255, 245, 244**, and **163, 136, 135** is the 20% darker color. If you saturate the color by 10%, you get **218, 168, 166**, and if you desaturate by 10%, it is **218, 210, 210**.

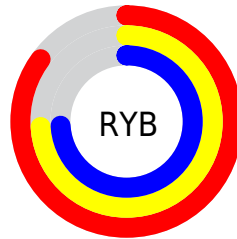
Distribution



Red (85%)

Green (74%)

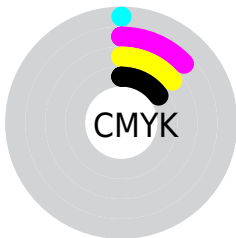
Blue (74%)



Red (85%)

Yellow (74%)

Blue (74%)

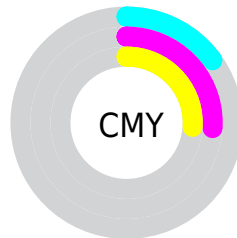


Cyan (0%)

Magenta (13%)

Yellow (14%)

Black (15%)



Cyan (15%)


Magenta (26%)

Yellow (26%)

Brightness & Saturation Gradients

These gradients show how the RYB color 218, 189, 188 changes by changing the brightness by 10 percent. The first figure shows a shift by +10% for each color and the second figure -10%.


Similar to the brightness gradients but the following saturation gradients show a change of the RYB color 218, 189, 188 by changing the saturation by 10% instead.

 218, 189, 188

255, 255, 255


 255, 245, 244

 218, 189, 188

 190, 162, 161

 163, 136, 135

 136, 110, 110

 111, 86, 85

 86, 63, 62

 62, 41, 40


 40, 20, 20

 15, 0, 0

 0, 0, 0

 218, 189, 188

 218, 189, 188

 218, 168, 166


 218, 210, 210

 218, 147, 144


 218, 225, 232


 218, 126, 123


 218, 235, 253

 218, 105, 101

 218, 237, 255

 218, 83, 79

 218, 62, 57

 218, 41, 35

 218, 20, 14

 218, 7, 0

Harmonies

Analogous

The Analogous color harmony consists of three colors that are next to each other on the color wheel.



215, 189, 198



218, 189, 188



215, 196, 180

Triad

The Triadic color harmony groups three colors that are evenly spaced from another and form a triangle on the color wheel.



218, 189, 188



183, 200, 199



182, 192, 216

Complementary

The Complementary color scheme is a pair of colors which are on the opposite of each other on the color wheel.



218, 189, 188



188, 203, 218

Split Complementary

Split-complementary colors differ from the complementary color scheme. The scheme consists of three colors, the original color and two neighbors of the complement color.



173, 189, 212



218, 189, 188



174, 191, 202

Square

The Square scheme is like the rectangle color scheme, but the four colors are evenly spaced on the color wheel.



218, 189, 188



177, 197, 179



170, 186, 203



195, 194, 214

Rectangle

The Rectangle color scheme consists of four colors that form a rectangle on the color wheel.



218, 189, 188



210, 210, 176



170, 186, 203



178, 191, 215

Sweetspot

The Sweet Spot groups the original color and five complimentary colors.



218, 189, 188



255, 245, 245



218, 188, 218



128, 121, 121



0, 0, 0



128, 128, 128

Same Dimension

The Same Dimension uses a secret algorithm to generate beautiful new colors.



218, 189, 188



255, 213, 212



218, 218, 188



110, 99, 99



173, 6, 0



46, 1, 0

Inverse Universe

The Inverse Universe completely reimagines the original color for something new.



188, 203, 218



212, 233, 255



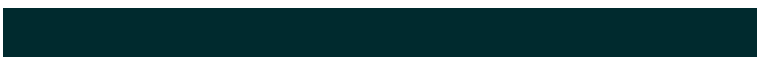
188, 198, 218



99, 104, 110



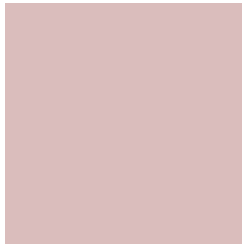
0, 85, 173



0, 22, 46

Previews

White Background



This preview shows how the RYB color 218, 189, 188 looks on a white background.

Color Contrast Check

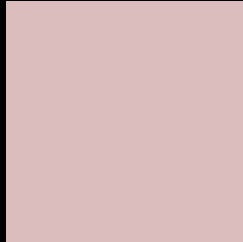
Large Text (above 18pt) WCAG AA × Fail

Any Text WCAG AA × Fail

Large Text (above 18pt) WCAG AAA × Fail

Any Text WCAG AAA × Fail

Black Background



This preview shows how the RYB color 218, 189, 188 looks on a black background.

Color Contrast Check

Large Text (above 18pt) WCAG AA ✓ Pass

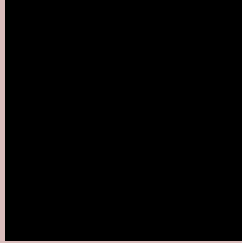
Any Text WCAG AA ✓ Pass

Large Text (above 18pt) WCAG AAA ✓ Pass

Any Text WCAG AAA ✓ Pass

If you want to check with other color combinations, try the [Color Contrast Checker](#).

R Y B 218, 189, 188 Background



This preview shows how black text looks on a background with the RYB color 218, 189, 188.



This preview shows how white text looks on a background with the RYB color 218, 189, 188.

Color Blindness Simulation

Color vision deficiency is a very complex topic, and I could not describe the different causes any better than Wikipedia does, so if you want to learn more, you should check out their [article about color blindness](#).

Dichromacy



Original Color
218, 189, 188

Protanopia
200, 198, 191

Deuteranopia
217, 189, 188



Tritanopia
220, 187, 201

Trichromacy



Original Color
218, 189, 188

Protanomaly
207, 194, 190

Deuteranomaly
217, 189, 188

Tritanomaly
219, 188, 196

Monochromacy



Original Color
218, 189, 188

Achromatopsia
198, 198, 198

Achromatomaly
205, 195, 194

CSS Examples

Text

The CSS property to change the color of the text to RYB 218, 189, 188 is called "color". The color property can be set on classes, ids or directly on the HTML element.

This example shows how text in the color `rgb(218, 189, 188)` looks like.

```
.text, #text, p{  
    color:rgb(218, 189, 188)  
}
```

If you want to add a text shadow in that color use the text-shadow property, you can generate a text shadow directly with our [CSS Text Shadow Generator](#).

Here you see how black text with a 4 pixel rgb(218, 189, 188) colored shadow looks like.

```
.shadow{ text-shadow: 4px 4px 2px rgb(218, 189, 188) }
```

Border

The CSS property to change the border of an element to RYB 218, 189, 188 is called "border". The border property can be set on classes, ids or directly on the HTML element.

This example shows the color as border, it can be applied via the CSS property "border" or "border-color".

```
.border, #border, table{ border:4px solid rgb(218, 189, 188) }
```

If only the border color should be changed use the property `border-color`.

```
.border{ border-color:rgb(218, 189, 188) }
```

If you want to add a box shadow in that color use:

Here you see how a box with a 4 pixel `rgb(218, 189, 188)` colored shadow looks like.

```
.boxshadow{ -moz-box-shadow:4px 4px 4px  
4px rgb(218, 189, 188); -webkit-box-  
shadow:4px 4px 4px 4px rgb(218, 189, 188);  
box-shadow:4px 4px 4px 4px rgb(218, 189,  
188) }
```

Background

The CSS property to change the background color of an element to RYB 218, 189, 188 is called "background". The background property can be set on classes, ids or directly on the HTML element.

```
.background, #background, body{  
background: rgb(218, 189, 188) }
```

If only the background color should be changed can be used:

```
.background{ background-color: rgb(218,  
189, 188) }
```

This example shows the color as background, it is applied via the CSS property "background".

To optimize and compress your CSS code, you can use our [online CSS compressor and optimizer](#) based on csstidy. If you want to create a linear or radial gradient as background or border, check our [CSS Gradient Generator](#).

Hey! You found this booklet interesting? Support Converting Colors with the new Membership Option!

The pro membership hides all ads, plus gives you double the colors in the color bucket, and more awesome pro features!

[Learn more, Memberships starting at \\$2.50/m!](#)

**Follow me
on Twitter!**

@ConvertingColor