

Converting Colors

`RYB(219, 133, 143)`

Have a look what the booklet for
RYB(219, 133, 143) contains.

RYB(219, 133, 143)	3
<i>Conversions</i>	4
<i>Details</i>	6
<i>Harmonies</i>	11
<i>Previews</i>	23
<i>Color Blindness Simulation</i>	26
<i>CSS Examples</i>	29

Color

$\text{RYB}(219, 133, 143)$

Conversions

Conversions Part 1

Format	Color
Hex	DB858F
RGB	219, 133, 143
RGB Percent	86%, 52%, 56%
CMY	0.1412, 0.4784, 0.4392
CMYK	0.00, 0.39, 0.35, 0.14
HSL	353°, 54%, 69%
HSV	353°, 39%, 86%
XYZ	42.5589, 33.8183, 30.2711
YIQ	159.8540, 48.0460, 21.3420

Conversions

Conversions Part 2

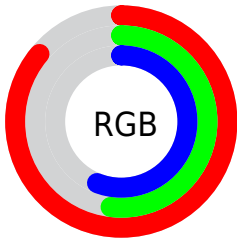
Format	Color
R _Y B	219, 133, 143
Decimal	14386575
CIE Lab	64.82, 34.17, 8.81
CIE LCh	65, 35.283, 14.457
Yxy	33.8183, 0.3991, 0.3171
Android (android.graphics.Color)	4292576655 (0xFFDB858F)
YUV	159.8540, -8.3090, 51.8710
Hunter-Lab	58.1535, 28.8642, 9.8448

Details

The RYB color **219, 133, 143** is a light color, and the websafe version is hex **FF9999**. A complement of this color would be **133, 179, 219**, and the grayscale version is **160, 160, 160**.

A 20% lighter version of the original color is **255, 187, 197**, and **162, 82, 93** is the 20% darker color. If you saturate the color by 10%, you get **219, 111, 124**, and if you desaturate by 10%, it is **219, 155, 162**.

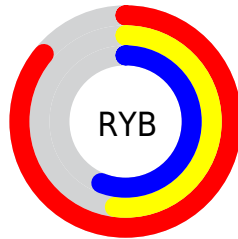
Distribution



Red (86%)

Green (52%)

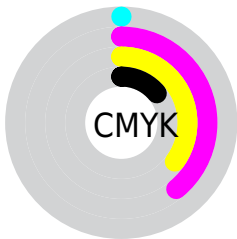
Blue (56%)



Red (86%)

Yellow (52%)

Blue (56%)

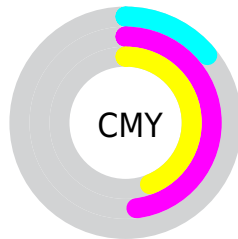


Cyan (0%)

Magenta (39%)

Yellow (35%)

Black (14%)



Cyan (14%)

Magenta (48%)

Yellow (44%)


Brightness & Saturation Gradients

These gradients show how the RYB color 219, 133, 143 changes by changing the brightness by 10 percent. The first figure shows a shift by +10% for each color and the second figure -10%.

Similar to the brightness gradients but the following saturation gradients show a change of the RYB color 219, 133, 143 by changing the saturation by 10% instead.

 219, 133, 143

255, 255, 255

 255, 187, 197

 255, 215, 225

 255, 244, 253

 219, 133, 143

 190, 107, 117

 162, 82, 93

 134, 57, 69

 107, 32, 47

 80, 4, 27

 55, 0, 0

 24, 0, 1

 0, 0, 0

 219, 133, 143

 219, 133, 143

■ 219, 111, 124

■ 219, 155, 162

■ 219, 89, 104

■ 219, 177, 182

■ 219, 67, 85

■ 219, 199, 201

■ 219, 45, 66

■ 219, 220, 221

■ 219, 24, 46

■ 219, 232, 243

■ 219, 2, 27

■ 219, 237, 255

■ 219, 0, 25

Harmonies

Analogous

The Analogous color harmony consists of three colors that are next to each other on the color wheel.



208, 135, 175



219, 133, 143



213, 147, 114

Triad

The Triadic color harmony groups three colors that are evenly spaced from another and form a triangle on the color wheel.



219, 133, 143



111, 168, 151



83, 134, 217

Complementary

The Complementary color scheme is a pair of colors which are on the opposite of each other on the color wheel.



219, 133, 143



133, 179, 219

Split Complementary

Split-complementary colors differ from the complementary color scheme. The scheme consists of three colors, the original color and two neighbors of the complement color.



29, 107, 200



219, 133, 143



88, 141, 173

Square

The Square scheme is like the rectangle color scheme, but the four colors are evenly spaced on the color wheel.



219, 133, 143



98, 163, 95



43, 109, 174



137, 152, 218

Rectangle

The Rectangle color scheme consists of four colors that form a rectangle on the color wheel.



219, 133, 143



200, 184, 101



43, 109, 174



64, 125, 213

Sweetspot

The Sweet Spot groups the original color and five complimentary colors.



219, 133, 143



255, 224, 228



209, 133, 219



128, 110, 112



0, 0, 0



128, 128, 128

Same Dimension

The Same Dimension uses a secret algorithm to generate beautiful new colors.



219, 133, 143



255, 135, 149



219, 187, 133



110, 99, 100



173, 0, 20



46, 0, 5

Inverse Universe

The Inverse Universe completely reimagines the original color for something new.



219, 133, 143



255, 135, 149



133, 166, 219



110, 99, 100



173, 0, 20



46, 0, 5

Previews

White Background



This preview shows how the RYB color 219, 133, 143 looks on a white background.

Color Contrast Check

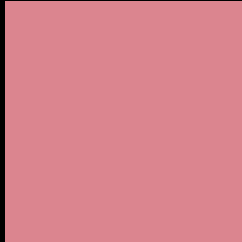
Large Text (above 18pt) WCAG AA × Fail

Any Text WCAG AA × Fail

Large Text (above 18pt) WCAG AAA × Fail

Any Text WCAG AAA × Fail

Black Background



This preview shows how the RYB color 219, 133, 143 looks on a black background.

Color Contrast Check

Large Text (above 18pt) WCAG AA ✓ Pass

Any Text WCAG AA ✓ Pass

Large Text (above 18pt) WCAG AAA ✓ Pass

Any Text WCAG AAA ✓ Pass

If you want to check with other color combinations, try the [Color Contrast Checker](#).

RYB 219, 133, 143 Background



This preview shows how black text looks on a background with the RYB color 219, 133, 143.



This preview shows how white text looks on a background with the RYB color 219, 133, 143.

Color Blindness Simulation

Color vision deficiency is a very complex topic, and I could not describe the different causes any better than Wikipedia does, so if you want to learn more, you should check out their [article about color blindness](#).

Dichromacy



Original Color
219, 133, 143

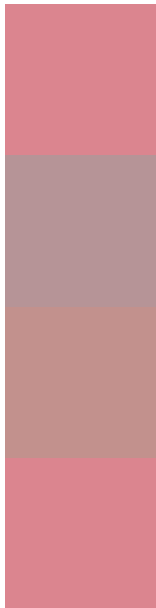
Protanopia
161, 157, 156

Deuteranopia
179, 157, 140



Tritanopia
219, 133, 143

Trichromacy



Original Color
219, 133, 143

Protanomaly
182, 148, 151

Deuteranomaly
194, 145, 141

Tritanomaly
219, 133, 143

Monochromacy



Original Color
219, 133, 143

Achromatopsia
160, 160, 160

Achromatomaly
181, 150, 154

CSS Examples

Text

The CSS property to change the color of the text to RYB 219, 133, 143 is called "color". The color property can be set on classes, ids or directly on the HTML element.

This example shows how text in the color rgb(219, 133, 143) looks like.

```
.text, #text, p{  
    color:rgb(219, 133, 143)  
}
```

If you want to add a text shadow in that color use the text-shadow property, you can generate a text shadow directly with our [CSS Text Shadow Generator](#).

Here you see how black text with a 4 pixel rgb(219, 133, 143) colored shadow looks like.

```
.shadow{ text-shadow: 4px 4px 2px rgb(219, 133, 143) }
```

Border

The CSS property to change the border of an element to RYB 219, 133, 143 is called "border". The border property can be set on classes, ids or directly on the HTML element.

This example shows the color as border, it can be applied via the CSS property "border" or "border-color".

```
.border, #border, table{ border:4px solid rgb(219, 133, 143) }
```

If only the border color should be changed use the property `border-color`.

```
.border{ border-color:rgb(219, 133, 143) }
```

If you want to add a box shadow in that color use:

Here you see how a box with a 4 pixel `rgb(219, 133, 143)` colored shadow looks like.

```
.boxshadow{ -moz-box-shadow:4px 4px 4px  
4px rgb(219, 133, 143); -webkit-box-  
shadow:4px 4px 4px 4px rgb(219, 133, 143);  
box-shadow:4px 4px 4px 4px rgb(219, 133,  
143) }
```

Background

The CSS property to change the background color of an element to RGB 219, 133, 143 is called "background". The background property can be set on classes, ids or directly on the HTML element.

```
.background, #background, body{  
background: rgb(219, 133, 143) }
```

If only the background color should be changed can be used:

```
.background{ background-color: rgb(219,  
133, 143) }
```

This example shows the color as background, it is applied via the CSS property "background".

To optimize and compress your CSS code, you can use our [online CSS compressor and optimizer](#) based on csstidy. If you want to create a linear or radial gradient as background or border, check our [CSS Gradient Generator](#).

Hey! You found this booklet interesting? Support Converting Colors with the new Membership Option!

The pro membership hides all ads, plus gives you double the colors in the color bucket, and more awesome pro features!

[Learn more, Memberships starting at \\$2.50/m!](#)

**Follow me
on Twitter!**

@ConvertingColor