

Converting Colors

`RYB(219, 72, 114)`

Have a look what the booklet for
RYB(219, 72, 114) contains.

RYB(219, 72, 114)	3
<i>Conversions</i>	4
<i>Details</i>	6
<i>Harmonies</i>	11
<i>Previews</i>	23
<i>Color Blindness Simulation</i>	26
<i>CSS Examples</i>	29

Color

`RYB(219, 72, 114)`

Conversions

Conversions Part 1

Format	Color
Hex	DB4872
RGB	219, 72, 114
RGB Percent	86%, 28%, 45%
CMY	0.1412, 0.7176, 0.5529
CMYK	0.00, 0.67, 0.48, 0.14
HSL	343°, 67%, 57%
HSV	343°, 67%, 86%
XYZ	34.5680, 20.9097, 18.1336
YIQ	120.7410, 74.1300, 44.2260

Conversions

Conversions Part 2

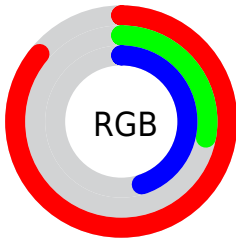
Format	Color
R_{YB}	219, 72, 114
Decimal	14370930
CIE _{Lab}	52.85, 60.13, 8.67
CIE _{LCh}	53, 60.754, 8.205
Yxy	20.9097, 0.4696, 0.2841
Android (android.graphics.Color)	4292561010 (0xFFDB4872)
YUV	120.7410, -3.3233, 86.1731
Hunter-Lab	45.7271, 54.9170, 8.4968

Details

The RYB color **219, 72, 114** is a dark color, and the websafe version is hex **CC3366**. The color can be described as middle muted rose. A complement of this color would be **72, 158, 219**, and the grayscale version is **121, 121, 121**.

A 20% lighter version of the original color is **255, 129, 166**, and **159, 0, 66** is the 20% darker color. If you saturate the color by 10%, you get **219, 50, 98**, and if you desaturate by 10%, it is **219, 94, 130**.

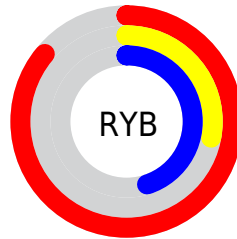
Distribution



Red (86%)

Green (28%)

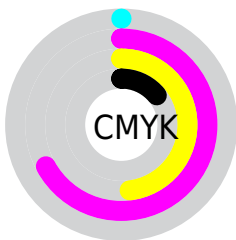
Blue (45%)



Red (86%)

Yellow (28%)

Blue (45%)

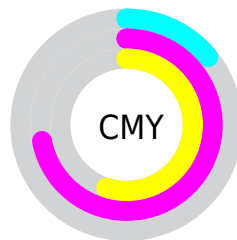


Cyan (0%)

Magenta (67%)

Yellow (48%)

Black (14%)



Cyan (14%)

Magenta (72%)

Yellow (55%)

Brightness & Saturation Gradients

These gradients show how the RYB color 219, 72, 114 changes by changing the brightness by 10 percent. The first figure shows a shift by +10% for each color and the second figure -10%.

Similar to the brightness gradients but the following saturation gradients show a change of the RYB color 219, 72, 114 by changing the saturation by 10% instead.



219, 72, 114



219, 72, 114

255, 255, 255



189, 41, 90



255, 129, 166



159, 0, 66



255, 157, 193



129, 0, 45



255, 186, 221



100, 0, 25



255, 215, 249



72, 0, 2



255, 244, 255



42, 0, 1



0, 0, 0



219, 72, 114



219, 72, 114



219, 50, 98



219, 94, 130

■ 219, 28, 83

■ 219, 116, 145

■ 219, 6, 67

■ 219, 138, 161

■ 219, 0, 63

■ 219, 160, 177

■ 219, 181, 192

■ 219, 203, 208

■ 219, 222, 225

■ 219, 235, 247

■ 219, 237, 255

Harmonies

Analogous

The Analogous color harmony consists of three colors that are next to each other on the color wheel.



199, 82, 166



219, 72, 114



211, 90, 64

Triad

The Triadic color harmony groups three colors that are evenly spaced from another and form a triangle on the color wheel.



219, 72, 114



34, 141, 93



0, 87, 223

Complementary

The Complementary color scheme is a pair of colors which are on the opposite of each other on the color wheel.



219, 72, 114



72, 158, 219

Split Complementary

Split-complementary colors differ from the complementary color scheme. The scheme consists of three colors, the original color and two neighbors of the complement color.



0, 84, 190



219, 72, 114



0, 94, 148

Square

The Square scheme is like the rectangle color scheme, but the four colors are evenly spaced on the color wheel.



219, 72, 114



11, 138, 0



0, 78, 150



0, 82, 230

Rectangle

The Rectangle color scheme consists of four colors that form a rectangle on the color wheel.



219, 72, 114



193, 153, 34



0, 78, 150



0, 87, 215

Sweetspot

The Sweet Spot groups the original color and five complimentary colors.



219, 72, 114



255, 204, 219



175, 72, 219



128, 97, 106



0, 0, 0



128, 128, 128

Same Dimension

The Same Dimension uses a secret algorithm to generate beautiful new colors.



219, 72, 114



255, 48, 107



219, 108, 72



110, 99, 102



173, 0, 50



46, 0, 13

Inverse Universe

The Inverse Universe completely reimagines the original color for something new.



219, 72, 114



255, 48, 107



72, 137, 219



110, 99, 102



173, 0, 50



46, 0, 13

Previews

White Background



This preview shows how the RYB color 219, 72, 114 looks on a white background.

Color Contrast Check

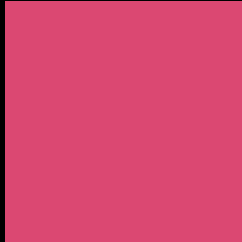
Large Text (above 18pt) WCAG AA ✓ Pass

Any Text WCAG AA ✗ Fail

Large Text (above 18pt) WCAG AAA ✗ Fail

Any Text WCAG AAA ✗ Fail

Black Background



This preview shows how the RYB color 219, 72, 114 looks on a black background.

Color Contrast Check

Large Text (above 18pt) WCAG AA ✓ Pass

Any Text WCAG AA ✓ Pass

Large Text (above 18pt) WCAG AAA ✓ Pass

Any Text WCAG AAA × Fail

If you want to check with other color combinations, try the [Color Contrast Checker](#).

RYB 219, 72, 114 Background



This preview shows how black text looks on a background with the RYB color 219, 72, 114.



This preview shows how white text looks on a background with the RYB color 219, 72, 114.

Color Blindness Simulation

Color vision deficiency is a very complex topic, and I could not describe the different causes any better than Wikipedia does, so if you want to learn more, you should check out their [article about color blindness](#).

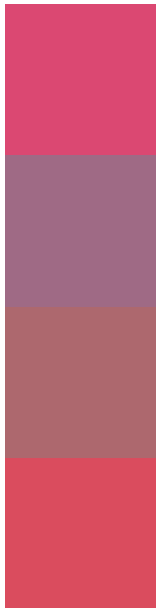
Dichromacy





Tritanopia
217, 78, 83

Trichromacy



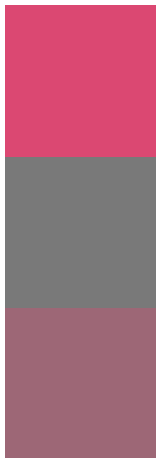
Original Color
219, 72, 114

Protanomaly
159, 106, 133

Deuteranomaly
173, 104, 110

Tritanomaly
218, 76, 94

Monochromacy



Original Color
219, 72, 114

Achromatopsia
121, 121, 121

Achromatomaly
157, 103, 118

CSS Examples

Text

The CSS property to change the color of the text to RYB 219, 72, 114 is called "color". The color property can be set on classes, ids or directly on the HTML element.

This example shows how text in the color `rgb(219, 72, 114)` looks like.

```
.text, #text, p{  
    color:rgb(219, 72, 114)  
}
```

If you want to add a text shadow in that color use the text-shadow property, you can generate a text shadow directly with our [CSS Text Shadow Generator](#).

Here you see how black text with a 4 pixel rgb(219, 72, 114) colored shadow looks like.

```
.shadow{ text-shadow: 4px 4px 2px rgb(219, 72, 114) }
```

Border

The CSS property to change the border of an element to RYB 219, 72, 114 is called "border". The border property can be set on classes, ids or directly on the HTML element.

This example shows the color as border, it can be applied via the CSS property "border" or "border-color".

```
.border, #border, table{ border:4px solid rgb(219, 72, 114) }
```

If only the border color should be changed use the property `border-color`.

```
.border{ border-color:rgb(219, 72, 114) }
```

If you want to add a box shadow in that color use:

Here you see how a box with a 4 pixel `rgb(219, 72, 114)` colored shadow looks like.

```
.boxshadow{ -moz-box-shadow:4px 4px 4px  
4px rgb(219, 72, 114); -webkit-box-  
shadow:4px 4px 4px 4px rgb(219, 72, 114);  
box-shadow:4px 4px 4px 4px rgb(219, 72,  
114) }
```

Background

The CSS property to change the background color of an element to RGB 219, 72, 114 is called "background".

The background property can be set on classes, ids or directly on the HTML element.

```
.background, #background, body{  
background: rgb(219, 72, 114) }
```

If only the background color should be changed can be used:

```
.background{ background-color: rgb(219, 72,  
114) }
```

This example shows the color as background, it is applied via the CSS property "background".

To optimize and compress your CSS code, you can use our [online CSS compressor and optimizer](#) based on csstidy. If you want to create a linear or radial gradient as background or border, check our [CSS Gradient Generator](#).

Hey! You found this booklet interesting? Support Converting Colors with the new Membership Option!

The pro membership hides all ads, plus gives you double the colors in the color bucket, and more awesome pro features!

[Learn more, Memberships starting at \\$2.50/m!](#)

**Follow me
on Twitter!**

@ConvertingColor