

Converting Colors

`RYB(220, 199, 196)`

Have a look what the booklet for
RYB(220, 199, 196) contains.

RYB(220, 199, 196)	3
<i>Conversions</i>	4
<i>Details</i>	6
<i>Harmonies</i>	11
<i>Previews</i>	23
<i>Color Blindness Simulation</i>	26
<i>CSS Examples</i>	29

Color

R_YB(220, 199, 196)

Conversions

Conversions Part 1

Format	Color
Hex	DCC7C4
RGB	220, 199, 196
RGB Percent	86%, 78%, 77%
CMY	0.1373, 0.2209, 0.2314
CMYK	0.00, 0.10, 0.11, 0.14
HSL	7°, 26%, 82%
HSV	7°, 11%, 86%
XYZ	59.8258, 59.8948, 60.6322
YIQ	204.9370, 13.4790, 3.5190

Conversions

Conversions Part 2

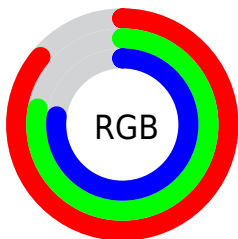
Format	Color
R _Y B	220, 199, 196
Decimal	14469060
CIE Lab	81.78, 7.03, 4.05
CIE LCh	82, 8.113, 29.909
Yxy	59.8948, 0.3317, 0.3321
Android (android.graphics.Color)	4292659140 (0xFFDCC7C4)
YUV	204.9370, -4.4059, 13.2103
Hunter-Lab	77.3917, 2.5496, 7.7237

Details

The RYB color **220, 199, 196** is a light color, and the websafe version is hex **CCCCCC**. A complement of this color would be **196, 207, 220**, and the grayscale version is **205, 205, 205**.

A 20% lighter version of the original color is **253, 255, 253**, and **165, 145, 142** is the 20% darker color. If you saturate the color by 10%, you get **220, 180, 174**, and if you desaturate by 10%, it is **220, 218, 218**.

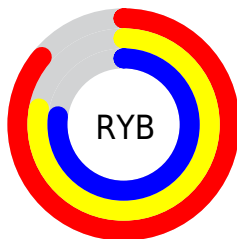
Distribution



Red (86%)

Green (78%)

Blue (77%)



Red (86%)

Yellow (78%)

Blue (77%)

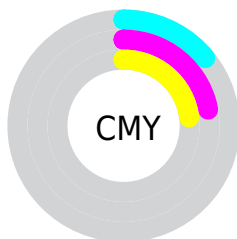


Cyan (0%)

Magenta (10%)

Yellow (11%)

Black (14%)



Cyan (14%)

Magenta (22%)

Yellow (23%)

Brightness & Saturation Gradients

These gradients show how the RYB color 220, 199, 196 changes by changing the brightness by 10 percent. The first figure shows a shift by +10% for each color and the second figure -10%.

Similar to the brightness gradients but the following saturation gradients show a change of the RYB color 220, 199, 196 by changing the saturation by 10% instead.

 220, 199, 196

255, 255, 255

253, 255, 253

 220, 199, 196

 192, 171, 169

 165, 145, 142

 138, 119, 117

 113, 94, 92

 88, 71, 69

 65, 48, 46


 42, 27, 26

 23, 1, 0


 0, 0, 0

 220, 199, 196


 220, 199, 196

 220, 180, 174


 220, 218, 218


 220, 161, 152

 220, 229, 240

 220, 141, 130


 220, 238, 255

 220, 121, 108

 220, 103, 86

 220, 83, 64

 220, 65, 42

 220, 45, 20

 220, 27, 0

Harmonies

Analogous

The Analogous color harmony consists of three colors that are next to each other on the color wheel.



219, 198, 204



220, 199, 196



217, 206, 190

Triad

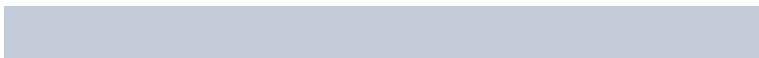
The Triadic color harmony groups three colors that are evenly spaced from another and form a triangle on the color wheel.



220, 199, 196



193, 205, 207



196, 202, 218

Complementary

The Complementary color scheme is a pair of colors which are on the opposite of each other on the color wheel.



220, 199, 196



196, 207, 220

Split Complementary

Split-complementary colors differ from the complementary color scheme. The scheme consists of three colors, the original color and two neighbors of the complement color.



188, 199, 216



220, 199, 196



187, 199, 208

Square

The Square scheme is like the rectangle color scheme, but the four colors are evenly spaced on the color wheel.



220, 199, 196



190, 205, 194



185, 197, 211



205, 201, 216

Rectangle

The Rectangle color scheme consists of four colors that form a rectangle on the color wheel.



220, 199, 196



205, 212, 188



185, 197, 211



193, 201, 218

Sweetspot

The Sweet Spot groups the original color and five complimentary colors.



220, 199, 196



255, 248, 247



220, 196, 218



128, 123, 122



0, 0, 0



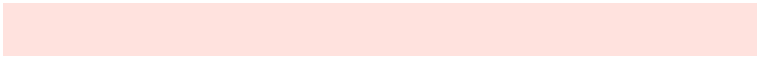
128, 128, 128

Same Dimension

The Same Dimension uses a secret algorithm to generate beautiful new colors.



220, 199, 196



255, 227, 222



213, 220, 196



110, 100, 99



173, 21, 0



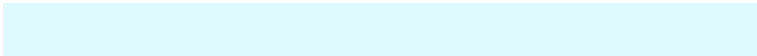
46, 6, 0

Inverse Universe

The Inverse Universe completely reimagines the original color for something new.



196, 207, 220



222, 237, 255



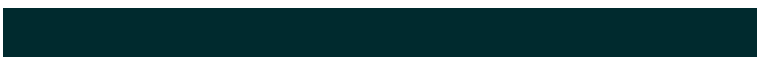
196, 203, 220



99, 104, 110



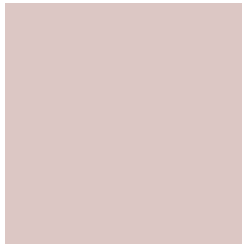
0, 81, 173



0, 22, 46

Previews

White Background



This preview shows how the RYB color 220, 199, 196 looks on a white background.

Color Contrast Check

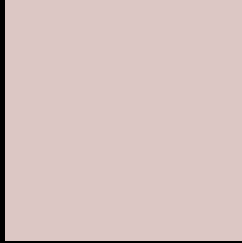
Large Text (above 18pt) WCAG AA × Fail

Any Text WCAG AA × Fail

Large Text (above 18pt) WCAG AAA × Fail

Any Text WCAG AAA × Fail

Black Background



This preview shows how the RYB color 220, 199, 196 looks on a black background.

Color Contrast Check

Large Text (above 18pt) WCAG AA ✓ Pass

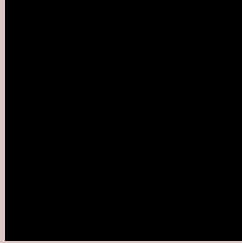
Any Text WCAG AA ✓ Pass

Large Text (above 18pt) WCAG AAA ✓ Pass

Any Text WCAG AAA ✓ Pass

If you want to check with other color combinations, try the [Color Contrast Checker](#).

RYB 220, 199, 196 Background



This preview shows how black text looks on a background with the RYB color 220, 199, 196.



This preview shows how white text looks on a background with the RYB color 220, 199, 196.

Color Blindness Simulation

Color vision deficiency is a very complex topic, and I could not describe the different causes any better than Wikipedia does, so if you want to learn more, you should check out their [article about color blindness](#).


Dichromacy



Original Color
220, 199, 196

Protanopia
208, 205, 198

Deuteranopia
226, 197, 196



Tritanopia
222, 196, 212

Trichromacy



Original Color

220, 199, 196

Protanomaly

212, 202, 197

Deuteranomaly

224, 198, 196

Tritanomaly

221, 197, 206

Monochromacy



Original Color

220, 199, 196

Achromatopsia

205, 205, 205

Achromatomaly

210, 203, 202

CSS Examples

Text

The CSS property to change the color of the text to RYB 220, 199, 196 is called "color". The color property can be set on classes, ids or directly on the HTML element.

This example shows how text in the color rgb(220, 199, 196) looks like.

```
.text, #text, p{  
    color:rgb(220, 199, 196)  
}
```

If you want to add a text shadow in that color use the text-shadow property, you can generate a text shadow directly with our [CSS Text Shadow Generator](#).

Here you see how black text with a 4 pixel rgb(220, 199, 196) colored shadow looks like.

```
.shadow{ text-shadow: 4px 4px 2px rgb(220, 199, 196) }
```

Border

The CSS property to change the border of an element to RYB 220, 199, 196 is called "border". The border property can be set on classes, ids or directly on the HTML element.

This example shows the color as border, it can be applied via the CSS property "border" or "border-color".

```
.border, #border, table{ border:4px solid rgb(220, 199, 196) }
```

If only the border color should be changed use the property `border-color`.

```
.border{ border-color:rgb(220, 199, 196) }
```

If you want to add a box shadow in that color use:

Here you see how a box with a 4 pixel `rgb(220, 199, 196)` colored shadow looks like.

```
.boxshadow{ -moz-box-shadow:4px 4px 4px 4px rgb(220, 199, 196); -webkit-box-shadow:4px 4px 4px 4px rgb(220, 199, 196); box-shadow:4px 4px 4px 4px rgb(220, 199, 196) }
```

Background

The CSS property to change the background color of an element to RYB 220, 199, 196 is called "background". The background property can be set on classes, ids or directly on the HTML element.

```
.background, #background, body{  
background: rgb(220, 199, 196) }
```

If only the background color should be changed can be used:

```
.background{ background-color: rgb(220,  
199, 196) }
```

This example shows the color as background, it is applied via the CSS property "background".

To optimize and compress your CSS code, you can use our [online CSS compressor and optimizer](#) based on csstidy. If you want to create a linear or radial gradient as background or border, check our [CSS Gradient Generator](#).

Hey! You found this booklet interesting? Support Converting Colors with the new Membership Option!

The pro membership hides all ads, plus gives you double the colors in the color bucket, and more awesome pro features!

[Learn more, Memberships starting at \\$2.50/m!](#)

**Follow me
on Twitter!**

@ConvertingColor