

Converting Colors

`RYB(221, 196, 181)`

Have a look what the booklet for
RYB(221, 196, 181) contains.

RYB(221, 196, 181)	3
<i>Conversions</i>	4
<i>Details</i>	6
<i>Harmonies</i>	11
<i>Previews</i>	23
<i>Color Blindness Simulation</i>	26
<i>CSS Examples</i>	29

Color

R_YB(221, 196, 181)

Conversions

Conversions Part 1

Format	Color
Hex	<code>#DDC0B5</code>
RGB	221, 192, 181
RGB Percent	87%, 75%, 71%
CMY	0.1333, 0.2474, 0.2902
CMYK	0.00, 0.13, 0.18, 0.13
HSL	16°, 37%, 79%
HSV	16°, 18%, 87%
XYZ	56.9890, 56.3677, 51.5925
YIQ	199.4170, 20.8150, 2.7270

Conversions

Conversions Part 2

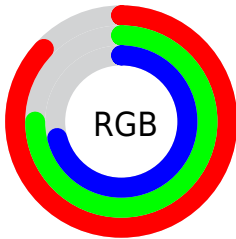
Format	Color
R _Y B	221, 196, 181
Decimal	14532789
CIE Lab	79.82, 8.59, 9.29
CIE LCh	80, 12.654, 47.239
Yxy	56.3677, 0.3455, 0.3417
Android (android.graphics.Color)	4292722869 (0xFFDDC0B5)
YUV	199.4170, -9.0796, 18.9283
Hunter-Lab	75.0784, 4.1048, 11.8119

Details

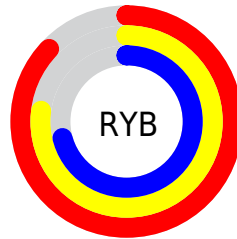
The RYB color **221, 196, 181** is a light color, and the websafe version is hex **FFCCCC**. A complement of this color would be **181, 198, 221**, and the grayscale version is **199, 199, 199**.

A 20% lighter version of the original color is **248, 255, 237**, and **166, 143, 128** is the 20% darker color. If you saturate the color by 10%, you get **221, 182, 159**, and if you desaturate by 10%, it is **221, 210, 203**.

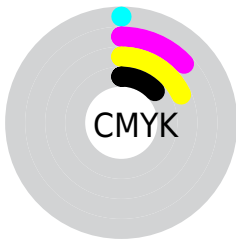
Distribution



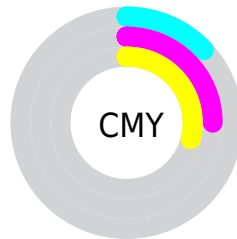
- Red (87%)
- Green (75%)
- Blue (71%)



- Red (87%)
- Yellow (77%)
- Blue (71%)



- Cyan (0%)
- Magenta (13%)
- Yellow (18%)
- Black (13%)




- Cyan (13%)
- Magenta (25%)
- Yellow (29%)

Brightness & Saturation Gradients


These gradients show how the RYB color 221, 196, 181 changes by changing the brightness by 10 percent. The first figure shows a shift by +10% for each color and the second figure -10%.

Similar to the brightness gradients but the following saturation gradients show a change of the RYB color 221, 196, 181 by changing the saturation by 10% instead.

 221, 196, 181

255, 255, 255

 248, 255, 237

 221, 196, 181

 193, 169, 154

 166, 142, 128

 139, 117, 103

 113, 93, 79

 88, 69, 56

 64, 46, 35

 42, 26, 13

 18, 0, 0

 0, 0, 0

■ 221, 196, 181

■ 221, 196, 181

■ 221, 182, 159

■ 221, 210, 203

■ 221, 169, 137

■ 221, 223, 225

■ 221, 155, 115

■ 221, 232, 247

■ 221, 141, 93

■ 221, 238, 255

■ 221, 127, 71

■ 221, 113, 48

■ 221, 99, 26

■ 221, 85, 4

■ 221, 82, 0

Harmonies

Analogous

The Analogous color harmony consists of three colors that are next to each other on the color wheel.



223, 190, 191



221, 196, 181



209, 213, 175

Triad

The Triadic color harmony groups three colors that are evenly spaced from another and form a triangle on the color wheel.



221, 196, 181



175, 194, 205



194, 197, 220

Complementary

The Complementary color scheme is a pair of colors which are on the opposite of each other on the color wheel.



221, 196, 181



181, 198, 221

Split Complementary

Split-complementary colors differ from the complementary color scheme. The scheme consists of three colors, the original color and two neighbors of the complement color.



180, 193, 221



221, 196, 181



169, 187, 205

Square

The Square scheme is like the rectangle color scheme, but the four colors are evenly spaced on the color wheel.



221, 196, 181



182, 203, 198



170, 189, 215



208, 193, 214

Rectangle

The Rectangle color scheme consists of four colors that form a rectangle on the color wheel.



221, 196, 181



184, 205, 175



170, 189, 215



189, 196, 221

Sweetspot

The Sweet Spot groups the original color and five complimentary colors.



221, 196, 181



255, 248, 242



221, 181, 210



128, 123, 120



0, 0, 0



128, 128, 128

Same Dimension

The Same Dimension uses a secret algorithm to generate beautiful new colors.



221, 196, 181



255, 219, 199



193, 221, 181



110, 103, 99



173, 65, 0



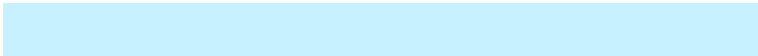
46, 18, 0

Inverse Universe

The Inverse Universe completely reimagines the original color for something new.



181, 198, 221



199, 223, 255



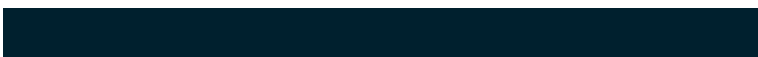
181, 188, 221



99, 104, 110



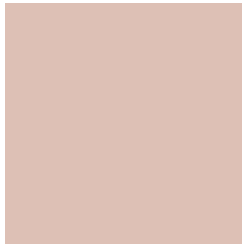
0, 73, 173



0, 19, 46

Previews

White Background



This preview shows how the RYB color 221, 196, 181 looks on a white background.

Color Contrast Check

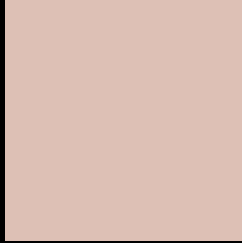
Large Text (above 18pt) WCAG AA × Fail

Any Text WCAG AA × Fail

Large Text (above 18pt) WCAG AAA × Fail

Any Text WCAG AAA × Fail

Black Background



This preview shows how the RYB color 221, 196, 181 looks on a black background.

Color Contrast Check

Large Text (above 18pt) WCAG AA ✓ Pass

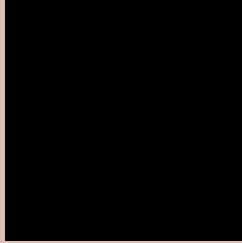
Any Text WCAG AA ✓ Pass

Large Text (above 18pt) WCAG AAA ✓ Pass

Any Text WCAG AAA ✓ Pass

If you want to check with other color combinations, try the [Color Contrast Checker](#).

RYB 221, 196, 181 Background



This preview shows how black text looks on a background with the RYB color 221, 196, 181.





This preview shows how white text looks on a background with the RYB color 221, 196, 181.

Color Blindness Simulation

Color vision deficiency is a very complex topic, and I could not describe the different causes any better than Wikipedia does, so if you want to learn more, you should check out their [article about color blindness](#).

Dichromacy

	Original Color 221, 196, 181
	Protanopia 197, 205, 184
	Deuteranopia 223, 194, 181



Tritanopia
224, 189, 203

Trichromacy



Original Color

221, 196, 181

Protanomaly

211, 204, 183

Deuteranomaly

222, 194, 181

Tritanomaly

223, 190, 195

Monochromacy



Original Color

221, 196, 181

Achromatopsia

199, 199, 199

Achromatomaly

207, 197, 192

CSS Examples

Text

The CSS property to change the color of the text to RYB 221, 196, 181 is called "color". The color property can be set on classes, ids or directly on the HTML element.

This example shows how text in the color `rgb(221, 192, 181)` looks like.

```
.text, #text, p{  
    color:rgb(221, 192, 181)  
}
```

If you want to add a text shadow in that color use the text-shadow property, you can generate a text shadow directly with our [CSS Text Shadow Generator](#).

Here you see how black text with a 4 pixel rgb(221, 192, 181) colored shadow looks like.

```
.shadow{ text-shadow: 4px 4px 2px rgb(221, 192, 181) }
```

Border

The CSS property to change the border of an element to RYB 221, 196, 181 is called "border". The border property can be set on classes, ids or directly on the HTML element.

This example shows the color as border, it can be applied via the CSS property "border" or "border-color".

```
.border, #border, table{ border:4px solid rgb(221, 192, 181) }
```

If only the border color should be changed use the property `border-color`.

```
.border{ border-color:rgb(221, 192, 181) }
```

If you want to add a box shadow in that color use:

Here you see how a box with a 4 pixel `rgb(221, 192, 181)` colored shadow looks like.

```
.boxshadow{ -moz-box-shadow:4px 4px 4px  
4px rgb(221, 192, 181); -webkit-box-  
shadow:4px 4px 4px 4px rgb(221, 192, 181);  
box-shadow:4px 4px 4px 4px rgb(221, 192,  
181) }
```

Background

The CSS property to change the background color of an element to RYB 221, 196, 181 is called "background". The background property can be set on classes, ids or directly on the HTML element.

```
.background, #background, body{  
background: rgb(221, 192, 181) }
```

If only the background color should be changed can be used:

```
.background{ background-color: rgb(221,  
192, 181) }
```

This example shows the color as background, it is applied via the CSS property "background".

To optimize and compress your CSS code, you can use our [online CSS compressor and optimizer](#) based on csstidy. If you want to create a linear or radial gradient as background or border, check our [CSS Gradient Generator](#).

Hey! You found this booklet interesting? Support Converting Colors with the new Membership Option!

The pro membership hides all ads, plus gives you double the colors in the color bucket, and more awesome pro features!

[Learn more, Memberships starting at \\$2.50/m!](#)

**Follow me
on Twitter!**

@ConvertingColor