

Converting Colors

`RYB(221, 97, 122)`

Have a look what the booklet for
RYB(221, 97, 122) contains.

RYB(221, 97, 122)	3
<i>Conversions</i>	4
<i>Details</i>	6
<i>Harmonies</i>	11
<i>Previews</i>	23
<i>Color Blindness Simulation</i>	26
<i>CSS Examples</i>	29

Color

`RYB(221, 97, 122)`

Conversions

Conversions Part 1

Format	Color
Hex	DD617A
RGB	221, 97, 122
RGB Percent	87%, 38%, 48%
CMY	0.1333, 0.6196, 0.5216
CMYK	0.00, 0.56, 0.45, 0.13
HSL	348°, 65%, 62%
HSV	348°, 56%, 87%
XYZ	37.6063, 25.3267, 21.3188
YIQ	136.9260, 65.8790, 34.0630

Conversions

Conversions Part 2

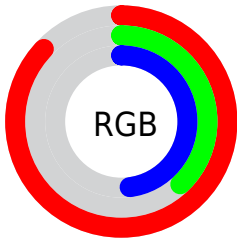
Format	Color
R_{YB}	221, 97, 122
Decimal	14508410
CIE _{Lab}	57.39, 50.72, 10.40
CIE _{LCh}	57, 51.776, 11.591
Yxy	25.3267, 0.4464, 0.3006
Android (android.graphics.Color)	4292698490 (0xFFDD617A)
YUV	136.9260, -7.3585, 73.7329
Hunter-Lab	50.3256, 45.3161, 10.1116

Details

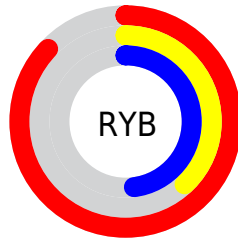
The RYB color **221, 97, 122** is a dark color, and the websafe version is hex **CC6666**. A complement of this color would be **97, 166, 221**, and the grayscale version is **137, 137, 137**.

A 20% lighter version of the original color is **255, 152, 174**, and **162, 42, 74** is the 20% darker color. If you saturate the color by 10%, you get **221, 75, 104**, and if you desaturate by 10%, it is **221, 119, 140**.

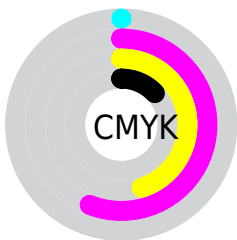
Distribution



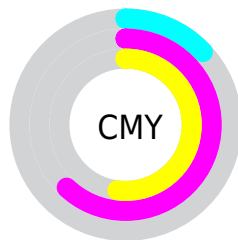
- Red (87%)
- Green (38%)
- Blue (48%)



- Red (87%)
- Yellow (38%)
- Blue (48%)



- Cyan (0%)
- Magenta (56%)
- Yellow (45%)
- Black (13%)



- Cyan (13%)
- Magenta (62%)
- Yellow (52%)

Brightness & Saturation Gradients

These gradients show how the RYB color 221, 97, 122 changes by changing the brightness by 10 percent. The first figure shows a shift by +10% for each color and the second figure -10%.

Similar to the brightness gradients but the following saturation gradients show a change of the RYB color 221, 97, 122 by changing the saturation by 10% instead.



221, 97, 122



221, 97, 122

255, 255, 255



191, 70, 97



255, 152, 174



162, 42, 74



255, 180, 202



132, 2, 51



255, 208, 230



104, 0, 31



255, 237, 255



76, 0, 5



50, 0, 2



0, 0, 0



221, 97, 122



221, 97, 122



221, 75, 104



221, 119, 140

■ 221, 53, 87

■ 221, 141, 157

■ 221, 31, 69

■ 221, 163, 175

■ 221, 9, 51

■ 221, 185, 193

■ 221, 0, 45

■ 221, 208, 210

■ 221, 226, 230

■ 221, 238, 252

■ 221, 238, 255

Harmonies

Analogous

The Analogous color harmony consists of three colors that are next to each other on the color wheel.



206, 102, 167



221, 97, 122



212, 116, 80

Triad

The Triadic color harmony groups three colors that are evenly spaced from another and form a triangle on the color wheel.



221, 97, 122



66, 152, 122



0, 90, 223

Complementary

The Complementary color scheme is a pair of colors which are on the opposite of each other on the color wheel.



221, 97, 122



97, 166, 221

Split Complementary

Split-complementary colors differ from the complementary color scheme. The scheme consists of three colors, the original color and two neighbors of the complement color.



0, 88, 197



221, 97, 122



0, 94, 158

Square

The Square scheme is like the rectangle color scheme, but the four colors are evenly spaced on the color wheel.



221, 97, 122



47, 146, 42



0, 81, 160



86, 123, 227

Rectangle

The Rectangle color scheme consists of four colors that form a rectangle on the color wheel.



221, 97, 122



196, 169, 57



0, 81, 160



0, 90, 217

Sweetspot

The Sweet Spot groups the original color and five complimentary colors.



221, 97, 122



255, 212, 220



194, 97, 221



128, 102, 107



0, 0, 0



128, 128, 128

Same Dimension

The Same Dimension uses a secret algorithm to generate beautiful new colors.



221, 97, 122



255, 84, 119



221, 146, 97



110, 99, 101



173, 0, 35



46, 0, 9

Inverse Universe

The Inverse Universe completely reimagines the original color for something new.



221, 97, 122



255, 84, 119



97, 149, 221



110, 99, 101



173, 0, 35



46, 0, 9

Previews

White Background



This preview shows how the RYB color 221, 97, 122 looks on a white background.

Color Contrast Check

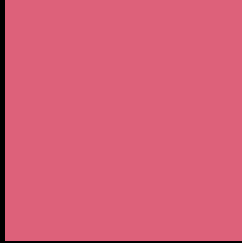
Large Text (above 18pt) WCAG AA ✓ Pass

Any Text WCAG AA ✗ Fail

Large Text (above 18pt) WCAG AAA ✗ Fail

Any Text WCAG AAA ✗ Fail

Black Background



This preview shows how the RYB color 221, 97, 122 looks on a black background.

Color Contrast Check

Large Text (above 18pt) WCAG AA ✓ Pass

Any Text WCAG AA ✓ Pass

Large Text (above 18pt) WCAG AAA ✓ Pass

Any Text WCAG AAA × Fail

If you want to check with other color combinations, try the [Color Contrast Checker](#).

R Y B 221, 97, 122 Background



This preview shows how black text looks on a background with the RYB color 221, 97, 122.

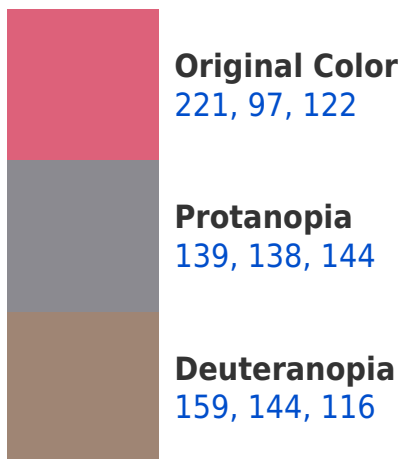



This preview shows how white text looks on a background with the RYB color 221, 97, 122.

Color Blindness Simulation

Color vision deficiency is a very complex topic, and I could not describe the different causes any better than Wikipedia does, so if you want to learn more, you should check out their [article about color blindness](#).

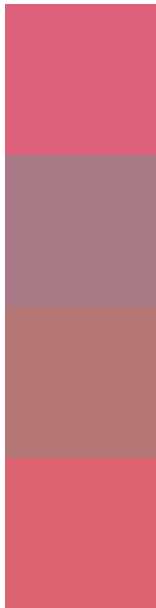
Dichromacy





Tritanopia
220, 100, 107

Trichromacy



Original Color
221, 97, 122

Protanomaly
169, 123, 136

Deuteranomaly
182, 120, 118

Tritanomaly
220, 99, 112

Monochromacy



Original Color
221, 97, 122

Achromatopsia
137, 137, 137

Achromatomaly
168, 122, 132

CSS Examples

Text

The CSS property to change the color of the text to RYB 221, 97, 122 is called "color". The color property can be set on classes, ids or directly on the HTML element.

This example shows how text in the color `rgb(221, 97, 122)` looks like.

```
.text, #text, p{  
    color:rgb(221, 97, 122)  
}
```

If you want to add a text shadow in that color use the text-shadow property, you can generate a text shadow directly with our [CSS Text Shadow Generator](#).

Here you see how black text with a 4 pixel rgb(221, 97, 122) colored shadow looks like.

```
.shadow{ text-shadow: 4px 4px 2px rgb(221, 97, 122) }
```

Border

The CSS property to change the border of an element to RYB 221, 97, 122 is called "border". The border property can be set on classes, ids or directly on the HTML element.

This example shows the color as border, it can be applied via the CSS property "border" or "border-color".

```
.border, #border, table{ border:4px solid rgb(221, 97, 122) }
```

If only the border color should be changed use the property border-color.

```
.border{ border-color:rgb(221, 97, 122) }
```

If you want to add a box shadow in that color use:

Here you see how a box with a 4 pixel rgb(221, 97, 122) colored shadow looks like.

```
.boxshadow{ -moz-box-shadow:4px 4px 4px  
4px rgb(221, 97, 122); -webkit-box-  
shadow:4px 4px 4px 4px rgb(221, 97, 122);  
box-shadow:4px 4px 4px 4px rgb(221, 97,  
122) }
```

Background

The CSS property to change the background color of an element to RGB 221, 97, 122 is called "background".

The background property can be set on classes, ids or directly on the HTML element.

```
.background, #background, body{  
background: rgb(221, 97, 122) }
```

If only the background color should be changed can be used:

```
.background{ background-color: rgb(221, 97,  
122) }
```

This example shows the color as background, it is applied via the CSS property "background".

To optimize and compress your CSS code, you can use our [online CSS compressor and optimizer](#) based on csstidy. If you want to create a linear or radial gradient as background or border, check our [CSS Gradient Generator](#).

Hey! You found this booklet interesting? Support Converting Colors with the new Membership Option!

The pro membership hides all ads, plus gives you double the colors in the color bucket, and more awesome pro features!

[Learn more, Memberships starting at \\$2.50/m!](#)

**Follow me
on Twitter!**

@ConvertingColor