

Converting Colors

`RYB(222, 140, 171)`

Have a look what the booklet for
RYB(222, 140, 171) contains.

RYB(222, 140, 171)	3
<i>Conversions</i>	4
<i>Details</i>	6
<i>Harmonies</i>	11
<i>Previews</i>	23
<i>Color Blindness Simulation</i>	26
<i>CSS Examples</i>	29

Color

R_YB(222, 140, 171)

Conversions

Conversions Part 1

Format	Color
Hex	DE8CAB
RGB	222, 140, 171
RGB Percent	87%, 55%, 67%
CMY	0.1294, 0.4510, 0.3294
CMYK	0.00, 0.37, 0.23, 0.13
HSL	337°, 55%, 71%
HSV	337°, 37%, 87%
XYZ	46.8530, 37.2260, 43.2440
YIQ	168.0520, 38.9210, 27.0250

Conversions

Conversions Part 2

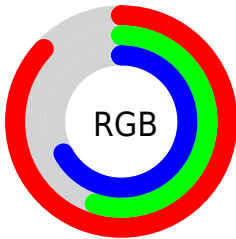
Format	Color
R _Y B	222, 140, 171
Decimal	14585003
CIE Lab	67.45, 35.29, -3.14
CIE LCh	67, 35.432, 354.918
Yxy	37.2260, 0.3680, 0.2924
Android (android.graphics.Color)	4292775083 (0xFFDE8CAB)
YUV	168.0520, 1.4534, 47.3124
Hunter-Lab	61.0131, 30.3000, 0.6865

Details

The RYB color **222, 140, 171** is a light color, and the websafe version is hex **FF99CC**. A complement of this color would be **140, 191, 222**, and the grayscale version is **168, 168, 168**.

A 20% lighter version of the original color is **255, 195, 226**, and **165, 88, 119** is the 20% darker color. If you saturate the color by 10%, you get **222, 118, 157**, and if you desaturate by 10%, it is **222, 162, 185**.

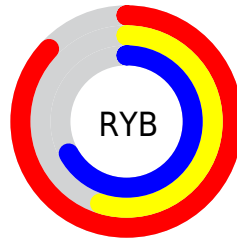
Distribution



Red (87%)

Green (55%)

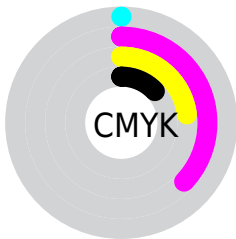
Blue (67%)



Red (87%)

Yellow (55%)

Blue (67%)

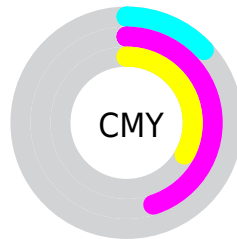


Cyan (0%)

Magenta (37%)

Yellow (23%)

Black (13%)



Cyan (13%)

Magenta (45%)

Yellow (33%)

Brightness & Saturation Gradients

These gradients show how the RYB color 222, 140, 171 changes by changing the brightness by 10 percent. The first figure shows a shift by +10% for each color and the second figure -10%.

Similar to the brightness gradients but the following saturation gradients show a change of the RYB color 222, 140, 171 by changing the saturation by 10% instead.

 222, 140, 171

 222, 140, 171

255, 255, 255

 193, 114, 145

 255, 195, 226

 165, 88, 119

 255, 223, 255

 138, 63, 94

 255, 252, 255

 111, 39, 71


 85, 12, 48

 59, 0, 28

 38, 0, 1

 0, 0, 0

 222, 140, 171

 222, 140, 171

■ 222, 118, 157

■ 222, 162, 185

■ 222, 96, 143

■ 222, 184, 199

■ 222, 73, 130

■ 222, 207, 212

■ 222, 51, 116

■ 222, 226, 229

■ 222, 29, 102

■ 222, 240, 251

■ 222, 7, 88

■ 222, 239, 255

■ 222, 0, 84

■ 222, 239, 255

Harmonies

Analogous

The Analogous color harmony consists of three colors that are next to each other on the color wheel.



199, 147, 201



222, 140, 171



227, 141, 139

Triad

The Triadic color harmony groups three colors that are evenly spaced from another and form a triangle on the color wheel.



222, 140, 171



105, 170, 117



56, 125, 216

Complementary

The Complementary color scheme is a pair of colors which are on the opposite of each other on the color wheel.



222, 140, 171



140, 191, 222

Split Complementary

Split-complementary colors differ from the complementary color scheme. The scheme consists of three colors, the original color and two neighbors of the complement color.



41, 113, 190



222, 140, 171



121, 173, 178

Square

The Square scheme is like the rectangle color scheme, but the four colors are evenly spaced on the color wheel.



222, 140, 171



145, 190, 100



80, 137, 181



109, 149, 227

Rectangle

The Rectangle color scheme consists of four colors that form a rectangle on the color wheel.



222, 140, 171



220, 154, 121



80, 137, 181



43, 118, 208

Sweetspot

The Sweet Spot groups the original color and five complimentary colors.



222, 140, 171



255, 227, 238



191, 140, 222



128, 111, 117



0, 0, 0



128, 128, 128

Same Dimension

The Same Dimension uses a secret algorithm to generate beautiful new colors.



222, 140, 171



255, 143, 185



222, 151, 140



112, 101, 105



176, 0, 67



48, 0, 18

Inverse Universe

The Inverse Universe completely reimagines the original color for something new.



222, 140, 171



255, 143, 185



140, 178, 222



112, 101, 105



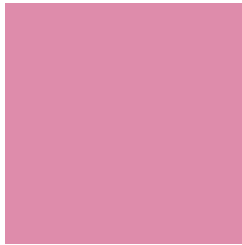
176, 0, 67



48, 0, 18

Previews

White Background



This preview shows how the RYB color 222, 140, 171 looks on a white background.

Color Contrast Check

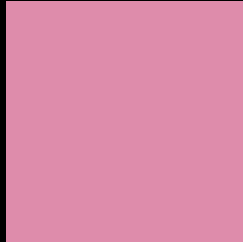
Large Text (above 18pt) WCAG AA × Fail

Any Text WCAG AA × Fail

Large Text (above 18pt) WCAG AAA × Fail

Any Text WCAG AAA × Fail

Black Background



This preview shows how the RYB color 222, 140, 171 looks on a black background.

Color Contrast Check

Large Text (above 18pt) WCAG AA ✓ Pass

Any Text WCAG AA ✓ Pass

Large Text (above 18pt) WCAG AAA ✓ Pass

Any Text WCAG AAA ✓ Pass

If you want to check with other color combinations, try the [Color Contrast Checker](#).

RYB 222, 140, 171 Background



This preview shows how black text looks on a background with the RYB color 222, 140, 171.

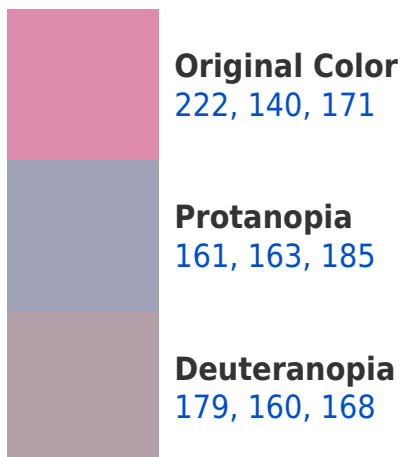



This preview shows how white text looks on a background with the RYB color 222, 140, 171.

Color Blindness Simulation

Color vision deficiency is a very complex topic, and I could not describe the different causes any better than Wikipedia does, so if you want to learn more, you should check out their [article about color blindness](#).

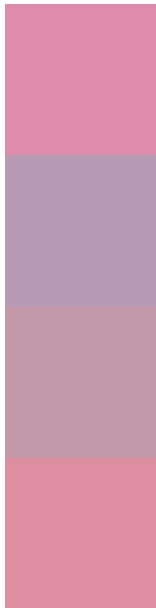
Dichromacy





Tritanopia
220, 143, 154

Trichromacy



Original Color

222, 140, 171

Protanomaly

183, 155, 180

Deuteranomaly

195, 153, 169

Tritanomaly

221, 142, 160

Monochromacy



Original Color

222, 140, 171

Achromatopsia

168, 168, 168

Achromatomaly

188, 158, 169

CSS Examples

Text

The CSS property to change the color of the text to RYB 222, 140, 171 is called "color". The color property can be set on classes, ids or directly on the HTML element.

This example shows how text in the color rgb(222, 140, 171) looks like.

```
.text, #text, p{  
    color:rgb(222, 140, 171)  
}
```

If you want to add a text shadow in that color use the text-shadow property, you can generate a text shadow directly with our [CSS Text Shadow Generator](#).

Here you see how black text with a 4 pixel rgb(222, 140, 171) colored shadow looks like.

```
.shadow{ text-shadow: 4px 4px 2px rgb(222, 140, 171) }
```

Border

The CSS property to change the border of an element to RYB 222, 140, 171 is called "border". The border property can be set on classes, ids or directly on the HTML element.

This example shows the color as border, it can be applied via the CSS property "border" or "border-color".

```
.border, #border, table{ border:4px solid rgb(222, 140, 171) }
```

If only the border color should be changed use the property `border-color`.

```
.border{ border-color:rgb(222, 140, 171) }
```

If you want to add a box shadow in that color use:

Here you see how a box with a 4 pixel `rgb(222, 140, 171)` colored shadow looks like.

```
.boxshadow{ -moz-box-shadow:4px 4px 4px  
4px rgb(222, 140, 171); -webkit-box-  
shadow:4px 4px 4px 4px rgb(222, 140, 171);  
box-shadow:4px 4px 4px 4px rgb(222, 140,  
171) }
```

Background

The CSS property to change the background color of an element to RGB 222, 140, 171 is called "background". The background property can be set on classes, ids or directly on the HTML element.

```
.background, #background, body{  
background: rgb(222, 140, 171) }
```

If only the background color should be changed can be used:

```
.background{ background-color: rgb(222,  
140, 171) }
```

This example shows the color as background, it is applied via the CSS property "background".

To optimize and compress your CSS code, you can use our [online CSS compressor and optimizer](#) based on csstidy. If you want to create a linear or radial gradient as background or border, check our [CSS Gradient Generator](#).

Hey! You found this booklet interesting? Support Converting Colors with the new Membership Option!

The pro membership hides all ads, plus gives you double the colors in the color bucket, and more awesome pro features!

[Learn more, Memberships starting at \\$2.50/m!](#)

**Follow me
on Twitter!**

@ConvertingColor