

Converting Colors

`RYB(222, 179, 184)`

Have a look what the booklet for
RYB(222, 179, 184) contains.

RYB(222, 179, 184)	3
<i>Conversions</i>	4
<i>Details</i>	6
<i>Harmonies</i>	11
<i>Previews</i>	23
<i>Color Blindness Simulation</i>	26
<i>CSS Examples</i>	29

Color

R_YB(222, 179, 184)

Conversions

Conversions Part 1

Format	Color
Hex	DEB3B8
RGB	222, 179, 184
RGB Percent	87%, 70%, 72%
CMY	0.1294, 0.2980, 0.2784
CMYK	0.00, 0.19, 0.17, 0.13
HSL	353°, 39%, 79%
HSV	353°, 19%, 87%
XYZ	54.8960, 51.2305, 52.3425
YIQ	192.4270, 24.0230, 10.6710

Conversions

Conversions Part 2

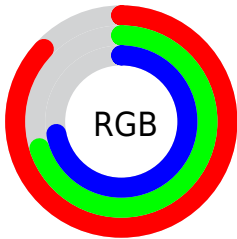
Format	Color
R _Y B	222, 179, 184
Decimal	14595000
CIE Lab	76.82, 16.31, 3.36
CIE LCh	77, 16.656, 11.632
Yxy	51.2305, 0.3464, 0.3233
Android (android.graphics.Color)	4292785080 (0xFFDEB3B8)
YUV	192.4270, -4.1545, 25.9355
Hunter-Lab	71.5755, 11.6465, 6.7446

Details

The RYB color **222, 179, 184** is a light color, and the websafe version is hex **CC9999**. A complement of this color would be **179, 202, 222**, and the grayscale version is **192, 192, 192**.

A 20% lighter version of the original color is **255, 235, 240**, and **166, 126, 131** is the 20% darker color. If you saturate the color by 10%, you get **222, 157, 164**, and if you desaturate by 10%, it is **222, 201, 204**.

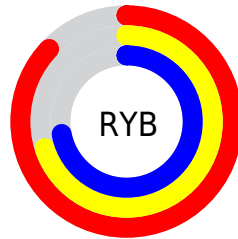
Distribution



Red (87%)

Green (70%)

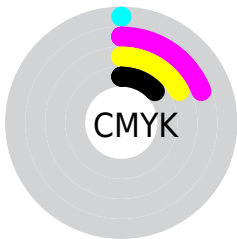
Blue (72%)



Red (87%)

Yellow (70%)

Blue (72%)

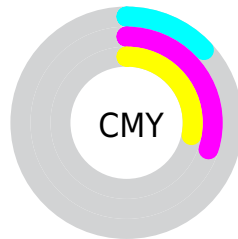


Cyan (0%)

Magenta (19%)

Yellow (17%)

Black (13%)



Cyan (13%)


Magenta (30%)

Yellow (28%)

Brightness & Saturation Gradients


These gradients show how the RYB color 222, 179, 184 changes by changing the brightness by 10 percent. The first figure shows a shift by +10% for each color and the second figure -10%.


Similar to the brightness gradients but the following saturation gradients show a change of the RYB color 222, 179, 184 by changing the saturation by 10% instead.

 222, 179, 184


255, 255, 255


 255, 235, 240

 222, 179, 184

 194, 152, 157


 166, 126, 131

 140, 101, 106

 114, 77, 82

 88, 54, 59


 64, 32, 37


 41, 11, 16

 7, 0, 0


 0, 0, 0

 222, 179, 184


 222, 179, 184

 222, 157, 164

 222, 201, 204

 222, 135, 145

 222, 223, 223

 222, 112, 125

 222, 235, 246

 222, 90, 106

 222, 239, 255

 222, 68, 86

 222, 46, 66

 222, 24, 47

 222, 1, 27

 222, 0, 26

Harmonies

Analogous

The Analogous color harmony consists of three colors that are next to each other on the color wheel.



215, 180, 200



222, 179, 184



220, 184, 170

Triad

The Triadic color harmony groups three colors that are evenly spaced from another and form a triangle on the color wheel.



222, 179, 184



166, 195, 183



162, 182, 218

Complementary

The Complementary color scheme is a pair of colors which are on the opposite of each other on the color wheel.



222, 179, 184



179, 202, 222

Split Complementary

Split-complementary colors differ from the complementary color scheme. The scheme consists of three colors, the original color and two neighbors of the complement color.



151, 177, 209



222, 179, 184



162, 186, 198

Square

The Square scheme is like the rectangle color scheme, but the four colors are evenly spaced on the color wheel.



222, 179, 184



166, 196, 159



151, 176, 199



180, 187, 220

Rectangle

The Rectangle color scheme consists of four colors that form a rectangle on the color wheel.



222, 179, 184



215, 198, 163



151, 176, 199



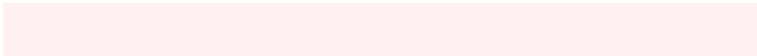
157, 180, 216

Sweetspot

The Sweet Spot groups the original color and five complimentary colors.



222, 179, 184



255, 240, 241



217, 179, 222



128, 119, 120



0, 0, 0



128, 128, 128

Same Dimension

The Same Dimension uses a secret algorithm to generate beautiful new colors.



222, 179, 184



255, 196, 203



222, 204, 179



112, 101, 102



176, 0, 20



48, 0, 6

Inverse Universe

The Inverse Universe completely reimagines the original color for something new.



222, 179, 184



255, 196, 203



179, 196, 222



112, 101, 102



176, 0, 20



48, 0, 6

Previews

White Background



This preview shows how the RYB color 222, 179, 184 looks on a white background.

Color Contrast Check

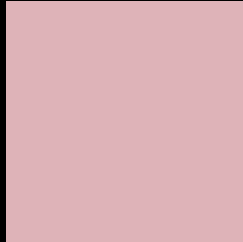
Large Text (above 18pt) WCAG AA × Fail

Any Text WCAG AA × Fail

Large Text (above 18pt) WCAG AAA × Fail

Any Text WCAG AAA × Fail

Black Background



This preview shows how the RYB color 222, 179, 184 looks on a black background.

Color Contrast Check

Large Text (above 18pt) WCAG AA ✓ Pass

Any Text WCAG AA ✓ Pass

Large Text (above 18pt) WCAG AAA ✓ Pass

Any Text WCAG AAA ✓ Pass

If you want to check with other color combinations, try the [Color Contrast Checker](#).

RYB 222, 179, 184 Background



This preview shows how black text looks on a background with the RYB color 222, 179, 184.



This preview shows how white text looks on a background with the RYB color 222, 179, 184.

Color Blindness Simulation

Color vision deficiency is a very complex topic, and I could not describe the different causes any better than Wikipedia does, so if you want to learn more, you should check out their [article about color blindness](#).


Dichromacy



Original Color
222, 179, 184

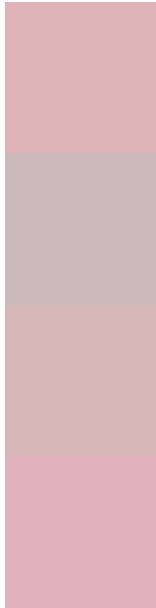
Protanopia
193, 189, 190

Deuteranopia
211, 184, 183



Tritanopia
223, 178, 192

Trichromacy



Original Color

222, 179, 184

Protanomaly

204, 185, 188

Deuteranomaly

215, 182, 183

Tritanomaly

223, 178, 189

Monochromacy



Original Color

222, 179, 184

Achromatopsia

192, 192, 192

Achromatomaly

203, 187, 189

CSS Examples

Text

The CSS property to change the color of the text to RYB 222, 179, 184 is called "color". The color property can be set on classes, ids or directly on the HTML element.

This example shows how text in the color rgb(222, 179, 184) looks like.

```
.text, #text, p{  
    color:rgb(222, 179, 184)  
}
```

If you want to add a text shadow in that color use the text-shadow property, you can generate a text shadow directly with our [CSS Text Shadow Generator](#).

Here you see how black text with a 4 pixel rgb(222, 179, 184) colored shadow looks like.

```
.shadow{ text-shadow: 4px 4px 2px rgb(222, 179, 184) }
```

Border

The CSS property to change the border of an element to RYB 222, 179, 184 is called "border". The border property can be set on classes, ids or directly on the HTML element.

This example shows the color as border, it can be applied via the CSS property "border" or "border-color".

```
.border, #border, table{ border:4px solid rgb(222, 179, 184) }
```

If only the border color should be changed use the property `border-color`.

```
.border{ border-color:rgb(222, 179, 184) }
```

If you want to add a box shadow in that color use:

Here you see how a box with a 4 pixel `rgb(222, 179, 184)` colored shadow looks like.

```
.boxshadow{ -moz-box-shadow:4px 4px 4px  
4px rgb(222, 179, 184); -webkit-box-  
shadow:4px 4px 4px 4px rgb(222, 179, 184);  
box-shadow:4px 4px 4px 4px rgb(222, 179,  
184) }
```

Background

The CSS property to change the background color of an element to RGB 222, 179, 184 is called "background". The background property can be set on classes, ids or directly on the HTML element.

```
.background, #background, body{  
background: rgb(222, 179, 184) }
```

If only the background color should be changed can be used:

```
.background{ background-color: rgb(222,  
179, 184) }
```

This example shows the color as background, it is applied via the CSS property "background".

To optimize and compress your CSS code, you can use our [online CSS compressor and optimizer](#) based on csstidy. If you want to create a linear or radial gradient as background or border, check our [CSS Gradient Generator](#).

Hey! You found this booklet interesting? Support Converting Colors with the new Membership Option!

The pro membership hides all ads, plus gives you double the colors in the color bucket, and more awesome pro features!

[Learn more, Memberships starting at \\$2.50/m!](#)

**Follow me
on Twitter!**

@ConvertingColor