

Converting Colors

`RYB(222, 190, 197)`

Have a look what the booklet for
RYB(222, 190, 197) contains.

RYB(222, 190, 197)	3
<i>Conversions</i>	4
<i>Details</i>	6
<i>Harmonies</i>	11
<i>Previews</i>	23
<i>Color Blindness Simulation</i>	26
<i>CSS Examples</i>	29

Color

$\text{RYB}(222, 190, 197)$

Conversions

Conversions Part 1

Format	Color
Hex	DEBEC5
RGB	222, 190, 197
RGB Percent	87%, 75%, 77%
CMY	0.1294, 0.2549, 0.2275
CMYK	0.00, 0.14, 0.11, 0.13
HSL	347°, 33%, 81%
HSV	347°, 14%, 87%
XYZ	58.6157, 56.3877, 60.6179
YIQ	200.3660, 16.8250, 8.9610

Conversions

Conversions Part 2

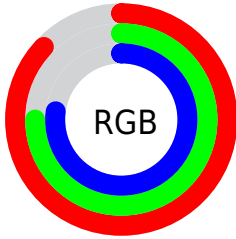
Format	Color
R _Y B	222, 190, 197
Decimal	14597829
CIE Lab	79.83, 12.52, 0.70
CIE LCh	80, 12.536, 3.208
Yxy	56.3877, 0.3338, 0.3211
Android (android.graphics.Color)	4292787909 (0xFFDEBEC5)
YUV	200.3660, -1.6594, 18.9730
Hunter-Lab	75.0918, 7.9243, 4.7023

Details

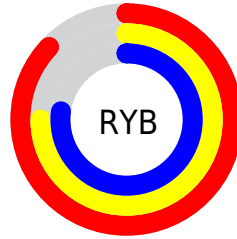
The RYB color **222, 190, 197** is a light color, and the websafe version is hex **FFCCCC**. A complement of this color would be **190, 208, 222**, and the grayscale version is **200, 200, 200**.

A 20% lighter version of the original color is **255, 246, 254**, and **167, 137, 143** is the 20% darker color. If you saturate the color by 10%, you get **222, 168, 180**, and if you desaturate by 10%, it is **222, 212, 214**.

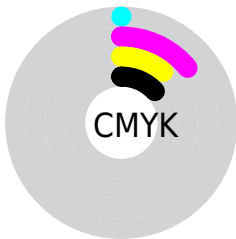
Distribution



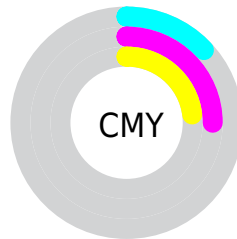
- Red (87%)
- Green (75%)
- Blue (77%)



- Red (87%)
- Yellow (75%)
- Blue (77%)



- Cyan (0%)
- Magenta (14%)
- Yellow (11%)
- Black (13%)



- Cyan (13%)
- Magenta (25%)
- Yellow (23%)

Brightness & Saturation Gradients

These gradients show how the RYB color 222, 190, 197 changes by changing the brightness by 10 percent. The first figure shows a shift by +10% for each color and the second figure -10%.


Similar to the brightness gradients but the following saturation gradients show a change of the RYB color 222, 190, 197 by changing the saturation by 10% instead.


 222, 190, 197

255, 255, 255

 255, 246, 254

 222, 190, 197

 194, 163, 170

 167, 137, 143

 140, 111, 118

 114, 87, 93


 89, 63, 70

 66, 41, 47


 43, 20, 27

 24, 0, 1


 0, 0, 0

 222, 190, 197


 222, 190, 197

 222, 168, 180


 222, 212, 214

 222, 146, 162

 222, 229, 234

 222, 123, 145

 222, 240, 255

 222, 101, 128

 222, 239, 255

 222, 79, 110

 222, 57, 93

 222, 35, 76

 222, 12, 58

 222, 0, 49

Harmonies

Analogous

The Analogous color harmony consists of three colors that are next to each other on the color wheel.



215, 191, 209



222, 190, 197



223, 192, 186

Triad

The Triadic color harmony groups three colors that are evenly spaced from another and form a triangle on the color wheel.



222, 190, 197



178, 201, 186



175, 192, 218

Complementary

The Complementary color scheme is a pair of colors which are on the opposite of each other on the color wheel.



222, 190, 197



190, 208, 222

Split Complementary

Split-complementary colors differ from the complementary color scheme. The scheme consists of three colors, the original color and two neighbors of the complement color.



169, 188, 210



222, 190, 197



180, 199, 204

Square

The Square scheme is like the rectangle color scheme, but the four colors are evenly spaced on the color wheel.



222, 190, 197



188, 206, 175



171, 190, 205



187, 195, 221

Rectangle

The Rectangle color scheme consists of four colors that form a rectangle on the color wheel.



222, 190, 197



220, 199, 180



171, 190, 205



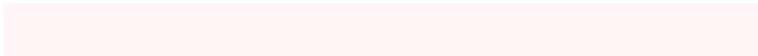
172, 190, 216

Sweetspot

The Sweet Spot groups the original color and five complimentary colors.



222, 190, 197



255, 245, 247



215, 190, 222



128, 121, 123



0, 0, 0



128, 128, 128

Same Dimension

The Same Dimension uses a secret algorithm to generate beautiful new colors.



222, 190, 197



255, 212, 221



222, 203, 190



112, 101, 103



176, 0, 38



48, 0, 11

Inverse Universe

The Inverse Universe completely reimagines the original color for something new.



222, 190, 197



255, 212, 221



190, 203, 222



112, 101, 103



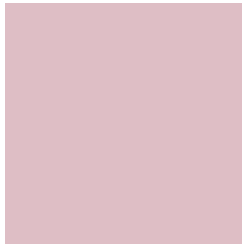
176, 0, 38



48, 0, 11

Previews

White Background



This preview shows how the RYB color 222, 190, 197 looks on a white background.

Color Contrast Check

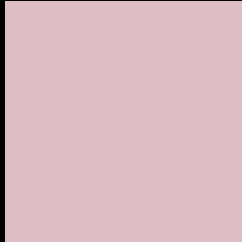
Large Text (above 18pt) WCAG AA × Fail

Any Text WCAG AA × Fail

Large Text (above 18pt) WCAG AAA × Fail

Any Text WCAG AAA × Fail

Black Background



This preview shows how the RYB color 222, 190, 197 looks on a black background.

Color Contrast Check

Large Text (above 18pt) WCAG AA ✓ Pass

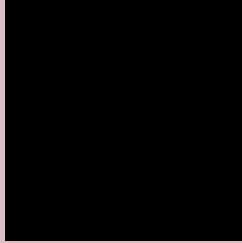
Any Text WCAG AA ✓ Pass

Large Text (above 18pt) WCAG AAA ✓ Pass

Any Text WCAG AAA ✓ Pass

If you want to check with other color combinations, try the [Color Contrast Checker](#).

R Y B 222, 190, 197 Background



This preview shows how black text looks on a background with the RYB color 222, 190, 197.





This preview shows how white text looks on a background with the RYB color 222, 190, 197.

Color Blindness Simulation

Color vision deficiency is a very complex topic, and I could not describe the different causes any better than Wikipedia does, so if you want to learn more, you should check out their [article about color blindness](#).

Dichromacy

	Original Color 222, 190, 197
	Protanopia 201, 197, 201
	Deuteranopia 218, 192, 197



Tritanopia
223, 189, 204

Trichromacy



Original Color

222, 190, 197

Protanomaly

209, 194, 200

Deuteranomaly

219, 191, 197

Tritanomaly

223, 189, 201

Monochromacy



Original Color

222, 190, 197

Achromatopsia

200, 200, 200

Achromatomaly

208, 196, 199

CSS Examples

Text

The CSS property to change the color of the text to RYB 222, 190, 197 is called "color". The color property can be set on classes, ids or directly on the HTML element.

This example shows how text in the color `rgb(222, 190, 197)` looks like.

```
.text, #text, p{  
    color:rgb(222, 190, 197)  
}
```

If you want to add a text shadow in that color use the text-shadow property, you can generate a text shadow directly with our [CSS Text Shadow Generator](#).

Here you see how black text with a 4 pixel rgb(222, 190, 197) colored shadow looks like.

```
.shadow{ text-shadow: 4px 4px 2px rgb(222, 190, 197) }
```

Border

The CSS property to change the border of an element to RYB 222, 190, 197 is called "border". The border property can be set on classes, ids or directly on the HTML element.

This example shows the color as border, it can be applied via the CSS property "border" or "border-color".

```
.border, #border, table{ border:4px solid rgb(222, 190, 197) }
```

If only the border color should be changed use the property border-color.

```
.border{ border-color:rgb(222, 190, 197) }
```

If you want to add a box shadow in that color use:

Here you see how a box with a 4 pixel rgb(222, 190, 197) colored shadow looks like.

```
.boxshadow{ -moz-box-shadow:4px 4px 4px  
4px rgb(222, 190, 197); -webkit-box-  
shadow:4px 4px 4px 4px rgb(222, 190, 197);  
box-shadow:4px 4px 4px 4px rgb(222, 190,  
197) }
```

Background

The CSS property to change the background color of an element to RGB 222, 190, 197 is called "background". The background property can be set on classes, ids or directly on the HTML element.

```
.background, #background, body{  
background: rgb(222, 190, 197) }
```

If only the background color should be changed can be used:

```
.background{ background-color: rgb(222,  
190, 197) }
```

This example shows the color as background, it is applied via the CSS property "background".

To optimize and compress your CSS code, you can use our [online CSS compressor and optimizer](#) based on csstidy. If you want to create a linear or radial gradient as background or border, check our [CSS Gradient Generator](#).

Hey! You found this booklet interesting? Support Converting Colors with the new Membership Option!

The pro membership hides all ads, plus gives you double the colors in the color bucket, and more awesome pro features!

[Learn more, Memberships starting at \\$2.50/m!](#)

**Follow me
on Twitter!**

@ConvertingColor