

Converting Colors

`RYB(222, 198, 197)`

Have a look what the booklet for
RYB(222, 198, 197) contains.

RYB(222, 198, 197)	3
<i>Conversions</i>	4
<i>Details</i>	6
<i>Harmonies</i>	11
<i>Previews</i>	23
<i>Color Blindness Simulation</i>	26
<i>CSS Examples</i>	29

Color

R_YB(222, 198, 197)

Conversions

Conversions Part 1

Format	Color
Hex	DEC6C5
RGB	222, 198, 197
RGB Percent	87%, 78%, 77%
CMY	0.1294, 0.2237, 0.2275
CMYK	0.00, 0.11, 0.11, 0.13
HSL	2°, 27%, 82%
HSV	2°, 11%, 87%
XYZ	60.3875, 59.9314, 61.2085
YIQ	205.0620, 14.6250, 4.7770

Conversions

Conversions Part 2

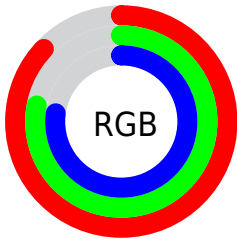
Format	Color
R _Y B	222, 198, 197
Decimal	14599877
CIE Lab	81.80, 8.28, 3.56
CIE LCh	82, 9.017, 23.257
Yxy	59.9314, 0.3327, 0.3302
Android (android.graphics.Color)	4292789957 (0xFFDEC6C5)
YUV	205.0620, -3.9746, 14.8546
Hunter-Lab	77.4154, 3.7613, 7.3131

Details

The RYB color **222, 198, 197** is a light color, and the websafe version is hex **CCCCCC**. A complement of this color would be **197, 209, 222**, and the grayscale version is **205, 205, 205**.

A 20% lighter version of the original color is 254, 255, 254, and **167, 144, 143** is the 20% darker color. If you saturate the color by 10%, you get **222, 177, 175**, and if you desaturate by 10%, it is **222, 219, 219**.

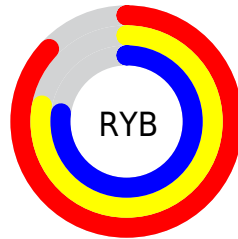
Distribution



Red (87%)

Green (78%)

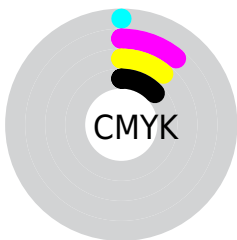
Blue (77%)



Red (87%)

Yellow (78%)

Blue (77%)

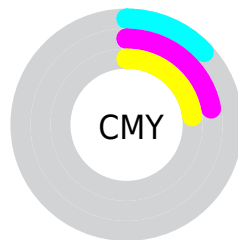


Cyan (0%)

Magenta (11%)

Yellow (11%)

Black (13%)



Cyan (13%)


Magenta (22%)

Yellow (23%)

Brightness & Saturation Gradients


These gradients show how the RYB color 222, 198, 197 changes by changing the brightness by 10 percent. The first figure shows a shift by +10% for each color and the second figure -10%.


Similar to the brightness gradients but the following saturation gradients show a change of the RYB color 222, 198, 197 by changing the saturation by 10% instead.

 222, 198, 197


255, 255, 255


254, 255, 254


 222, 198, 197

 194, 171, 170

 167, 144, 143

 140, 118, 118

 115, 94, 93


 90, 70, 70

 66, 48, 47


 44, 27, 27

 25, 0, 0


 0, 0, 0

 222, 198, 197


 222, 198, 197

 222, 177, 175


 222, 219, 219

 222, 155, 153

 222, 232, 241

 222, 134, 130

 222, 239, 255

 222, 113, 108

 222, 91, 86

 222, 70, 64

 222, 49, 42

 222, 27, 19

 222, 9, 0

Harmonies

Analogous

The Analogous color harmony consists of three colors that are next to each other on the color wheel.



220, 198, 206



222, 198, 197



219, 205, 190

Triad

The Triadic color harmony groups three colors that are evenly spaced from another and form a triangle on the color wheel.



222, 198, 197



193, 207, 207



193, 201, 220

Complementary

The Complementary color scheme is a pair of colors which are on the opposite of each other on the color wheel.



222, 198, 197



197, 209, 222

Split Complementary

Split-complementary colors differ from the complementary color scheme. The scheme consists of three colors, the original color and two neighbors of the complement color.



185, 198, 217



222, 198, 197



186, 199, 208

Square

The Square scheme is like the rectangle color scheme, but the four colors are evenly spaced on the color wheel.



222, 198, 197



188, 205, 190



183, 196, 210



203, 202, 219

Rectangle

The Rectangle color scheme consists of four colors that form a rectangle on the color wheel.



222, 198, 197



215, 215, 187



183, 196, 210



190, 200, 219

Sweetspot

The Sweet Spot groups the original color and five complimentary colors.



222, 198, 197



255, 248, 247



222, 197, 221



128, 123, 122



0, 0, 0



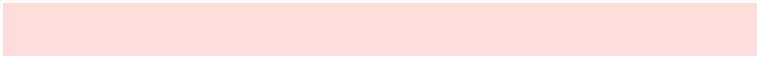
128, 128, 128

Same Dimension

The Same Dimension uses a secret algorithm to generate beautiful new colors.



222, 198, 197



255, 221, 219



220, 222, 197



112, 101, 101



176, 7, 0



48, 2, 0

Inverse Universe

The Inverse Universe completely reimagines the original color for something new.



197, 209, 222



219, 237, 255



197, 205, 222



101, 107, 112



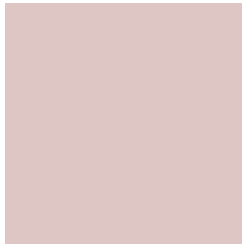
0, 86, 176



0, 24, 48

Previews

White Background



This preview shows how the RYB color 222, 198, 197 looks on a white background.

Color Contrast Check

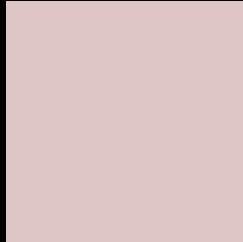
Large Text (above 18pt) WCAG AA × Fail

Any Text WCAG AA × Fail

Large Text (above 18pt) WCAG AAA × Fail

Any Text WCAG AAA × Fail

Black Background



This preview shows how the RYB color 222, 198, 197 looks on a black background.

Color Contrast Check

Large Text (above 18pt) WCAG AA ✓ Pass

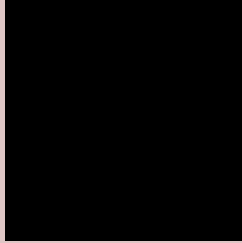
Any Text WCAG AA ✓ Pass

Large Text (above 18pt) WCAG AAA ✓ Pass

Any Text WCAG AAA ✓ Pass

If you want to check with other color combinations, try the [Color Contrast Checker](#).

R Y B 222, 198, 197 Background



This preview shows how black text looks on a background with the RYB color 222, 198, 197.



This preview shows how white text looks on a background with the RYB color 222, 198, 197.

Color Blindness Simulation

Color vision deficiency is a very complex topic, and I could not describe the different causes any better than Wikipedia does, so if you want to learn more, you should check out their [article about color blindness](#).


Dichromacy



Original Color
222, 198, 197

Protanopia
208, 205, 200

Deuteranopia
225, 197, 197



Tritanopia
224, 196, 211

Trichromacy



Original Color

222, 198, 197

Protanomaly

213, 201, 199

Deuteranomaly

224, 197, 197

Tritanomaly

223, 197, 206

Monochromacy



Original Color

222, 198, 197

Achromatopsia

205, 205, 205

Achromatomaly

211, 202, 202

CSS Examples

Text

The CSS property to change the color of the text to RYB 222, 198, 197 is called "color". The color property can be set on classes, ids or directly on the HTML element.

This example shows how text in the color `rgb(222, 198, 197)` looks like.

```
.text, #text, p{  
    color:rgb(222, 198, 197)  
}
```

If you want to add a text shadow in that color use the text-shadow property, you can generate a text shadow directly with our [CSS Text Shadow Generator](#).

Here you see how black text with a 4 pixel rgb(222, 198, 197) colored shadow looks like.

```
.shadow{ text-shadow: 4px 4px 2px rgb(222, 198, 197) }
```

Border

The CSS property to change the border of an element to RYB 222, 198, 197 is called "border". The border property can be set on classes, ids or directly on the HTML element.

This example shows the color as border, it can be applied via the CSS property "border" or "border-color".

```
.border, #border, table{ border:4px solid rgb(222, 198, 197) }
```

If only the border color should be changed use the property `border-color`.

```
.border{ border-color:rgb(222, 198, 197) }
```

If you want to add a box shadow in that color use:

Here you see how a box with a 4 pixel `rgb(222, 198, 197)` colored shadow looks like.

```
.boxshadow{ -moz-box-shadow:4px 4px 4px 4px rgb(222, 198, 197); -webkit-box-shadow:4px 4px 4px 4px rgb(222, 198, 197); box-shadow:4px 4px 4px 4px rgb(222, 198, 197) }
```

Background

The CSS property to change the background color of an element to RYB 222, 198, 197 is called "background". The background property can be set on classes, ids or directly on the HTML element.

```
.background, #background, body{  
background: rgb(222, 198, 197) }
```

If only the background color should be changed can be used:

```
.background{ background-color: rgb(222,  
198, 197) }
```

This example shows the color as background, it is applied via the CSS property "background".

To optimize and compress your CSS code, you can use our [online CSS compressor and optimizer](#) based on csstidy. If you want to create a linear or radial gradient as background or border, check our [CSS Gradient Generator](#).

Hey! You found this booklet interesting? Support Converting Colors with the new Membership Option!

The pro membership hides all ads, plus gives you double the colors in the color bucket, and more awesome pro features!

[Learn more, Memberships starting at \\$2.50/m!](#)

**Follow me
on Twitter!**

@ConvertingColor