

Converting Colors

`RYB(223, 193, 205)`

Have a look what the booklet for
RYB(223, 193, 205) contains.

RYB(223, 193, 205)	3
<i>Conversions</i>	4
<i>Details</i>	6
<i>Harmonies</i>	11
<i>Previews</i>	23
<i>Color Blindness Simulation</i>	26
<i>CSS Examples</i>	29

Color

R_YB(223, 193, 205)

Conversions

Conversions Part 1

Format	Color
Hex	DFC1CD
RGB	223, 193, 205
RGB Percent	87%, 76%, 80%
CMY	0.1255, 0.2431, 0.1961
CMYK	0.00, 0.13, 0.08, 0.13
HSL	336°, 32%, 82%
HSV	336°, 13%, 87%
XYZ	60.5208, 58.2357, 65.8084
YIQ	203.3380, 14.0280, 10.0920

Conversions

Conversions Part 2

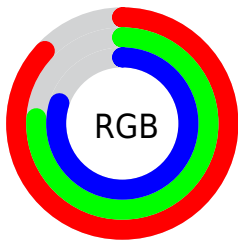
Format	Color
R _Y B	223, 193, 205
Decimal	14664141
CIE Lab	80.87, 12.61, -2.08
CIE LCh	81, 12.784, 350.633
Yxy	58.2357, 0.3279, 0.3155
Android (android.graphics.Color)	4292854221 (0xFFDFC1CD)
YUV	203.3380, 0.8194, 17.2436
Hunter-Lab	76.3123, 8.0161, 2.2895

Details

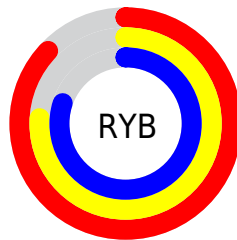
The RYB color **223, 193, 205** is a light color, and the websafe version is hex **FFCCCC**. A complement of this color would be **193, 212, 223**, and the grayscale version is **203, 203, 203**.

A 20% lighter version of the original color is **255, 250, 255**, and **168, 139, 151** is the 20% darker color. If you saturate the color by 10%, you get **223, 171, 192**, and if you desaturate by 10%, it is **223, 215, 218**.

Distribution



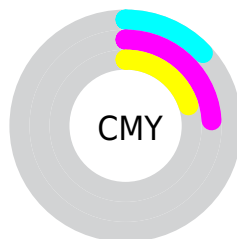
- Red (87%)
- Green (76%)
- Blue (80%)



- Red (87%)
- Yellow (76%)
- Blue (80%)



- Cyan (0%)
- Magenta (13%)
- Yellow (8%)
- Black (13%)



- Cyan (13%)
- Magenta (24%)
- Yellow (20%)

Brightness & Saturation Gradients

These gradients show how the RYB color 223, 193, 205 changes by changing the brightness by 10 percent. The first figure shows a shift by +10% for each color and the second figure -10%.

Similar to the brightness gradients but the following saturation gradients show a change of the RYB color 223, 193, 205 by changing the saturation by 10% instead.

 223, 193, 205


255, 255, 255

 255, 250, 255


 223, 193, 205

 195, 166, 178

 168, 139, 151

 141, 114, 125

 115, 89, 100

 91, 66, 76

 67, 43, 54

 44, 23, 32

 26, 0, 9

 0, 0, 0

■ 223, 193, 205

■ 223, 193, 205

■ 223, 171, 192

■ 223, 215, 218

■ 223, 148, 178

■ 223, 232, 238

■ 223, 126, 165

■ 223, 242, 255

■ 223, 104, 151

■ 223, 239, 255

■ 223, 82, 138

■ 223, 59, 125

■ 223, 37, 111

■ 223, 15, 98

■ 223, 0, 89

Harmonies

Analogous

The Analogous color harmony consists of three colors that are next to each other on the color wheel.



213, 195, 216



223, 193, 205



227, 193, 193

Triad

The Triadic color harmony groups three colors that are evenly spaced from another and form a triangle on the color wheel.



223, 193, 205



178, 203, 179



173, 192, 219

Complementary

The Complementary color scheme is a pair of colors which are on the opposite of each other on the color wheel.



223, 193, 205



193, 212, 223

Split Complementary

Split-complementary colors differ from the complementary color scheme. The scheme consists of three colors, the original color and two neighbors of the complement color.



171, 190, 209



223, 193, 205



185, 206, 203

Square

The Square scheme is like the rectangle color scheme, but the four colors are evenly spaced on the color wheel.



223, 193, 205



202, 214, 177



176, 196, 208



184, 197, 224

Rectangle

The Rectangle color scheme consists of four colors that form a rectangle on the color wheel.



223, 193, 205



225, 196, 186



176, 196, 208



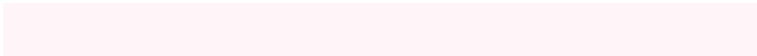
172, 191, 216

Sweetspot

The Sweet Spot groups the original color and five complimentary colors.



223, 193, 205



255, 245, 249



211, 193, 223



128, 121, 124



0, 0, 0



128, 128, 128

Same Dimension

The Same Dimension uses a secret algorithm to generate beautiful new colors.



223, 193, 205



255, 214, 231



223, 196, 193



112, 101, 105



176, 0, 70



48, 0, 19

Inverse Universe

The Inverse Universe completely reimagines the original color for something new.



223, 193, 205



255, 214, 231



193, 207, 223



112, 101, 105



176, 0, 70



48, 0, 19

Previews

White Background



This preview shows how the RYB color 223, 193, 205 looks on a white background.

Color Contrast Check

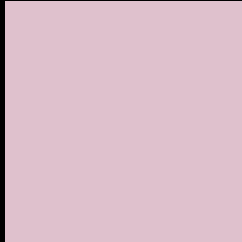
Large Text (above 18pt) WCAG AA × Fail

Any Text WCAG AA × Fail

Large Text (above 18pt) WCAG AAA × Fail

Any Text WCAG AAA × Fail

Black Background



This preview shows how the RYB color 223, 193, 205 looks on a black background.

Color Contrast Check

Large Text (above 18pt) WCAG AA ✓ Pass

Any Text WCAG AA ✓ Pass

Large Text (above 18pt) WCAG AAA ✓ Pass

Any Text WCAG AAA ✓ Pass

If you want to check with other color combinations, try the [Color Contrast Checker](#).

RYP 223, 193, 205 Background



This preview shows how black text looks on a background with the RYB color 223, 193, 205.



This preview shows how white text looks on a background with the RYB color 223, 193, 205.

Color Blindness Simulation

Color vision deficiency is a very complex topic, and I could not describe the different causes any better than Wikipedia does, so if you want to learn more, you should check out their [article about color blindness](#).


Dichromacy



Original Color
223, 193, 205

Protanopia
202, 200, 209

Deuteranopia
219, 195, 205



Tritanopia
223, 193, 208

Trichromacy



Original Color
223, 193, 205

Protanomaly
210, 197, 208

Deuteranomaly
220, 194, 205

Tritanomaly
223, 193, 207

Monochromacy



Original Color
223, 193, 205

Achromatopsia
203, 203, 203

Achromatomaly
210, 199, 204

CSS Examples

Text

The CSS property to change the color of the text to RYB 223, 193, 205 is called "color". The color property can be set on classes, ids or directly on the HTML element.

This example shows how text in the color rgb(223, 193, 205) looks like.

```
.text, #text, p{  
    color:rgb(223, 193, 205)  
}
```

If you want to add a text shadow in that color use the text-shadow property, you can generate a text shadow directly with our [CSS Text Shadow Generator](#).

Here you see how black text with a 4 pixel rgb(223, 193, 205) colored shadow looks like.

```
.shadow{ text-shadow: 4px 4px 2px rgb(223, 193, 205) }
```

Border

The CSS property to change the border of an element to RYB 223, 193, 205 is called "border". The border property can be set on classes, ids or directly on the HTML element.

This example shows the color as border, it can be applied via the CSS property "border" or "border-color".

```
.border, #border, table{ border:4px solid rgb(223, 193, 205) }
```

If only the border color should be changed use the property `border-color`.

```
.border{ border-color:rgb(223, 193, 205) }
```

If you want to add a box shadow in that color use:

Here you see how a box with a 4 pixel `rgb(223, 193, 205)` colored shadow looks like.

```
.boxshadow{ -moz-box-shadow:4px 4px 4px  
4px rgb(223, 193, 205); -webkit-box-  
shadow:4px 4px 4px 4px rgb(223, 193, 205);  
box-shadow:4px 4px 4px 4px rgb(223, 193,  
205) }
```

Background

The CSS property to change the background color of an element to RGB 223, 193, 205 is called "background". The background property can be set on classes, ids or directly on the HTML element.

```
.background, #background, body{  
background: rgb(223, 193, 205) }
```

If only the background color should be changed can be used:

```
.background{ background-color: rgb(223,  
193, 205) }
```

This example shows the color as background, it is applied via the CSS property "background".

To optimize and compress your CSS code, you can use our [online CSS compressor and optimizer](#) based on csstidy. If you want to create a linear or radial gradient as background or border, check our [CSS Gradient Generator](#).

Hey! You found this booklet interesting? Support Converting Colors with the new Membership Option!

The pro membership hides all ads, plus gives you double the colors in the color bucket, and more awesome pro features!

[Learn more, Memberships starting at \\$2.50/m!](#)

**Follow me
on Twitter!**

@ConvertingColor