

Converting Colors

`RYB(223, 198, 205)`

Have a look what the booklet for
RYB(223, 198, 205) contains.

RYB(223, 198, 205)	3
<i>Conversions</i>	4
<i>Details</i>	6
<i>Harmonies</i>	11
<i>Previews</i>	23
<i>Color Blindness Simulation</i>	26
<i>CSS Examples</i>	29

Color

R_YB(223, 198, 205)

Conversions

Conversions Part 1

Format	Color
Hex	DFC6CD
RGB	223, 198, 205
RGB Percent	87%, 78%, 80%
CMY	0.1255, 0.2235, 0.1961
CMYK	0.00, 0.11, 0.08, 0.13
HSL	343°, 28%, 83%
HSV	343°, 11%, 87%
XYZ	61.6450, 60.4839, 66.1831
YIQ	206.2730, 12.6530, 7.4770

Conversions

Conversions Part 2

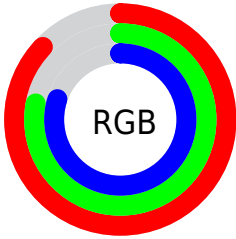
Format	Color
R _Y B	223, 198, 205
Decimal	14665421
CIE Lab	82.10, 9.96, -0.28
CIE LCh	82, 9.959, 358.395
Yxy	60.4839, 0.3274, 0.3212
Android (android.graphics.Color)	4292855501 (0xFFDFC6CD)
YUV	206.2730, -0.6276, 14.6696
Hunter-Lab	77.7714, 5.3868, 3.9845

Details

The RYB color **223, 198, 205** is a light color, and the websafe version is hex **CCCCCC**. A complement of this color would be **198, 213, 223**, and the grayscale version is **206, 206, 206**.

A 20% lighter version of the original color is **255, 255, 255**, and **168, 144, 151** is the 20% darker color. If you saturate the color by 10%, you get **223, 176, 189**, and if you desaturate by 10%, it is **223, 220, 221**.

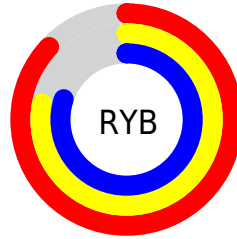
Distribution



Red (87%)

Green (78%)

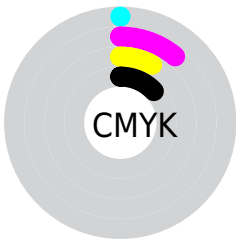
Blue (80%)



Red (87%)

Yellow (78%)

Blue (80%)

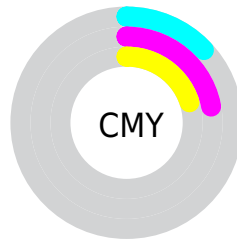


Cyan (0%)

Magenta (11%)

Yellow (8%)

Black (13%)



Cyan (13%)

Magenta (22%)

Yellow (20%)

Brightness & Saturation Gradients

These gradients show how the RYB color 223, 198, 205 changes by changing the brightness by 10 percent. The first figure shows a shift by +10% for each color and the second figure -10%.

Similar to the brightness gradients but the following saturation gradients show a change of the RYB color 223, 198, 205 by changing the saturation by 10% instead.


 223, 198, 205

255, 255, 255


 223, 198, 205

 195, 171, 178

 168, 144, 151

 141, 118, 125

 116, 94, 100

 91, 70, 76

 67, 48, 54


 45, 27, 32

 26, 0, 9

 0, 0, 0

 223, 198, 205

 223, 198, 205

 223, 176, 189


 223, 220, 221

 223, 153, 173

 223, 235, 243


 223, 131, 157

 223, 240, 255

 223, 109, 141

 223, 239, 255

 223, 87, 125

 223, 64, 109

 223, 42, 93

 223, 20, 77

 223, 0, 62

Harmonies

Analogous

The Analogous color harmony consists of three colors that are next to each other on the color wheel.



216, 199, 214



223, 198, 205



225, 198, 196

Triad

The Triadic color harmony groups three colors that are evenly spaced from another and form a triangle on the color wheel.



223, 198, 205



188, 206, 192



185, 199, 220

Complementary

The Complementary color scheme is a pair of colors which are on the opposite of each other on the color wheel.



223, 198, 205



198, 213, 223

Split Complementary

Split-complementary colors differ from the complementary color scheme. The scheme consists of three colors, the original color and two neighbors of the complement color.



181, 196, 213



223, 198, 205



192, 207, 209

Square

The Square scheme is like the rectangle color scheme, but the four colors are evenly spaced on the color wheel.



223, 198, 205



202, 213, 186



184, 199, 210



194, 202, 223

Rectangle

The Rectangle color scheme consists of four colors that form a rectangle on the color wheel.



223, 198, 205



223, 204, 191



184, 199, 210



183, 198, 218

Sweetspot

The Sweet Spot groups the original color and five complimentary colors.



223, 198, 205



255, 247, 249



216, 198, 223



128, 122, 124



0, 0, 0



128, 128, 128

Same Dimension

The Same Dimension uses a secret algorithm to generate beautiful new colors.



223, 198, 205



255, 222, 231



223, 204, 198



112, 101, 104



176, 0, 49



48, 0, 14

Inverse Universe

The Inverse Universe completely reimagines the original color for something new.



223, 198, 205



255, 222, 231



198, 209, 223



112, 101, 104



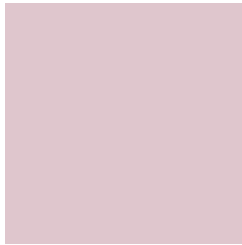
176, 0, 49



48, 0, 14

Previews

White Background



This preview shows how the RYB color 223, 198, 205 looks on a white background.

Color Contrast Check

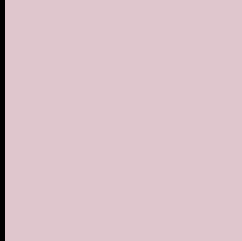
Large Text (above 18pt) WCAG AA × Fail

Any Text WCAG AA × Fail

Large Text (above 18pt) WCAG AAA × Fail

Any Text WCAG AAA × Fail

Black Background



This preview shows how the RYB color 223, 198, 205 looks on a black background.

Color Contrast Check

Large Text (above 18pt) WCAG AA ✓ Pass

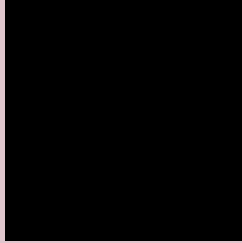
Any Text WCAG AA ✓ Pass

Large Text (above 18pt) WCAG AAA ✓ Pass

Any Text WCAG AAA ✓ Pass

If you want to check with other color combinations, try the [Color Contrast Checker](#).

RYB 223, 198, 205 Background



This preview shows how black text looks on a background with the RYB color 223, 198, 205.



This preview shows how white text looks on a background with the RYB color 223, 198, 205.

Color Blindness Simulation

Color vision deficiency is a very complex topic, and I could not describe the different causes any better than Wikipedia does, so if you want to learn more, you should check out their [article about color blindness](#).


Dichromacy



Original Color
[223, 198, 205](#)

Protanopia
[207, 203, 208](#)

Deuteranopia
[224, 198, 205](#)



Tritanopia
224, 197, 212

Trichromacy



Original Color

223, 198, 205

Protanomaly

213, 201, 207

Deuteranomaly

224, 198, 205

Tritanomaly

224, 197, 209

Monochromacy



Original Color

223, 198, 205

Achromatopsia

206, 206, 206

Achromatomaly

212, 203, 206

CSS Examples

Text

The CSS property to change the color of the text to RYB 223, 198, 205 is called "color". The color property can be set on classes, ids or directly on the HTML element.

This example shows how text in the color `rgb(223, 198, 205)` looks like.

```
.text, #text, p{  
    color:rgb(223, 198, 205)  
}
```

If you want to add a text shadow in that color use the text-shadow property, you can generate a text shadow directly with our [CSS Text Shadow Generator](#).

Here you see how black text with a 4 pixel rgb(223, 198, 205) colored shadow looks like.

```
.shadow{ text-shadow: 4px 4px 2px rgb(223, 198, 205) }
```

Border

The CSS property to change the border of an element to RYB 223, 198, 205 is called "border". The border property can be set on classes, ids or directly on the HTML element.

This example shows the color as border, it can be applied via the CSS property "border" or "border-color".

```
.border, #border, table{ border:4px solid rgb(223, 198, 205) }
```

If only the border color should be changed use the property `border-color`.

```
.border{ border-color:rgb(223, 198, 205) }
```

If you want to add a box shadow in that color use:

Here you see how a box with a 4 pixel `rgb(223, 198, 205)` colored shadow looks like.

```
.boxshadow{ -moz-box-shadow:4px 4px 4px  
4px rgb(223, 198, 205); -webkit-box-  
shadow:4px 4px 4px 4px rgb(223, 198, 205);  
box-shadow:4px 4px 4px 4px rgb(223, 198,  
205) }
```

Background

The CSS property to change the background color of an element to RYB 223, 198, 205 is called "background". The background property can be set on classes, ids or directly on the HTML element.

```
.background, #background, body{  
background: rgb(223, 198, 205) }
```

If only the background color should be changed can be used:

```
.background{ background-color: rgb(223,  
198, 205) }
```

This example shows the color as background, it is applied via the CSS property "background".

To optimize and compress your CSS code, you can use our [online CSS compressor and optimizer](#) based on csstidy. If you want to create a linear or radial gradient as background or border, check our [CSS Gradient Generator](#).

Hey! You found this booklet interesting? Support Converting Colors with the new Membership Option!

The pro membership hides all ads, plus gives you double the colors in the color bucket, and more awesome pro features!

[Learn more, Memberships starting at \\$2.50/m!](#)

**Follow me
on Twitter!**

@ConvertingColor