

Converting Colors

`RYB(223, 199, 199)`

Have a look what the booklet for
RYB(223, 199, 199) contains.

RYB(223, 199, 199)	3
<i>Conversions</i>	4
<i>Details</i>	6
<i>Harmonies</i>	11
<i>Previews</i>	23
<i>Color Blindness Simulation</i>	26
<i>CSS Examples</i>	29

Color

R_YB(223, 199, 199)

Conversions

Conversions Part 1

Format	Color
Hex	DFC7C7
RGB	223, 199, 199
RGB Percent	87%, 78%, 78%
CMY	0.1255, 0.2196, 0.2196
CMYK	0.00, 0.11, 0.11, 0.13
HSL	0°, 27%, 83%
HSV	0°, 11%, 87%
XYZ	61.1637, 60.6583, 62.5174
YIQ	206.1760, 14.3040, 5.0880

Conversions

Conversions Part 2

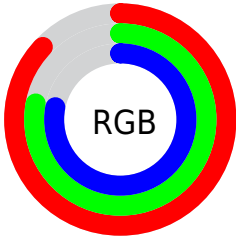
Format	Color
R _Y B	223, 199, 199
Decimal	14665671
CIE Lab	82.19, 8.42, 3.07
CIE LCh	82, 8.963, 20.038
Yxy	60.6583, 0.3318, 0.3291
Android (android.graphics.Color)	4292855751 (0xFFDFC7C7)
YUV	206.1760, -3.5378, 14.7546
Hunter-Lab	77.8835, 3.8840, 6.9261

Details

The RYB color **223, 199, 199** is a light color, and the websafe version is hex **CCCCCC**. A complement of this color would be **199, 211, 223**, and the grayscale version is **206, 206, 206**.

A 20% lighter version of the original color is 255, 255, 255, and **168, 145, 145** is the 20% darker color. If you saturate the color by 10%, you get **223, 177, 177**, and if you desaturate by 10%, it is **223, 221, 221**.

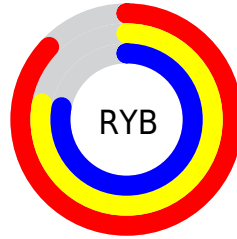
Distribution



Red (87%)

Green (78%)

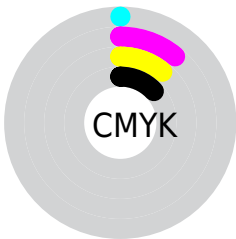
Blue (78%)



Red (87%)

Yellow (78%)

Blue (78%)

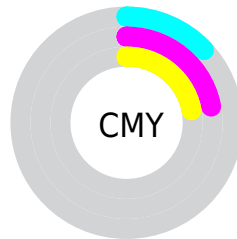


Cyan (0%)

Magenta (11%)

Yellow (11%)

Black (13%)



Cyan (13%)

Magenta (22%)

Yellow (22%)

Brightness & Saturation Gradients

These gradients show how the RYB color 223, 199, 199 changes by changing the brightness by 10 percent. The first figure shows a shift by +10% for each color and the second figure -10%.

Similar to the brightness gradients but the following saturation gradients show a change of the RYB color 223, 199, 199 by changing the saturation by 10% instead.

■ 223, 199, 199

255, 255, 255

■ 223, 199, 199

■ 195, 172, 172

■ 168, 145, 145

■ 141, 119, 120

■ 115, 95, 95

■ 91, 71, 71

■ 67, 49, 49

■ 44, 28, 28

■ 26, 1, 1


■ 0, 0, 0

 223, 199, 199

 223, 199, 199

 223, 177, 177


 223, 221, 221

 223, 154, 154

 223, 234, 244

 223, 132, 132

 223, 239, 255

 223, 110, 110

 223, 88, 88

 223, 65, 65

 223, 43, 43

 223, 21, 21

 223, 0, 0

Harmonies

Analogous

The Analogous color harmony consists of three colors that are next to each other on the color wheel.



220, 199, 208



223, 199, 199



221, 203, 192

Triad

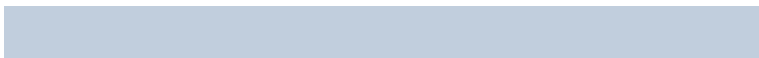
The Triadic color harmony groups three colors that are evenly spaced from another and form a triangle on the color wheel.



223, 199, 199



193, 208, 205



193, 202, 221

Complementary

The Complementary color scheme is a pair of colors which are on the opposite of each other on the color wheel.



223, 199, 199



199, 211, 223

Split Complementary

Split-complementary colors differ from the complementary color scheme. The scheme consists of three colors, the original color and two neighbors of the complement color.



186, 199, 217



223, 199, 199



188, 201, 209

Square

The Square scheme is like the rectangle color scheme, but the four colors are evenly spaced on the color wheel.



223, 199, 199



189, 206, 190



184, 197, 210



203, 203, 220

Rectangle

The Rectangle color scheme consists of four colors that form a rectangle on the color wheel.



223, 199, 199



217, 213, 189



184, 197, 210



190, 201, 220

Sweetspot

The Sweet Spot groups the original color and five complimentary colors.



223, 199, 199



255, 247, 247



223, 199, 223



128, 122, 122



0, 0, 0



128, 128, 128

Same Dimension

The Same Dimension uses a secret algorithm to generate beautiful new colors.



223, 199, 199



255, 222, 222



223, 223, 199



112, 101, 101



176, 0, 0



48, 0, 0

Inverse Universe

The Inverse Universe completely reimagines the original color for something new.



199, 211, 223



222, 239, 255



199, 207, 223



101, 107, 112



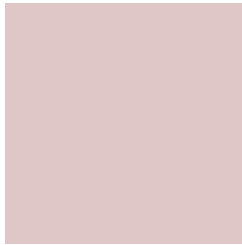
0, 88, 176



0, 24, 48

Previews

White Background



This preview shows how the RYB color 223, 199, 199 looks on a white background.

Color Contrast Check

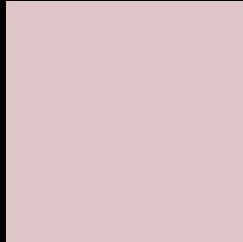
Large Text (above 18pt) WCAG AA × Fail

Any Text WCAG AA × Fail

Large Text (above 18pt) WCAG AAA × Fail

Any Text WCAG AAA × Fail

Black Background



This preview shows how the RYB color 223, 199, 199 looks on a black background.

Color Contrast Check

Large Text (above 18pt) WCAG AA ✓ Pass

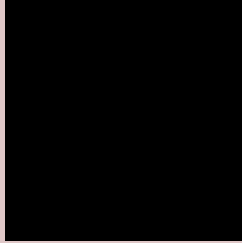
Any Text WCAG AA ✓ Pass

Large Text (above 18pt) WCAG AAA ✓ Pass

Any Text WCAG AAA ✓ Pass

If you want to check with other color combinations, try the [Color Contrast Checker](#).

RGB 223, 199, 199 Background



This preview shows how black text looks on a background with the RGB color 223, 199, 199.



This preview shows how white text looks on a background with the RGB color 223, 199, 199.

Color Blindness Simulation

Color vision deficiency is a very complex topic, and I could not describe the different causes any better than Wikipedia does, so if you want to learn more, you should check out their [article about color blindness](#).


Dichromacy



Original Color
223, 199, 199

Protanopia
209, 205, 202

Deuteranopia
226, 198, 199



Tritanopia
225, 197, 212

Trichromacy



Original Color

223, 199, 199

Protanomaly

214, 202, 201

Deuteranomaly

225, 198, 199

Tritanomaly

224, 198, 207

Monochromacy



Original Color

223, 199, 199

Achromatopsia

206, 206, 206

Achromatomaly

212, 203, 203

CSS Examples

Text

The CSS property to change the color of the text to RYB 223, 199, 199 is called "color". The color property can be set on classes, ids or directly on the HTML element.

This example shows how text in the color `rgb(223, 199, 199)` looks like.

```
.text, #text, p{  
    color:rgb(223, 199, 199)  
}
```

If you want to add a text shadow in that color use the text-shadow property, you can generate a text shadow directly with our [CSS Text Shadow Generator](#).

Here you see how black text with a 4 pixel rgb(223, 199, 199) colored shadow looks like.

```
.shadow{ text-shadow: 4px 4px 2px rgb(223, 199, 199) }
```

Border

The CSS property to change the border of an element to RYB 223, 199, 199 is called "border". The border property can be set on classes, ids or directly on the HTML element.

This example shows the color as border, it can be applied via the CSS property "border" or "border-color".

```
.border, #border, table{ border:4px solid rgb(223, 199, 199) }
```

If only the border color should be changed use the property `border-color`.

```
.border{ border-color:rgb(223, 199, 199) }
```

If you want to add a box shadow in that color use:

Here you see how a box with a 4 pixel `rgb(223, 199, 199)` colored shadow looks like.

```
.boxshadow{ -moz-box-shadow:4px 4px 4px 4px rgb(223, 199, 199); -webkit-box-shadow:4px 4px 4px 4px rgb(223, 199, 199); box-shadow:4px 4px 4px 4px rgb(223, 199, 199) }
```

Background

The CSS property to change the background color of an element to RGB 223, 199, 199 is called "background". The background property can be set on classes, ids or directly on the HTML element.

```
.background, #background, body{  
background: rgb(223, 199, 199) }
```

If only the background color should be changed can be used:

```
.background{ background-color: rgb(223,  
199, 199) }
```

This example shows the color as background, it is applied via the CSS property "background".

To optimize and compress your CSS code, you can use our [online CSS compressor and optimizer](#) based on csstidy. If you want to create a linear or radial gradient as background or border, check our [CSS Gradient Generator](#).

Hey! You found this booklet interesting? Support Converting Colors with the new Membership Option!

The pro membership hides all ads, plus gives you double the colors in the color bucket, and more awesome pro features!

[Learn more, Memberships starting at \\$2.50/m!](#)

**Follow me
on Twitter!**

@ConvertingColor