

Converting Colors

`RYB(224, 200, 200)`

Have a look what the booklet for
RYB(224, 200, 200) contains.

RYB(224, 200, 200)	3
<i>Conversions</i>	4
<i>Details</i>	6
<i>Harmonies</i>	11
<i>Previews</i>	23
<i>Color Blindness Simulation</i>	26
<i>CSS Examples</i>	29

Color

R_YB(224, 200, 200)

Conversions

Conversions Part 1

Format	Color
Hex	E0C8C8
RGB	224, 200, 200
RGB Percent	88%, 78%, 78%
CMY	0.1216, 0.2157, 0.2157
CMYK	0.00, 0.11, 0.11, 0.12
HSL	0°, 28%, 83%
HSV	0°, 11%, 88%
XYZ	61.8201, 61.3260, 63.2224
YIQ	207.1760, 14.3040, 5.0880

Conversions

Conversions Part 2

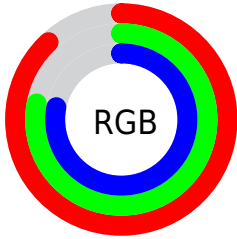
Format	Color
R_{YB}	224, 200, 200
Decimal	14731464
CIE Lab	82.55, 8.41, 3.07
CIE LCh	83, 8.953, 20.034
Yxy	61.3260, 0.3317, 0.3291
Android (android.graphics.Color)	4292921544 (0xFFE0C8C8)
YUV	207.1760, -3.5378, 14.7546
Hunter-Lab	78.3109, 3.8671, 6.9513

Details

The RYB color **224, 200, 200** is a light color, and the websafe version is hex **CCCCCC**. A complement of this color would be **200, 212, 224**, and the grayscale version is **207, 207, 207**.

A 20% lighter version of the original color is 255, 255, 255, and **169, 146, 146** is the 20% darker color. If you saturate the color by 10%, you get **224, 178, 178**, and if you desaturate by 10%, it is **224, 222, 222**.

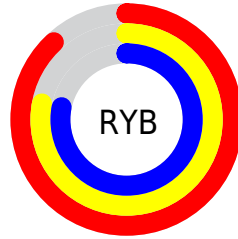
Distribution



Red (88%)

Green (78%)

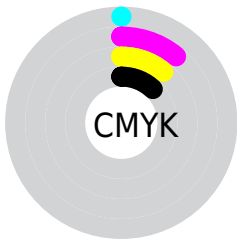
Blue (78%)



Red (88%)

Yellow (78%)

Blue (78%)

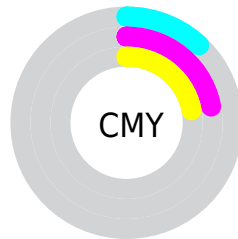


Cyan (0%)

Magenta (11%)

Yellow (11%)

Black (12%)



Cyan (12%)

Magenta (22%)

Yellow (22%)

Brightness & Saturation Gradients


These gradients show how the RYB color 224, 200, 200 changes by changing the brightness by 10 percent. The first figure shows a shift by +10% for each color and the second figure -10%.

Similar to the brightness gradients but the following saturation gradients show a change of the RYB color 224, 200, 200 by changing the saturation by 10% instead.


 224, 200, 200

 224, 200, 200


255, 255, 255


 196, 173, 173

 169, 146, 146

 142, 120, 120

 116, 96, 96

 92, 72, 72

 68, 49, 50

 45, 28, 29

 26, 2, 2


 0, 0, 0

 224, 200, 200

 224, 200, 200

 224, 178, 178

 224, 222, 222

 224, 155, 155


 224, 235, 245

 224, 133, 133

 224, 240, 255

 224, 110, 110

 224, 88, 88

 224, 66, 66

 224, 43, 43

 224, 21, 21

 224, 0, 0

Harmonies

Analogous

The Analogous color harmony consists of three colors that are next to each other on the color wheel.



221, 200, 209



224, 200, 200



222, 204, 193

Triad

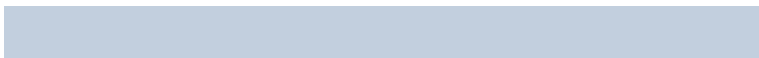
The Triadic color harmony groups three colors that are evenly spaced from another and form a triangle on the color wheel.



224, 200, 200



194, 209, 206



194, 203, 222

Complementary

The Complementary color scheme is a pair of colors which are on the opposite of each other on the color wheel.



224, 200, 200



200, 212, 224

Split Complementary

Split-complementary colors differ from the complementary color scheme. The scheme consists of three colors, the original color and two neighbors of the complement color.



187, 200, 218



224, 200, 200



189, 202, 210

Square

The Square scheme is like the rectangle color scheme, but the four colors are evenly spaced on the color wheel.



224, 200, 200



190, 207, 191



185, 198, 211



204, 204, 221

Rectangle

The Rectangle color scheme consists of four colors that form a rectangle on the color wheel.



224, 200, 200



218, 214, 190



185, 198, 211



191, 202, 221

Sweetspot

The Sweet Spot groups the original color and five complimentary colors.



224, 200, 200



255, 247, 247



224, 200, 224



128, 122, 122



0, 0, 0



128, 128, 128

Same Dimension

The Same Dimension uses a secret algorithm to generate beautiful new colors.



224, 200, 200



255, 222, 222



224, 224, 200



112, 101, 101



176, 0, 0



48, 0, 0

Inverse Universe

The Inverse Universe completely reimagines the original color for something new.



200, 212, 224



222, 239, 255



200, 208, 224



101, 107, 112



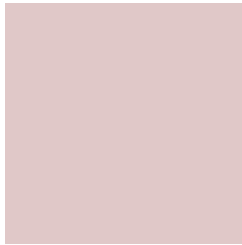
0, 88, 176



0, 24, 48

Previews

White Background



This preview shows how the RYB color 224, 200, 200 looks on a white background.

Color Contrast Check

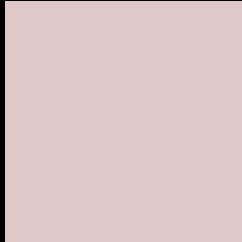
Large Text (above 18pt) WCAG AA × Fail

Any Text WCAG AA × Fail

Large Text (above 18pt) WCAG AAA × Fail

Any Text WCAG AAA × Fail

Black Background



This preview shows how the RYB color 224, 200, 200 looks on a black background.

Color Contrast Check

Large Text (above 18pt) WCAG AA ✓ Pass

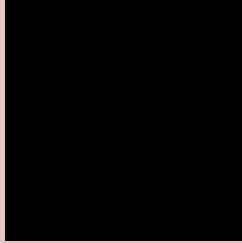
Any Text WCAG AA ✓ Pass

Large Text (above 18pt) WCAG AAA ✓ Pass

Any Text WCAG AAA ✓ Pass

If you want to check with other color combinations, try the [Color Contrast Checker](#).

R Y B 224, 200, 200 Background



This preview shows how black text looks on a background with the RYB color 224, 200, 200.



This preview shows how white text looks on a background with the RYB color 224, 200, 200.

Color Blindness Simulation

Color vision deficiency is a very complex topic, and I could not describe the different causes any better than Wikipedia does, so if you want to learn more, you should check out their [article about color blindness](#).


Dichromacy



Original Color
224, 200, 200

Protanopia
210, 206, 203

Deuteranopia
227, 199, 200



Tritanopia
226, 198, 213

Trichromacy



Original Color

224, 200, 200

Protanomaly

215, 203, 202

Deuteranomaly

226, 199, 200

Tritanomaly

225, 199, 208

Monochromacy



Original Color

224, 200, 200

Achromatopsia

207, 207, 207

Achromatomaly

213, 204, 204

CSS Examples

Text

The CSS property to change the color of the text to RYB 224, 200, 200 is called "color". The color property can be set on classes, ids or directly on the HTML element.

This example shows how text in the color `rgb(224, 200, 200)` looks like.

```
.text, #text, p{  
    color:rgb(224, 200, 200)  
}
```

If you want to add a text shadow in that color use the text-shadow property, you can generate a text shadow directly with our [CSS Text Shadow Generator](#).

Here you see how black text with a 4 pixel rgb(224, 200, 200) colored shadow looks like.

```
.shadow{ text-shadow: 4px 4px 2px rgb(224, 200, 200) }
```

Border

The CSS property to change the border of an element to RYB 224, 200, 200 is called "border". The border property can be set on classes, ids or directly on the HTML element.

This example shows the color as border, it can be applied via the CSS property "border" or "border-color".

```
.border, #border, table{ border:4px solid rgb(224, 200, 200) }
```

If only the border color should be changed use the property `border-color`.

```
.border{ border-color:rgb(224, 200, 200) }
```

If you want to add a box shadow in that color use:

Here you see how a box with a 4 pixel `rgb(224, 200, 200)` colored shadow looks like.

```
.boxshadow{ -moz-box-shadow:4px 4px 4px  
4px rgb(224, 200, 200); -webkit-box-  
shadow:4px 4px 4px 4px rgb(224, 200, 200);  
box-shadow:4px 4px 4px 4px rgb(224, 200,  
200) }
```

Background

The CSS property to change the background color of an element to RYB 224, 200, 200 is called "background". The background property can be set on classes, ids or directly on the HTML element.

```
.background, #background, body{  
background: rgb(224, 200, 200) }
```

If only the background color should be changed can be used:

```
.background{ background-color: rgb(224,  
200, 200) }
```

This example shows the color as background, it is applied via the CSS property "background".

To optimize and compress your CSS code, you can use our [online CSS compressor and optimizer](#) based on csstidy. If you want to create a linear or radial gradient as background or border, check our [CSS Gradient Generator](#).

Hey! You found this booklet interesting? Support Converting Colors with the new Membership Option!

The pro membership hides all ads, plus gives you double the colors in the color bucket, and more awesome pro features!

[Learn more, Memberships starting at \\$2.50/m!](#)

**Follow me
on Twitter!**

@ConvertingColor